

SMEAG

GLOBAL EDUCATION



CAMBRIDGE | IELTS | TOEIC | TOEFL



www.smeag.com

CONTENTS

Contents	P 1 - P 2
Greeting Message	P 3
A Vision for the Future	P 4
History	P 5 - P 6



CEBU

7 Capital Campus
Campus Features

COURSES

- 9** ESL By Cambridge
Courses and Programs
- 11** IELTS
Courses and Programs
- 13** TOEFL
Courses and Programs
- 15** TOEIC
Courses and Programs
- 17** BUSINESS
Courses and Programs
- 19** FAMILY PROGRAM
Courses and Programs



TARLAC

21 Global Campus
Campus Features

COURSES

- 23** Elementary School
Grade 1-6
- 25** Junior High School
Grade 7-10
- 27** Senior High School
Grade 11-12
- 29** ACT (GAC) Program
Courses and Programs
- 31** Global Junior Camp
A weekly schedule



SPECIAL FEATURES

- 35** SMEAG Activities
Philippines
- 37** SMEAG Staff
Academic & Administrative Staff
- 39** SMEAG in Media
Media Exposures



- 40** Epilogue
International Students
- 41** Cebu | Rules & Regulations
SMEAG Global Education
- 42** Tarlac | Rules & Regulations
SMEAG Global School

GREETINGS



Mr. Sunjae Hwang
President



Atty. Emmeline Sacay-Hwang
Director



Mr. Shuichiro Atsumi
Director

SMEAG Global Education has the tools to transform your dream of MASTERING English into reality.

GREETINGS. Welcome to SMEAG Global Education. English has quickly taken its position as a mandatory requirement to advance in this fast growing era of globalization. A considerable number of students start their studies with a firm determination and aim to improve their English language skills. However, in reality it is not easy to reach such a goal.

The more you treat English as a subject to study and a hurdle that you must overcome, the further you drift away from your ambitions. In order to receive the utmost achievement, you need to incorporate the use of English into your daily lifestyle. You must make it a habit to live and breathe English to obtain maximum results. Learning English is never a simple path, but with a systematic educational program specialized to conform to your appropriate level, the dream can become a reality.

SMEAG Global Education has structured and efficient dormitory services so students can ultimately focus on their studies during their stay. With the certification from British Council as an authorized IELTS exam Center, an ETS certified TOEIC center, and several partnerships with local and foreign universities, SMEAG evolves as a unique and dynamic institution of learning.

Through our professional and reliable educational curriculum and accredited testing and certification programs, we, at SMEAG, will strive to help you improve your English language skills so you can leap forward as a global talent.

With our internationally-authenticated testing and teaching programs, we work hard to provide you with the best English education ever available.

Thank You.

Mr. Sunjae Hwang
President

| A VISION FOR THE FUTURE



S

SPECIALIZED

The largest operation in the Philippines with the most highly trained teachers

With a total of 1,210 student capacity, SMEAG is the largest Education Institution in the Philippines and offers an outstanding English Study Environment. We have partnerships with international authorized testing institutions (British Council, ETS, ACT, Cambridge and Pearson) and more than 90 Universities and Global companies. Moreover, SMEAG is well-known for its highly trained teachers. After hiring outstanding teachers whose major is English literature or Education, they are trained regularly.



M

MULTINATIONAL

Students of diverse nationalities

Among more than 300 schools in the Philippines, SMEAG has the highest number of population of multinational students such as Korean, Japanese, Chinese, Taiwanese, Vietnamese, Thai, Iranian, Spanish and Russian. Also, SMEAG has multinational managers who are working together to meet students' goals. Students will naturally practice English skills to communicate with other nationalities. It is also possible in SMEAG to not only improve English skills but also to experience other cultures by meeting various nationalities.



E

EXAM PREPARATION

Authorized Testing Venues exclusively in Cebu

With a known reputation for quality and reliability as an institution of learning, SMEAG has operated authorized testing venues after passing rigorous certification processes. Both SMEAG students and outsiders can apply for all official tests: IELTS, TOEIC, TOEFL, Cambridge, BULATS, PTE and ACT.



A

ACHIEVEMENT

98% of our students achieve their scores

SMEAG's online academic management system makes it possible to manage class schedules, attendance records and test results effectively. Furthermore, all SMEAG students take a weekly mock test in each testing venue and are assessed by our trained examiners. According to recent statistics, more than 98% of the students have reached their target scores.



G

GUARANTEE PROGRAM

The guarantee program for IELTS, TOEIC, TOEFL, Cambridge and PTE-Academic

The guarantee program for each course gives our students free tuition and examination fees until the target score is achieved. Students can gain confidence in their skills. Our efficient guarantee system allows our students to achieve their target score faster and leads them to a brighter future.

HISTORY

2006

SME (SME Networks Philippines Training Center, Inc.)
 Formal Opening : Formally Opened: August 26, 2006
 ESL (English as a Second Language) course opened

2007

First English Camp

2008

Daegu Gyeongbuk Incheon - The first foreign language training abroad
 The 4th English Camp
 The 3rd English Camp
 World Agents Camp
 IELTS (International English Language Testing System) course opened
 Second Campus (Classic) opened: Mabolo area, total of 300 persons
 First Campus (Sparta) expansion: Talamban area, total of 150 persons

2009

Daegu Gyeongbuk Korean Language School's second overseas language course
 The 6th English Camp
 First Campus (Sparta) Premium English Dormitory opened: 360-persons scale
 The 5th English Camp
 Soonchunhyang University Group Study

2010

Gyeongseong High School, Hallym University, Wonkwang Health University
 My 8th English Camp
 Hanchong Sacred Heart University, Signed an agreement for overseas language study course in Daegu Account High School
 Support for Industrial Manpower Management Corporation
 Wonkwang Health University 1st group language training
 VIVA College Pathway course opened
 7th English Camp Management & IT;
 Second Campus (Classic) Expansion: Building B, total of 505 students
 Wonkwang Health Center Overseas Employment training course agreement
 Australia CIC Pathway course agreement

2015

Business English (BULATS) Course Renewal opened
 Second Japanese Language School in Kehoku, High School
 Japan Keihoku Junior High School / High School of Toyo University "Studying English Abroad" - Language Training
 Nexen Tire Company Training 6
 Established office in Taiwan
 Toyo University "Studying English Abroad" in Japan
 Japanese University Kansai University Language Training
 Nexen Tire Company Training 5
 SMEAG Global School - International (4th campus) opened
 1st Vietnam - Junior Camp
 Hankyung University Overseas Language Training Semester Program
 Nexen Tire Company Training 4
 Musashi University Language training
 Australian Farm Program
 Japan KPMG Corporate Training
 Japanese University Toyo University
 Hanyang University, Konkuk University, Wonkwang University, Hankyung University, Gachon University Group Study
 Concluded South Western University Business Agreement in detail
 Internship at Kimcheon Science University
 Tokyo GAS Corporate Training

2016

Musashi University Language School
 Toyo University "Studying English Abroad" in Japan
 Kansai University Japanese Language School
 SMEAG Family Training Program
 Language School (KUMA)
 Intensive IELTS Program (Vietnam)
 SMEAG Faculty Exchange Program Batch 6-8
 Hanyang University, Konkuk University, Seoul City University

2017

Expansion of 1st Campus (Sparta): Mabolo area, total of 440 students
 Pusan Foreign Language University, Chosun University, Hanyang University group language training
 Sejong Hotel Arts College Semester Program
 Hankyung University Semester Program
 Designated as a language school by the Philippine Tourism Board
 Became a member of PSAA (Philippine Study Abroad Association)
 Gyeongbuk Health College, Konkuk University, Geumgang University Group Study
 Toshiba Corporation of Japan Toshiba I.S. Corporation Corporate Training

2018

Chosun University, Kyungdong university, Jung won University, Konkuk University, Gyeongbuk Health College group language training
 Japan KPMG Corporate Training
 Japanese Toyo University Language Training
 Han Kyung University language training semester
 Selected as the Head of DAEAA Philippines
 Opening of 4th Campus' s New Dormitory B (SMEAG Global School)
 Opening of 5th Campus (Melbourne) : Total 720 students
 Pearson PTE Academic test center opened at the 1st Campus (Sparta)
 Opening of PTE Academic Course
 Opening of 6th Campus (Kangnam in Seoul) : IELTS Academy
 Japan Musashi University language training
 KwangHong Beauty Academy MOU signing
 First Campus (Sparta) expansion : Welfare Center
 British Council CD-IELTS test center opened at 2nd Campus

2019

Korea Hydro & Nuclear Power Company Language Training
 TMI Law Firm Language Training

2011

Contracted with GAC program and ACT, accredited by American colleges and universities

Australia IMAGINE EDUCATION and MOU Conclusion and linkage programs (Pathway Program) opened The 10th English Camp

Establishment of Conditional Admission to Canada Center College

SME IELTS Teachers' Training hosted by British Council

Pre-test on progress 1st IELTS Official Exam (Academic Module)

in the 2nd Campus (Classic) Hallym University, Wonkwang Medical College

MOU with BROWNS College in Australia

(Pathway Program) opened The 9th Car English Camp

British Council IELTS test center opened at the 2nd Campus (Classic)

IELTS Resource Center opened

2012

ETS Certified TOEIC Speaking & Writing Test Conducted Hanyang University, Wonkwang University group language training The 12th English Camp

Australia Sunshine Coast TAFE and MOU signing Linkage Program (Pathway Program) Opened

Opening of 3rd Campus (Capital): Total of 850 students Opened ETS certified TOEIC test center in the 3rd campus (Capital)

Hanyang University, Wonkwang Health University Group Study

MOU with NSW TAFE in Australia and associated programs (Pathway Program) Opened The 11th English Camp

Group students from Gumi University

Singapore Informatics Conditional Admission

Australia William Angliss TAFE and MOU signing Linkage program (Pathway Program) Opened

TOEIC course opened Cebu City, Philippines signed MOA with St. Theresa's College

Japan Rakuten Business Japanese Language Institute Designated ACT ES accredited GAC teaching center

2013

Changed the name to SMEAG Global Education

Japanese University Toyo University Language Training

Wonkwang Health College The 13th English Camp

Hanyang University, Wonkwang University Group Study

Opened a course and became an official Cambridge ESOL Test Venue

Australia Wide Bay Institute of TAFE MOU signing

Japan Hoju-Jogakuin / Tokyo International College of

Music Therapy Corporate Language Training

SEC Established (SME International Education Center)

Australia Southbank TAFE and MOU signing

Australia Le Cordon Bleu Wow MOU signing

Geumgang University, Wonkwang Health University Group Study

2014

QISA selected as the best language school in 2014

Selected as No.1 Registration Agent by British Council

Kobayashi Pharmaceutical Co., Ltd. Corporate language training

The 15th English Camp

Concluded a business agreement with University of the Philippines - Cebu

Nexen Tire Company Training 3

KPMG Corporate Language Training

Japanese University Toyo University

Kansai University "Studying English Abroad" Language Training

Tokyo Kanko Language Training

Hanyang University, Han Kyung University, Wonkwang University, Chungbuk National University Group Study

15th English Camp

1st Japanese - Junior English Camp

Nexen Tire Company Training 2

Designated as TOEFL IBT Chungbuk National University Foreign Language Semester & Internship Program

Hankyung University Overseas Language Training Semester Program

Nexen Tire Company Training 1

Japanese Toyo University Language Training

Hanyang University, Chungcheong University, Wonkwang University, Wonkwang Health College,

Kimcheon Science University group language training

The 14th English Camp

2022

Capital campus reopened

SMEAG 3rd Campus

CAPITAL



LEARN ENGLISH NATURALLY IN A CASUAL SCHOOL ENVIRONMENT!

- Acquiring IELTS/TOEIC/ TOEFL official score for occupational or educational purpose
- Improving practical English Skills needed in international business arena

LOCATION

SMEAG CAPITAL Campus is located in Guadalupe, Cebu, Philippines. Guadalupe is a political center of Cebu province where government agencies surround the CAPITOL. Many of the government's key personnel and their families reside in the residential area surrounding the Capitol making it safe and a dynamic region.

RULES AND REGULATIONS

- Weekday, weekend, and holiday outings & overnight stays are allowed with prior permission
- Curfew: 11:00pm
- Morning and Evening Sparta classes are mandatory during the first 4 weeks of study.

Facilities and Services



Program



Accredited Test Center

IELTS[™]

Official Test Centre

COMPUTER DELIVERED IELTS[™]

Homepage

www.smenglish.com



ESL by Cambridge

ESL stands for English as a Second Language. This is a program aimed at improving English proficiency so that non-native English speakers can live and learn in an English speaking environment.

ESL by Cambridge, which is based on the Cambridge exams that measure practical English proficiency, is composed of courses from Beginner to Advanced depending on the level, so we accurately measure your English level and provide a suitable learning method.

The course consists of a maximum of 625 minutes of instruction per day to improve your English skills (listening, speaking, writing, reading) through professional 1:1 lessons and to maximize short term effectiveness.

- RECOMMENDED STUDENTS**

Who lack the foundation and want intensive 1:1 classes

- Entrance Dates**

Every Monday

- Enrollment period**

More than 4 weeks

- TOTAL Class Duration : 625 mins per day**

Regular class: 270mins

Special class: 180mins

Sparta class: 175mins

- Test-Hosting agency**



Cambridge Assessment English

Campuses offering this program

Cebu Philippines	Tarlac Philippines
Capital Campus	Tarlac Global School



DAILY SCHEDULE

07:00~08:20	MORNING SPARTA [Vocabulary Class]
07:30~09:20	Breakfast
09:00~09:45	1:1 SPEAKING
09:50~10:35	1:1 LISTENING
10:45~11:30	1:1 READING
11:35~12:20	1:1 WRITING
12:20~13:20	Lunch
13:20~14:05	1:4 DISCUSSION A
14:10~14:55	1:4 DISCUSSION B
15:05~15:50	SPEACIAL CLASS 1 A
15:55~16:40	SPEACIAL CLASS 1 B
16:50~17:35	SPEACIAL CLASS 1 A
17:40~18:25	SPEACIAL CLASS 1 B
17:30~19:20	Dinner
19:20~20:55	EVENING SPARTA CAMBRIDGE Exam Preparation Class

Comparing ESL and the CEFR

Common European Framework of Reference(CEFR)	CEFR		ESL BY CAMBRIDGE
	Proficient user	C2	220
		200	
Independent user	C1	180	C1 Advanced
	B2	160	B2 First
Basic User	B1	140	B1 Preliminary
	A2	120	A2 key
	A1	100	Mover
			Flyer
			Starter

* Common European Framework (CEFR): English-speaking learners in countries where English is not spoken as their first language. It defines the level to increase the clarity of the assessment and is currently used as the standard for English evaluation around the world.



Program Description

Course		Course 1	Course 2	Course 3	Course 4
		A2 KEY	B1 Preliminary	B2 First	C1 Advanced
Configuration	Morning Sparta	Vocabulary Class			
	Regular Classes	1 : 1 Listening			
		1 : 1 Speaking			
		1 : 1 Reading			
		1 : 1 Writing			
		1 : 4 Discussion A			
Special Classes	1 : 4 Discussion B				
Evening Sparta	Survival English • Pronunciation & Accent Training • Movie • Music • Speak up				
Requirement	None	KET 140 • IELTS 3.5 TOEFL 40 • BULATS 40 TOEIC 490 • PTE 28 or above	PET 160 • IELTS 5.0 TOEFL 60 • BULATS 60 TOEIC 680 • PTE 40 or above	FCE 173 • IELTS 6.0 TOEFL 80 • BULATS 70 TOEIC 800 • PTE 57 or above	Grammar class or ESL- 2 (1:1 Speaking class)
NOTE	SMEAG Placement, SMEAG Weekly Mock Test or Official test scores can be used				
	※ [ESL 2] Power Speaking – 1:1 Power Speaking Class is provided in replacement of the regular Sparta class. (Monday to Friday except Thursday.) ※ Students are required to attend the weekly Cambridge mock test.				

Features of ESL program in each campus

	Capital Campus
Recommended Students	Students who can control themselves to study in a free atmosphere and also travel in the Philippines
Sparta Class	All new students must attend all Sparta classes only for the first 4 weeks. If not, warning will be given.

SMEAG ESL BY CAMBRIDGE Main Points

1 ESL programs suit the learner's level of English

The ESL by Cambridge course consists of four levels, from Basic to Advanced English, according to Cambridge level. By accurately grasping the English language proficiency and purpose of the learner, you can improve a balanced English ability through specialized teachers.

2 Specialized teachers divided by specific class

Teachers at SMEAG Global Education are trained for specific classes such as Reading, Speaking, Listening, Writing and Use of English which can provide essential skills and information to students.

3 ENGLISH QUALIFICATIONS VALID FOR A LIFETIME

The Cambridge Exam is an internationally recognized English language proficiency test developed by Cambridge ESOL with a history of more than 150 years. You will learn advanced English skills and earn a lifelong English certificate in full-scale exam preparation.

IELTS

IELTS is an internationally recognized English proficiency test developed by University of Cambridge ESOL Examinations, the British Council and IDP (IELTS Australia).

SMEAG's IELTS tests all four language skills – listening, reading, writing, and speaking. SMEAG offers students the best level of education owing to the best qualified teachers who go through a stringent seven-step selection criteria and two months of intensive training.

- RECOMMENDED STUDENTS**

- Who plan to study abroad or emigrate to another country
- Who need to acquire a target score in a short period of time
- Who wish to utilize a more in-depth formal English

- Entrance Date**

- Every Monday
- IELTS Guarantee course: Arranged Mondays of the month

- Enrollment period**

- More than 4 weeks 前四周默认斯巴达模式
- IELTS Guarantee course: 12 weeks

- TOTAL Class Duration: 625 Mins per day**

- Regular Class : 360 Mins
- Special Class : 90 Mins
- Sparta Class : 175 Mins

- Test-Hosting agency**



Campuses offering this program

Cebu Philippines	Tarlac Philippines
Capital Campus	Tarlac Global School



DAILY SCHEDULE

06:40~08:00	MORNING SPARTA [Vocabulary Class]
07:30~09:00	Breakfast
08:40~09:25	1:1 IELTS SPEAKING A
09:30~10:15	1:1 IELTS SPEAKING B
10:25~11:10	1:1 IELTS WRITING A
11:15~12:00	1:1 IELTS WRITING B
11:45~13:00	Lunch
13:00~13:45	1:4 IELTS READING A
13:50~14:35	1:4 IELTS READING B
14:45~15:30	1:8 IELTS LISTENING A
15:35~16:20	1:8 IELTS LISTENING B
16:30~17:15	SPEACIAL CLASS 1 A
17:20~18:05	SPEACIAL CLASS 1 B
17:30~19:00	Dinner
19:00~20:35	EVENING SPARTA IELTS Exam Preparation Class

Comparing IELTS and the CEFR

		CEFR		IELTS
Common European Framework of Reference(CEFR)	Proficient user	C2	200	8.5 - 9.0
			200	
		C1	180	7.0 - 8.0
	Independent User	B2	160	5.0 - 6.5
		B1	140	3.5 - 4.5
	Basic User	A2	120	0 - 3.0
A1		100		

* Common European Framework (CEFR): English-speaking learners in countries where English is not spoken as their first language. It defines the level to increase the clarity of the assessment and is currently used as the standard for English evaluation around the world.



Program Description

Course	Course 1	Course 2	Course 3	Course 4	Course 5
	Pre-IELTS	IELTS5.5	IELTS6.0	IELTS6.5	IELTS7.0
Configuration	Morning Sparta	Vocabulary Class			
	Regular Classes (Mandatory)	1: 1 IELTS Speaking A	1:1 Speaking A		
		1: 1 IELTS Speaking B	1:1 Speaking B		
		1: 1 IELTS Writing A	1:1 Writing A		
		1: 1 IELTS Writing B	1:1 Writing B		
		1: 4 IELTS Reading A	1: 4 Reading A		
		1: 4 IELTS Reading B	1: 4 Reading B		
		1: 8 IELTS Listening A	1: 8 Listening A		
	1: 8 IELTS Listening B	1: 8 Listening B			
	Special Classes (Optional)	[Music & Sitcom, English Expressions, Speak up, Movie, Pronunciation Classes]			
Evening Sparta	IELTS Exam Preparation				
REQUIREMENTS	None	KET 140 • IELTS 3.5 TOEFL 40 • BULATS 40 TOEIC 490 • PTE 28 or above	PET 160 • IELTS 5.0 TOEFL 60 • BULATS 60 TOEIC 680 • PTE 40 or above	FCE 173 • IELTS 6.0 TOEFL 80 • BULATS 70 TOEIC 800 • PTE 57 or above	Valid Official IELTS 6.5 or above
PERIOD FOR GUARANTEE	None	※ 12 weeks enrollment (course registration period) ※ Guarantee students must follow the entrance date and finalize which module will be taken upon registration.			
GUARANTEE BENEFITS	None	※ Free tuition fee will be provided until the target score is achieved ※ Only for students who have a 100% regular & Sparta class attendance rate and no warnings during the 12 weeks of course period (Residing in campus is mandatory / Students cannot change their course.)			
OFFERED EXAM	None	※ Students with a 12-week enrollment period will be given a free actual examination fee (If Students receive 3 warnings from academic or admin department during the 12 weeks of course period, the eligibility and benefit will be automatically forfeited.) ※ Free official exam is to be taken 10 weeks after the date of entry.			
NOTE	※ All students are required to take a placement test to determine their readiness and level for the course enrolled, ※ Students are required to maintain a complete attendance in Sparta Classes for the first 4 weeks of enrollment as well as a perfect attendance in the weekly IELTS Mock Tests during their study period. ※ Warning will be given to students as shown below: Students whose attendance rate is under 90% Students who are absent from the Mock Test or commit an act of fraud.				

SMEAG IELTS Main Points

1 British Council authorized "Official IELTS Testing Venue"

SMEAG is the first and only Authorized Official IELTS Testing venue among all English language academies in the Philippines. Since July 2011, SMEAG Training Center, together with the British Council, has been conducting the official IELTS test in Classic Campus. In addition, we opened the Computer Delivered IELTS test site in 2018.

2 British Council sponsored "Official Test Trainer Seminar"

SMEAG host an IELTS Workshop conducted by the British Council. The Workshop involves utilizing Newest and Accurate information of IELTS in training the teachers for 8 hours. Consequently, SMEAG students are able to experience a better quality of IELTS education through their teachers and the experience helps students to get higher score.

3 IELTS RESOURCE CENTRE

SMEAG IELTS RESOURCE CENTRE (IRC) keeps the latest IELTS resources from British Council. IELTS RESOURCE CENTRE provides a variety of study materials for the test takers:

- Latest IELTS Preparation Course Book
- The latest IELTS practice workbooks.
- Audio CDs and DVDs related to studying abroad

TOEFL

TOEFL developed by America ETS (Educational Testing Service) measures English abilities at a university level for non-native people who plan to enter University or Graduate School in America, Canada, Australia, England and etc.

TOEFL Test evaluates 4 English skills such as Listening, Reading, Writing, and Speaking of the students who plan to enter University or Graduate School. TOEFL exam proctors at SMEAG Capital Campus are directly trained by ETS resulting to much more effective TOEFL classes.

- **Recommended Students**

- Who plan to study abroad or emigrate to another country
- Who need to acquire a TOEFL target score in a short period of time
- Who wish to utilize a more in-depth formal English

- **Entrance Date**

- Every Monday
- TOEFL Guarantee course: Arranged Mondays of the month

- **Enrollment period**

- More than 4 weeks
- TOEFL Guarantee course: 12 weeks

- **TOTAL Class duration: 625 Mins per day**

- Regular Class : 360 Mins
- Special Class : 90 Mins
- Sparta Class : 175 Mins

- **Test-Hosting agency**



Campuses offering this program

Cebu Philippines	Tarlac Philippines
Capital Campus	Tarlac Global School



DAILY SCHEDULE

06:40~08:00	MORNING SPARTA [Vocabulary Class]
07:30~09:00	Breakfast
08:40~09:25	1:1 TOEFL SPEAKING A
09:30~10:15	1:1 TOEFL SPEAKING B
10:25~11:10	1:1 TOEFL WRITING A
11:15~12:00	1:1 TOEFL WRITING B
11:45~13:00	Lunch
13:00~13:45	1:4 TOEFL READING A
13:50~14:35	1:4 TOEFL READING B
14:45~15:30	1:8 TOEFL LISTENING A
15:35~16:20	1:8 TOEFL LISTENING B
16:30~17:15	GROUP STUDY A
17:20~18:05	GROUP STUDY B
17:30~19:00	Dinner
19:00~20:35	EVENING SPARTA TOEFL Exam Preparation Class

Comparing TOEFL and the CEFR

		CEFR		TOEFL
Common European Framework of Reference(CEFR)	Proficient user	C2	200	102 - 120
			200	
	Independent user	C1	180	61 - 101
		B2	160	
Basic User	B1	140	32 - 60	
	A2	120		
	A1	100		

* Common European Framework (CEFR): English-speaking learners in countries where English is not spoken as their first language. It defines the level to increase the clarity of the assessment and is currently used as the standard for English evaluation around the world.



Program Description

Course	Course 1	Course 2	Course 3	Course 4	Course 5
	PRE TOEFL	TOEFL 60	TOEFL 80	TOEFL 90	TOEFL 100
Configuration	Morning Sparta	Vocabulary Class			
	Regular Classes (Mandatory)	1 : 1 Pre- R/W A		1 : 1 Speaking A	
		1 : 1 Pre- R/W B		1 : 1 Speaking B	
		1 : 1 Pre- L/S A		1 : 1 Writing A	
		1 : 1 Pre- L/S B		1 : 1 Writing B	
		1 : 4 Pre- Reading A		1 : 4 Reading A	
		1 : 4 Pre- Reading B		1 : 4 Reading B	
		1 : 8 TEST PRACTICE A		1 : 8 Listening A	
		1 : 8 TEST PRACTICE B		1 : 8 Listening B	
	Special Classes (Optional)	TOEFL Focus: vocabulary, useful expressions, grammar patterns, templates			
Evening Sparta	TOEFL Exam Preparation				
REQUIREMENTS	None	Official scores: KET 140 • IELTS 3.5 TOEFL 40 • BULATS 40 TOEIC 490 • PTE 28 or above	Official scores: PET 160 • IELTS 5.0 TOEFL 60 • BULATS 60 TOEIC 580 • PTE 40 or above	Official scores: FCE 173 • IELTS 6.0 TOEFL 80 • BULATS 70 TOEIC 800 • PTE 57 or above	Valid Official TOEFL 90 or above
PERIOD FOR GURANTEE	None	※ 12 weeks enrollment (course registration period) ※ Guarantee students must follow the entrance date			
GUARANTEE BENEFITS	None	※ Free tuition fee will be provided until the target score is achieved ※ Only for students who have a 100% regular & Sparta class attendance rate and no warnings during the 12 weeks of course period (Residing in campus is mandatory / Students cannot change their course)			
OFFERED EXAM	None	※ Students with a 12-week enrollment period will be given a free actual examination fee (If Students receive 3 warnings from academic or admin department during the 12 weeks of course period, the eligibility and benefit will be automatically forfeited.) ※ Free official exam is to be taken 10 weeks after the date of entry.			
NOTE	※ All students are required to take a placement test to determine their readiness and level for the course enrolled. ※ Students are required to maintain a complete attendance in Sparta Classes for the first 4 weeks of enrollment as well as a perfect attendance in the weekly TOEFL Mock Tests during their study period. ※ Warning will be given to students as shown below: Students whose attendance rate is under 90% Students who are absent from the Mock Test or commit an act of fraud.				

SMEAG TOEFL Main Points

1 ETS Authorized "TOEFL Testing Venue"

SMEAG CAPITAL CAMPUS was an authorized iBT TOEFL Testing Venue in Cebu, Philippines verified by ETS which manages TOEIC and TOEFL throughout the world. Since 2014 to 2020, official iBT TOEFL TEST has commenced in SMEAG CAPITAL CAMPUS managed by both SMEAG Global Education and ETS.

2 iBT TOEFL Weekly Mock Test

SMEAG's customized TOEFL program helps students obtain their target score. Every Thursday, SMEAG provides students a chance to practice iBT/CBT Mock Test in the testing venue.

3 TOEFL Guarantee Program

After enrolling in the TOEFL Course at SMEAG Global Education and when students cannot get their target score, SMEAG provides free tuition and exam fees. Accommodation & other miscellaneous fees (Visa / electric & water / textbook) are excluded. Students should maintain 100 % complete attendance in regular classes and without a warning. This benefit will be provided until students obtain their target score.

TOEIC

Developed by ETS (Education Testing Service) in 1979, TOEIC (Test of English for International Communication) is an English language test designed specifically to measure the everyday English skills of people working in a globally competitive workplace.

TOEIC Program at SMEAG Global Education

SMEAG Campus 3's R&D Team does not only develop the TOEIC Program for the students who want to improve their English skills, but also does thorough research on the latest question trends that are applied to SMEAG TOEIC Coursebooks. Moreover, SMEAG CAPITAL CAMPUS is the only authorized TOEIC Testing Venue in Cebu certified by ETS.

- Recommended to Students**

- Who plan to study abroad or emigrate to another country
- Who need to acquire a specific TOEIC score in a short period of time
- Who wish to utilize a more in-depth formal English

- Entrance Date**

- Every Monday
- TOEIC Guarantee course: Arranged Mondays of the month

- Enrollment period**

- More than 4 weeks
- TOEIC Guarantee course: 12 weeks

- TOTAL Class duration : 625 Mins per day**

- Regular class: 270mins
- Special class: 180mins
- Sparta class: 175mins

- Test-Hosting agency**



Campuses offering this program

Cebu Philippines	Tarlac Philippines
Capital Campus	Tarlac Global School



DAILY SCHEDULE

06:40~08:00	MORNING SPARTA [Vocabulary Class]
07:30~09:00	Breakfast
08:40~09:25	1:1 TOEIC FOUNDATION A
09:30~10:15	1:1 TOEIC FOUNDATION B
10:25~11:10	1:1 TOEIC READING A
11:15~12:00	1:1 TOEIC READING B
11:45~13:00	Lunch
13:00~13:45	1:4 TOEIC LISTENING A
13:50~14:35	1:4 TOEIC LISTENING B
14:45~15:30	SPEACIAL CLASS 1 A
15:35~16:20	SPEACIAL CLASS 1 B
16:30~17:15	SPEACIAL CLASS 2 A
17:20~18:05	SPEACIAL CLASS 2 B
17:30~19:00	Dinner
19:00~20:35	EVENING SPARTA TOEIC Exam Preparation Class

Comparing TOEIC and the CEFR

Common European Framework of Reference(CEFR)		CEFR		TOEIC
Proficient user	C2	220	200	950 – 990
		180		
Independent user	B2	160	140	750 – 880
		140		
Basic User	A2	120	100	550 – 750
		100		
	A1			

* Common European Framework (CEFR): English-speaking learners in countries where English is not spoken as their first language. It defines the level to increase the clarity of the assessment and is currently used as the standard for English evaluation around the world.



Program Description

Course		Course 1	Course 2	Course 3	Course 4	Course 5
		PRE TOEIC	TOEIC 600	TOEIC 700	TOEIC 800	TOEIC 900
Configuration	Morning Sparta	Vocabulary Class				
	Regular Classes (Mandatory)	1 : 1 Pre-TOEIC Reading A		1 : 1	TOEIC Foundation A	
		1 : 1 Pre-TOEIC Reading B		1 : 1	TOEIC Foundation B	
		1 : 1 Pre-TOEIC Listening A		1 : 1	TOEIC Reading A	
		1 : 1 Pre-TOEIC Listening B		1 : 1	TOEIC Reading B	
		1 : 4 DISCUSSION A		1 : 4	TOEIC Listening A	
1 : 4 DISCUSSION B		1 : 4	TOEIC Listening B			
Special Classes (Optional)	Survival English • Pronunciation & Accent Training • Movie • Music • Speak up					
Evening Sparta	TOEIC Exam Preparation					
REQUIREMENTS		None	Official scores: KET 140 • IELTS 3.5 TOEFL 40 • BULATS 40 TOEIC 490 • PTE 28 or above	Official scores: PET 160 • IELTS 5.0 TOEFL 60 • BULATS 60 TOEIC 680 • PTE 40 or above	Official scores: FCE 173 • IELTS 6.0 TOEFL 80 • BULATS 70 TOEIC 800 • PTE 57 or above	Valid Official TOEIC 800 or above
NOTE		※ All students are required to take a placement test to determine their readiness and level for the course enrolled. ※ Students are required to maintain a complete attendance in Sparta Classes for the first 4 weeks of enrollment as well as a perfect attendance in the weekly TOEIC Mock Tests during their study period. ※ Warning will be given to students as shown below: • Students whose attendance rate is under 90% • Students who are absent from the Mock Test or commit an act of fraud				

SMEAG TOEIC Main Points

1 ETS Authorized "TOEIC Testing Venue"

SMEAG CAPITAL CAMPUS was an authorized TOEIC Testing Venue verified by ETS. From July of 2012 to 2020, an official TOEIC test has been offered in the campus managed by SMEAG and ETS.

(TOEIC Listening & Reading / TOEIC Speaking & Writing)

2 TOEIC Speaking & Writing Class

Customized Speaking & Writing classes help students improve their skills. SMEAG Global Education will provide Speaking & Writing Classes to students with a chance to practice iBT/CBT Mock Test in the testing venue. This experience can make students obtain their target score more quickly.

3 TOEIC Guarantee Program

After enrolling in the TOEIC Course at SMEAG Global Education and when the students cannot get their target score, SMEAG provides free tuition and exam fees, Accommodation & other miscellaneous fees (Visa / electric & water / textbook) are excluded. Students should maintain 100% complete attendance of regular classes and without a warning. This benefit will be provided until students obtain the target score.

BUSINESS

By learning the English expressions and business etiquette commonly used in international business arena, it is possible to adapt to the work environment and grow as a professional experts worldwide.

SMEAG's BUSINESS ENGLISH is a program that integrates BULATS test, which is an English proficiency test from the University of Cambridge. It is designed as a multipurpose curriculum which is related to business field such as job recruitment, Business English proficiency test, and preparation for entrance of business related major courses. In addition, SMEAG Capital Campus is an authorized testing center for TOEIC and TOEFL by ETS and BULATS by Cambridge for our students to get their official score that can be used all over the world and makes our school a conducive environment for study.

- Recommended Students**

Who wish to work for a global company and manage customers from various foreign countries,

Who want to learn techniques in delivering business knowledge to a group of individuals

Who want to get an effective English speaking drill for English interview, discussion and accredited English speaking exam

- Entrance Date**

Every Monday

- Enrollment period**

More than 4 weeks

- TOTAL Class duration:**

625 Mins per day

Regular class: 450mins

Sparta class: 175mins

- Test-Hosting agency**



Campuses offering this program

Cebu Philippines	Tarlac Philippines
Capital Campus	Tarlac Global School



DAILY SCHEDULE

06:40~08:00	MORNING SPARTA [Vocabulary Class]
07:30~09:00	Breakfast
08:40~09:25	1:1 BUSINESS SPEAKING A
09:30~10:15	1:1 BUSINESS SPEAKING B
10:25~11:10	1:1 BUSINESS WRITING A
11:15~12:00	1:1 BUSINESS WRITING B
11:45~13:00	Lunch
13:00~13:45	1:1 BUSINESS READING A
13:50~14:35	1:1 BUSINESS READING B
14:45~15:30	1:1 BUSINESS LISTENING A
15:35~16:20	1:1 BUSINESS LISTENING B
16:30~17:15	1:4 BUSINESS DISCUSSION / PRESENTATION A
17:20~18:05	1:4 BUSINESS DISCUSSION / PRESENTATION B
17:30~19:00	Dinner
19:00~20:35	EVENING SPARTA General English Practice Test

Comparing Business and the CEFR

		CEFR		BULATS
Common European Framework of Reference(CEFR)	Proficient user	C2	220 200	90 - 100
		C1	180	75 - 89
	Independent user	B2	160	60 - 74
		B1	140	
	Basic User	A2	120	40 - 59
		A1	100	20 - 40

* Common European Framework (CEFR): English-speaking learners in countries where English is not spoken as their first language. It defines the level to increase the clarity of the assessment and is currently used as the standard for English evaluation around the world.



Program Description

Course		Course 1	Course 2	코스3
		BUSINESS 1	BUSINESS 2	BUSINESS 3
Configuration	Morning Sparta	Vocabulary Class		
	Regular Classes (Mandatory)	1 : 1 Speaking A		
		1 : 1 Speaking B		
		1 : 1 Writing A		
		1 : 1 Writing B		
		1 : 1 Reading A		
		1 : 1 Reading B		
	Evening Sparta	1 : 1 Listening A		
1 : 1 Listening B				
REQUIREMENTS		None	KET 140 • IELTS 3.5 • TOEFL 40 BULATS 40 TOEIC 490 • PTE 28	PET 160 • IELTS 5.0 • TOEFL 60 BULATS 60 • TOEIC 680 • PTE 40
OFFERED EXAM		SMEAG Placement, SMEAG Weekly Mock Test or Official test scores can be used.		
NOTE		※ Students with a 12-week enrollment period will be given a free BULATS preparation course (a week before the test) and registration for BULATS examination. (If Students receive 3 warnings from academic or admin department during the 12 weeks of course period, the eligibility and benefit will be automatically forfeited.) ※ 100% mandatory attendance for regular classes, 4-week mandatory attendance for Sparta classes ※ Weekly BULATS Mock Test 100% complete Attendance ※ Warning will be given to students as shown below: Students whose attendance rate is under 90% Students who are absent from the Mock Test or commit an act of fraud.		

SMEAG Business Main Points

1 Cambridge Authorized "BULATS Testing Venue"

SMEAG CAPITAL CAMPUS is an official testing center authorized by ETS and became an authorized BULATS testing center of CAMBRIDGE. BULATS (Business Language Testing Service) is a University of Cambridge English language proficiency examination. There are more than 11,000 companies and organizations worldwide that use BULATS to improve their employees' business English skills.

2 Enhancement of Presentation Skills

Through concentration on communication and presentation skills, the students are engaged to different presentation activities and the constructive feedback of the instructors makes a holistic and developmental progress of their skills.

3 Intensive Business Training

Regular class of 450 minutes a day in practical business preparation course. It allows you to develop equally your communication skills in professional world and also in general conversations. It is suitable for students who wish to have short-term class with maximum effects.

FAMILY PROGRAM

SMEAG's family training program is based on the Cambridge YLE (Cambridge Young learners English). This course aims to learn useful English and basic English skills so that you can write and speak in English everyday.

With the Cambridge YLE selected by parents from 68 countries around the world to help your child learn effective English, you can see how well your child is improving his or her English language skills on an internationally recognized basis.

- Recommended Students**

Those who wish to study together with their children from 6 to 12 years old

- Entrance Date**

Every Monday

- Enrollment period**

More than 4 weeks

- TOTAL Class duration: 500 Mins per day**

Regular class: 270mins

Activity class : 135mins (Children Only)

Sparta class: 95mins (Children Only)

- Test-Hosting agency**



Cambridge Assessment English



DAILY SCHEDULE

07:30~09:20	Breakfast
09:00~09:45	1:1 SPEAKING
09:50~10:35	1:1 LISTENING
10:45~11:30	1:1 READING
11:35~12:20	1:1 WRITING
12:20~13:20	Lunch
13:20~14:05	1:4 DISCUSSION A
14:10~14:55	1:4 DISCUSSION B
15:05~15:50	ACTIVITY CLASS SWIMMING • ZUMBA • GOLF • MUSIC • COOKING
15:55~16:40	
16:50~17:35	FREE TIME
17:40~18:25	Dinner
17:30~19:20	FREE TIME
19:20~20:55	EVENING GROUP CLASS

Campuses offering this program

Cebu Philippines	Tarlac Philippines
Capital Campus	Tarlac Global School

Comparing YLE and the CEFR

Common European Framework of Reference (CEFR)		CEFR		CAMBRIDGE YLE
Proficient user	C2	220		
		200		
Independent user	C1	180		
Basic User	B2	160		
Basic User	B1	140		PET
Basic User	A2	120		KET
Basic User	A1	100		Mover
				Flyer
				Starter

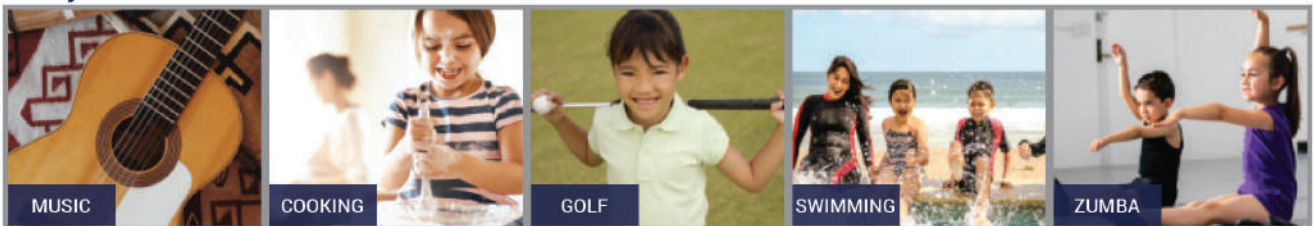
* Common European Framework (CEFR): English-speaking learners in countries where English is not spoken as their first language. It defines the level to increase the clarity of the assessment and is currently used as the standard for English evaluation around the world.



Program Description

Course	Children					Parents	
	Starter	Mover	Flyer	KET	PET	ESL by Cambridge	
Configuration	Regular Classes (Mandatory)	1 : 1 Listening					1 : 1 Listening
		1 : 1 Speaking					1 : 1 Speaking
		1 : 1 Reading					1 : 1 Reading
		1 : 1 Writing					1 : 1 Writing
		1 : 4 Discussion A					1 : 4 Discussion A
		1 : 4 Discussion B					1 : 4 Discussion B
	Evening Sparta	Daily Activity Class Group Class by Level					FREE TIME
	Starter	Mover	Flyer	KET	PET		
	Fun learning English	Reading Story Book	Vocabulary	Vocabulary & Idioms	Speak -up		
REQUIREMENTS	SMEAG Placement, SMEAG Weekly Mock Test or Official test scores can be used.						
NOTE	※ 100% mandatory attendance for regular classes ※ Weekly cambridge yle mock test 100% complete attendance (for children only)						

Daily Activities



SMEAG Family Program Plus Main Point

1 | 1:1 ONLINE CLASS

After graduating from SMEAG, we provide a 25-minute 1:1 class for children (Mon to Fri).

2 | SAME DURATION

Family Program Duration = Online Classes Duration
 Provision of online class with the same study period as the Family Program's time frame.

3 | RELIABLE CURRICULUM

The best program for children "Cambridge YLE"
 The same textbooks are used in the online classes as it is in family program.

SMEAG 4th Campus

GLOBAL SCHOOL



THE CRADLE OF INTERNATIONAL PIONEERS

- Offering GAC/ACT program, the first step towards prestigious schools overseas.
- Holding a Global Junior Camp for multinational students

LOCATION

Tarlac is located in the heart of the largest part of Luzon Island (about 5 times the peninsula) in the Philippines and is a land transportation hub connecting the northern and southern Luzon provinces. It is very clean and safe, adjacent to the free economic zone and Clark International Airport. SMEAG's 4th campus is located just 30 minutes away from Clark International Airport.

RULES AND REGULATIONS

- Overnight stays is strictly prohibited during the semester
- Weekend and holiday outings are allowed only if students want to participate in school activities.
- Wake up time: 06:50 AM, bed time: 11:00 pm (morning and evening roll-call)
- Negative and Positive points system (holds a disciplinary system and awarding every month)

Facilities and Services



Program

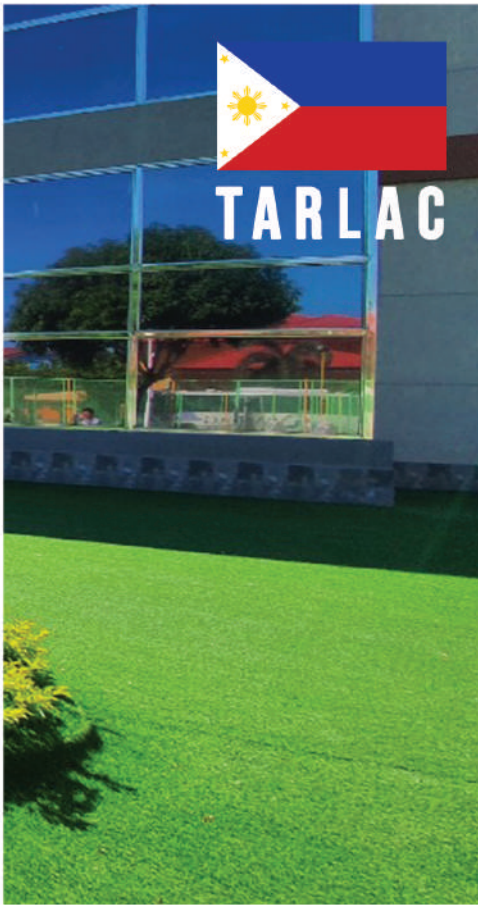


Accredited Test Center



Homepage

www.smeagschool.com





Elementary School (Grade 1 - 6)

SMEAG Global School's Elementary courses are offered in three classes: English, Math, and Science. In addition to the regular classes, we offer ESL Intensive English classes, which are tailored to students' age and English level, based on reliable Cambridge materials (YLE, KET, PET). In the SMEAG Global School Elementary course, both regular and intensive English classes are offered at the same time, helping students to learn and prepare them for a higher institutional learning.

- **Target Students**

Students whose age ranges from 7–12 years old and should be able to prove their abilities based from their previous records

- **Recruitment schedule**

Annually until the first week of August [before the start of the academic year]

- **Number of lessons**

3 regular classes; 4 intensive English classes; 4 additional activities per day



DAILY SCHEDULE

06:50~07:00	Morning Roll call
07:00~08:00	Breakfast
08:00~08:50	Science
09:00~09:50	Math
10:00~10:50	English
11:00~11:30	Grammar
11:30~12:50	Lunch
12:50~13:40	Speaking (ESL)
13:50~14:40	Writing (ESL)
14:50~15:40	Reading (ESL)
15:50~16:40	Supervision
16:40~17:30	Daily Activity
17:30~19:00	Dinner
19:00~19:50	Night class – Red diary / Vocabulary
20:00~20:50	Night class – Sports Activity
21:20~21:50	Evening Roll call

School Year Schedule

Year	2023								2024			
	Sep	Oct	Nov	Dec	Jan	Feb	Mar	Apr	May	Jun	Jul	Aug
Grade 1–12	1 Semester				2 Semester				Vacation			



Program Summary

Program		ESL by Cambridge				
		Starter	Mover	Flyer	KET	PET
Classification	Regular Class		Mon ~ Fri			Sat ~ Sun
			Science			Sat - Mock Test/ Sun - Free time
			Math			
	English Class		English			In/Outdoor Activity *Outdoor activity with instructor
			Grammar			
			Speaking			
Night Class		RED Diary / Vocabulary - Group Class by Level			Free time	
Admission requirements		Possible to assess and change your level with entrance test or weekly mock test score				
Regulation		<ul style="list-style-type: none"> ※ Have to take regular class ※ Have to take mock test every week (Not allowed to be absent / warning for cheating) 				

SPORTS & ACTIVITIES





Junior High School (Grade 7-10)

The Junior High School Program at SMEAG Global School consists of four to six years of classes in the 7th and 10th grades. The regular classes are divided into three categories: English, Math, and Science.

In addition to the regular classes, we also offer intensive English classes using the TOEFL and IELTS textbooks.

At SMEAG Global School's Junior High course, you will learn English language courses that are recognized internationally, thereby reducing the burden on higher-level subject learning and raising students' confidence.

• Target Students

Students whose age ranges from 13–16 years old and should be able to prove their abilities based from their previous records

• Recruitment schedule

Annually until the first week of August [before the start of the academic year]

• Number of lessons

3 regular classes; 4 intensive English classes;
4 additional activities per day



DAILY SCHEDULE	
06:50~07:00	Morning Roll call
07:00~08:00	Breakfast
08:00~08:50	Science
09:00~09:50	Math
10:00~10:50	English
11:00~11:30	Grammar
11:30~12:50	Lunch
12:50~13:40	Speaking (TOEFL/IELTS)
13:50~14:40	Writing (TOEFL/IELTS)
14:50~15:40	Reading (TOEFL/IELTS)
15:50~16:40	Supervision
16:40~17:30	Daily Activity
17:30~19:00	Dinner
19:00~19:50	Night class – Red diary / Vocabulary
20:00~20:50	Night class – Sports Activity
21:20~21:50	Evening Roll call

School Year Schedule

Year	2023							2024					
	Sep	Oct	Nov	Dec	Jan	Feb	Mar	Apr	May	Jun	Jul	Aug	
Grade 1–12	1 Semester				2 Semester				Vacation				



Program Summary

Program		Mon ~ Fri			Sat ~ Sun
		Course 1	Course 2	Course 3	
		Pre IELTS	IELTS 5.5	IELTS 6.0	Sat - Mock Test/ Sun - Free time
		Pre TOEFL	TOEFL 60	TOEFL 80	
Classification	Regula Class	Science			
		Math			
		English			
	English Class	Grammar			
		Pre - Speaking	Speaking		
Night Class	Pre - Reading	Reading			
	Pre - Writing	Writing			
		RED Diary / Vocabulary - Group Class by Level			Free time
Admission requirements		KET 140 • IELTS 3.5 • TOEFL 40 or above.			-
		Possible to assess and change your level with entrance test or weekly mock test score			
Regulation		※ Have to take regular class ※ Have to take mock test every week (Not allowed to be absent / warning for cheating)			

SPORTS & ACTIVITIES





Senior High School (Grade 11-12)

SMEAG Global School's Senior High School Program consists of two-year courses in the 11th and 12th grades. The Department of Education in the Philippines now implements the K-12 Curriculum where the remaining two years of education prepares them for university culture. We offer Accountancy, Business and Management Strand under the Academic Track and the regular classes are focusing on English, Math / Accounting, and Physical Science. In addition to regular classes, you can also take IELTS / SAT / AP classes to gain internationally recognized English language scores and prepare for college. In addition to regular classes, all classes are designed for college preparation, and students acquire the necessary academic English before entering college.

• Target Students

Students whose age ranges from 13-16 years old and should be able to prove their abilities based from their previous records

• Recruitment schedule

Annually until the first week of August [before the start of the academic year]

• Number of lessons

3 regular classes; 3 SAT / AP classes,
2 intensive English classes; IELTS per day



DAILY SCHEDULE

06:50~07:00	Morning Roll call
07:00~08:00	Breakfast
08:00~08:50	Science
09:00~09:50	Math
10:00~10:50	English
11:00~11:30	Grammar
11:30~12:50	Lunch
12:50~13:40	SAT / AP
13:50~14:40	SAT / AP
14:50~15:40	SAT / AP
15:50~16:40	Daily Activity
16:40~17:30	Daily Activity
17:30~19:00	Dinner
19:00~19:50	Night class – IELTS
20:00~20:50	Night class – IELTS
21:20~21:50	Evening Roll call

School Year Schedule

Year	2023							2024				
Month	Sep	Oct	Nov	Dec	Jan	Feb	Mar	Apr	May	Jun	Jul	Aug
Grade 1-12	1 Semester				2 Semester				Vacation			



Program Summary

Program		Mon ~ Fri		
		Course 1	Course 2	Course 3
		IELTS 5.5	SAT	AP
Classification	Regular Class	Physical Science		
		Math / Accounting		
		English Literature		
	IELTS	IELTS – Speaking	SAT – Math	AP each subject
	SAT	IELTS – Writing	SAT – Writing	AP each subject
AP	IELTS - Reading	SAT - Reading	AP each subject	
	Night Class	IELTS – Listening	IELTS	IELTS
Admission requirements		IELTS 3.5 TOEFL 40 or above	IELTS 5.5 TOEFL 70 or above	IELTS 6.5 TOEFL 90 or above
Possible to assess and change your level with entrance test or weekly mock test score				

SPORTS & ACTIVITIES





Scholastic Aptitude Test SAT Course

What is SAT?

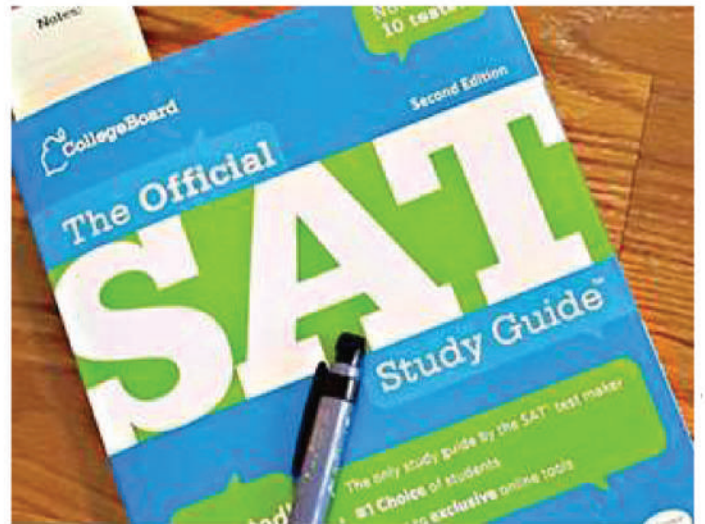
SAT is a standardized test widely used for college admissions in the United States and it is the most researched admissions test. The SAT is the standardized assessment of the critical reading, mathematical reasoning, and writing skills. Each year, more than two million students take the SAT.

Nearly every college in America uses the test as a common and objective scale for evaluating a student's college readiness.

SAT score is the standard in reliability and validity and an internationally recognized, accurate measure of college readiness and scholarship potential.

Why take the SAT?

All college accept the SAT as an objective measurement of students' college readiness. Used with GPAs and high school transcripts, SAT scores allow colleges to fairly compare applicants. Taking the SAT gives students access to scholarship opportunities. Most college require an admission test like the SAT. The SAT provides the students with the most comprehensive performance feedback of any admission test. Many institutions require a writing assessment for admission. Students who take the SAT automatically fulfill such requirements.



SAT		
MATHEMATICS	READING	WRITING AND LANGUAGE
Math Test - No Calculator 25 minutes, 20 questions	52 questions 65 minutes	44 questions 35 minutes
Math Test - Calculator 55 minutes, 38 questions		





Advance Placement **AP Course**

What is AP ?

AP Exams are standardized exams designed to measure how well you've mastered the content and skills of specific AP course. This is a system that allows you to apply for college credits after studying for one year, taking an official exam hosted by the College Board in May of each year and announced in July.

Why take the AP ?



Earn College Credit and Placement

Your AP score could earn you college credits before you even set foot on campus. In fact, most AP students who enroll in four-year colleges start school with some credit.



Save Money and Time

Earning credit or placement can open up time on your schedule or even let you graduate early.



Stand Out to Colleges

"AP" on your high school transcript shows colleges you're motivated to succeed, and taking the exam demonstrates your commitment to tackle and complete college-level work.



Keep Your Options Open

Earning college credit with AP can give you the flexibility to change majors, pursue a second degree, study abroad, or seek internships.





Global Junior Camp

SMEAG GLOBAL SCHOOL – raising global talents with international sense

It is an international school aiming to produce worldclass human resources with an international sense by aiming to go directly to a prestigious university abroad for a long period of time away from merely cultivating talented people who have a good reputation in language.

In the Intensive English Study Program, teachers ensure that the students' overall welfare is carefully manage to help improve the English language proficiency at a short period of time.

From SMEAG Global School Tarlac Philippines, it is a Global Vision Camp that enables you to acquire the English proficiency needed in international competitive society through personality education.



- **Organized by**

SMEAG Global Education

- **Location**

SMEAG GLOBAL SCHOOL(Tarlac, Philippines)

- **Period**

SUMMER CAMP : Middle of July ~ End of August (4, 6 Weeks)

WINTER CAMP : End of December ~ Middle of February (4, 6, 8 Weeks)

- **Course**

ESL(Elementary student), TOEFL/IELTS(Middle High School student)

- **Target of recruitment**

Grade 3 ~ Grade 10





Program Summary

ESL

For Grade 3 ~ 6

The ESL program for elementary students offers Elementary, Pre-intermediate I, Pre-Intermediate II, Intermediate I, Intermediate II, a total of five levels, aiming to develop speaking and listening skills and build confidence in English.

The SMEAG JUNIOR ESL program covers all four areas of English Speaking, Listening, Writing and Reading and focuses on improving the speaking and listening abilities that are fundamental to language study. Students can maximize the output of English usage through various context settings and activities in class.

ELEMENTARY	PRE-INTERMEDIATE I & II	INTERMEDIATE I & II
<p>Elementary program focuses on improving your English ability and confidence through simple contexts. Through this process, you can improve the foundation of English based on maximizing your English conversational skills.</p>	<p>Pre-Intermediate I aims to speak English at a level that understands the flow of sentences beyond speaking and listening. Furthermore were maximizing the use of English through group training</p> <p>Pre-Intermediate II Focuses on using words and grammar appropriate for English conversation. Group lessons enable you to effectively learn English skills and learning methods,</p>	<p>Intermediate I can strengthen your English language skills by strengthening the four basic areas of English so you can use them freely. By learning the autonomous learning method, it strengthens the foundation of Academic learning.</p> <p>Intermediate II allows you to speak English at a level that encourages you to logically communicate through topic discussions based on your use of Academic English. This allows students to understand and use a wide variety of sentences.</p>

TOEFL/IELTS : For Grade 7 ~ 10

1st to 3rd grade, 1st to 2nd grade.

The TOEFL / IELTS program allows students to master the structure of the sentence with vocabulary memorization and learn how to become familiar with many sentence structures and expressions. The Speaking & Listening Skills are vital, we help them develop writing skills and discussion-learning skills through note-taking / summary training classes on various topics, and Speaking / Writing / Reading / Listening. Finally, the goal of this program is to build confidence in communicating with the English language.

TOEFL/IELTS Intermediate	TOEFL/IELTS Advanced
<p>Improved Listening Skill through various topics of conversation and discussions Improvement of spoken ability especially in English Speaking Simple but easy-to-use sentences in the writing area</p> <p>TOEFL / IELTS intermediate is an appropriate mix of academic sections that will help you master grammar, vocabulary and pronunciation as well as Speaking, Reading, Listening, and Writing.</p>	<p>Establish various listening skills through conversation and discussions Improvement of reading ability of various genres Acquisition of profound speaking ability to use proper vocabulary, grammar and correct pronunciation Improvement of various writing skills of several genres</p> <p>TOEFL / IELTS Advanced allows you to concentrate on Speaking, Reading, Writing and Listening, as well as advanced English through written discussions and oral presentations. Students will be able to compose Academic sentences, logically discuss various English discussions, use advanced sentences, and understand and use sentences of various genres.</p>

Weekly Schedule

Week	Schedule						
	Day1	Day2	Day3	Day4	Day5	Day6	Day7
1 st week	Acquaintance,OT /Level Test	Regular Class	Regular Class	Regular Class	Regular Class	Regular Class	Weekly Test
2 nd week	Day 8	Day 9	Day 10	Day 11	Day 12	Day 13	Day 14
	Regular Class	Regular Class/ Horse Riding A	City Tour/ Shopping 1	Regular Class	Regular Class/ Horse Riding B	Regular Class	Weekly Test/ Amazing Race
3 rd week	Day 15	Day 16	Day 17	Day 18	Day 19	Day 20	Day 21
	Acquaintance,OT /Level Test	Regular Class/ Horse Riding C	Water Park 1	Regular Class	Regular Class/ Horse Riding D	Regular Class	Weekly Test/ Speech contest1
4 th week	Day 22	Day 23	Day 24	Day 25	Day 26	Day 27	Day 28
	Local School visit/ Outreach	Regular Class/ Horse Riding E	Suvic Yacht	Regular Class	Regular Class/ Shopping 2	Regular Class	Weekly Test/ Quiz Bee
5 th week	Day 29	Day 30	Day 31	Day 32	Day 33	Day 34	Day 35
	Regular Class	Regular Class/ Horse Riding F	Ocean Adventure	Regular Class	Regular Class/ Horse Riding G	Regular Class	Weekly Test/ Got Talent
7 th week	Day 36	Day 37	Day 38	Day 39	Day 40	Day 41	Day 42
	Regular Class	Regular Class/ Horse Riding H	Inflatable Island	Regular Class	Regular Class / Shopping 3	Final Test/ Fairwell Party	Graduation/ Depart 4/6weeks
8 th week	Day 43	Day 44	Day 45	Day 46	Day 47	Day 48	Day 49
	Regular Class	Regular Class	Sand Box	Regular Class	Regular Class	Regular Class	Weekly Test/ Speech contest
8 th week	Day 50	Day 51	Day 52	Day 53	Day 54	Day 55	Day 56
	Regular Class	Regular Class	Water Park	Regular Class	Regular Class/ Shopping 4	Final Test/ Fairwell Party	Graduation/ Depart weeks

Daily Schedule

TIME	ESL (Grade 3~6)	TOEFL/IELTS(Grade 7~10)
07:10 ~ 07:30	Roll Call, Exercise	Roll Call, Exercise
07:30 ~ 08:00	Breakfast / Preparation for Class	Breakfast / Preparation for Class
08:00 ~ 08:30	Reciting Vocabulary Program	Reciting Vocabulary Program
08:40 ~ 09:30	Regular Class 1:1	Speaking Class 1:1
09:40 ~ 10:30	Regular Class 1:4	Reading Class 1:4
10:40 ~ 11:30	Regular Class 1:4	Writing Class 1:4
11:40 ~ 12:30	Regular Class 1:8(Exciting Class)	Listening Class 1:8
12:30 ~ 13:30	Lunch	Lunch
13:30 ~ 14:20	Vocabulary/Regular Class 1:1	Vocabulary/Regular Class 1:1
14:30 ~ 15:20	Grammar Class 1:4	Grammar Class 1:4
15:30 ~ 16:20	Writing Program 1:4	Writing Program 1:4
16:20 ~ 17:30	Daily Activities	Daily Activities
17:30 ~ 18:00	Rest/Taking a shower	Rest/Taking a shower
18:00 ~ 18:40	Dinner	Dinner
18:40 ~ 19:30	Writing Diary/Regular Class 1:8(Exciting Class)	Writing Diary/Listening Class 1:8
19:40 ~ 20:30	Useful expressions	Useful expressions
20:30 ~ 20:50	Snack Time	Snack Time
21:00 ~ 21:40	Self-Study	Self-Study
21:40 ~ 22:00	Roll Call	Roll Call

OUTDOOR ACTIVITIES



SMEAG GLOBAL CAMP maintains the best management system for our valuable students.

Camp Feature

- 01** | Global CAMP with students from Vietnam, China, Taiwan, Korea and Russia
- 02** | Camp in SMEAG-managed international school (new dormitory for 320 students)
- 03** | TOEFL / IELTS (for middle and high school students)
- 04** | 24-hour contact management program
Student Assistant Teachers who live with students in a supervised camp where they check every detail concerning the students' needs and manage them from school to life including health status, camping life, and diary writing in English.
- 05** | Provide Humanity Class
Through group activities, children learn to cultivate the right personality and caring and communicating with others.
- 06** | Various Progress Activities
Aqua Planet, Ocean Adventure, Inflatable Island, Visit to Folk Village, Yachting, Horseback Riding, Volunteering, Shopping
- 07** | Outreach Program
Participatory volunteer activities, in which local children and performers play games and give donations prepared in Korea with personalized letters
- 08** | Parental safety system construction (SNS)
- 09** | Nutritious meals and snacks catering to the students' growth
- 10** | Executing separate male / female dormitory thoroughly
- 11** | Licensed nurses, security staff and drivers serve as Emergency Team during night time vulnerable hours
- 12** | Established medical system linked with Clark Medical City

INDOOR ACTIVITIES



SMEAG ACTIVITIES

P H I L I P P I N E S

Bohol Day Tour

The Bohol Day Tour takes you on a memorable and fun-filled trip to Bohol, a tourist attraction such as the world-renowned Chocolate Hills. Also meet the cute tarsiers, the world's smallest primates.



Oslob Day Tour

Experience swimming with the friendly giant whale shark! Whale shark is the largest fish in the world. They are completely safe for humans and often do not respond to people swimming near them. After whale shark watching, you will visit the magical waterfall named Tarsis Falls. Just like in the movie Avatar, multiple levels of waterfalls look like curtains of water from below.



Safari Tour

Cebu Safari and Adventure Park is located in the municipality of Carmen which is about a two-hour drive from Cebu City. You can either ride safari trucks to see zebras, wildebeests and other animals grazing in a savannah, or walk along fences where black swans, peacocks, and other birds feed. The park also has adventure activities such as zip coaster, giant swing, sky bike and many others.



Cebu City Tour

Cebu City features a great urbanistic environment that houses historical and modern edifices. Join Our Cebu City Tour and visit many of Cebu City's historical sites and cultural landmarks, such as Magellan's Cross, Basilica del St. Nino (Church & Museum), Casa Gorordo and Tops Hill.



SMEAG functions not only as an academy that provides comprehensive and extensive English language training to its students, but it also presents them opportunities to explore the beautiful tropical destinations and visit stunning architectural wonders that Philippines has to offer. Moreover, students are given the chance to participate in various community outreach programs and experience the warmth of the Filipino culture. These activities ensure that their study with SMEAG is worthwhile and is something that they will surely remember.

Olango Island Hopping

Jet across the Cebu Strait and explore the Olango channel, delighting in a refreshing swim and a leisurely lunch at the beautiful resort named Casa Blanca.



Nalusuan Island Hopping

Embark on a trip to the pristine waters of Nalusuan Island. The Nalusuan Island is a marine sanctuary to all the sea creatures and to the nature lovers, you can literally reach at arm's length the abundance of marine life.



Scuba Diving

The Philippines is packed with diverse and threatened species. It's one of the most astounding regions of biodiversity on Earth. The variety of marine life is still awe-inspiring scuba diving in the Philippines will blow your mind. If you are thinking of getting a scuba diving license, the Philippines is undoubtedly the best place to go!



Volunteer

You will have a richer and more meaningful experience in Cebu if you can find time to volunteer. Volunteering can help you reduce stress, find friends, connect with the community, learn new skills, and even advance your language skills.





ACADEMIC STAFF



MANAGERS

SMEAG Global Education has dedicated managers from diverse countries such as South Korea, Japan, China, Vietnam and Russia to help students. They do their best to assist students in their academic life and to successfully achieve their goals.

With long experiences and distinguished skills, R&D team at SMEAG Global Education is dedicated to developing not only outstanding teaching methods, curriculums and system but also programs that would improve the English skills of the students.



R & D



TEAM LEADER

Teachers at SMEAG Global Education are grouped into teams and each team has a team leader to manage their group. Along with the Academic Director and Supervisors, team leaders are responsible for the management and also the improvement of their members. Through strict recruitment process and simulated classes of its teachers before having classes, SMEAG teachers are trained to be the best instructors to provide the needs of our students.

Student Assistant Teacher (SA Teacher) is responsible for the management of the student's academic progress. Students can receive their academic schedule and counselling for their academic concerns through their assigned SA teachers.



SA TEACHERS



TEACHERS

After receiving regular training and educational seminars, SMEAG teachers are evaluated strictly and taught to provide wide knowledge to students as a mentor and a good friend whom students can share their feelings and concerns with.



Darling Tess Borgonia-Jayme

Academic Coordinator

It is my pleasure to welcome you to SMEAG Global Education Inc. Thank you for choosing our school to help you learn and become better in English.

Studying the English language is a challenge for most non-native speakers but it is necessary to keep pace with the course of globalization.

Here at SMEAG, we have the commitment to promoting English learning in a less difficult yet meaningful way for every student. We have great, energetic, and intelligent teachers who understand the needs of their students and share their own knowledge so that it can help them accelerate and be efficient in a world where English is not just a method of speech but a condition to survive.

We therefore dedicate ourselves to striving harder and continuing to deliver quality teaching methods for effective learning.

ADMINISTRATIVE STAFF



911 Team

The 911 team which is made up of a nurse, a security guard and a driver from evening until the early morning hours, is responsible for the safety and good health of the students



Nurse

A registered nurse is working in the main office at SMEAG Global Education to be responsible for checking the health conditions of the students and providing proper emergency measures.

Housekeeper

Housekeeping service at SMEAG is provided once a week at the requested time of students. Including room cleaning, various services such as the prevention of epidemics and sheet/quilt/pillowcase change are also offered.



Laundry Service

SMEAG provides students with laundry service every other day.



Security

All three campuses of SMEAG Global Education have a dedicated security personnel team that protects and guards the students 24 hours a day. Additional guards placed outside the campus walls and local police patrol the areas to ensure the safety of the students



Staffs

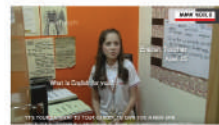
Admin staff are dedicated and responsible for a wide variety of administrative work such as SSP issuance, visa extension, administration, and SMEAG's own payment system (E-money card) and the Academic Staff are in charge of attendance, score and weekly test. Both staffs always try to give students a comfortable school life.



SMEAG IN MEDIA



NHK WORLD: SMEAG Special Feature



Opening Ceremony of IELTS Resource Center in Cebu



Study abroad in Philippines, Language Institutes in Cebu



SMEAG extends to the world for English education



Opening of SMEAG International School in Philippines and admission to English prestigious Universities



EPILOGUE

CEBU



Khuha Sansanee | Thailand



ผมเรียนอยู่ที่ SMEAG 6 เดือน ตอนแรกผมเรียน ESL ที่สเปิร์ตาแคมปัสเป็นเวลา 6 เดือนหลังจากนั้นผมเรียนไป 1 เดือนที่ศึกษาภาษาตามบ้านซึ่งจบออกมา แต่ผลสอบ IELTS ของผมคือ 2 เดือน และไปเรียน IELTS 5.5 ที่ 3 เดือน ที่สถาบัน SMEAG เพราะอาจารย์ใช้วิธีการสอนแบบที่ครูที่มหาวิทยาลัยสอน ผมสามารถเข้าใจและพูดเป็นภาษาอังกฤษได้เป็นอย่างดี ผมสามารถที่จะพูดเป็นภาษาอังกฤษได้เป็นอย่างดี ผมได้เรียนภาษาอังกฤษที่ SMEAG เพราะอาจารย์ใช้วิธีการสอนแบบที่ครูที่มหาวิทยาลัยสอน ผมสามารถที่จะพูดเป็นภาษาอังกฤษได้เป็นอย่างดี

I studied ESL in Sparta campus for 3 months and IELTS in Classic campus for 3 months also. I really love this kind of learning environment yet I am so ecstatic since I learned a lot from this school. I encountered many brilliant educators which made a difference in my life.



Ekaterina Aleksandrova | Russia



Здесь я встретила людей из разных стран и разных культур а также приобрела новых друзей. Благодаря опытным, открытым и добродушным преподавателям я получила опыт и знания в подготовке к экзамену IELTS а также, повысила свой уровень разговорного английского до "Fluent". Не смотря на загруженное расписание, у меня всегда были силы и желание не пропускать занятия и узнавать больше с каждым уроком.

I have met interesting people from different countries and got new friends as well. With the help of skillful and kind teachers I gained a lot of experience and knowledge in IELTS preparation. Regardless of the tight schedule I have never felt bored or tired. In contrast, I was really curious to know as much as possible during the lessons.



Junjie Cui | China



在这里我读的是"PRE IELTS"。每天有四节一对一课程以及四节团体课。团体课是一个认识外国同学的好机会，让你更自信的去跟同学沟通。专业的老师，也能适应多水平的教学。因为老师不懂中文，只能逼迫自己开口讲英文跟老师对话。老师们都很耐心的用你能懂的简单词汇不厌其烦的更换方式或者是给你举更多的例子让你掌握这个知识。学校的换课制度也能满足我的所有需求。

Here I studied "PRE IELTS". There are four one-to-one classes and four group classes every day. Group class is a good chance to meet foreign students, so that you can communicate with them more confidently. Professional teachers can also adapt to multi-level teaching. Because the teacher does not understand Chinese, I can only force myself to speak English to talk to the teacher. Teachers are very patient to use simple words and you can understand that they go out of their way to change or give you more examples to let you master this knowledge. The school system can meet all my needs.

TARLAC



Mingyu Kwon | Korea



저는 필리핀 말라에 위치한 SMEAG Global School Inc.에서 고 2,3 시절을 보냈고, 그시간은 제가 겪은 것 중 가장 기억에 남는 경험이었어요. 저는 이곳에서 학업 환경에 도움이 되어 여가생활 역시 할 수 있는 기회를 제공받았습니다. 또한 SMEAG School에서 생활하며 특히 커뮤니케이션 소절에 있어 많이 성장했고 실력을 향상시켰습니다. 따라서 저는 학교의 친목적인 도움으로 아이오와 주립대학에 입학했다고 자랑스럽게 말할 수 있습니다.

I have spent my Senior High School years in SMEAG Global School Inc. in Tarlac, Philippines and it was the most memorable experience I have had. I was provided with opportunities that will help me improve in my studies and not to forget the leisure time. SMEAG has offered me so much in my growth and improvement especially in my communication skills. So I am proud to say that I made it to Iowa State University because of their help.



Phạm Đức Minh | Vietnam



SMEAG là một trường quốc tế với sinh viên đến từ Việt Nam, Hàn Quốc và Philippines. Với rất nhiều chương trình giảng dạy, đây là nơi tốt nhất cho sinh viên muốn thích nghi với môi trường tiếng Anh và chuẩn bị vào đại học. Ngoài ra với một số lượng lớn giáo viên thực sự thân thiện và với kiến thức hữu ích cho sinh viên, họ luôn cố gắng hết sức để hỗ trợ sinh viên từ học tập đến cả nhân đôi sống. Họ đưa ra lời khuyên, chia sẻ câu chuyện... tất cả để giúp học sinh quên đi nỗi nhớ nhà. SMEAG là một nơi mà bạn nên đến để có thêm kinh nghiệm, nó sẽ là điều tốt nhất mà bạn có thể có trong cuộc sống của bạn.

SMEAG is an international school with the students from Viet Nam, Korea and Philippines. With a lot of curriculum, this is the best place for students who want to adapt English environment and prepare for university. Also with a huge number of teachers who are really friendly and helpful to student, they always try their best to assist the student from academic to personal life. They give advices, share story, all to help student forget their homesickness. SMEAG is a place that you should come and experience, it will be the best thing that you can have in your life.



GUO ZHI TING | Taiwan



"我沒有想過會有這麼好玩又充實的體驗"。在SMEAG營隊與台灣學英文情形不同，最令當讓我了解如何真正的使用英文。我們每天都有很多的活動還有課程，周末我們也準備演講，團隊比賽還有好聲音比賽。在這些活動中，除了有大眾說英文的機會，我也認識了很多不同國籍的好朋友。更重要的是，每一個老師都非常的認真教學，我從一開始不敢講話到可以參加團隊討論，我真的很喜歡營隊的所有老師。希望可以再參加一次！

"SMEAG Camp is beyond my imagination" There is obvious difference between SMEAG Camp and studying English in Taiwan. Camp program has offered various activities and classes, in the weekend, we need to prepare speech contest, group competition and "Good Voice", I learned how to use English here. Otherwise, I met friends who have different nationalities. The most impressive thing is, all of my teachers professionally taught me to become better in my English skill. At beginning, I could not talk, but gradually, as I attended by daily classes, I was able to join group discussion. I really admire all my camp teachers. I really want to join again!

Rules And Regulations | CEBU



General Provisions

1. Designation

The official name of the school is SMEAG GLOBAL EDUCATION 1st Campus shall be referred as SPARTA, 2nd Campus shall be referred as CLASSIC, 3rd Campus shall be referred as CAPITAL, International school shall be referred as SMEAG PRIVATE SCHOOL.

2. By Laws Agreement

Students must sign the agreement of academic and admin part before they start their course at SMEAG GLOBAL EDUCATION. By signing the agreement, the student agrees to observe all the rules and regulations.

3. Studying Lifestyle

Students can live freely as long as the student keeps the school regulations. Before coming here, students should have a travel insurance or international student insurance in order to maintain safety. SMEAG is not liable for damages due to non-existence of insurance.

4. Refunds after expulsion

No refund will be made in case of expulsion due to improper demeanor of students. Deposit will not be refunded in case of expulsion during the last week of enrollment and the deposit will be donated with student's name.

5. Responsibility

The school is no longer responsible of the student after their graduation or expulsion.

6. Registration and Extensions

6.1 There will be one time non-refundable \$100 registration fee

6.2 5 days (excluding legal holidays) after the application, an invoice will be presented. The tuition and dormitory fees must be paid in full, two weeks before the start of the enrollment

6.3 In case of extension, students must inform the administration office and apply at least 4 weeks in advance of their graduation date. Payment must be submitted 2 weeks prior to the first day of extension. Failure to pay their tuition fee 2 weeks in advance will result to automatic cancellation of their application.

6.4 After the registration and before the start of study, the departure date can be changed once only. Succeeding changes will have a service charge of \$100, but the dormitory or study period cannot be changed.

6.5 Tuition fee can not be forwarded and transferred.

6.6 Students are responsible for the additional costs of services below:

- Visa extension fee : Visa extension fee should be paid to Philippines Bureau of Immigration depending on the duration of stay in the Philippines. Students should pay the full amount in advance.
- SSP fee (Special Study Permit) : In order to get a certification to maintain student's legal status and to study in the Philippines.
- ACR I-CARD issuance fee : I-CARD is an identification card issued by the Philippines Bureau of Immigration to foreigners from other countries staying in the Philippines in order to strengthen the supervision of foreign tourists and prove the identity of foreign visitors.
- Course and Dormitory change fee : Extensions, changing courses or dormitory may incur additional charges in accordance with the provisions stated by SMEAG.
- Others : Travel, medical costs, telephone costs, electric & water bill and personal allowance are the sole responsibility of the student.

6.7 Students are required to write on the application any allergies, medical conditions or disability for the protection of the school and other students. In case of extreme medical conditions, SMEAG reserves the right to refuse the application.

7. REFUND POLICY

7.1 Pre-departure

- Students may receive a full refund if they cancel at least 2 weeks prior to their scheduled departure date. However, the registration fee will not be refundable.
- 2 weeks - 4 days prior to the scheduled departure : Students who cancel their registration will be refunded for 2 weeks of room and boarding fee.
- 3 days prior to the scheduled departure : Students who cancel their registration will be refunded for 1 week of tuition fee and 4 weeks of dormitory.

	Registration	Dormitory fee	Tuition fee
Cancellation before 14 days	No refund	100% refund	100% refund
Cancellation before 4 days to 14 days	No refund	100% refund except for the last 2 weeks	100% refund
Cancellation before 3 days	No refund	100% refund except for the last 4 weeks	100% refund except 1 week

7.2 After departure

- If students want to cancel upon arriving at SMEAG, all amount will be refunded except 2 weeks of tuition fee and 8 weeks of dormitory fee.
- After starting the study period, refund is available in a 4 week basis and 60% will be refundable.
- All refund amounts will be processed within 30 days and given by SMEAG
- If students are absent for 3 weeks from opening date, without advance notice, no refund will be given.
- If students arrive later than the opening date or absent from classes, no refund and make-up class will be given.

Cancellation request period	Tuition refund	Dormitory refund	Remarks
Within 50% of scheduled stay	60% of refund in 4 week basis	60% of refund in 4 week basis	In case of inevitable circumstances [ex. Student's illness, immediate family members death, etc.] SMEAG will refund 50% of the student's tuition cost regardless of the notice date [Medical certificate will be required]
After 50% of scheduled stay	No refund	No refund	

If in case when students enroll more than 12 weeks for a guarantee course, they can get 60% of the refund for the exceeding period of their enrollment after they take an official exam.

8. Holding Period Policy

- Holding will be available if there are more than 4 weeks remaining in the enrollment period.
- SMEAG will deduct 2 weeks (tuition and board) from the total duration and students can restart within 6 months.
- VISA extension fee and SSP issuance fee will not be refunded. In case the students need a VISA extension or SSP issuance (valid for 6 months), it is the student's responsibility to reapply.
- Dormitory choice will be subject to availability.
- Pick-up service will not be available.

9. Disclaimer Policy

- SMEAG or its agents shall not be liable for cancelled or delayed flight schedules due to a natural disaster.
- SMEAG is not liable for any accidents outside of its premises without the permission of SMEAG.
- SMEAG is not liable for damage of property or life during travel, going out or stay-out.
- Classes are held 5 days a week. However, SMEAG will not compensate for Philippines holidays, temporary holidays and special holidays.
- SMEAG has the authority to change its prices to adhere to the 10% (6 months) exchange rate and tax increase in accordance with the relevant laws of the Philippines government. If necessary, SMEAG can change the opening date or course curriculum & program for better quality of study.
- SMEAG has the right to expel students who break the rules and regulations of the school. Students who have absences without permission, commit acts of violence, bad attitude will be on grounds for expulsion to maintain a positive academic atmosphere.
- If students lead a meeting or gather a group for bad purposes and would cause SMEAG for damages, SMEAG has the right to expel those students without any warning and ask for a compensation.

9.8 When students are expelled, SMEAG can relay the result to their parents and agents.

Academic Policy

1. Class Attendance and Class Changing

- SMEAG has the sole discretion to arrange students' class and teachers. Students can't make objections without reasonable cause.
- Students must be in their classrooms within 5 minutes after the bell, otherwise they will be marked as absent.
- In order to maintain professionalism in the classroom, we ask students to refrain from wearing short skirts or shorts and/or flip flops.
- Students are allowed to change classes once in every 2 weeks. If students want to change the class, he/she must fill out a change of class form with Students Assistant (SA) teachers on Thursday until 6PM. Priority for teachers will be decided in consideration of attendance, warnings and study duration. Students can start their reassigned schedule the following week on Monday.
- If there is a problem with a class due to a labor strike, unexpected circumstances or absences/ early dismissal/ tardiness of teachers, a substitute teacher will be provided.
- It is only possible for students to be absent due to sickness, changing of flight, receipt of postal package with manager's permission in advance. The students will be required to submit an objective data, such as doctor's certificate or postal receipt.
- There will be a charge of 500 pesos for course changing after students start their course in the school, and when it is not scheduled registration in advance.

2. Sparta Class and Weekly Mock Test Attendance

- All students who arrive at SMEAG must be in accordance with the provisions of each campus and attend morning and evening Sparta classes.
- If a student's attendance ratio is below 90% during the whole study period
 - 1st Center SPARTA Campus : Mandatory attendance during the whole study period.
 - 2nd Center CLASSIC & 3rd Center CAPITAL Campus : Mandatory attendance during the first 4 weeks.
- Sparta class will start from the evening on the 2nd day.
- All SMEAG students must take a weekly test (PROGRESS TEST, CAMBRIDGE, IELTS, TOEIC, TOEFL) in accordance with the regulations of each campus.
- Students who fail to take a weekly test are subject for a warning based on SMEAG academic regulations.

3. SMEAG Graduate Certificate

A graduate certificate will be given to students in their last week who have attended more than 80% classes. If the attendance ratio is below 80%, a graduate certificate will not be issued.

Admin Regulations

1. Dormitory Regulations

- Dormitory room assignment is a unique privilege of SMEAG. All students must stay in the assigned room unless there is an acceptable valid reason for change.
- Students who wish to change their rooms due to personal reasons will be charged 500 pesos. (For chance of campuses, 500 pesos will be charged from the 2nd attempt to change)
- All students must reside in dormitory upon arrival at SMEAG and sign the dormitory agreement form. Failure to abide by the rules and regulations of the dormitory agreement may result in expulsion.
- Personal toiletries will not be provided by SMEAG and is the responsibility of the student.
- If an SMEAG employee has been accused of theft, SMEAG will not be held liable until after a thorough investigation by authorities have been made.
- All furniture is the sold property of SMEAG. Students who damage any property or remove them from the school will be held responsible for full reimbursement.
- Cooking and eating food are prohibited in dormitory room and public space in order to prevent fire problem, or harmful insect and these behaviors can result to a warning and expulsion. Student can eat in the dining area or canteen only

2. Deposit Regulations

- Upon arrival at SMEAG, an initial 2,500 pesos of room deposit must be made in order to protect the property of the school and 100% amount is refundable if there is no problem.
- P300 key deposit must be made upon arrival, since we have to change the door lock when student loses a room key. If students don't lose the key, 100% of the amount is refundable.
- P200 of E-Money Card deposit must be made upon arrival. E-Money Card deposit will be refundable if students return the key.
- Students are responsible for paying water and electric bill at the end of every month. Electric bill will be made by members of the room depending on usage amount. Water bill will be charged 10 pesos per day. Students can check the electric meter when they are assigned in a room.

3. Curfew and Visit Regulations

- All students must strictly adhere to the curfew regulations.
 - 1st Center, SPARTA Campus : Exiting the campus ground is strictly prohibited during weekdays. On Saturdays or holidays, students are allowed to go out and must return by 10PM. On Sundays or holidays (day before the class), students must return to campus by 9PM to attend the evening Sparta classes.
 - 2nd Center, CLASSIC Campus : weekday curfew time is 9PM to 5AM and weekend & holiday curfew time is 11PM to 5AM.
 - 3rd Center, CAPITAL Campus : Curfew time is 11PM to 5AM regardless of weekday or weekend.
 - Students who wish to go out or stay-out with acceptable reason will be approved by managers with permission (In case of SPARTA Campus)
- Students are strictly prohibited from entering the opposite gender's room. This will cause immediate expulsion from the school if they cross the red line.
- Outside visitors are strictly checked by SMEAG security guards. Even though they get a permit to enter from SMEAG, they are not allowed to enter the dormitory.

4. Alcoholic Drinking & Smoking Prohibitions

- Bringing liquor/alcoholic beverages inside the campus is strictly prohibited. Violent behavior, vandalism, disturbance of peace or fights after drinking will result to warning or expulsion according to the regulations of SMEAG.
- In order to keep a pleasant dormitory environment and prevent the risk of fire, smoking is only permitted in designated areas. If a student is caught smoking in the room or throwing away the cigarette butts, it will result to a warning and they will be charged 1,000 pesos as penalty.

5. Cleaning & Laundry

- Housekeeping service will be provided once a week and beddings will be changed when the room is being cleaned. If there is a prager reason, students may ask the office for a change of beddings.
- Laundry service will be provided every two days. Laundry drop off and pick up is available in a designated area and time. If there are delicate or expensive clothes, laundry can be rejected and SMEAG is not responsible for any color damage or alterations. Any lost or damaged items will be reasonably compensated.

6. Warning, Penalties and Grounds of Expulsion

- Students will be expelled without a warning if they enter the opposite gender's room, or is caught drinking in rooms, or damage the pride of SMEAG with any improper reasons.
- Students will receive warnings and be on grounds of expulsion if their attendance rate is less than 50%, cause managers. All final decisions will be made by SMEAG.
- excessive noise inside the campus, or commit violent acts towards each other threatens
- Receiving 5 warnings will result in expulsion.

Dormitory Rules and Regulations | TARLAC



Dormitory Rules and Regulations

- To become a healthy citizen, contribute to society, love to each other and be cooperative.
- To create an atmosphere that can be dedicated to promoting education and providing a foundation for self-realization.
- To build an upright personality through dormitory life by learning to care for each other and be considerate of the feelings of others.

(4 pride of SMEAG International Students)

- One. We have grand possibilities.
- One. We have faith in certain victory.
- One. We have a compassionate warm heart.
- One. We have a true sense of caring and respect for each other.

* SMEAG Global School enforces the following dormitory rules and regulations for every student to abide by.

1. Basic Dormitory Guidelines.

The dormitory is a place for students to improve and form a good moral character, thus, the following regulations must be followed to maintain peace and order to create the best learning environment;

- 1-1 Every student in the dormitory should be proud of being in SMEAG Global School and do his or her best to improve both academic ability and good moral character.
- 1-2 Every student is required to fulfill his or her roles as a student and does not ask for any exceptions.
- 1-3 Every student should cultivate cultural awareness of citizens by keeping order lines and do his or her best not to cause other students any inconvenience.
- 1-4 Every student must not damage the facilities of dormitory and use them with good care.
- 1-5 Every student must understand and comply with the dormitory rules and regulations and also follow the instructions of a dormitory manager.
- 1-6 Every student should respect each other and greets with smile and also has to be polite to the dormitory employees.
- 1-7 Every student must show a warm spirit of comradeship and teamwork by thinking of 'we' first rather than 'I' and be the first one when others are in need of help.
- 1-8 Every student is expected to use positive language and be polite and kind to school employees, parents, visitors and classmates.
- 1-9 All the facilities and equipment of the dormitory belong to the school property, thus, if a student ever happens to destroy any of those, he or she will be asked to compensate for its loss.
- 1-10 Any gathering or entertainment without permission is not allowed. Smart phones, netbooks, cartoons, pornographic photos and fantasy novels which have possibilities of hindering the learning environment cannot be carried and disseminated inside the dormitory.
- 1-11 It is not allowed to cook in any place in the dormitory.
- 1-12 In order for every student to have sound sleep and heighten the efficiency of learning, things which can disrupt others must be avoided such as having a chat, walking around, doing the laundry and taking a shower after 22:00.
- 1-13 Running and heavy walking are not allowed in the dormitory.
- 1-14 It is not allowed to walk around the dormitory wearing underwear.
- 1-15 Every student must wear complete school uniform while in classes and also be in neat clothes while sleeping.
- 1-16 Room arrangement will be planned by a manager every semester.
- 1-17 Every student is not allowed to use his or her mobile phone during the week. The phones will be given to students every Friday at 22:00 and be surrendered again every Sunday at 22:00. If this rules is not kept, a student will be imposed with penalty points and will be grounded on the weekend. (In case of a holiday, the phone will be given the day before at 22:00)
- 1-18 It is absolutely banned to drink and smoke inside the campus.

2. Personal hygiene and healthcare

- 2-1 Every student is anticipated to take a shower everyday and maintain neat hair in order not to cause other people unpleasant feelings.
- 2-2 The bedding should be washed and changed regularly to observe cleanliness.
- 2-3 Be punctual with meal times and do not skip meals.
- 2-4 In case of emergency, report it to a school staff immediately.
- 2-5 To stay physically fit, every student is expected to live a well-regulated life and exercise.
- 2-6 Every student should get enough sleep in order not to harm his or her health.

3. Living in a dormitory room

- 3-1 The first priority of a room is to take a rest and sleep; therefore any act of disturbance such as parties is prohibited.
- 3-2 All the facilities in the room like cabinets, beds, and trashcans should not be damaged in any case.
- 3-3 Every student should always check the facilities such as air conditioner and furniture. If anything damaged is found, report it to the school maintenance for fixing.
- 3-4 It is not desirable to throw any garbage out of the window. (Do not try to force the mosquito net to open the window)
- 3-5 It is banned to bring any food (noodles, pizza, fast food and cake) inside the room to maintain cleanliness of the room. (Food must be kept in a container at a designated area)
- 3-6 The cabinet has to be locked all the time. If a student needs to keep his or her money or valuables with a manager, he or she might ask for it.
- 3-7 The lights in the room should be switched off at 23:00 to sleep
- 3-8 The air conditioner and the lights should be turned off when going out. (If not, penalty points will be given)
- 3-9 No visitors (classmates or friends) are allowed to be in the rooms.
- 3-10 Every student is required to buy his or her own toiletries and never to other's.

4. Using the student lounge

- 4-1 Take good care of the facilities (microphones, remote controls and speakers) in the lounge and never destroy them.
- 4-2 Every student should strictly follow the time schedule of the operating hours.
- 4-3 When going out of the lounge, the lights, air conditioner and electronic equipment must be turned off.
- 4-4 It is banned to bring any food inside the lounge.
- 4-5 Every student must keep an eye on his or her valuables. (Management will not be liable for any losses)

5. Laundry guide

- 5-1 The laundry should be put in a personal basket and placed in front of the room in accordance with the laundry time schedule (before going to school).
- 5-2 Every student should put a name tag on his or her personal clothes in order not to be mixed with others.

6. Sleeping out and going out

- 6-1 It is strictly restricted to sleep out and go out in order to build up good learning environment and maintain an orderly community life.
- 6-2 It is only allowed to go out on the weekend and holiday in accordance with the shuttle schedule.
 - * Going out is impossible if a student cannot follow the shuttle schedule. If a student ever happens to be late for the schedule, he or she will be given penalty points.
- 6-3 It is not allowed to wear slippers when going out, every student must wear a pair of shoes and be in neat outfit.

7. Roll call

There are "Morning Roll Call", "Night Roll Call" and "Special Roll Call".

- 7-1 The morning roll call starts at 6:40. If a student is late or skips it, the penalty points will be given and the student will be grounded.
- 7-2 The night roll call starts at 22:00.
- 7-3 When attending the roll calls, every student should wear training suit.
- 7-4 The special roll call can be carried out anytime upon the decision of a dormitory manager.

8. Preparation for entering a school dormitory

- 8-1 Beddings are provided.
- 8-2 Clothes: Every student should have at least 4 pairs of clothing.
- 8-3 Personal toiletries: Shampoo, soap, tooth brush, tooth paste, towel, lotion, cup and toilet paper
 - * Additional purchase could be done in both Korean and local groceries nearby SMEAG Global School.
- 8-4 Learning materials: if needed, prepare personal storing device like a USB.
- 8-5 Cash or debit card: any card which has VISA mark is possible.
- 8-6 A pair of house shoes/slippers which causes little sound when walking)
- 8-7 Personal laundry baskets are provided.
- 8-8 Using electronic devices for learning and mobile phones (on a day-off only) is possible but be cautious with the risk of loss.
- 8-9 Prohibited items
 - ① Electronic item such as fans, irons, electric blankets, lamp, lantern and iron products or inflammables like heaters, matches and lighters.
 - ② Cartoons and unsound books etc, which are not related to learning.
 - ③ Big things which have to be put on the floor and can infringe the lives of others (bookshelves, clothes box and table etc.)
 - ④ Any kind of gambling cards (HwatoockTM) and deadly weapons
 - ⑤ Awls or a screw drivers which can destroy the texture of ceiling

9. Disciplinary Regulations

A. Reward

division	contents
2 points	Can be given by managers.
1 point	Can be given by SA teachers (Giving more than 5 points is impossible within a week)

B. Punishment

division	contents
-1 point	① Being accused of an assault of school violence and needing to be isolated from a victim. ② Drinking, smoking and taking hallucinogens or similar drugs. ③ Committing sin against the status of students accordingly damaging the reputation of the school.

Disciplinary Committee referral (Dismissal)

- ④ When defying teachers and school staff with insulting words and not listening to their instructions.
- ⑤ Deliberately damaging the facilities of dormitory.
- ⑥ Extorting other's money and valuables.
- ⑦ Causing a fire because of carelessness.
- ⑧ Being involved in sexual abuse

- ① Being involved in scandalous affair and damaging dignity as a student.
- ② Trespassing on the dormitory of opposite sex.
- ③ Inciting other students and instigating a rebellion against school operation policy
- ④ Not attending classes but staying at a room or entering the dormitory without permission during school hours.

- ① Skipping classes or leaving early without permission and causing disorder (including night and special classes)
- ② Not attending the roll calls.
- ③ Watching illegal cartoons, games, video clips using electronic devices.
- ④ Bringing in adult comics and fictions.
- ⑤ Making noise in the dormitory.
- ⑥ Inviting strangers to the dormitory.

- ① Sleeping in the other rooms.
- ② When violating the curfew time.
- ③ Bringing in fast food like noodles, fried chicken, hamburgers (Only beverage can be kept in the refrigerator of room)
- ④ Being late for the roll calls.
- ⑤ When making a mess.
- ⑥ Turning on the lights or making noise after 23:00. (every student in the room will take responsibility)
- ⑦ When the room is untidy and dirty (every student in the room will take responsibilities)
- ⑧ Wearing slippers outside the dormitory
- ⑨ When not following the instructions of managers and teachers.

- ① Sleeping in the other rooms.
- ② When violating the curfew time.
- ③ Bringing in fast food like noodles, fried chicken, hamburgers (Only beverage can be kept in the refrigerator of room)
- ④ Being late for the roll calls.
- ⑤ When making a mess.
- ⑥ Turning on the lights or making noise after 23:00. (every student in the room will take responsibility)
- ⑦ When the room is untidy and dirty (every student in the room will take responsibilities)
- ⑧ Wearing slippers outside the dormitory
- ⑨ When not following the instructions of managers and teachers.

- ① Sleeping in the other rooms.
- ② When violating the curfew time.
- ③ Bringing in fast food like noodles, fried chicken, hamburgers (Only beverage can be kept in the refrigerator of room)
- ④ Being late for the roll calls.
- ⑤ When making a mess.
- ⑥ Turning on the lights or making noise after 23:00. (every student in the room will take responsibility)
- ⑦ When the room is untidy and dirty (every student in the room will take responsibilities)
- ⑧ Wearing slippers outside the dormitory
- ⑨ When not following the instructions of managers and teachers.

* The following can be changed upon agreement with managers.

(Punishment timetable according to the penalty points)

-points	-5	-10	-15
punishment	Not allowing to use the mobile phone	Grounded on the weekend and no mobile phone	Disciplinary Committee referral

* Disciplinary Committee consists of 2 managers and 2 SA teachers.

11. Others

- * Dress neatly when going to school.
- * Be on time with school time schedule.
- * When there are issues regarding facilities or other concerns, report it to the managers.
- * Try your best to conserve energy such as electricity and water.

The following are additional rules aside from the dormitory rules and regulations

Every student must obey these rules to make our school better and create a pleasant living environment.

1. Observe silence inside the dormitory

- ① Don't make any noise when walking, cautiously open and close the door, speak softly, and don't run.
- ② Walking on the hallway and visiting others are banned after 11 p.m.

2. Be polite to everyone around you and greeting others with a smile.

3. Cleanliness and tidiness

- ① Open the window and air out right after waking up / making the bed / cleaning the room / empty trashcans
- ② Do not throw any garbage
- ③ Use the water dispenser properly (do not spill the water on the floor and wash your cups)

4. Saving energy

- ① Turn off the lights, air conditioner and water when going out of the room.
- ② Eat food as much as you can during the meal time.
- ③ Don't put any recyclable things in the trashcan (Separate them and recycle)

5. Personal hygiene

- ① Bedding: Change blanket and linen once a week. Atopic dermatitis patients should change the bedding more frequently.
- ② Keep your body clean: whenever entering your room, wash your hands with soap. (Keep in mind that the infectious disease like infection can harm others)



Busan Branch

302, Myeong-sun Heights building, 29-2, Myeongjang-dong, Dongrae-gu, Busan, Korea
TEL. 070-8628-8677 FAX. 051-711-7322

SMEAG Campus Capital (Language Institute)

Emillio Osmena cor., Bataan St., Guadalupe, Cebu City 6000, Philippines
(TEL. 82-70-8637-8688 / 63-32-520-9208)

SMEAG Campus Global School (Language Institute)

Sitio Macapul Barangay San Roque Bamban, Tarlac, Philippines
(TEL. 82-70-4012-7601)

www.smeag.com

The date of publication: October 2022

Copyright © 2018 **SMEAG GLOBAL EDUCATION**

