



**PHILINTER
ACADEMY**

**20
24**

**INTEGRATED
BROCHURE**

Index

CEO Message	02
Vission, Mission, Philosophy	03
Our History	04
Philinter Features	05
Sparta Courses	07
Semi-Sparta Courses	13
Junior and Primary Courses	21
TOEFL Course	25
Special Courses	27
Facilities	33
Accomodation	34
Philinter Activities	37

CEO Message

WELCOME TO PHILINTER ACADEMY!

At Philinter Academy, we believe that English language proficiency goes beyond grammar and vocabulary. It has the power to unlock endless opportunities and broaden horizons. Despite the challenges of the global situation, our focus remains on providing an engaging curriculum and exceptional instructors. These educators play a vital role in creating an impactful learning environment, and we spare no effort in recruiting highly skilled individuals who deliver enriching educational experiences.

We take pride in our recent program overhaul, aimed at enhancing language proficiency and achievements. Our IELTS 8-week guarantee course has achieved a remarkable 100% success rate, while the integration of the CALLAN METHOD has boosted speaking abilities. Collaboration of the Business Course and TOEIC, as well as tailored evening programs, exemplify our commitment to excellence.

In addition to our comprehensive offerings, we provide courses that are often scarce elsewhere as these are difficult to teach, including TOEFL and Cambridge courses. At Philinter Academy, you can expect a holistic learning experience that surpasses the ordinary.

As CEO, I assure you of our unwavering commitment to academic quality. We continuously upgrade our programs, facilities, and services to exceed everyone's needs.

Thank you for choosing Philinter Academy as your trusted destination for English education.




CHOI IN
CEO

Our Core Values

VISION

The premier education service provider renowned for English in the Philippines and beyond.

MISSION

To be the ultimate ESL Academy, defining study abroad and creating a future, now and forever.

PHILOSOPHY

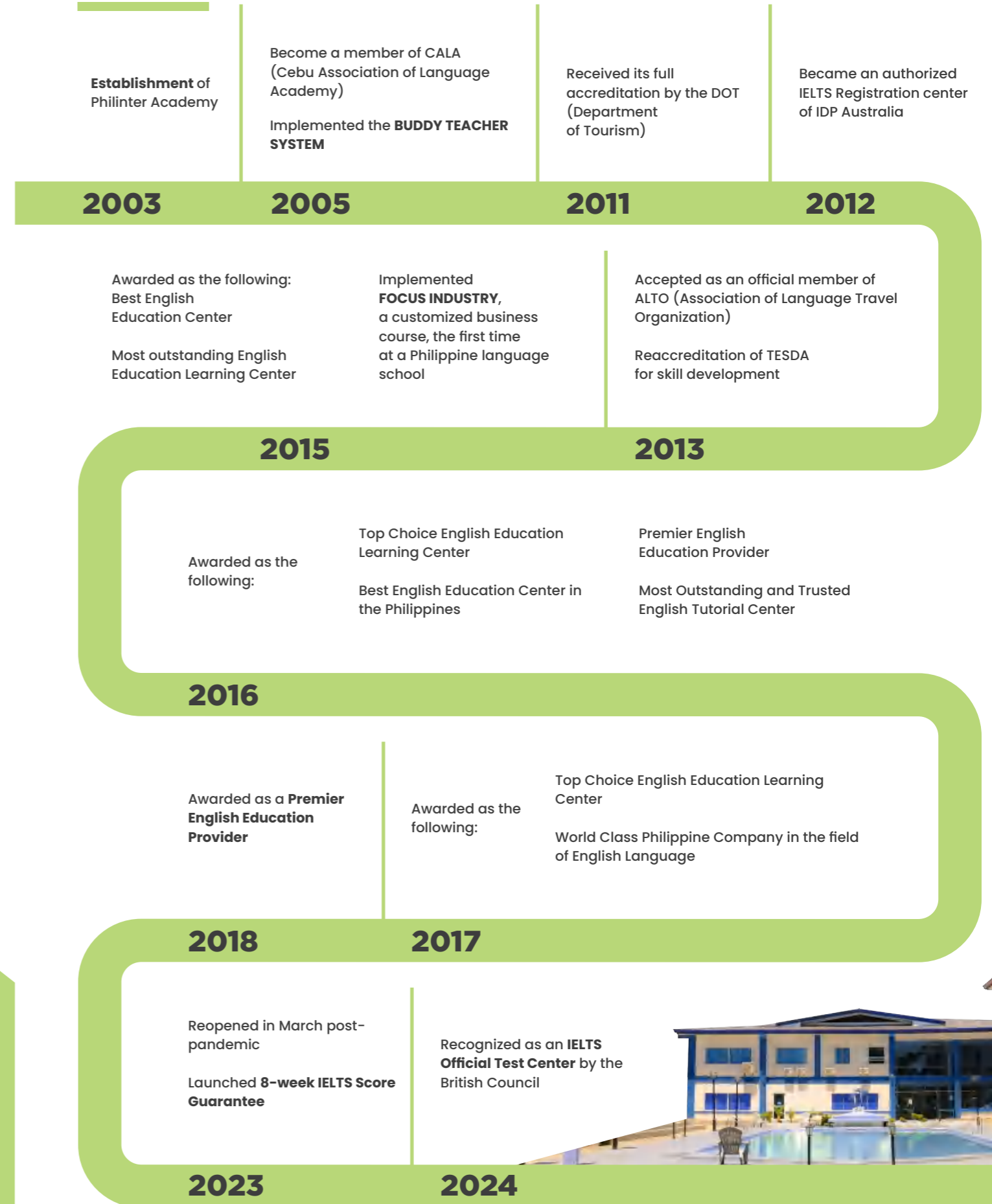
COMMITMENT
We keep our promises.

EXECUTION
We practice and act.

RESPECT
We value you.

GROWTH
We thrive.

Our History



What makes us different?

PHILINTER FEATURES



Result-Oriented

ACQUIRE LEVELS/SCORES THAT EXCEED EXPECTATIONS

Improve your English skills quickly and effectively at Philinter. Our proven approach can help you achieve IELTS scores ranging from 5.5 to 6.5 in just eight weeks.

PREVIEW CURRICULUM

Our curriculum is designed to help you prepare in advance for each class. This way, you get a chance to approach the study materials from a different perspective and make the most out of your learning experience.

EFFECTIVE STUDY ATMOSPHERE

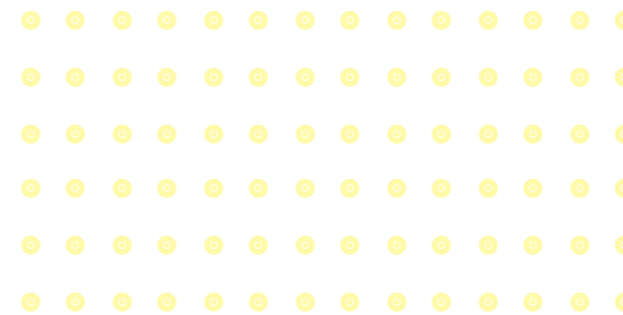
We offer customized programs and assessments, tailored academic support, assignments, counseling, testing, evaluation, and evening programs to create an optimal study environment for each student.

IELTS 8-Week Plan with 8.0 Teachers

Philinter Academy helps you achieve an IELTS score that exceeds your expectations in the shortest possible time with EXPERIENCED TEACHERS and EFFECTIVE PROGRAMS.

Our IELTS 8-week plan is a standard feature in all IELTS Programs at Philinter Academy.

Classes are taught by highly-trained teachers who achieved an IELTS band score of 8.0 to 9.0.



Customized Practical Business

We are the first in the industry to implement practical business English that can be used immediately in fields like engineering, medicine, and education.

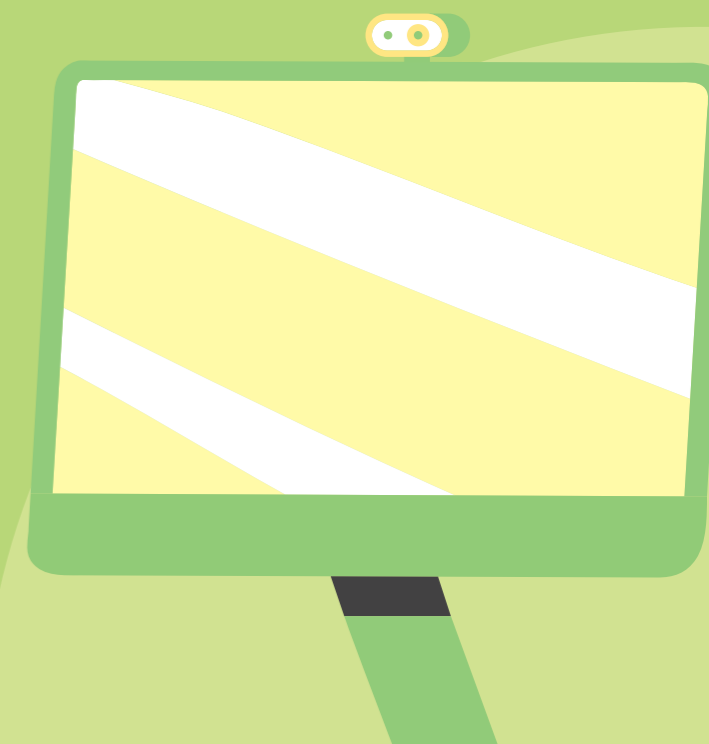
Learn everything from typical business speaking to conferences, meetings, document works required for practical work, and interviews for employment.

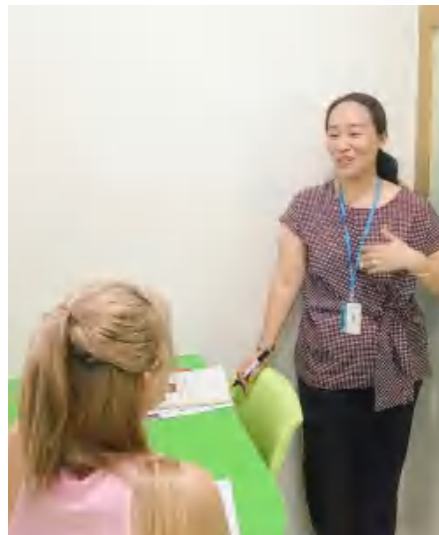
MOOCS; Micro-Degrees

A MOOC is a program providing access to video lectures from renowned global universities, allowing participants to earn a micro degree.

Our MOOC classes cover specialized fields like management, marketing, tourism, medicine, and architecture, with options tailored for varying English proficiency levels.

An optional but highly recommended class for those enrolled in Light ESL, General ESL, Advanced Business, or Focus Industry courses to maximize learning while studying abroad.





Intensive ESL
 IELTS Intensive
 IELTS Guarantee (8-12 Weeks)
 TOEIC Guarantee (12 Weeks)

Sparta Courses



INTENSIVE ESL

This program is designed for students seeking a comprehensive, accelerated mastery of the English language, with a strong focus on Spoken Production. Classes will be tailored to each student's needs through personalized consultations and delivered using a challenging, non-traditional approach.

FEATURES

- 9-hour Daily Intensive Program: Quickly improves students' English level in a short period through one-on-one and small group classes.
- This course operates in a SPARTAN SYSTEM with strict standards for attendance, test attendance, and class attitude.
- Five hours of one-on-one classes are provided each day, which are especially helpful for improving students' speaking skills.
- Strict monitoring and teacher consultation are provided to consistently evaluate students' class performance with immediate feedback.
- Evening Program: Special lectures, consultations, and self-study are available during the 2-hour review period from Monday to Thursday, 19:00-21:00.

DURATION

- 1 - 24 weeks
- If you plan to study business or take test preparation courses like IELTS or TOEIC in the future, we recommend studying this Intensive ESL course for about 8 to 12 weeks.

ADMISSION QUALIFICATION

- There are no restrictions or qualifications required to enroll in this course.
- However, if your level of English is very low/zero, you will be assigned to one-on-one classes instead of group classes. (2 hours of small group classes are equivalent to 1 hour of one-on-one class).

ADMISSION DATE

Every Sunday
 (Please inquire in advance for Saturday Admission)

CURRICULUM

CLASS TYPE	NUMBER OF CLASSES	SUBJECT / CONTENT
1-on-1	5	Speaking and Listening, Reading and Vocabulary, Word Smart, Grammar for Writing, Grammar for Speaking, Pronunciation Clinic
Small Group	2	Daily News, Start Talking, Basic Accent Training, Grammar 101, Grammar 201, Grammar 301, Dialogue Patterns, Phrasal Verb and Collocations, TED Talk, Accent and Intonation, Compelling Conversations, Debate Excellence, Job Interview, Contemporary Topics, Mastering Idioms
Evening Program	2	Review 2 hours from 7 pm-9 pm.
Total	9	



STUDENT REVIEW

Daiki



Japanese

My English skills are also getting better. When I first went somewhere with my friends, I could only say yes, ok, and good, but now I can express my own opinions.

IELTS INTENSIVE

This course emphasizes both practical test-taking strategies and essential English language skills, ensuring students are fully prepared for the exam and equipped to communicate effectively in real-world situations, leading to improved IELTS scores.

FEATURES

- Get your IELTS score quickly! You can improve your score by 0.5 to 1.0 per 4 weeks of studying.
- On average, students can achieve an IELTS score of 6.5 from 5.5 after 8 weeks at Philinter Academy
- Achieve a score of 5.5 from IELTS 4.0, and even score 7.0 out of 6.5.
- Daily 10-hour program: 8 hours of class + 2 hours of IELTS MISSION
- Test-taking skills: Proven and tested skills taught, based on strategies used by high-band achievers
- Progress monitoring: Strict and continuous monitoring of student progress using a specific framework
- Feedback: Regular feedback is provided to students to help them improve.
- British Council IELTS Certified Test Center: A place where you can take the official test on campus.
- Latest available classroom and mock test materials used: Updated textbooks in 2024.

DURATION

- 1 – 24 weeks
- The optimal study period for IELTS preparation can vary depending on your current English language skills and the score you are aiming to achieve. However, a general recommendation is to spend at least 8-12

ADMISSION QUALIFICATION

AGE	PHILINTER LEVEL	IELTS	TOEIC
15 +	Upper Elementary (201+)	3.0 above	400 above

ADMISSION DATE

Every Sunday
(Please inquire in advance for Saturday Admission)

CURRICULUM

CLASS TYPE	NUMBER OF CLASSES	SUBJECT / CONTENT
1-on-1	4	IELTS Speaking and Pronunciation, IELTS Listening, IELTS Reading, IELTS Writing 1, IELTS Writing 2
Small Group	4	IELTS Common Mistake, IELTS Vocabulary, IELTS Grammar, IELTS Test Review, IELTS Pronunciation
Evening Program	2	IELTS MISSION 2 hours from 7 pm – 9 pm
Total	10	



STUDENT REVIEW

Endy



Vietnamese

I have improved a lot in my listening and speaking skills. Before that, I was not confident communicating with people as an introvert, but when studying here, everyone exposed me and gradually helped me. As a result, I have improved dramatically on my shortcomings and am confident in communicating with others.

IELTS GUARANTEE (8-12 WEEKS)

Discover excellence in IELTS preparation at Philinter Academy, an authorized test center certified by the British Council. We're proud to have the best IELTS teachers, crucial for your success. This unique program gives students exclusive access to rare IELTS teachers with an impressive 8.0 band score, elevating your IELTS preparation experience at Philinter.

FEATURES

- IELTS 5.5 TO 6.5 IS ACHIEVABLE IN 8 WEEKS. Philinter Academy has the highest IELTS acquisition speed among all the language schools in the Philippines.
- Daily 10-hour program: 8 hours of class + 2 hours of IELTS MISSION
- Test-taking skills: Proven and tested skills taught, based on strategies used by high-band achievers
- Progress monitoring: Strict and continuous monitoring of student progress using a specific framework
- Feedback: Regular feedback is provided to students to help them improve.
- British Council IELTS Certified Test Center: A place where you can take the official test on campus.
- The school covers the full cost of the exam for one time only.
- Latest available classroom and mock test materials used: Updated textbooks in 2024.

ADMISSION DATE

Only designated date admission is possible. Inquiries are required before registration.

DURATION

- 8 – 12 weeks
- Score guaranteed courses have a designated entrance date. Please be sure to contact us.

ADMISSION QUALIFICATION

SCORE GUARANTEE	ENTRY LEVEL	AGE
IELTS 7.0	IELTS 6.5	15+
IELTS 6.5	IELTS 5.5	15+
IELTS 5.5	IELTS 4.0	15+

CURRICULUM

CLASS TYPE	NUMBER OF CLASSES	SUBJECT / CONTENT
1-on-1	4	IELTS Speaking and Pronunciation, IELTS Listening, IELTS Reading, IELTS Writing 1, IELTS Writing 2
Small Group	4	IELTS Common Mistake, IELTS Vocabulary, IELTS Grammar, IELTS Test Review, IELTS Pronunciation
Evening Program	2	IELTS MISSION 2 hours from 7 pm-9 pm.
Total	10	



STUDENT REVIEW

Mari



Vietnamese

On the first day of arriving at Philinter, my ability to communicate in English was very poor, and I felt shy in communicating for fear of pronouncing it wrong. But with the help of the teachers, my English-speaking ability is much better, and I can communicate comfortably. Besides, my writing and reading skills are also better.

TOEIC GUARANTEE (12 weeks)

TOEIC Guarantee course helps you improve your score significantly in just 12 weeks, and most graduates of this course exceed their expectations. Our teachers operate as a 'TOEIC-BUSINESS FACULTY', so you can improve your business or practical English-speaking skills as well.

FEATURES

- With this 12-week intensive program, you can obtain a TOEIC score that exceeds your expectations!
- Score improvement of approximately 300 or more in 12 weeks. An average of 100 to 150 points improved per 4 weeks.
- The school provides sufficient support for you in taking the TOEIC official test: All official test fees are paid by the school. Additionally, before the final exam in the 10th week, you can take the official exam in the 6th week for adaptation.

- Expect improvement not only in TOEIC but also in speaking skills.
- You can improve your business or practical English-speaking skills with our experienced TOEIC teachers.
- Evening program for a small group of students: TOEIC MISSION with 2 to 5 students per class. Even after school, customized and in-depth classes can be held between students and teachers.

DURATION

- 12 weeks
- Score guaranteed courses have a designated entrance date. Please be sure to contact us.

ADMISSION DATE

Only designated date admission is possible. Inquiries are required before registration.

ADMISSION QUALIFICATION

	PHILINTER LEVEL (CODE)	TOEIC	AGE
TOEIC GUARANTEE 900 UP	Upper-Intermediate (401)	700 above	16 +
TOEIC GUARANTEE 800 UP	Intermediate (301+)	490 above	16 +
TOEIC GUARANTEE 700 UP	Upper-Elementary (201+)	345 above	16 +

CURRICULUM

CLASS TYPE	NUMBER OF CLASSES	SUBJECT / CONTENT
1-on-1	4	TOEIC Listening 1, TOEIC Listening 2, TOEIC Reading 1, TOEIC Reading 2
Small Group	2	TOEIC Integrated 1 (Listening/Test Review), TOEIC Integrated 2 (Reading/Test Review)
Big group	2	Business Idioms, Listening and Dictation, Supplemental Grammar, Supplemental Vocabulary
Evening Program	2	TOEIC MISSION 2 hours from 7 pm-9 pm.
Total	10	

STUDENT REVIEW



Mariko
HAYASHI



Japanese

I chose to come to Philinter because of the guarantee course to exceed my target TOEIC score. As a result, I am currently 10 points short of my target score. But I've improved 720. I've learned a lot from teachers in the Guarantee Course. Teachers in each class were very attentive to my questions and devised way to help me understand what I don't understand.

SPARTA COURSES DAILY SCHEDULE

Sparta Courses follow the same daily schedule, starting at 7:30 and concluding at 21:00, incorporating 2 hours of mandatory Evening Program.

SCHEDULE

TIME	ACTIVITY
07:30 – 08:10 am	BREAKFAST
08:00 – 08:45 am	1st Class
08:50 – 09:35 am	2nd Class
09:40 – 10:25 am	3rd Class
10:30 – 11:15 am	4th Class
11:20 – 12:00 am	5th Class
11:50 – 12:30 pm	LUNCH
13:00 – 13:45 pm	6th Class
13:50 – 14:35 pm	7th Class
14:40 – 15:25 pm	8th Class
15:30 – 16:15 pm	9th Class
16:20 – 17:00 pm	10th Class
17:30 – 18:10 pm	DINNER
18:10 – 19:00 pm	
19:00 – 20:00 pm	Evening Program
20:00 – 21:00 pm	Evening Program

EVENING PROGRAM

CONDUCT SUPPLEMENTARY CLASSES

During the first hour, the teacher may provide short activities such as reading passages or listening exams to provide additional practice and guidance. This creates a controlled environment where students can receive targeted support and practice their skills in a structured way.

GUIDED SELF-STUDY AND HOMEWORK

During the second hour of the program, students work independently on their homework at their own pace. If necessary, students may ask the teacher any questions.

ENCOURAGE ACADEMIC MOTIVATION THROUGH COUNSELING

Academic counseling is provided regularly, and students will receive motivation and suggestions to help them achieve their academic goals.



- General ESL
- Light ESL
- Intensive Power Speaking (IPS)
- TOEIC Regular
- Focus Industry
- Basic Business
- Advanced Business

Semi-Sparta Courses



GENERAL ESL

This course provides a comprehensive and highly popular program with a well-structured curriculum. Students will have 8 hours of regular classes every day, and on weekends, they can enjoy trips and activities with their classmates.

Classes focus on conversation, tailored to each student's needs. Learn speaking, pronunciation, presentations, discussions, grammar, and writing engagingly with diverse materials.

FEATURES

- Semi-spartan system: a well-known study abroad program in Cebu that offers more relaxed school policies. Students are free to go out after school hours. This program is highly recommended for those who wish to study abroad and create memories.
- CONVERSATION-CENTERED OR CUSTOMIZED CURRICULUM: Short-term courses (less than 4 weeks) focus on speaking, pronunciation, and vocabulary. If the course is longer than 6 weeks, writing and grammar are added.
- 1-on-1 and group classes are strategically designed and customized to ensure that students achieve maximum language proficiency.
- Objectives are established at the beginning of each course. If students accomplish their objectives before completing the course, they will be presented with new ones to motivate them to attain mastery of the language.

DURATION

- 1 – 24 weeks
- It is possible to change your course while studying abroad.

ADMISSION QUALIFICATION

- There are no specific entry requirements for this course, but if your English level is very low or zero, we recommend taking the [Zero to One] course first.

ADMISSION DATE

Every Sunday
(Please inquire in advance for Saturday Admission)

CURRICULUM

CLASS TYPE	NUMBER OF CLASSES	SUBJECT / CONTENT
1-on-1	3	Speaking and Listening, Reading and Vocabulary, Word Smart, Grammar for Writing, Grammar for Speaking, Pronunciation Clinic
Small Group	3	Daily News, Start Talking, Basic Accent Training, Grammar 101, Grammar 201, Grammar 301, Dialogue Patterns, Phrasal Verb & Collocations, TED Talk, Accent and Intonation, Compelling Conversations, Debate Excellence, Job Interview, Contemporary Topics, Mastering Idioms
Big Group	2	Listening and Dictation, Supplemental Grammar, Supplemental Vocabulary, Power Multimedia, News and Trends, Premium English
Total	8	

STUDENT REVIEW



Linda



Vietnamese

Before, I used to think that I couldn't listen and speak English fluently because I almost didn't use it in Vietnam and I had very limited exposure to it. But when I came here to Philinter - this school provided me with a good educational environment. Philinter is truly the best of the best.

LIGHT ESL

The light ESL program is tailored for individuals seeking a harmonious balance between their academic commitments and personal responsibilities.

This course is recommended for businessmen, seniors, and parents of families who need sufficient personal time for business or relaxation purposes while studying in Cebu.

FEATURES

- Perfect for those who need enough personal time for business or leisure: 5 hours of class per day.
- CONVERSATION-CENTERED OR CUSTOMIZED CURRICULUM: Short-term courses (less than 4 weeks) focus on speaking, pronunciation, and vocabulary. If the course is longer than 6 weeks, writing and grammar are added.
- SEMI-SPARTAN SYSTEM: The rules are not strict, and you are free to go out after school. If there are no classes, you can go out at any time.

ADMISSION QUALIFICATION

- There are no specific entry requirements for this course, but if your English level is very low or zero, we recommend taking the [Zero to One] course first.

DURATION

- 1 – 24 weeks
- It is possible to change your course while studying abroad.

ADMISSION DATE

Every Sunday
(Please inquire in advance for Saturday Admission.)

CURRICULUM

CLASS TYPE	NUMBER OF CLASSES	SUBJECT / CONTENT
1-on-1	3	Speaking and Listening, Reading and Vocabulary, Grammar for Writing, Grammar for Speaking
Small Group	2	Daily News, Basic Accent Training, Phrasal Verb and Collocations, TED Talk, Accent and Intonation, Job Interview, Debate Excellence, Contemporary Topics
Total	5	



STUDENT REVIEW

David

O H



Korean

I think it was God's grace that my daughter and I studied at Philinter for 4 weeks. My daughter really enjoyed studying English with her teaches. In particular, she talked about Molly, her buddy teacher every night. I think the teacher's teaching capabilities are very high. It's good that if class is difficult. I can request adjustments from the office.

INTENSIVE POWER SPEAKING (IPS)

The program offers intensive lessons that enable students to practice and master communication language for a range of different situations. With a focus on both fluency and accuracy, students will gain the confidence to communicate effectively in any setting.

FEATURES

- The curriculum is designed to help individuals improve speaking skills within a short period. Along with general speaking topics, the program includes specialized subjects such as Presentation, Slang, and Idioms in colloquial language, as well as interesting 'Current Issues' and 'Voice of America' topics to create a comprehensive and optimized curriculum for enhancing speaking abilities.
- This course is taught by teachers who have clear pronunciation and a competent track record in speaking education.
- The CALLAN METHOD is applied to one-on-one classes, and some small groups are taught by native speakers.

DURATION

- 1 – 12 weeks
- It is possible to change your course while studying abroad.

ADMISSION DATE

Every Sunday
(Please inquire in advance for Saturday Admission)

ADMISSION QUALIFICATION

AGE	PHILINTER LEVEL	IELTS	TOEIC
16 +	Elementary (201) above	2.0 – 2.5 above	250 – 340 above

CURRICULUM

CLASS TYPE	NUMBER OF CLASSES	SUBJECT / CONTENT
1-on-1	5	Public Speaking, Speak Right, Speaking and Listening, American Slang and Idioms, Current Issues, Voice of America, Pronunciation Clinic, Spoken Grammar
Small Group	3	Native Conversation, Daily News, Dialogue Patterns, TED Talk, Accent and Intonation, Compelling Conversations, Debate Excellence, Job Interview, Contemporary Topics, Mastering Idioms
Total	8	



STUDENT REVIEW

Andy



Korean

Overall, I was satisfied with my course, teachers are kind and I also like, the education system. There were some subjects that were easy to me, but they changed the class through consulting.

TOEIC REGULAR

This course is designed to help individuals develop effective test-taking strategies and improve their scores on the TOEIC. The course utilizes authentic materials that are constantly updated to provide students with the latest available resources.

During their studies, students are exposed to a variety of strategies and techniques that are easy to implement. Moreover, they receive personalized guidance that helps them identify their strengths and weaknesses so they can focus on areas where they need more support.

FEATURES

- TOEIC regular course with TOEIC professional teachers. Not only improve your TOEIC score but also improve your speaking skills. Scores improve by an average of 100-150 per 4 weeks. (However, the increase slows down from TOEIC 820). A curriculum optimized for short-term study abroad is prepared.
- TOEIC-BUSINESS Collaboration: While taking this course, you can change to a business subject at any time. If you're new to the TOEIC exam, you can still achieve a good score by dedicating 8 weeks to studying. Therefore, it's recommended that you focus on learning English for business communication or other related topics that are commonly required for employment.

DURATION

- 1 - 16 weeks
- It is possible to change your course while studying abroad.

ADMISSION DATE

Every Sunday
(Please inquire in advance for Saturday Admission)

ADMISSION QUALIFICATIONS

AGE	PHILINTER LEVEL	IELTS	TOEIC
16 +	Elementary (201) above	2.0 - 2.5 above	250 - 340 above

CURRICULUM

CLASS TYPE	NUMBER OF CLASSES	SUBJECT / CONTENT
1-on-1	4	TOEIC Listening 1, TOEIC Listening 2, TOEIC Reading 1, TOEIC Reading 2, TOEIC Speaking, TOEIC Writing <i>*Can change one (1) 1on1 class to any 1on1 class in the Business Course</i>
Small Group	2	TOEIC Integrated 1 (Listening/Test Review), TOEIC Integrated 2 (Reading/Test Review) <i>*Can change up to two (2) SGCs to any classes in the Business Course</i>
Big Group	2	Listening and Dictation, Supplemental Grammar, Supplemental Vocabulary, Business Idioms, News and Trends
Total	8	



STUDENT REVIEW

Susan



Taiwanese

I find the TOEIC course arrangement quite good. The course does not only focus on improving student's listening and reading skills but also offers big group classes courses where students can choose from various types of class such as vocabulary and speaking classes.

FOCUS INDUSTRY

In this course, you will be able to practice and acquire relevant English for your job, major, or specific area while experiencing the general business curriculum.

FEATURES

- A real practical business curriculum (2 hours of one-on-one class)
- Rather than simply general business English, you can experience business English for a specific field or occupation.
- General Business English (2 hours one-on-one class and group classes)
- Learn everything from typical business speaking to conferences, meetings, and document work required for practical work, and interviews for employment.

DURATION

- 1 - 12 weeks
- The optimal study period is 8 weeks, but it can be extended up to 12 weeks.

ADMISSION DATE

Every Sunday
(Please inquire in advance for Saturday Admission)

ADMISSION QUALIFICATION

AGE	PHILINTER LEVEL	IELTS	TOEIC
16 +	Pre-Intermediate (301)	3.5 above	530 above

CURRICULUM

CLASS TYPE	NUMBER OF CLASSES	SUBJECT / CONTENT																				
1-on-1	4	Choose 2 subjects (2 hours) from the business classes below. Business Listening, Business Speaking, Meetings and Negotiations, Hosting a Meeting, Telephoning/Telecommunication, Job Interview, Resume Writing, Emailing, Cover Letter, Business Writing Correspondence Elective Class (select one from the options below and proceed to 2 classes) <table border="0"> <tr> <td>• Hotels and Catering</td> <td>• Civil Aviation</td> </tr> <tr> <td>• Flight Attendant</td> <td>• Food Industries</td> </tr> <tr> <td>• Sales and Marketing</td> <td>• Cooking</td> </tr> <tr> <td>• Physiotherapy</td> <td>• Engineering</td> </tr> <tr> <td>• Medical</td> <td>• Mechanical Engineering</td> </tr> <tr> <td>• Nursing</td> <td>• Art and Design</td> </tr> <tr> <td>• Information Technology</td> <td>• Construction: Buildings</td> </tr> <tr> <td>• Software Engineering</td> <td>• Construction: Roads and Highways</td> </tr> <tr> <td>• Finance/Accounting</td> <td>• Architecture</td> </tr> <tr> <td>• Tourism</td> <td>• TESOL/Kindergarten Teacher</td> </tr> </table>	• Hotels and Catering	• Civil Aviation	• Flight Attendant	• Food Industries	• Sales and Marketing	• Cooking	• Physiotherapy	• Engineering	• Medical	• Mechanical Engineering	• Nursing	• Art and Design	• Information Technology	• Construction: Buildings	• Software Engineering	• Construction: Roads and Highways	• Finance/Accounting	• Architecture	• Tourism	• TESOL/Kindergarten Teacher
• Hotels and Catering	• Civil Aviation																					
• Flight Attendant	• Food Industries																					
• Sales and Marketing	• Cooking																					
• Physiotherapy	• Engineering																					
• Medical	• Mechanical Engineering																					
• Nursing	• Art and Design																					
• Information Technology	• Construction: Buildings																					
• Software Engineering	• Construction: Roads and Highways																					
• Finance/Accounting	• Architecture																					
• Tourism	• TESOL/Kindergarten Teacher																					
Small Group	2	Business Talk, Job Interview, Debate Excellence, TED Talk, Accent and Intonation, Compelling Conversations, Daily News <i>*Can change up to two (2) SGCs to any classes in the TOEIC Course</i>																				
Big Group	2	Business Idioms, Listening and Dictation, Supplemental Grammar, Supplemental Vocabulary, Power Multimedia, News and Trends, Premium English																				
Total	8																					



STUDENT REVIEW

Alice



Taiwanese

I'm beyond grateful for the opportunity Philinter offers; it enriches my life, widens my socializing skills, and, most of all, cultivates my English Language.

BASIC BUSINESS

This course is designed for individuals who are new to the business world. It aims to establish a strong foundation of academic and business skills that will benefit those who plan to study advanced level business English in the future. However, it should be noted that this course is not a comprehensive practical business curriculum.

FEATURES

- This course serves as a PRE-BUSINESS program and provides a strong foundation for advanced business
- Easy business curriculum for Business Starters : Easy-level business textbooks are used, with 70-80% of the class covering business and the remaining 30% covering ESL.
- TOEIC-Business collaboration: One-on-one and small group classes can be changed to TOEIC subjects. Up to 3 hours.

DURATION

- 1 – 12 weeks
- It is generally recommended to limit the course to 4 or 8 weeks, although it can go up to 12 weeks.

ADMISSION DATE

Every Sunday
(Please inquire in advance for Saturday Admission)

ADMISSION QUALIFICATION

AGE	PHILINTER LEVEL	IELTS	TOEIC
16 +	Upper Elementary (201+)	3.0-3.5	400-525

CURRICULUM

CLASS TYPE	NUMBER OF CLASSES	SUBJECT / CONTENT
1-on-1	4	Choose 2 subjects (2 hours) from the business classes below. Business Speaking, Business Writing Correspondence, Business Listening, Business Vocabulary <i>*Can change one (1) 1on1 class to any class in the TOEIC Course</i>
Small Group	2	Business Talk, Job Interview, Daily News, Basic Accent Training, Compelling Conversations, Contemporary Topics <i>*Can change up to two (2) SGCs to any classes in the TOEIC Course</i>
Big Group	2	Business Idioms, Listening and Dictation, Supplemental Grammar, Supplemental Vocabulary, Power Multimedia, News and Trends, Premium English
Total	8	



STUDENT REVIEW

Sira



Taiwanese

In this course, my teachers taught me all related skills I need. And they found out that I had low confidence in speaking English. In every class, my teacher encouraged me and even spent extra time to help me practice doing interview.

ADVANCED BUSINESS

This course, aimed at upper-intermediate or advanced-level students, is designed to secure English skills that can be used actively in a business environment.

You can learn everything from everyday business conversations to transactions, meetings, negotiations, emails, and special-purpose document work. However, the content may vary depending on the student's needs.

FEATURES

- Advanced business curriculum tailored to suit the student's needs. Business writing and speaking classes help you cope with practical business English and document work required in real work life. If you are currently unemployed, you can modify or add course content related to job search activities.
- HIGH-INTENSITY PRESENTATION CLASS : Classes with 2 hours of presentations are held every day. Through a series of processes such as choosing a topic, creating a manuscript, proofreading, practicing presentations, and presenting in front of the public, you will acquire 'unforgettable expressions and confidence for your life.'
- TOEIC-Business collaboration: One-on-one and small group classes can be changed to TOEIC subjects. Up to 3 hours.
- SEMI-SPARTAN Program: School regulations are not strict, and you are free to go out if there are no classes. Recommended for those who want to 'study abroad' and make 'memories' together.

DURATION

- 1 – 12 weeks
- The optimal study period is 8 weeks, but it can be extended up to 12 weeks.

ADMISSION DATE

Every Sunday
(Please inquire in advance for Saturday Admission)

ADMISSION QUALIFICATION

AGE	PHILINTER LEVEL	IELTS	TOEIC
16 +	Intermediate (301+)	4.5 above	670 above

CURRICULUM

CLASS TYPE	NUMBER OF CLASSES	SUBJECT / CONTENT
1-on-1	4	Business Presentation (2 hours), Business Writing Correspondence, Business Speaking, Business Listening <i>*Can change one (1) 1on1 class to any class in the TOEIC Course</i>
Small Group	2	Business Talk, Job Interview, TED Talk, Accent and Intonation, Compelling Conversations, Debate Excellence, Daily News, Contemporary Topics <i>*Can change up to two (2) SGCs to any classes in the TOEIC Course.</i>
Big Group	2	Business Idioms, Listening and Dictation, Supplemental Grammar, Supplemental Vocabulary, Power Multimedia, News and Trends, Premium English
Total	8	



STUDENT REVIEW

Seigo



Japanese

I went to study in another country to get better at speaking English for work. The teachers and classes were really good. They taught English in a way that felt like being in a real office, with meetings and presentations.

After I finished studying abroad, I got a job as a foreign consultant, where I help people from other countries. I use what I learned at PHILINTER to talk to my foreign colleagues and bosses. It's been really helpful for my career.



Junior ESL
Junior IELTS
Primary English

Junior & Primary Courses



JUNIOR ESL

This course is designed to develop the basic English Communication skills of learners, providing them with competent teachers, tailored educational materials, and activities suited to their needs within an international environment for real-world application.

FEATURES

- A speaking-centered curriculum is operated. The main aspects of class management are conversation, pronunciation, discussion, public speaking and vocabulary.
- The staff and teachers are experienced and dedicated to junior students.
- There is a great amount of learning. In addition to regular classes, you must take special classes, memorize vocabulary, and keep an English diary.
- Close collaboration between schools and parents to ensure junior success.

DURATION

- 1 – 12 weeks (Weekly Registration possible)
- You can apply for an extension after arriving at school.

ADMISSION QUALIFICATION

- 12–15 years old
- If the junior's level is too low to allow for group classes, classes will only be held one-on-one for a certain period. 2 hours of small group class is changed to 1 hour of one-on-one class.
- Students in this Junior ESL course must register with a guardian (parent).

ADMISSION DATE

Every Sunday
(Please inquire in advance for Saturday Admission)

CURRICULUM

CLASS TYPE	NUMBER OF CLASSES	SUBJECT / CONTENT
1-on-1	4	Interactive Speaking, Speech and Pronunciation, Read and Talk, Grammar for Speaking, Grammar for Writing, Ready to Write, Word Smart, Listen and Chat
Small Group	3	Teen Talk, Active Listening, Role Playing, Junior TV, Vocabulary Works
Evening Program	2	Review 2 hours from 7 pm to 9 pm. (Depending on circumstances, it may start at 6 o'clock)
Total	9	



STUDENT REVIEW

Eric



Chinese

I improved my English skill a lot of! Such as listening, speaking, writing and so on. I think that education is one of the best in Cebu.

JUNIOR IELTS

This is a program designed to prepare students for IELTS in advance. It is recommended not only for juniors preparing for English tests but also for juniors who want a higher level of practical English skills for everyday life.

FEATURES

- A program for juniors who are new to IELTS. Aiming to obtain a maximum IELTS 6.5.
- It is operated in a SPARTAN SYSTEM, with attendance and class attitude strictly enforced.
- Focuses in-depth on all four skills (Writing, Reading, Speaking, and Listening), and each skill is handled by dedicated and IELTS-trained teachers. And provides extensive independent study materials.
- Each skill-based class includes test familiarization and strategies.
- Student progress, including their daily activities, are constantly monitored.
- IELTS MISSION: Time to supplement or review classes at night after regular classes.
- IELTS MOCK TESTS are given every Friday or Saturday.

ADMISSION QUALIFICATION

AGE	PHILINTER LEVEL	IELTS	TOEIC
12-15	Upper Elementary (201+)	3.0 above	400 above

ADMISSION DATE

Every Sunday
(Please inquire in advance for Saturday Admission)

DURATION

- 1 – 12 weeks (Weekly Registration possible)
- If the student's level is low, it is recommended to take the Junior ESL course for 4-8 weeks first, and then take the Junior IELTS.

CURRICULUM

CLASS TYPE	NUMBER OF CLASSES	SUBJECT / CONTENT
1-on-1	4	IELTS Speaking and Pronunciation, IELTS Listening, IELTS Reading, IELTS Writing 1, IELTS Writing 2
Small Group	3	IELTS Vocabulary, IELTS Grammar, Teen Talk, Active Listening
Evening Program	2	IELTS Mission (2 hours from 7 pm – 9 pm)
Total	9	



STUDENT REVIEW

Penny



Taiwanese

The teachers are patient and set courses and goals for each student. I really learned a lot in IELTS courses for four weeks. I think this is my unforgettable memory. If I have a chance and time, I will come to Philinter again to improve my English ability.

PRIMARY ENGLISH

This course merges fun and education for children aged 11 and younger. Skilled instructors with extensive expertise in teaching English to young learners lead the classes, ensuring that students can enjoy the process of learning English from an early age.

FEATURES

- A speaking-centered curriculum is operated. Conversation, pronunciation, phonics, role-playing, and vocabulary are the main aspects of class management. In particular, we help children learn English while having fun.
- Children keep an English diary and memorize vocabulary (10 to 20 words depending on level) every day.
- Only active, experienced teachers teaching English to children.

DURATION

- 1 – 12 weeks (Weekly Registration possible)
- You can apply for an extension after arriving at school.

ADMISSION QUALIFICATION

- 7 – 11 years old
- For young kids who want to have a solid English foundation.
- If the child's level is too low to allow for group classes, classes will only be held one-on-one for a certain period. 2 hours of small group class will be changed to 1 hour of one-on-one class.
- Must be accompanied by a guardian or parent.

ADMISSION DATE

Every Sunday
(Please inquire in advance for Saturday Admission)

CURRICULUM

CLASS TYPE	NUMBER OF CLASSES	SUBJECT / CONTENT
1-on-1	4	Read and Talk, Speech and Sound, Grammar in Action, Ready to Write, Writing ABC, Word Smart, Listen and Chat
Small Group	2	Role Playing, Kids TV, Kids Talk, Active Listening, Vocabulary Works
Evening Program	2	Review 2 hours from 7 pm to 9 pm. (Depending on circumstances, it may start at 6 pm)
Total	8	



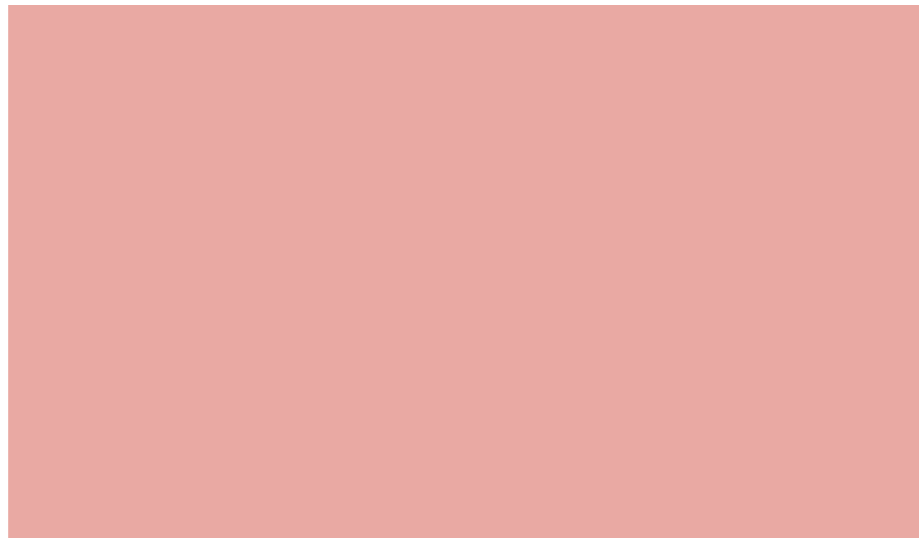
STUDENT REVIEW

Chae
BEEN



Korean

The learnings fit really well for me. At first, English is hard but the teachers helped me which makes it easier for me. Overall, it was fun!



TOEFL



TOEFL

Our TOEFL course, led by experienced instructors, equips individuals with skills and strategies to excel in all exam sections, catering to those aiming for high scores or seeking to improve English proficiency.

Throughout the course, the focus will be on the four key sections of the TOEFL exam: Reading, Listening, Speaking, and Writing. Valuable techniques will be taught to enhance comprehension, vocabulary, grammar, and overall communication skills in English.

FEATURES

- Weekly mock tests track student progress, complementing daily in-class exercises.
- Small and large group classes focus on speaking, pronunciation, grammar, and vocabulary to help boost overall English skills, leading to higher TOEFL-IBT scores.
- The integrated nature of the TOEFL test is being emphasized to combine all skills in integrated tasks (Speaking, Listening, Reading and Writing)

- Books are all updated and new
- Involves exposure to academic texts, lectures, and discussions with supplemental group classes to augment knowledge
- Use of online practice tests, interactive exercises, and multimedia resources to simulate the test-taking environment.

DURATION

- 4 - 24 weeks

ADMISSION DATE

Every Sunday
(Please inquire in advance for Saturday Admission)

ADMISSION QUALIFICATION

TARGET	AGE	PHILINTER LEVEL	TOEFL	TOEIC
110 up	15+	Upper-intermediate – 401	82 above	790 above
100 up	15+	Intermediate – 301+	70 – 81	670 – 785
85 up	15+	Pre-intermediate – 301	56 above	530 – 665

- Students need to pass an online interview before admission.

CURRICULUM

CLASS TYPE	NUMBER OF CLASSES	SUBJECT / CONTENT
1-on-1	5	TOEFL Speaking, TOEFL Listening, TOEFL Writing, TOEFL Reading, TOEFL Vocabulary/Grammar
Small Group	1	Choose one (1): Compelling Conversations, Listening Power, TED Talk, Contemporary Topics, Phrasal Verbs, Grammar, Phrasal Verbs & Collocations, Accent & Intonation
Big Group	1	Choose one (1): Listening & Dictation, Supplemental Vocabulary, Supplemental Grammar, News and Trends, Power Multimedia, Premium English, Business Idioms
Total	7	



IELTS 16-Week for 5.5
 IELTS 16-Week for 6.5
 1-2 Week Program (For New Year and Golden Week)
 Zero-To-One
 Commuter Student Program

Special Courses



IELTS 16-WEEK FOR 6.5

The most stable and effective process for achieving IELTS 6.5.

This course offers a stable and effective curriculum for those who have no prior experience with the IELTS exam.

If you need a high IELTS score and have a 16-week study period, this program will guide you towards achieving clear and successful results, with a guaranteed IELTS score of 6.5 or higher.

FEATURES

A program for pre-intermediate level students without IELTS experience.

- **Intensive ESL (first 4 weeks):** Daily 9-hour course. Develop sufficient basic English skills before taking IELTS.
- **IELTS Intensive (for the next 12 weeks):** Daily 10-hour course. First, general IELTS classes to acquire IELTS 6.0. Afterward, tight and in-depth classes will be held to obtain IELTS 6.5.

DURATION

- 16 Weeks

ADMISSION DATE

Every Sunday
 (Please inquire in advance for Saturday Admission)

ADMISSION QUALIFICATION

AGE	PHILINTER LEVEL	IELTS
15+	Pre-Intermediate (301)	3.5 above

- To enroll in this course, **you need to pass the ADMISSION INTERVIEW**, regardless of whether you have an official score or not.
- **We only deal with the IELTS Academic Module.** Please understand that we do not handle the General Module and UKVI.

CURRICULUM

CLASS TYPE	NUMBER OF CLASSES	SUBJECT / CONTENT
1-on-1	5	Speaking and Listening, Reading and Vocabulary, Word Smart, Grammar for Writing, Grammar for Speaking, Pronunciation Clinic
Small Group	2	Daily News, Start Talking, Basic Accent Training, Usage of Verbs, Phrasal Verb and Collocations, Tenses Empowered, TED Talk, Accent and Intonation, Contemporary Topics
Evening Program	2	Review. Mandatory participation from Monday to Thursday (2 hours from 7 pm – 9 pm).
Total	9	

IELTS 16-WEEK FOR 5.5

The fastest IELTS 5.5 program for Upper-beginners.

This program is for learners who have a low English level but have a desire to take IELTS. It is also suitable for those who want to acquire IELTS 5.5 or higher and have a long-term plan to achieve a high IELTS score in the future.

FEATURES

- A program for upper-beginner level students without IELTS experience.
- **Intensive ESL (first 6-8 weeks):** Daily 9-hour course. Develop sufficient basic English skills before taking IELTS.
- **IELTS Intensive (for the next 8-10 weeks):** Daily 10-hour course. A course to learn how to quickly achieve a score of 5.5 or higher with an IELTS teacher.

DURATION

- 16 Weeks

ADMISSION DATE

Every Sunday
(Please inquire in advance for Saturday Admission)

ADMISSION QUALIFICATION

AGE	PHILINTER LEVEL	IELTS
15+	Upper-beginner (101+)	1.5 above

- To enroll in this course, **you need to pass the ADMISSION INTERVIEW**, which assesses your basic abilities in speaking, grammar, and vocabulary.
- **We only deal with the IELTS Academic Module.** Please understand that we do not handle the General Module and UKVI.

CURRICULUM

CLASS TYPE	NUMBER OF CLASSES	SUBJECT / CONTENT
1-on-1	5	Speaking and Listening, Reading and Vocabulary, Word Smart, Grammar for Writing, Grammar for Speaking, Pronunciation Clinic
Small Group	2	Daily News, Start Talking, Basic Accent Training, Usage of Verbs, Phrasal Verb and Collocations, Tenses Empowered, TED Talk, Accent and Intonation, Contemporary Topics
Evening Program	2	Review. Mandatory participation from Monday to Thursday (2 hours from 7 pm – 9 pm).
Total	9	

1 - 2 WEEK PROGRAM (FOR NEW YEAR AND GOLDEN WEEK)

A short-term program with the best speaking-up effect!

Use your vacation as a great opportunity to improve your practical conversation skills. The program focuses on developing practical English skills tailored to the learner's needs, ensuring meaningful progress in a short period.

FEATURES

SPEAKING ORIENTED CURRICULUM

- All curriculum consists of speaking-related subjects only.
- Elementary or Upper-elementary level students are mainly assigned subjects such as Speak Right, Grammar for Speaking, Usage of Verbs, and Dialogue Patterns.
- For Intermediate and higher-level students, classes are focused on presentations and discussions. Subjects such as Public Speaking, Current Issues, Debate Excellence, and American Slang & Idioms are mainly assigned.

GUARANTEED 6 DAYS OF CLASS PER WEEK

- This program guarantees classes six days a week, from Monday to Saturday, regardless of national holidays to ensure that students can optimize their learning time and achieve their language objectives efficiently.
- 43 hours of class per week. 8 hours a day on weekdays and 3 hours on Saturdays.

ADMISSION DATE

This course is only available during the year-end and New Year holidays (the last week of December and the first week of January) and the two weeks of Golden Week.

DURATION

- 1 - 2 weeks
- This course operates only for two weeks during the year-end or New Year holidays and two weeks during Golden Week.

ADMISSION QUALIFICATION

AGE	PHILINTER LEVEL	IELTS	TOEIC
16+	Elementary (201 above)	2.0 above	250

- Basic grammar and vocabulary knowledge are required as classes focus on speaking. Elementary level or higher is necessary.
- Classes for upper intermediate and advanced levels are also offered.
- **Only 20 people are allowed** to register for this course during each year-end, New Year or Golden Week period.

CURRICULUM

CLASS TYPE	NUMBER OF CLASSES	SUBJECT / CONTENT
1-on-1	6	Public Speaking, Speak Right, Grammar for Speaking, American Slang and Idioms, Current Issues, Pronunciation Clinic, Voice of America
Small Group	2	Daily News, Usage of Verbs, Dialogue Patterns, Phrasal Verb and Collocations, Beyond Prepositions, Tenses Empowered, TED Talk, Accent and Intonation, Compelling Conversations, Debate Excellence, Job Interview, Contemporary Topics, Mastering Idioms
Saturday Class	3	
Total	11	

ZERO-TO-ONE

For absolute beginners, to gain confidence in English!

This special program is **designed for complete beginners** and those lacking confidence in their English language abilities. Our four-week program provides a supportive and inclusive environment for learners to build basic conversation skills and gain confidence in their English language abilities.

FEATURES

- **CURRICULUM CENTERED ON SPEAKING, PHONICS, AND VOCABULARY:** To optimize learning outcomes, the focus is on mastering speaking or speaking-related subjects. However, depending on the student's level of proficiency and adaptability, additional subjects such as grammar and reading may also be given.
- **ACADEMIC GOAL:** The purpose of this course is for learners to secure English proficiency at an upper-elementary level (IELTS 3.0 or TOEIC 400 or higher).

- **TEACHERS SPEAK CLEARLY AND SLOWLY:** Only experienced teachers who can effectively teach students with zero-level English are assigned to this program.
- **ONLINE CLASSES BEFORE ADMISSION:** To have a proper preparation and study more effectively, online classes are conducted three (3) times a week for four (4) weeks before admission.

ADMISSION QUALIFICATION

- This course is suitable for complete beginners who have just passed the "alphabet level" (PHILINTER ACADEMY English level 100 or 101).
- It is also recommended for those who have studied English for a long time and think their level is very low.
- There is no test for admission.

DURATION

- 4 weeks only
- After completing this program, students can apply for General ESL or Intensive ESL (Spartan Program)

ADMISSION DATE

Every Sunday
(Please inquire in advance for Saturday Admission)

CURRICULUM

CLASS TYPE	NUMBER OF CLASSES	SUBJECT / CONTENT
1-on-1	5	Speaking and Conversation Classes <ul style="list-style-type: none"> • Basic Conversation Skills • Vocabulary Building for Speaking • Pronunciation and Accent Reduction • Phonics • Fluency and Confidence Building Optional – Depending on the student's ability <ul style="list-style-type: none"> • Reading Skills • Essential Grammar
Evening Program	2	Review (Optional) 2 hours from 7 pm – 9 pm
Total	7	

COMMUTER STUDENT PROGRAM

Choose to take classes without using a dormitory!

Philinter Academy launched the Commuter Student Program in 2024, catering to those desiring English learning and memorable experiences in Cebu, emphasizing privacy, similar to studying in Canada or Australia.

CURRICULUM

- The curriculum for students enrolled in the Commuter Student Program is tailored to their selection of ESL and Business courses. The specific courses chosen by the students determine the structure and content of their academic program.) Students can participate in English Day, Yoga, Zumba, and Club Activities hosted by Philinter.

DURATION

- The minimum study period for a commuter student is 4 weeks.
- If it is more than 4 weeks, you can apply for weekly registration.

FEATURES

- The Commuter Student Program is ideal for those who value not just English studies but also the memories of Cebu and the freedom of personal life.
- This program includes only one class selection without using the dormitory or cafeteria for meals. Therefore, most school regulations regarding curfew, alcohol consumption, tests, attendance, etc., do not apply.
- Commuter Students can choose from a variety of Philinter Academy's ESL and Business courses.
 - **Individuals aged 16 and older** can choose General ESL, Intensive Power Speaking (IPS), TOEIC Regular, Basic Business, Focus Industry, and Advanced Business courses. For course details, please refer to each course page.
 - **For juniors, Primary English (7-11yrs) and Junior ESL (12-15yrs)** are available. Students cannot select the Light ESL course, which is intended for those using the Philinter dormitory or accommodation.
 - **For IELTS, TOEFL, etc., students** do not have to choose a regular course, but only 2 hours of one-on-one classes are available if they wish.
- Students can participate in English Day, Yoga, Zumba, and Club Activities hosted by Philinter.

FACILITIES

PHILINTER ACADEMY

Philinter Academy furnishes students with the facilities and resources essential for a high-quality education that surpasses expectations, ultimately resulting in outstanding achievements and successful learning outcomes.



LOBBY AREA



1 ON 1 CLASS CUBICLE



SMALL GROUP CLASSROOM



BIG GROUP CLASSROOM



STUDENT STUDY HALL



TRAINING ROOM



AMPHITHEATER



DINING HALL



CAFE



IELTS TEST CENTER

ACCOMMODATION

INTERNAL DORMITORY

Dedicated to offering students more than just academic success, Philinter Academy strives to ensure their comfort, safety, and overall well-being during their time away from home. To fulfill this commitment, the academy provides a diverse array of accommodations tailored to meet the specific needs and preferences of its students.



DORM FACADE



DORM LOBBY



DORM HALLWAY



SWIMMING POOL



SINGLE ROOM



DOUBLE ROOM



TRIPLE ROOM

LAUNDRY SERVICES – Twice a week, at specified times, students have the option to have their laundry washed and folded

HOUSEKEEPING – The dormitory rooms are cleaned twice a week to ensure cleanliness and hygiene. Additionally, to maintain the comfort and wellbeing of the students, fresh bedsheets are provided every two weeks.

MONEY EXCHANGE – Upon arrival, students can conveniently exchange USD to Philippine Peso (Php) at the accounting counter inside the school office.

AIRPORT PICK-UP – Philinter provides a convenient pick-up service for its students upon their arrival.

ACCOMMODATION EXTERNAL DORMITORY

Dedicated to offering students more than just academic success, Philinter Academy strives to ensure their comfort, safety, and overall well-being during their time away from home. To fulfill this commitment, the academy provides a diverse array of accommodations tailored to meet the specific needs and preferences of its students.



AZON FACADE



SINGLE ROOM (AZON)



DOUBLE ROOM (AZON)

Furniture and appliances include: basic table and chair, bed, cabinet, refrigerator, water heater, microwave. Available only in AZON.

SURROUNDING ENVIRONMENTS

Students can make the most of this handy guide, which covers everything from shopping for personal essentials, exchanging money, and ordering food at a restaurant to navigating through stores conveniently,

PLACES NEAR AZON CONDO



MARINA MALL



ISLAND CENTRAL MALL



STARBUCKS



NONKI



CORE PACIFIC

- After turning your back on Azon, walk to the right towards Marina Mall, which is approximately 6-7 minutes away (about 150 meters).
- In or near Marina Mall, you'll find supermarkets, several restaurants, pharmacies, massage shops, Starbucks, and a Japanese restaurant. The Japanese restaurant Nonki is 30 years old and is quite famous in Cebu.
- The currency exchange shop is located on the first floor of the nearby Island Central Mall (ICM), allowing students to exchange money without needing an ID or passport.

PLACES NEAR THE DORMITORY



GAISANO MALL ENTRANCE



TOM & TOMS

- After leaving the school, turn left and walk for about 5 minutes (approximately 120 meters) to reach Gaisano Mall. Adjacent to Gaisano, you'll find a Tom & Toms coffee shop (first floor of Gaisano) and a McDonald's.

PHILINTER ACTIVITIES FOR YEAR 2024

Activities are vital for creating an engaging learning environment, improving language skills, fostering cultural understanding, and boosting students' growth and confidence. To achieve these goals, Philinter organizes specific activities. Our activities in 2024 are progressing as follows.



Outreach Program

Every month, we go to a specific place to help those who are in need. We offer our time, resources, and kindness to make a positive impact in their lives.

Swimming Lesson

Held during class-free times at the school pool; though not run by the school, we guide interested individuals to instructors.



English Day

Philinter Academy's signature event since 2005, featuring various performances for students and teachers, lasting 2 to 5 hours, depending on the event.

Movie Time

Enjoy movies in the Amphitheater for entertainment, education, and emotional experiences that bring people together.



Reading Club

Aiming to encourage enjoyable reading and meaningful book discussions, recognizing the various benefits of engaging the mind through reading.



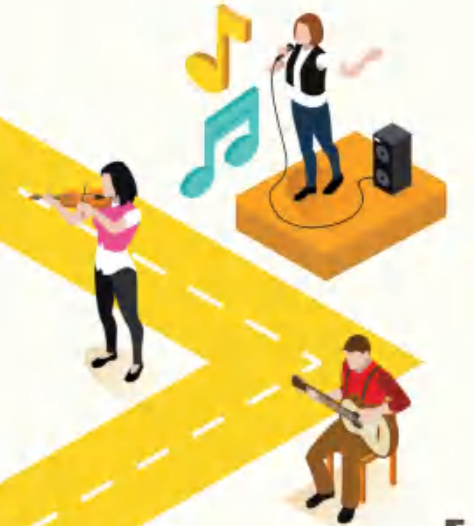
Yoga Class

Yoga lessons led by a certified coach from Mongolia, promote physical well-being with unique benefits such as reduced joint impact and increased muscle resistance.



Music Club

An engaging experience for students who want to learn music, fostering creativity and support for those aspiring to become professionals or play for fun.



Zumba

Join our twice-a-week Zumba sessions, a school tradition for years, promoting heart health, calorie burn, muscle tone, and stress reduction through lively music and moves.



FUN WEEKEND ACTIVITIES

During the weekend, students enjoy a variety of activities individually and with classmates.

Rent a car (or a car and driver) for a short trip to your desired destinations in Cebu. Create your unique travel experience in famous travel spots and quiet cities.

Personal Trip



Mactan Air Base Golf near the school. It is located 10 minutes away by car. The cost is approximately 4,000 to 5,000 pesos. There is also a golf driving range here.

Golf Rounding & Driving Range



Step onto the court with rackets and shuttlecocks at Ajikun Badminton Club. It opens every Monday to Sunday from 7:00 P.M. onwards. They also offer racket rentals and shuttlecocks available for purchase, ensuring you're fully equipped for a thrilling game.

Badminton



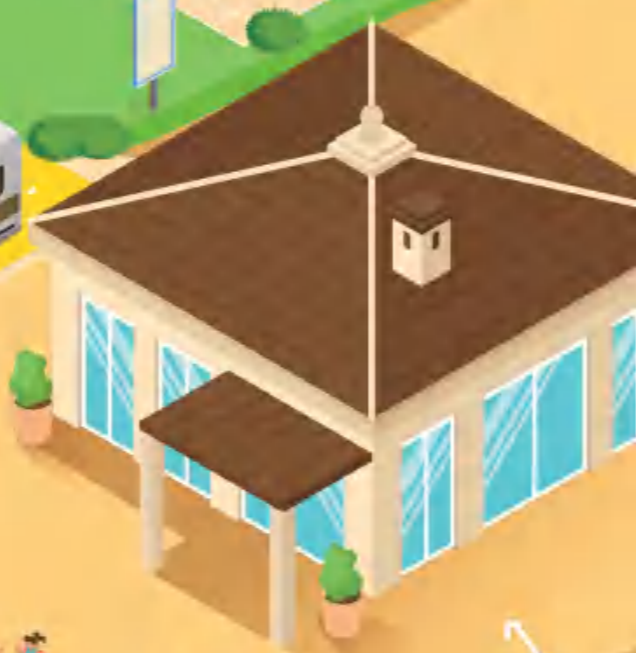
Scuba Diving & Ocean Activities

Agents on Mactan Island offer guidance for various ocean sports like scuba diving, island hopping, and shark activities. Check the school bulletin board for details.



Resort Tour

Explore 5-star hotels on Mactan Island with affordable day or 2-day/1-night tours. Top picks include Shangri-La Hotels and Resort, Movenpick, ideal for a short break, Plantation Bay Resort with family-friendly water park facilities, and J-Park Island Resort.





CONTACT US

Ceniza St., Mustang, Pusok Address
Lapu-Lapu City, Cebu
Philippines, 6015

032 340 7453 Landline

philinter.info@gmail.com Email
philinter.vn@gmail.com
philinter@hanmail.net

Philinter Academy Skype
philinterjp Line
0917 144 8526 Zalo
scud76 KakaoTalk
zy1602705508 WeChat