

Osiris Systems, Inc. (OSI)

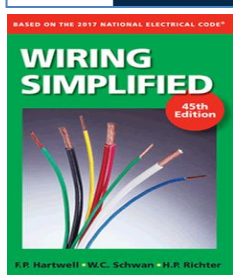
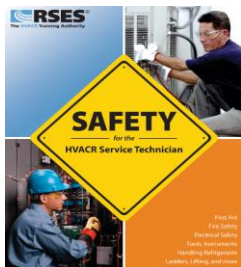
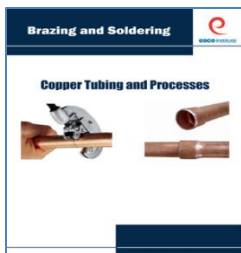
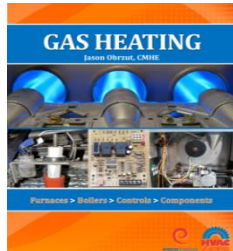
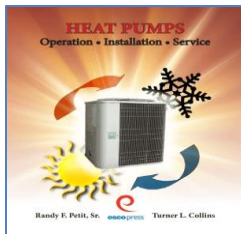
OSI training platforms are short effective training programs that teach usable entry-level skills to our job-seekers. Participants in our training programs will receive Certifications of Completion per training opportunity. Our Catalog of Placement Trainings includes the following:

Basic Construction, EPA Certification

Basic Electrical, HVAC / Heat pump Maintenance

Mentoring, Life Skills & Financial Literacy

A Few New Certifications Offered



Perry Kirkpatrick

CEO and Founder of Osiris Systems, Inc.
“Osiris” helps remove barriers, people may face after incarceration. So they can re-enter their community.

Educational and Resource Training Programs
<https://osirissystems.weebly.com/stopp.html>

My Team



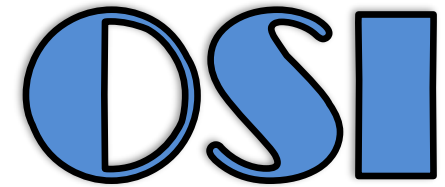
Marshae Kirkpatrick

a native North Carolinian, is an accomplished early childhood professional, level I administrator, and member of the National Association for the Education of Young Children (NAEYC). Ms. Kirkpatrick is currently completing a Professional Associate degree in Early Childhood Education at Central Piedmont Community College.

Dianne Dobey Owner
of Dianne Dobey Construction (WSBO) Financial Literacy 101, learning the basics to budgeting and Wealth.



STAKEHOLDERS



Osiris Systems, Inc.

Let's



Through

Apprentice Training

Osiris Systems, Inc.

Perry Kirkpatrick

osirissystemsinc@yahoo.com

912-223-0057

Proud Member of “ JPN ”
In Collaboration with Joynt Production Network &
The Express H.O.M.E. Program, Inc.



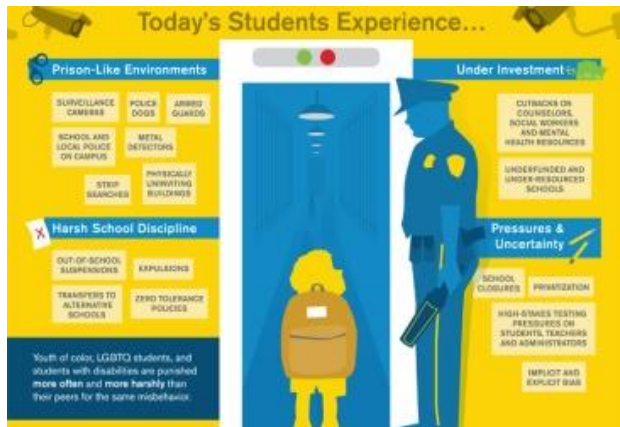
**Georgia Vocational
Rehabilitation Agency**

Yesterday

The school-to-prison pipeline begins in deep social and economic inequalities, and has taken root in schools throughout this country.



The “zero tolerance” policies in schools today are the most extreme form of punishment. They were originally written for the war on drugs in the early 1980s, and later applied to schools.

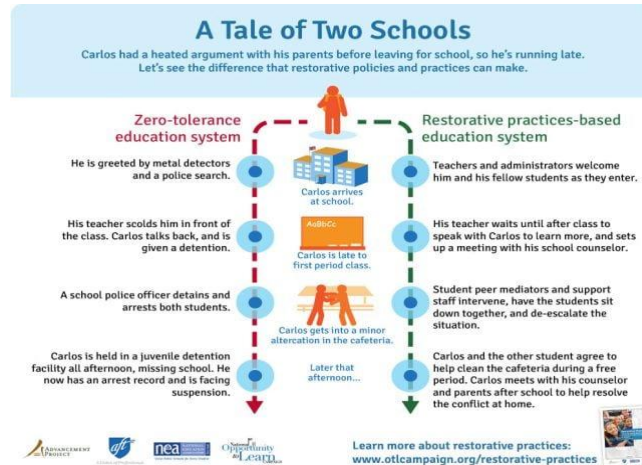


The School -to-Prison Pipeline is a disturbing national trend. Where in children are funneled out of public schools into the juvenile and criminal justice system. Many of these children have learning disabilities, or a history of poverty, abuse or neglect, and would benefit from additional education and counseling services. Instead they are isolated, punished and pushed out.

My Solution

RESTORATIVE JUSTICE PRACTICES

- Build relationships
- Strive to be respectful to all
- Provide opportunity for equitable dialogue and participatory decision-making
- Involves all relevant stakeholders
- Addresses harms, needs, obligations, and causes of conflict and harm
- Encourages all to take responsibility



Our program seeks to build and strengthen relationships within the community in two constructive ways:

- Encourage public awareness of the injustice that all children face within the educational system as it relates to the pipeline and the judicial process
- Promote policy changes through data accountability and fact-based incidental reporting which serves to support and strengthen the dismantling of the school to prison pipeline in the CSRA!!!

School to Prison Pipeline = Human Trafficking

Tomorrow

END THE SCHOOL TO PRISON PIPELINE

Criminalization of children and youth, excessive and exclusionary school discipline policies, and juvenile justice involvement, push too many children and youth into and/or deeper into – the criminal justice system.

Black students are 4x more likely to be suspended than their white peers

Black girls are 10x more likely than white girls to receive discipline referrals

@Kids_Rising KIDSRISING! @MomsRising



SERVICE SPOTLIGHT

This month, RSU recognizes Perry Kirkpatrick. A well-established heating, ventilation and air conditioning (HVAC) technician in Augusta, Perry Kirkpatrick provides a federally recognized training that allows participants to become certified HVAC technicians. Having successfully trained 15 participants, Mr. Kirkpatrick is eager to extend his services across the state. Training is provided at no cost to participants.

The RSU team commends Perry Kirkpatrick on his support of reentry and his outstanding service to Georgia!

For more information, contact Reginald Cofer: reginald.cofer@dcs.ga.gov