



PRODUCT
BROCHURE

State-of-the-art aesthetic
equipment backed by expertise.
Trusted by professionals, tested
for reliability, and designed for
success.

LUMA
SOLUTIONS

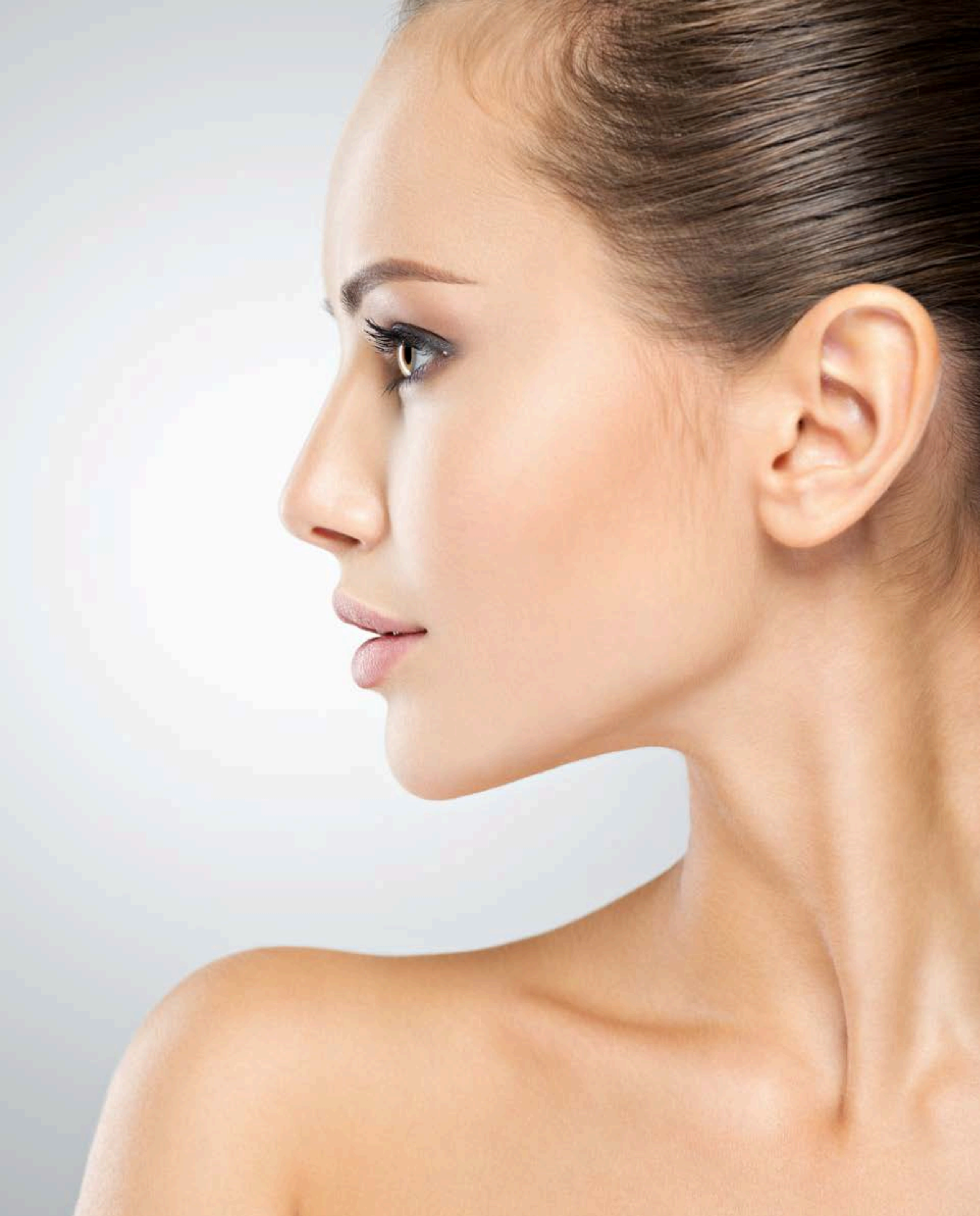


About Luma Solutions

At Luma Solutions, we specialize in providing high-quality aesthetic machines designed to ensure safety and client satisfaction. With experience of over three decades in business and extensive expertise in the aesthetic industry, our team's journey began with the challenge of finding reliable equipment for our own clinics. This challenge inspired us to conduct thorough research on the best available options.

Our Commitment to Quality

As clinic owners ourselves, we understand the importance of utilizing effective machinery. We not only design a selection of our machines in the UK, but we also use several of them in our own practices. We are committed to selling only those machines that have a high client demand for treatments, ensuring that you can maximize your profits while providing sought-after services.



Trusted Manufacturers & Engineering Expertise

To guarantee excellence in our products, we meticulously choose our manufacturers based on their extensive quality control measures.

Their comprehensive teams of quality check engineers and dedicated safety departments ensure that every machine meets the highest standards before it ever reaches your clinic. Additionally, our engineers conduct thorough inspections and safety checks of all machines at our UK depot to verify their performance and safety prior to dispatching them to you. This rigorous attention to detail gives us confidence that the equipment we provide is both reliable and safe.

Through extensive discussions with certification bodies in the UK and collaboration with skilled, UK-based laser engineers who have worked with leading UK laser companies, we identified crucial criteria for selecting reputable manufacturers. These criteria include valid certifications, strong reputations, and a solid safety check department.

Our engineers now partner with Luma Solutions to offer maintenance checks, servicing, and repairs, ensuring your machines operate at peak performance.

Custom-Tailored Solutions

Our team works closely with these manufacturers, supplying detailed specifications and guidelines that allow us to tailor our machines precisely to the needs of our clients, offering unique solutions that stand out in the market

Reliable and Affordable Machines

We are proud to present a carefully sourced selection of top quality machines that meet industry standards. Our mission is to provide you with affordable and reliable machines that enhance your practice and drive profitability.

Comprehensive Training & Support

Additionally, Luma Solutions collaborates with experienced educators who possess a wealth of knowledge in the operation of aesthetic devices. They offer comprehensive, fully accredited device training, either at your premises or online. This ensures that you and your staff are fully equipped to utilize the technology effectively

Customizable payment solutions

Select from Various Budget friendly options to enhance your business's revenue. At Luma Solutions we provide tailored payment plans that align with your cash flow needs Enabling you to offer exceptional skin care treatments with cutting edge beauty devices .

Available payment options

- One -time purchase: Make a 50% deposit to secure your order then pay the remaining balance upon delivery.
- Simple rental: easily rent a premium device and connect with us at the end of your rental for the next steps .
- Flexible financing: explore various payment plans with our trusted finance partners.



RGB, UV, PL spectral imaging technology



Expert Level
Analysis



Records
Comparison



6 Detect &
Analysis
Functions



LA
LUMA ANALYZER



Comprehensive Skin Diagnostics

Evaluate 12 crucial dermis and epidermis factors, including hydration, pores, sebum levels, texture, pigmentation, UV damage, and wrinkles, ensuring a holistic skincare approach.

Lightning-Fast Results

Experience a complete skin analysis in just 15 seconds, offering instant, data-driven insights to optimize treatment plans.

Personalized Skincare Solutions

Generate tailored product recommendations and customized skin management programs based on a vast clinical database and years of research.



Pores

RGB spectral visualization of pores: analyzes pores as low as 0.02-0.05 mm in diameter.



Wrinkles

RGB Spectral visualization of wrinkles: analysis of the depth of skin creases and its irregularities. The condition of wrinkles is accurately determined by the detailed analysis.



Acne

RGB spectral visualization of acne: analysis of dark spots on round-shaped skin and darker than normal colors.



Texture

Spectral visualization of the PL skin texture: This is the display of the relief, texture of the skin surface, as well as the prediction of future age-related changes.



UV Pigmentation

Pigmentation analysis via UV spectral imaging: This is a display not only of the current pigmentation situation, but also of the prediction of future formations. The darker areas require more attention.



Brown Area

Brown zone: This is a zonal fixation of cell metabolism, which is responsible for the restoration of cells after cosmetic manipulations. With the help of Zemit's Pro analysis, a cosmetologist can see areas of delayed intracellular metabolism.



Sensitive Area

Sensitive areas: Fixation of the zonal sensitivity of the skin, its susceptibility to allergic reactions. This can be both a seasonal allergy and a reaction to cosmetics with harmful elements in the composition.



UV Porphyrin

Spectral visualization of porphyrin UV: Sebum secretion and the area of distribution of black dots.



UV Damage

UV damage: Pigmentation can occur at different levels of the skin. It is formed under the negative action of ultraviolet rays and is a stain. The device fixes the depth and size of age spots.



UV Moisture

UV hydration: How much the moisture level of the dermis corresponds to the norm.



Skin Aging

Skin aging: Shows the dynamics of the aging process of the skin, provided that the client will not change anything in the care.



Skin condition

Improvement of the skin condition: Displays the dermatological scenario of the future 3-5 years, provided that properly selected care is used.

AI Face Recognition

The Luma Analyzer is an advanced skin analysis tool that captures high-definition facial images and conducts detailed assessments using 36 million HD pixels, AI recognition, and 3D simulation.

You can upload your products to create tailored treatment plans, promote your services and integrate booking links for easier access. The software also enable, side by side comparisons of clients progress throughout their skincare journey.

LA
LUMA ANALYZER



3D Imaging

Experience 3D skin imaging on a 13.3" touchscreen - no extras needed.

The Luma Analyzer features cloud computing for tracking skin progress, a 40 LED light source for 90-95% accurate consultations, and operates on standard UK mains power.

Compact at 66 x 55 x 55 cm and weighing only 10 kg, its easily portable and supports 14



LA
LUMA ANALYZER