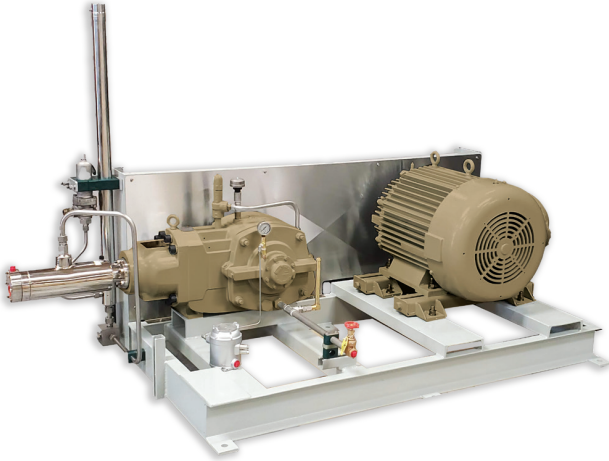


Model MP-100

Fuel Station/Storage Filling/Special Application Pump



Specifications

Bore x Stroke (single cylinder)	in	1.625 x 2.25	1.97 x 2.25
	mm	41 x 57	50 x 57
Flow Rate	gpm	2.6 – 51.5	3.8 – 75.7
	lpm	9.7 – 195.2	14.3 – 286.9
	LH ₂ kg/hr	30 – 600	40 – 850
Pump Design Rating	hp	15 – 500	15 – 450
	kw	11 – 373	11 – 336
Maximum Discharge Pressure	psi	13,000	8,000
	bar	900	550
NPSPR	psi	5 – 15	5 – 10
	bar	0.35 – 1.0	0.35 – 0.70
Speed Range	rpm	150 – 600	150 – 600

Consult Nikkiso ACD engineering to confirm available sizes and ratings.

Features & Benefits

- Modular, compact displacement pumps available in 1, 2, 3 or 5 cylinder configurations provide a wide range of flows
- Vacuum jacketed cold end for minimal cool-down losses and economical operation, ideal for liquid hydrogen
- Pressurized oil lubricated drive with integral oil pump and reservoir, allows higher bearing loads/prevent oil leakage
- Compatible with external oil cooler or lube system for continuous duty applications
- State-of-the-art internal sealing design for high efficiency and minimized losses

Applications

- Storage filling
- Special medium to heavy duty applications
- Continuous duty applications
- LH₂ fueling station applications
- Marine fuel gas systems

Liquids Pumped

- Nitrogen
- Oxygen
- Argon
- Methane
- Hydrogen

Typical Scope of Supply

- Vacuum jacketed cold end with pressure oil lubricated drive end
- Standard suction adapter with Monel strainer
- Distance piece with purge ports
- Hot dipped galvanized steel skid
- TEFC motor
- High pressure relief valve with discharge line and surge chamber
- Drip pan kit for LH₂ applications
- Suction/vapor return manifold for multiple cylinder configurations