

Advanced Environmental Instrumentation

Harnessing the Power of Mobile Computing



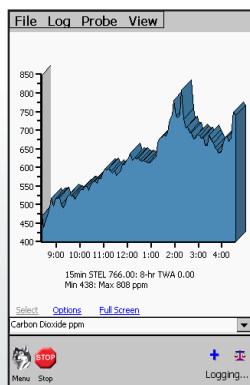
✓ Surveyed

✓ Documented

✓ Reported



Live Graph

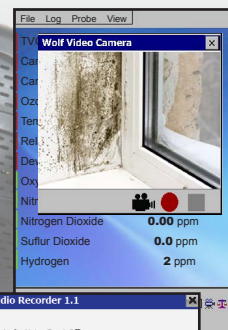


Live Display

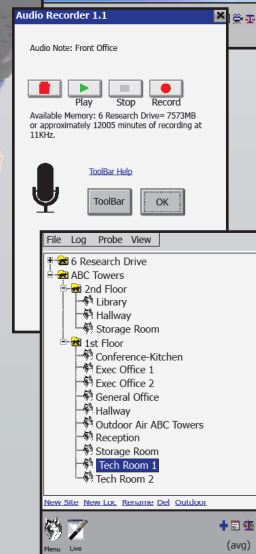
Parameter	Value
TVOC	11 ppb
Carbon Dioxide	848 ppm
Carbon Monoxide	1.4 ppm
Ozone	0.00 ppm
Temperature	24.9 °C
Relative Humidity	29.7 %RH
Formaldehyde	21 ppb
Particulate	61.74 µg/m3
ΔP	0.2 Pa
Barometric	1006 mbar

Example Screens

Video/Photo Notes



Audio Notes



Descriptive Data File Names

ADVANCEDSENSE[®] PRO

Environmental Test Meter Plus



GRAYWOLF[®]
SENSING SOLUTIONS

GrayWolf is transforming the way that environmental measurements are taken. The AdvancedSense Pro meter runs highly advanced, very user-friendly application software. Display, data-log and annotate (on-site) a broad range of parameters with a single, rugged, cutting edge instrument.

- Simultaneously connect 1 or 2 GrayWolf DirectSense[®] probes with up to 8 sensors per probe plus a particulate and/or formaldehyde meter
- Available sensors; differential pressure, airspeed, TVOCs, CO₂, %RH, °C/°F, CO, O₃, NH₃, H₂S, NO, NO₂, SO₂, Cl₂, HCN, H₂, HF, HCl, F₂, HCHO and other parameters
- Backlit color touch screen with virtual keyboard (for text input such as descriptive data file)
- Bluetooth for wireless connection to probes (as a standard alternative to cabled connection).
- WiFi for emailing data, live updates and optional GrayWolfLive[®] remote data access
- **Feature rich** with productivity tools that make your environmental surveys more efficient, more detailed, more reliable:
 - Built-in 2MP camera for photos/videos that attach to data (with annotation)
 - Microphone for audio documentation of surveys
 - Text notes, field (Word template) notes, event notes and more auto-attach to data
 - Speaker for audible queues, alarms and more
 - On-board educational info, application docs, help videos, sensor tips and more
 - Data transfer & reporting software for trend graphs, note management and much more
- Highly intuitive and extremely Easy-To-Use



ADVANCEDSENSE[®] PRO

Environmental Test Meter Plus

SPECIFICATIONS:
(for additional sensor/probe specifications refer to GrayWolf's DirectSense[®], pitot tube and thermocouple brochures)

- General:**
- Dimensions:** 96.0mm (3.8in.) w. x 177mm (7.0in.) h. x 47.0mm (1.8in.) d.
 - Construction:** Rugged polycarbonate plastic with rubberized side grips. IP64
 - Weight:** 700gr (1lb 8.5oz.) Add 50gr (1.5oz.) for auto-zeroing ΔP option
 - Screen Size:** 3.5" HVGA 320 x 480 color touch screen with backlight
 - Memory:** 32GB for data-logging (millions of readings) and notes (photo/video/audio), help videos, documents and WolfSafe™ auto-data backup
 - Camera/LED:** Integral 2MP photo/video camera and 17cd LED illuminating/inspection light
 - Wireless Network:** WiFi 802.11 a/b/g with integrated antenna and Bluetooth 4.0 standard (may optionally be ordered with wireless hardware removed)
 - Audio:** Integral electret microphone (on front, for audio recording) and 8 ohm speaker (on back, for audio queues, help videos and audio note replay)
 - Mounting:** 1/4" - 20 thread (on back) for belt clip, etc. (& for included mini tripod/stand)
 - Operating Range:** -10°C to 50°C (15°F to 122°F), 0 to 100 %RH non-condensing

- Connectors:**
- 2 x Lemo 8F pin for GrayWolf DirectSense probes (the AdvancedSense Pro will support up to 4 x DirectSense probes with Y-adapters)
 - 1 x Lemo 7F pin for particulate meters or RH-AS2 direct-connect TRH probe
 - 2 x sub-mini type K thermocouple temperature sockets. Range -80 to 1100°C (-110 to 2010°F)
 - 1 x Lemo 7M pin for formaldehyde meter, or optional USB key download adapter cable
 - 1 x USB mini B socket. 1m mini USB B to USB A download cable supplied as standard
 - 1 x 12V, 2.1mm DC power socket
 - Optional: 2 x 4mm posts for differential pressure tubing
- Power:**
- Battery:** 4250 mAh Lithium Ion rechargeable
 - Battery Life:** 16+ hours typical for new battery with backlight off (and probes self-powering)
The AdvancedSense Pro can power DirectSense probes. Battery life will vary when powering probes, pressure sensors or wireless.
 - Recharge time:** 4 hours typical. Red/green front LED displays charging/fully charged status
 - Power supply:** 100/240VAC, 50-60Hz external charger. Specify local plug

All specifications are subject to change without further notice

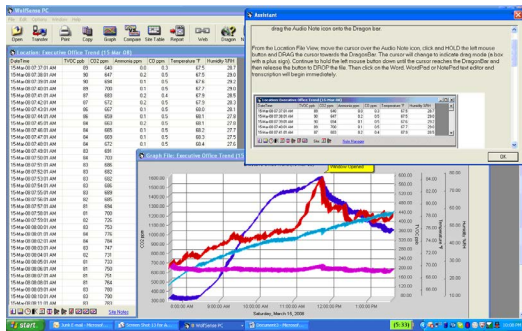
Optional Built-in Sensors:

	Differential Pressure (DP-702LH)	Barometric Pressure (BP-101A)*
Range (auto-ranging, dual DP sensors)	±10,000Pa, ±40 inH ₂ O, ±1000 mmHg, ±100 mbar, ±70 mmHg	600 to 825 mmHg, 800 to 1100mBar, 23.50 to 32.50 inHg, 0.80 to 1.10atm
Resolution	0.1 Pa, 0.001 inH ₂ O, 0.01 mmHg, 0.001 mbar, 0.001 mmHg	0.1mmHg, 0.1mBar, 0.01 inHg, 0.01atm
Accuracy (auto-zeroing enabled)	±1% of rdg ±0.1Pa up to 250Pa, ±1%rdg ±4Pa >250Pa (±1% of rdg ±0.001 inH ₂ O to 1.000 inH ₂ O, ±1%rdg ±0.015 inH ₂ O >1.000 inH ₂ O)	±0.1% rdg

Differential Pressure is auto-zeroing (every 2 minutes by default but zeroing frequency is user adjustable to 5 min. or OFF)

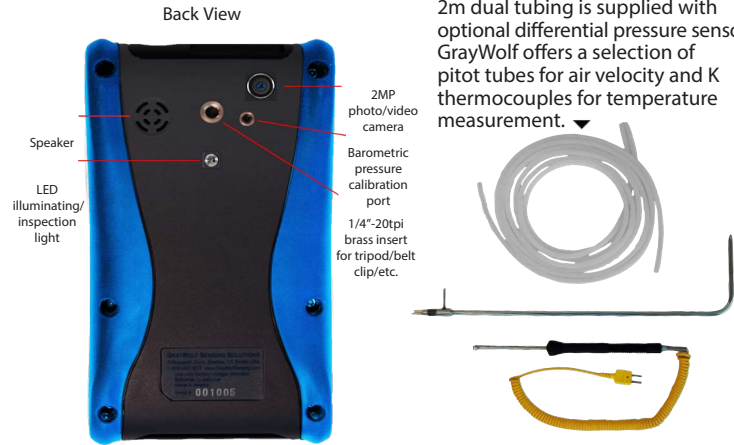
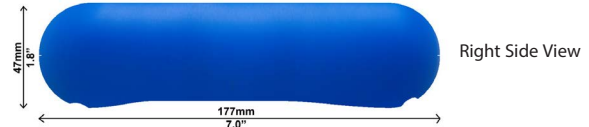
*The barometric pressure sensor, when installed, will compensate mass concentration readings (µg/m³) for pressure changes.

WolfSense[®] PC data transfer and analysis software supplied as standard



Measure Smart

Report Efficiently



2m dual tubing is supplied with optional differential pressure sensor. GrayWolf offers a selection of pitot tubes for air velocity and K thermocouples for temperature measurement.



PCC-AS01 pouch with neck-strap for hands-free surveys. Also eyelets for camera/inspection light and hand-strap/belt-loop.



PCC-20A Hardshell case holds AdvS Pro, probes (DSII inside or extended for secure monitoring) & accessories. Larger cases also available.



Cloud Platform Data Application, Advanced Reporting Software, Calibration kits and other accessories are available from GrayWolf. View them online at:

graywolvesensing.com/accessories/



Distributed by:
Suntech Instruments Co Ltd
Tel: 35257168 Fax: 35252177
Email:sales@suntech-hk.com www.suntech-hk.net

GRAYWOLF SENSING SOLUTIONS
Annacotty Industrial Park, Unit 1C
Annacotty, County Limerick