

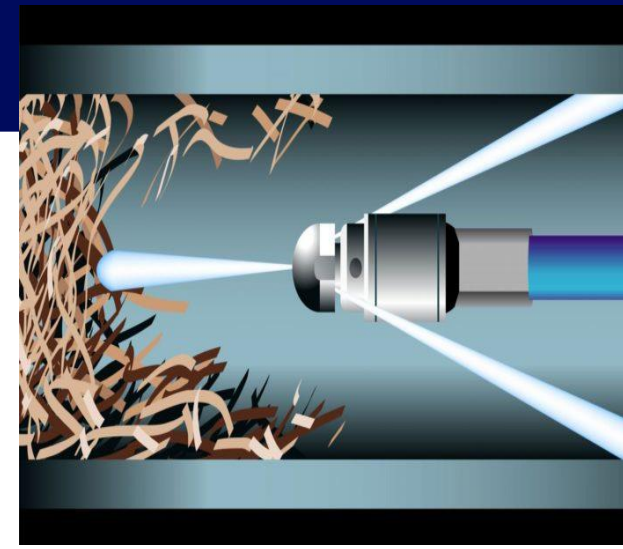


**SUPPORT STEPS**  
INDUSTRIAL SERVICES

**SUPPORT STEPS INDUSTRIAL SERVICES**

**ESTABLISHMENT KHATWAT DEM FOR  
GENERAL CONTRACTING COMPANY**

**COMPANY PROFILE**





**SUPPORT STEPS**  
INDUSTRIAL SERVICES

## CONTENT TABLE

- About Us
- Our Services
- Our Vision
- Our Mission
- Our Values
- Committed To Safety
- Quality Policy
- Organization
- Contact Us





**SUPPORT STEPS**  
INDUSTRIAL SERVICES

## ABOUT US

Support Steps Industrial Services operates in various business Industries – Mech. Maintenance, Chemical Cleaning, Shutdown, General Contracting & Trading, Project Management, Manpower & Equipment Rental Supports and aims to be leader in providing value added services & products. We have diversified industrial experience in Oil & Gas, Fertilizers, Petrochemicals, Mining, Heavy industries projects/ Maintenance. Our staff are highly skilled and professionals with track record in business domain and technical know how. That gives us an edge to understand and deliver.





## SERVICES

- 1) Industrial Cleaning
- 2) Mechanical Works
- 3) Chemical Cleaning
- 4) Bolt Torquing & Tensioning
- 5) Flange Facing & Cold Cutting
- 6) Re Tubing
- 7) Hydro jetting Machine
- 8) Skilled & Specialized Manpower Support Services & Equipment Rental
- 9) Hydrotest Services & Flange Weld Testing
- 10) Fabrication & Welding Services
- 11) Sea Fastening Welding
- 12) Nitrogen (N2) Parching
- 13) Steam Boiler
- 14) Material Supply

### **General Contracting :**

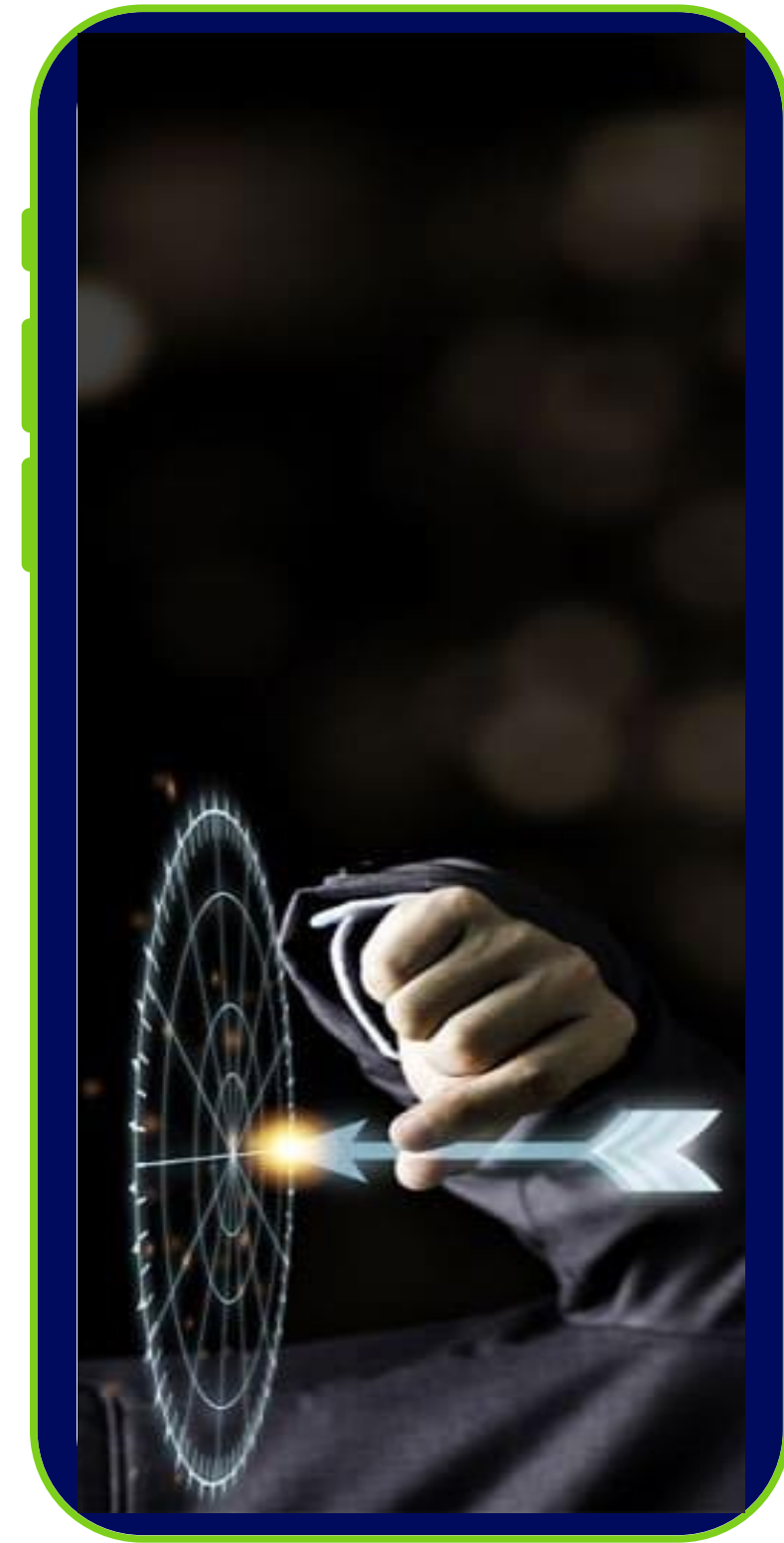
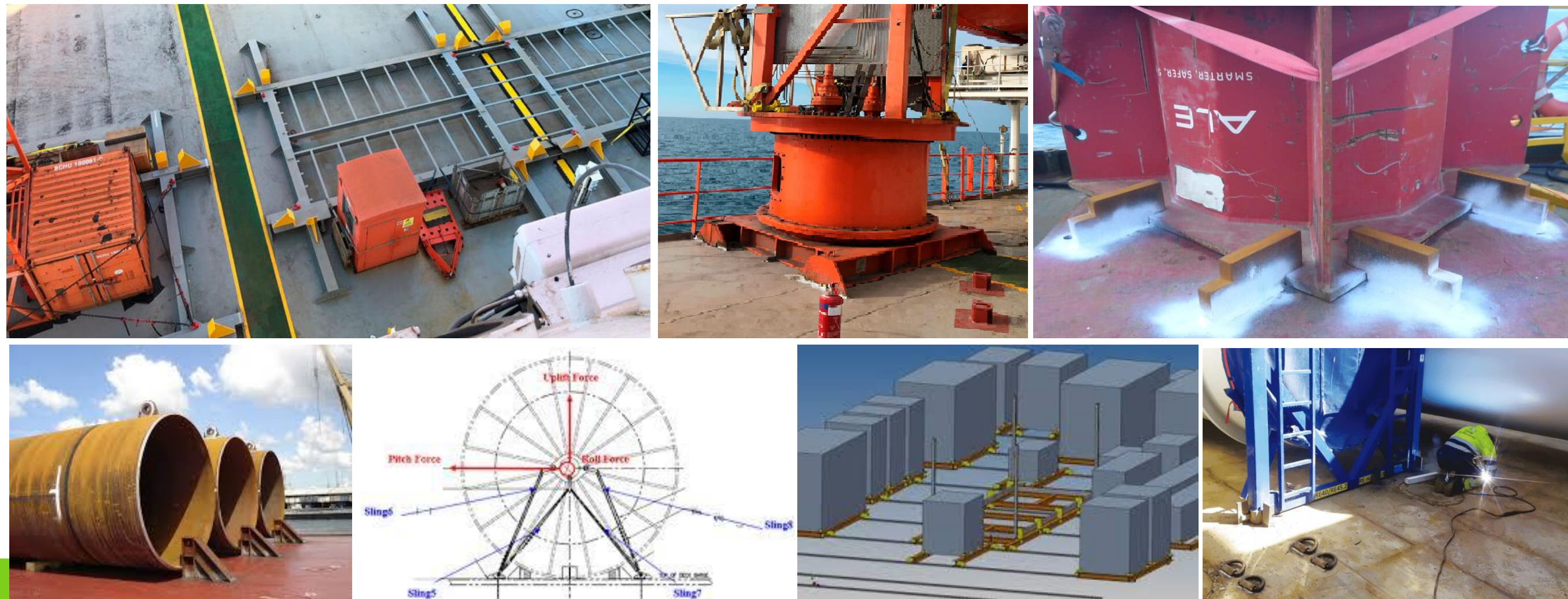
Engineering Support, Execution of Projects, Maintenance works, Manpower Supply



## SERVICES

### Sea Fastening fabrication, installation & Welding

Support Steps provide services the latest fabrication and welding techniques to engineer components and Installation & Removing Sea Fastening, Gas Cutting, Grinding, Gouging and Maintenance .





**SUPPORT STEPS**  
INDUSTRIAL SERVICES

## EQUIPMENT RENTAL

S NO.	EQUIPMENT NAME	TECHNICAL SPECIFICATION
1	CRANES	50 TO 500 TON
2	AIR COMPRESSOR	UP TO 1200 CFM
3	BOOM TRUCK	10 TON
4	DIESEL TANKER	UP TO 5000 LTR
5	TOWER LIGHT	6KVA
6	FORKLIFT	UP TO 10 TON
7	GENERATOR	60, 100, & 150 KVA
8	HALF LORRY	4 TON
9	HIGH BED AND LOW BED TRAILER	40 FT
10	POWER WASHER	3000 PSI
11	WATER TANKER	30 M3
12	WELDING MACHINE	400 AMPS
13	AERIAL BUNDLE PULLER	45 AND 65 TON
14	TRUCK BUNDLE PULLER	UP TO 20 TON
15	SUPER SUCKER WET & DRY	12 M3
16	VACUUM TANKER	30 M3
17	HYDROJETTING MACHINE	10K, 15K, 20K, 40K PSI
18	BOLT TORQUING & TENSIONING	UP TO 4.1/2"
19	MECHANICAL TUBE CLEANING	PNEUMATIC OPERATED
20	ROTARY PIPE CLEANING DEVICE	20K PSI
21	DEWATERING PUMPS	6", 8" OF 380 M3/HR TO 540 M3/HR
22	CIRCULATION PUMP	120, 250 & 400 M3 / HR
23	SUBMERSIBLE PUMP -PNEUMATIC OPERATED	FLOW -850 L/MIN TO 1150L/MIN
24	DIAPHRAGM PUMPS(METALLIC & NON-METALLIC)	2" , 3" & 4" WITH MAX. FLOW -549 LPM



## OUR VISION

The vision of Support Steps Industrial Services is to continue the heritage of our company and be a premier Saudi Arabia's one of the top company. We dedicate ourselves to be the leading technology partner for downstream sector of oil and gas and engineering industries.





**SUPPORT STEPS**  
INDUSTRIAL SERVICES

## OUR MISSION

Our mission is to Provide and develop the services to our clients by introducing new technologies to the global standards. We will always strive to satisfy client needs with cost effective, time optimization and long- term solutions with the utmost integrity and focus on continual improvement on the services offered.



**MAINTENANCE  
REPAIR AND  
OPERATIONS!**

MISSION



**SUPPORT STEPS**  
INDUSTRIAL SERVICES

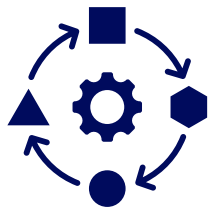
## OUR VALUES



### **Trustworthiness:**

Our Reliance on our Roles and responsibilities embodied with trust & honesty makes the basic fabric of our business deals.

### **Adaptive:**



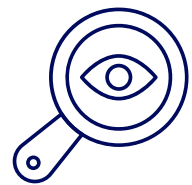
In ever changing ecosystem and business environment, we make quick adaptation to sustain and deliver outcomes.

### **Collaborative:**



Engaging and achieving more as team mind set is our Mantra for incremental growth in complex supply chain networks.

### **Transparency:**



Maintaining credibility and respect with customers to communicate and build relationship is our Mode to operate.





**SUPPORT STEPS**  
INDUSTRIAL SERVICES

## COMMITTED TO SAFETY

Our basic principle is to ensure a safe and healthy environment for our employees. We're committed to providing mandatory PPE to all our employees in compliance with the minimum required standards of our clients. We ensure a safe and healthy workplace to avoid accidents, injuries, and illnesses.



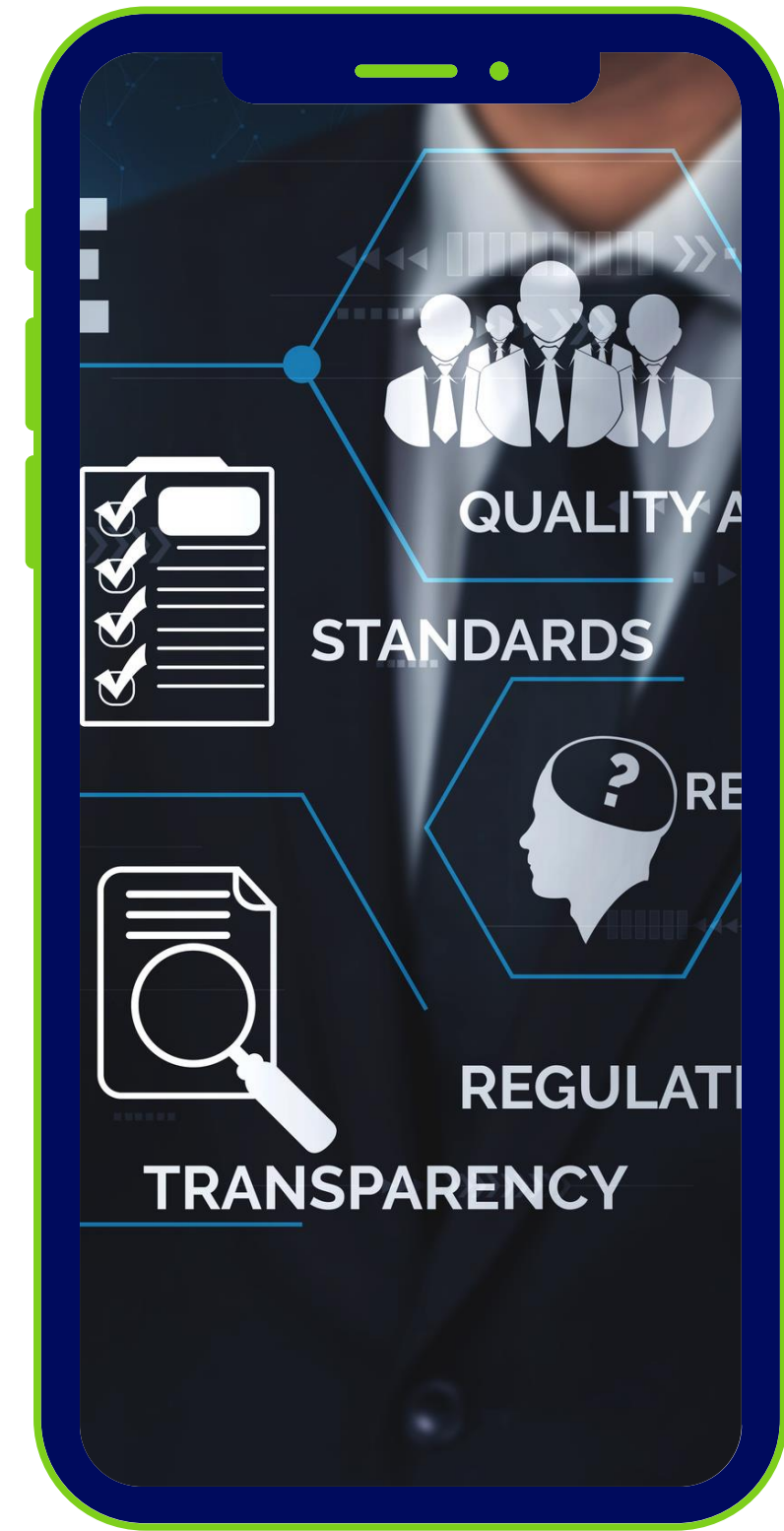


**SUPPORT STEPS**  
INDUSTRIAL SERVICES

## QUALITY POLICY

We are committed to provide quality services and products to our customers and in order to achieve this.

- We practice an assurance approach in implementing quality management system procedures to deliver products and services complying to regional, national and international codes and standards.
- Effectively communicate the quality policy to our employees and other channel partners and provide them with training for complying to the best practices.
- Under a framework provide a mechanism for Plan, Do, Check and Act to bring about continuous improvement in our business processes and services.
- Establish a mechanism to see customers feedback and address issues on

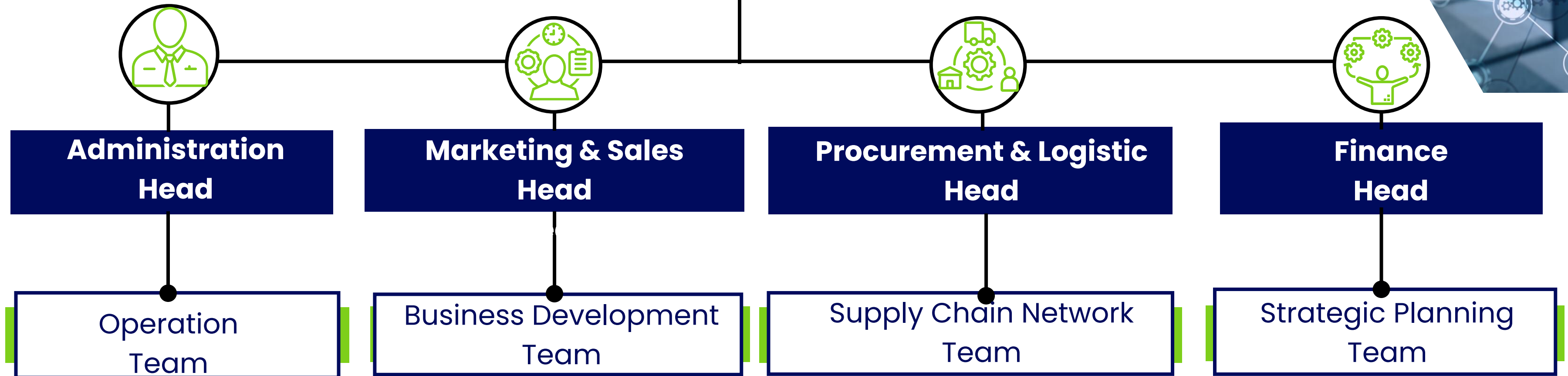




**SUPPORT STEPS**  
INDUSTRIAL SERVICES

## ORGANIZATION

**Business Owner's**





**SUPPORT STEPS**  
INDUSTRIAL SERVICES

## CONTACT US

Feel free to contact with us. Below are some channels to contact with us.



[info@sps24services.com](mailto:info@sps24services.com)  
[sa3dvp@gmail.com](mailto:sa3dvp@gmail.com)



+966055 802 5872



Jubail, Saudi Arabia





**SUPPORT STEPS**  
INDUSTRIAL SERVICES

**THANK YOU**  
*INTEGRATING GROWTH*

