

Mining production and maintenance teams require reliable data and reporting tools.

Mining Art developed AUXIL as a cost-effective solution aiming to overcome a lack of:

- production data and no real-time control on field equipment.
- proper communication between field and office personnel.
- historical information and reporting for effective production decisions.

Primary collected data:

- Time Usage Metrics - Availability, Use of Availability, Utilization with the detailed information about each delay or down event.
- Production cycles with performance metrics (hang, queue, spot, load, etc) and detailed context - material, grade, operators, loading/dumping locations, etc.
- GPS position and traveled distances.
- Fuel consumption.
- Engine hours.
- Tires usage.

However, Fleet Management System (FMS) main goal is to make any production transparent by reliable data, AUXIL provides modules to improve real-time control and operation -

- Dynamic task assignments.
- Fueling/Shiftchange optimization.
- Material Blending.
- Pre-start checklists.
- Components tracking.
- Machine guidance for drills and shovels with high-precision navigation.

AUXIL integrates with onboard equipment controllers (VIMS, VHMS, Cense, Contronics, RCS, etc) to further extend data analysis and improve real-time control and automation.

Tire pressure measurement system integration is also supported.

AUXIL uses a serially produced onboard computer (Advantech, Ruggon, Winmate, Nexcom) that can be easily purchased and supported all around the world. Computer allows not only to connect any industrial interface (CAN, COM, J1939, DI) to collect information from onboard telemetry controllers, but also supports various types of wireless communication: LTE, WIFI, Bluetooth. Integrated NFC reader simplifies operator registration on equipment.

AUXIL enables safer production by the equipment speed, operator fatigue and restricted area control modules.

Key Product Benefits

- From-the-shelf hardware with OEM 2 year warranty that simplifies the original purchase and further support. We encourage our customers to procure onboard computers for the project themselves.
- AUXIL is developed on technologies (Javascript, Python) that allow fast and efficient system adoption to the mine needs. AUXIL code is open for customizations.
- Web-based applications for both field and office personnel.
- APIs to integrate with other mine systems.
- Low requirements for server infrastructure and no need for 3rd party auxiliary licences.
- All-in-cost per unit including hardware, software licenses and all project services is **5000 - 6000 \$** depending on the final scope. Estimation calculated for 30 unit project;
- Technical support - no recurring services fees. Mine pays for the completed support activities based on hourly rates.

EQUIPMENT OPERATOR GUI



Onboard AUXIL application enables interaction between equipment operator and Central. GUI is highly customizable to meet any customer requirements.

Operator Hüseyin Han **SOS**

Equipment 47-122 **8:08**

State **READY** from 7:56 (13 min.) **Cycles:0**

Reason Üretim

GPS: Speed 0.03 km/h

Fueling 997l. Weight 100 t.

Tires pressure 126 127
128 132 127 127

Menu **Full** At: 46-201
In:3 min. empty

Operator Hüseyin Han **State** **Exit**

Real time Hüseyin Han

Reports Messages **Map**

Enghrs Prestart **Spillage**

Settings Speed 0.04 km/h

Weight 124 t.

Tires pressure 126 127
128 132 127 127

Menu **Full** At: 46-201
In:2 min. empty

19:03

Cycles:21

Time Login	Operator	First Load	Last Load
2020-11-11 08:50:40	Трохим Виктор Вячеславович	2020-11-11 09:05:30	2020-11-11 18:58:28

CYCLES **21** Status Data Quality, % **100** Cycles Data Quality, % **100**

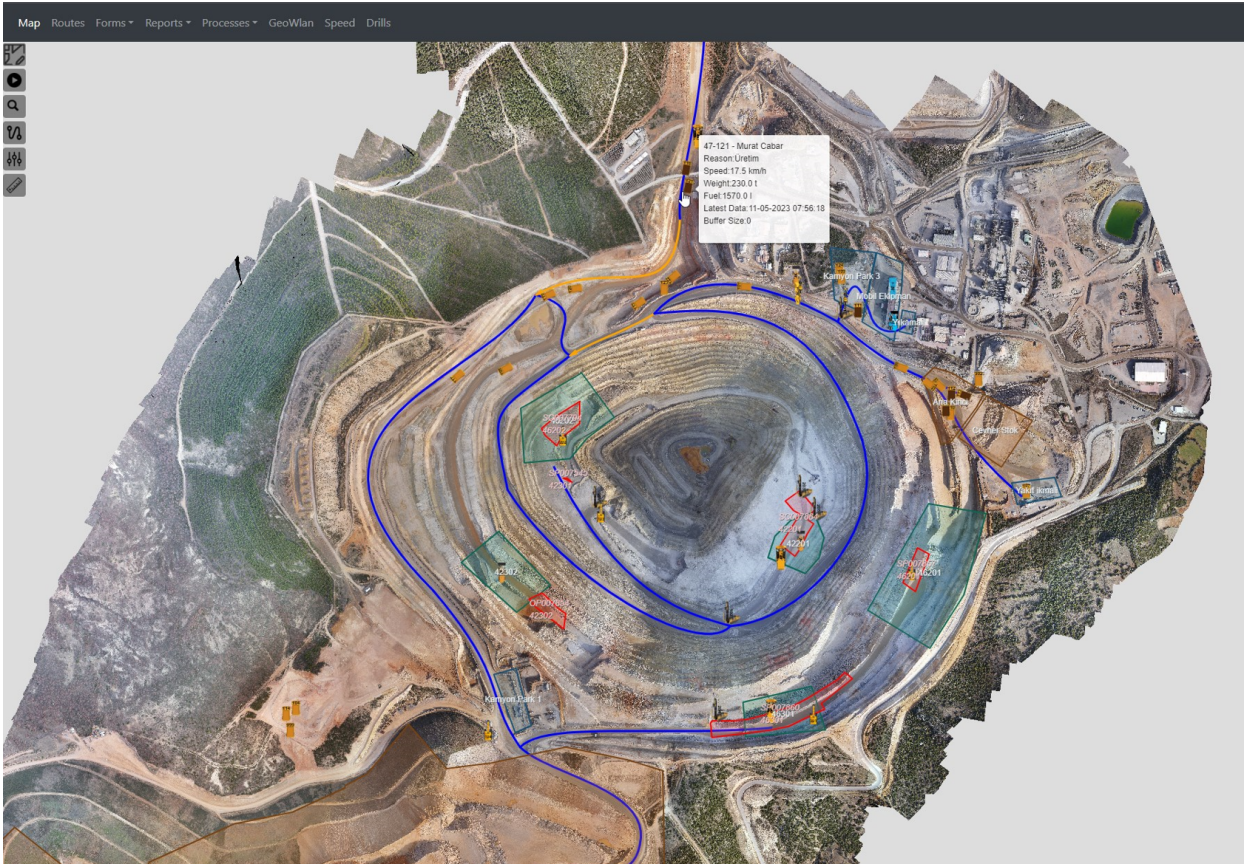
Routes			Cycles		
Show	Dump	Cycles	Show	Dump	Cycles
11	КМС.Отвал 2	8	50	КМС.Отвал 2	4
11	Мастерская	1			
4	КМС.ПП.2	5			

Menu **First Bucket** At: 50
In: 4 m.



AUXIL provides 2 primary applications for dispatcher - **PitMap** and **PitRoute**

PitMap represents current mine configuration where dispatcher defines loading/dumping locations, road network, polygons for objects and tracks current equipment position and state.



PitRoute represents the current state of all equipment in a schematic way in accordance with the production cycle. Together with PitMap it allows to effectively control and manage mine operation.

Ready trucks	Status Quality	Uncounted cycles	Cycles Quality	Cycles	Expit, m3	Waste, m3	Ore, t	Tk Avail	Tk UoA	ТРОН
9	93%	0.9 %	77%	213	9169	7124	6852	0.83	0.77	246

Pit Name_hidden	Equipment	Location	Destination
	EX29 0 сам-в 998t/h Морена	T40	КМС_Отвал 2
	EX4 2 сам-в 1900t/h Рука	T71	КМС_ПТЛ2
	EX11 1 сам-в 3403t/h Морена	T27	Печетубский
	EX15 3 сам-в 2195t/h Рука	T75	
	EX50 2 сам-в 2164t/h Порова	T89	

Exceptions (0 pending)

Accept Reject

Площадка: T74 T86

REPORTING



AUXIL has integrated web-based reporting with a set of standard reports. System is open for new reports development as well as integration with other mine reporting tools or BI systems.



Shovels productivity by shift hour

Shovel	Ore, t	Waste, t	Total, t	1	2	3	4	5	6	7	8	9	10	11	12
8	0	9175	9175	1735	2611	2867	1962	-	-	-	-	-	-	-	-
1	0	8494	8494	1894	2264	2265	2071	-	-	-	-	-	-	-	-
7	0	7410	7410	1835	1779	2151	1469	176	-	-	-	-	-	-	-
2	0	6733	6733	1851	2359	1975	548	-	-	-	-	-	-	-	-
3-92	4539	415	4954	1072	1067	1597	1218	-	-	-	-	-	-	-	-
42	401	2116	2517	805	663	654	395	-	-	-	-	-	-	-	-
36	1948	0	1948	525	509	386	528	-	-	-	-	-	-	-	-
40	0	1617	1617	683	807	-	127	-	-	-	-	-	-	-	-

Shift: 2020-11-12 08:00
Current Time: 12:17:56



LLC Mining Art,
Georgia, Tbilisi,
Vake district, Paata Datuashvili str, N23

