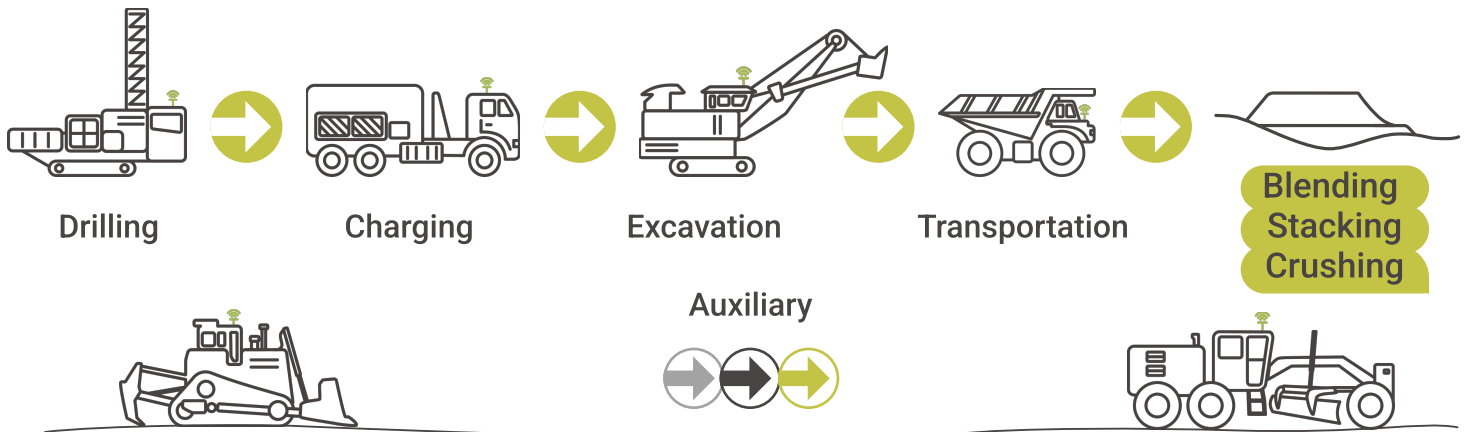


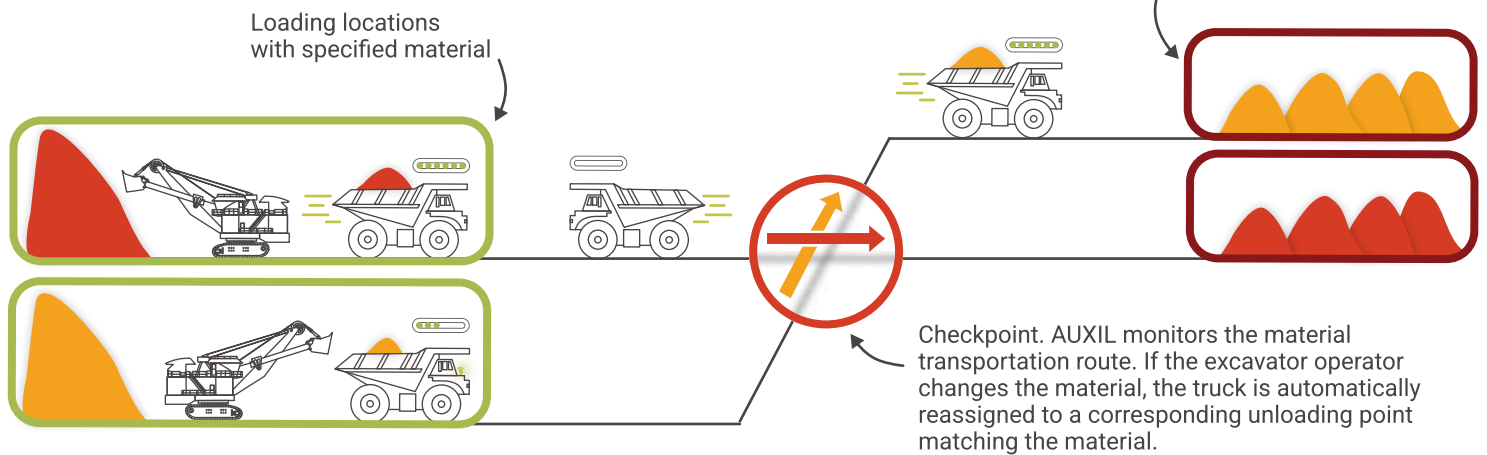
FLEET MANAGEMENT SYSTEM AUXIL



PURPOSES FOR QUALITY MANAGEMENT

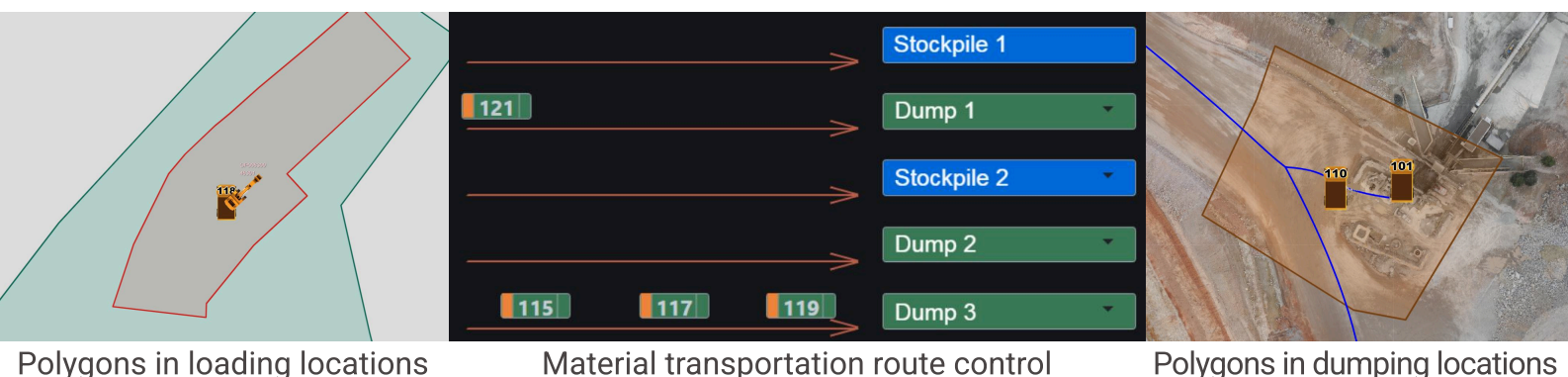
- Improving the quality of the end product
- Reducing losses and dilution through transportation control
- Monitoring material transportation routes

AUXIL monitors material transportation and automatically manages blending.

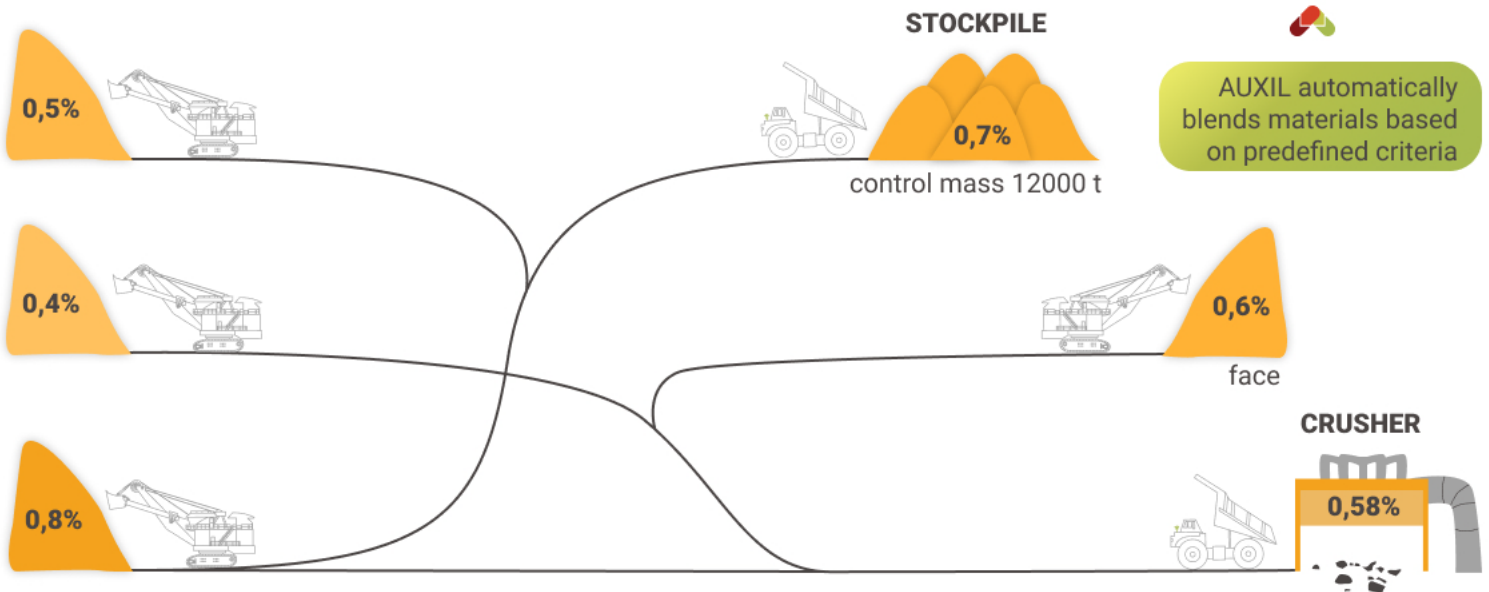


- ➡ The system configures the material and its quality for each excavation site and unloading point. It automatically assigns trucks to loading and unloading locations
- ➡ AUXIL monitors truck movements 24/7. In case of route deviations, the system notifies both the dispatcher and the truck driver
- ➡ Automatic material blending in the required proportions at unloading points
- ➡ The type of extracted material and its weight are recorded using the truck's payload system
- ➡ Reports with up-to-date data

AUXIL INTERFACE

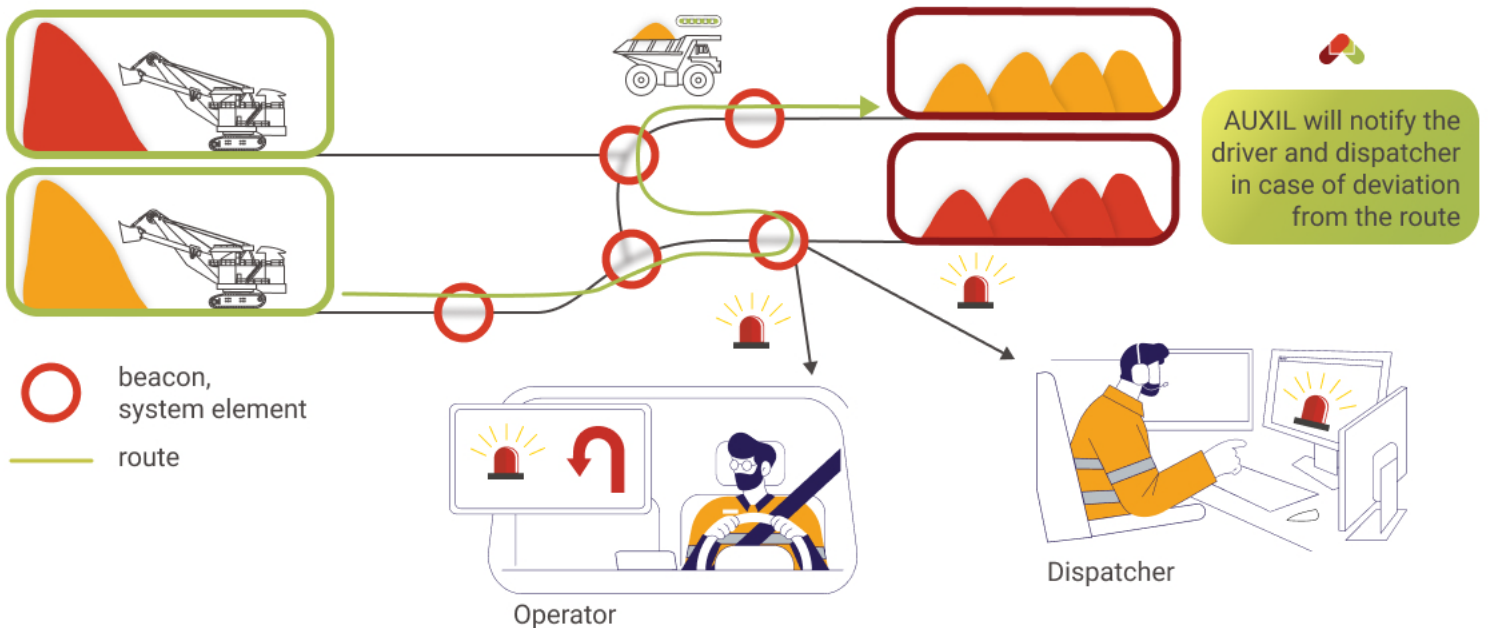


AUTOMATED BLENDING



➡ Trucks can operate freely with any excavator without locks

REDUCTION OF LOSSES AND DILUTION



MINING ART

- **Availability** - We use hardware in our solutions that are openly available on the market, which reduces the overall project cost and simplifies subsequent maintenance.
- **Reliability** - All equipment comes with a manufacturer's 1-2 years warranty. Our software meets 99.9% SLA requirements.
- **Flexibility** - Our software is open to modifications tailored to your business needs. You can make adjustments independently.
- **Transparency** - Forget about subscription fees for technical support and services. You pay for the provided services only.
- **Experience** - We've been in the industry for nearly 10 years and deliver results, not just systems.