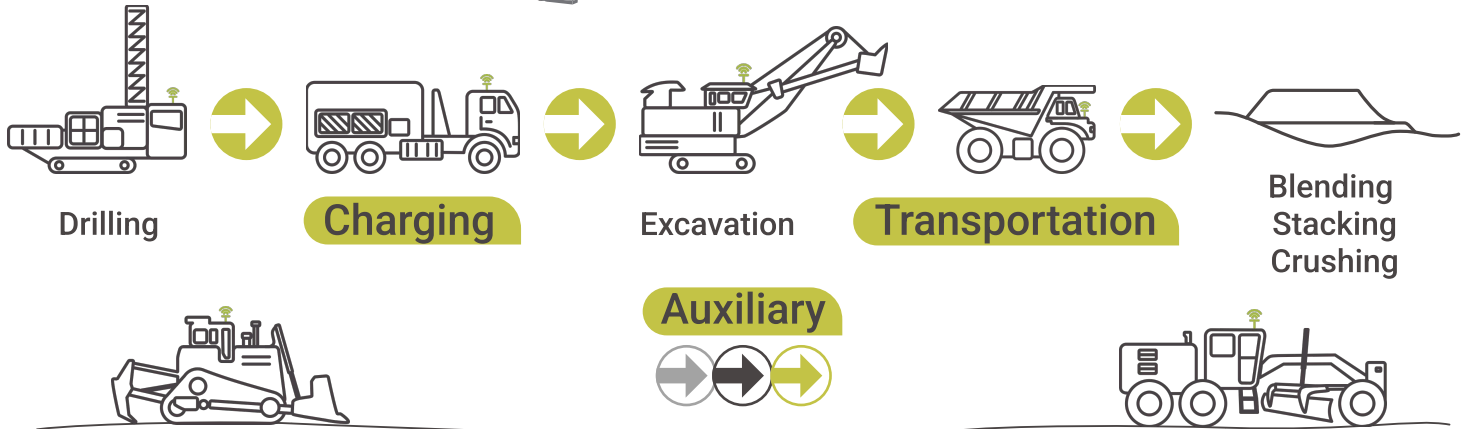


# FLEET MANAGEMENT SYSTEM AUXIL



## OPERATOR SAFETY SYSTEM

### PURPOSES

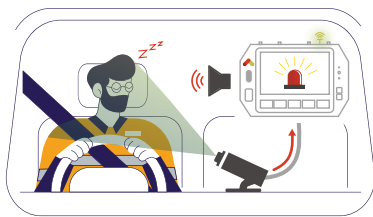
- Improving mining safety through fatigue monitoring
- Reduction of loss-of-control incidents
- Reduction of mining operational costs

➔ High-quality system alerting. The system tracks the trend and triggers an alert at the specified fatigue threshold

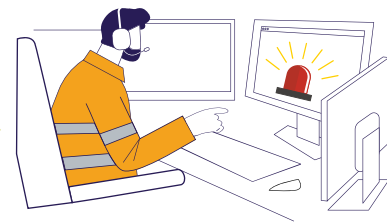
➔ False alarms are minimized

➔ Reporting on incidents and the dynamics of 'micro-sleeps'

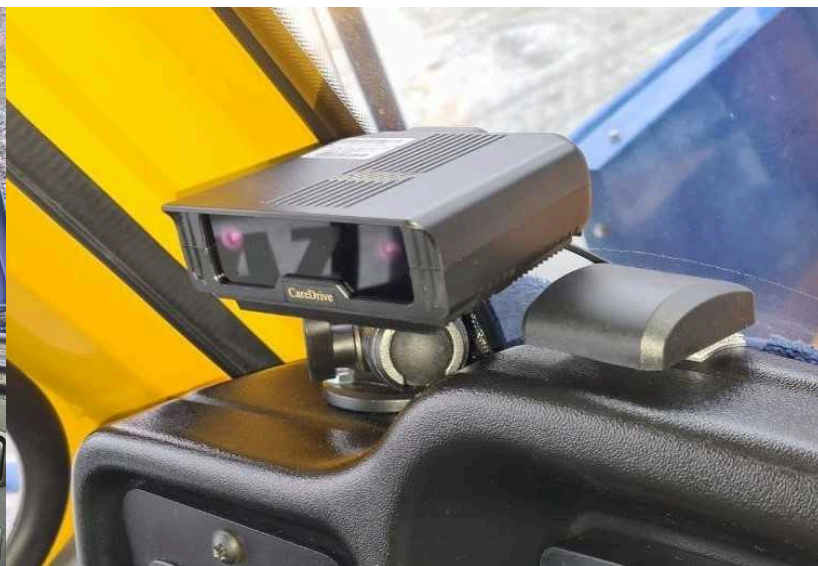
➔ Reporting on discipline violations (unfastened seat belt, use of a phone while driving)



Operator



Dispatcher



Camera installation

Map Routes Forms Reports GeoWlan Speed Fatigue Processes Drills Loading Events Components Help center Log out

Time range: from 2025/ 20:00 to 2025/ 20:00

Equipment units: All (44)

Event type: Fatigue


Review status: All (3)

Fatigue level: All (3)

Only with video  
 Auto update  
 System events

ID	Time start	Type		
T30	2025/ 20:31	Fatigue		
T30	2025/ 20:31	Fatigue		
T38	2025/ 22:03	Fatigue		
T38	2025/ 01:10	Fatigue		
T38	2025/ 01:11	Fatigue		
T38	2025/ 03:03	Fatigue		
T66	2025/ 03:16	Fatigue		
T66	2025/ 03:16	Fatigue		
T66	2025/ 03:16	Fatigue		
T66	2025/ 03:17	Fatigue		

N: speed:15 km/h 212510



2025- 20:31:34

Equipment: T30 - 2025/ 20:31 Change event type Fatigue level: High

Operator: Operator Speed: 13 km/h

Confirm Reject Fatigue High

ID	Total	Video(%)	Fatigue	Confirmed
T29	36	0	0	0
T30	19	57.9	3	1
T38	53	82.8	11	1
T39	430	0	0	0
T35	2	50	0	0
T38	101	0	0	0
T37	82	0	0	0
T03	41	0	3	0
T32	6	66.7	0	0
T40	13	0	7	0
T46	42	42.9	0	0
T47	27	0	6	0
T48	135	4.4	0	0
T51	3	0	0	0
T53	3	0	0	0

Rows per page: 15 1-15 of 26

On the left is the field with the latest active events. In the center is the working menu with a priority notification for dispatcher processing. In the right window are the equipment units on which fatigue events are starting to be recorded. Filters at the top allow you to configure the required functionality

## COMPONENTS

- High-resolution industrial video camera.
- Cable for connection to the AUXIL system.
- Software for the server and the onboard devices.
- AUXIL system equipment with standard precision positioning.

### Fatigue monitoring

c 2026/02/20 19:50 no 2026/02/20 21:50

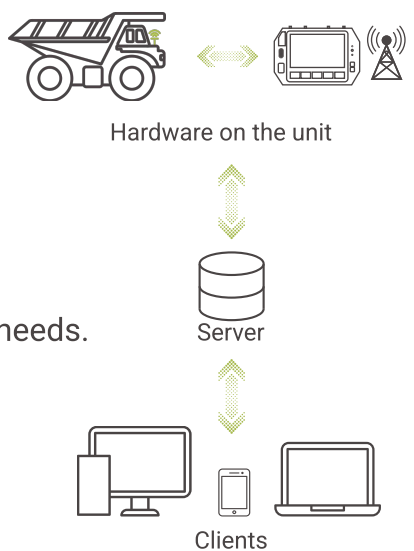
#### Area 1

T01 Under repair	T06 Under repair	T07 Under repair	T30 Fatigue: 0	T31 Fatigue: 0	T32 Fatigue: 2	T40 Fatigue: 1	T41 Fatigue: 0	T42 Fatigue: 0	T47 Fatigue: 0
T51 Under repair	T55 Fatigue: 1	T56 Fatigue: 0	T57 Fatigue: 0	T61 Fatigue: 0	T62 Fatigue: 0	T63 Fatigue: 0	T64 Fatigue: 0	T65 Under repair	T66 Fatigue: 0
T67 Fatigue: 0	T70 No connection								

#### Area 2

T03 No connection	T04 Under repair	T05 Fatigue: 0	T29 Fatigue: 0	T33 Fatigue: 0	T34 Fatigue: 0	T35 No connection	T36 Fatigue: 0	T37 Fatigue: 0	T38 Fatigue: 4
T39 Fatigue: 0	T44 Fatigue: 0	T46 Fatigue: 0	T48 Under repair	T50 Under repair	T52 Fatigue: 0	T53 Fatigue: 4	T54 Fatigue: 0	T58 Fatigue: 0	T59 Fatigue: 0
T60 Under repair	T68 Fatigue: 0	T69 Fatigue: 0	T84 Fatigue: 0	T85 Under repair	T88 Under repair	T90 Fatigue: 0	T91 Fatigue: 1		

### Dashboard with operator fatigue levels



## MINING ART – YOU PAY THE VALUE ONLY

- **Availability** - We use hardware in our solutions that are openly available on the market, which reduces the overall project cost and simplifies subsequent maintenance.
- **Reliability** - All equipment comes with a manufacturer’s 1-2 years warranty. Our software meets 99.9% SLA requirements.
- **Flexibility** - Our software is open to modifications tailored to your business needs. You can make adjustments independently.
- **Transparency** - Forget about subscription fees for technical support and services. You pay for the provided services only.
- **Experience** - Since 2015, we have been developing and implementing our own software solutions for the mining industry.