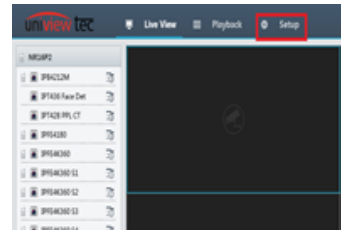


## ALARM USE ON NVR

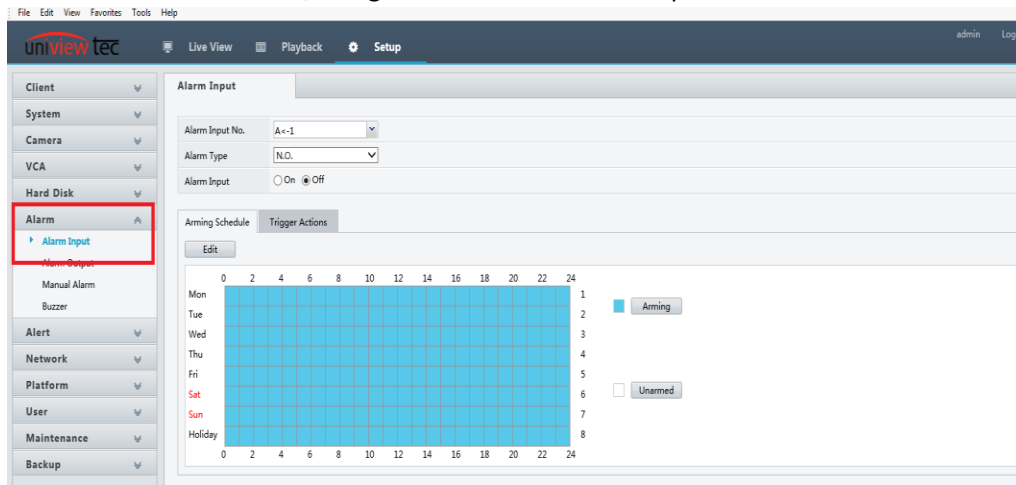
Alarms are used to trigger an event such as send an email, start recording, create an alarm indication in the recording time bar or change an alarm output to control something like a siren, strobe light or release a door strike.

### USING ALARMS WITH BROWSER INTERFACE

First load the recorders web login in Internet Explorer. Remotely this can be done through star4live. Locally this can be done by typing the local IP address of the recorder into the URL bar. Once you have access click on the “Setup” tab.

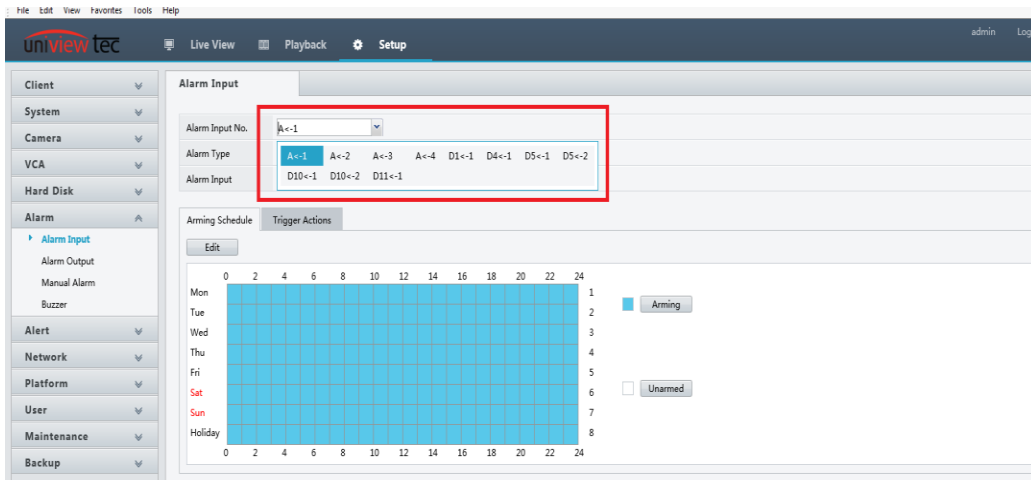


Once you have accessed the menu, navigate to “Alarm > Alarm Input” on the left hand menu.



### ALARM INPUT

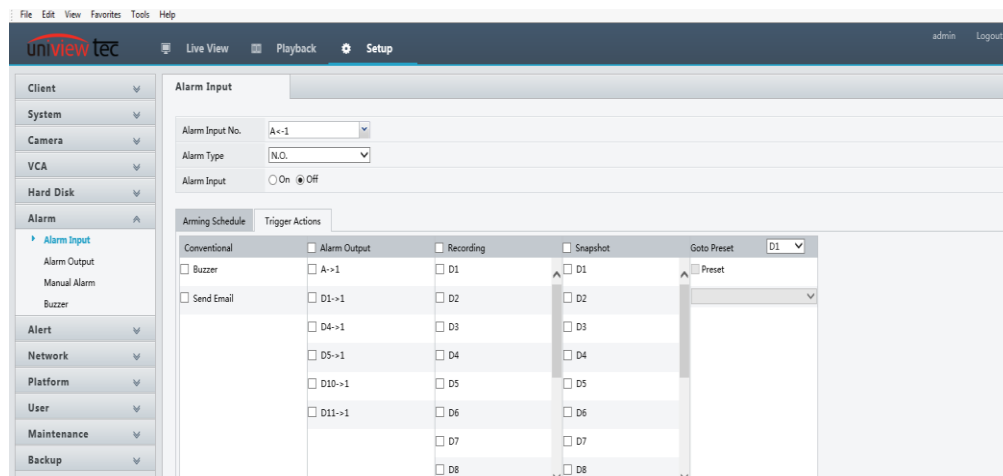
Alarm inputs will need to be setup in order for the recorder to “trigger” events. Once in the Alarm input menu the first option will be to select the Alarm input number that you want to change. Alarm numbers that are in format “A <- (#)” are for the recorders alarm input on that channel. Alarm numbers that are in format “D <- (#)” are alarms for attached cameras.



The next Alarm input menu option is going to be “Alarm Type”. In this drop down the two options are “N.O. and N.C.” where N.O stands for Normally Open and N.C. stands for Normally Closed. This option will be determined based off of your needs. For example a door contact that will trigger an event when the door is open would be a N.C. circuit because the door contacts are normally “closed (connected)”. An input such as a light switch or push button would usually be a N.O. circuit. When the switch is off the circuit is not connected (normally open) and once the circuit is connected (closed) the switch triggers the event.

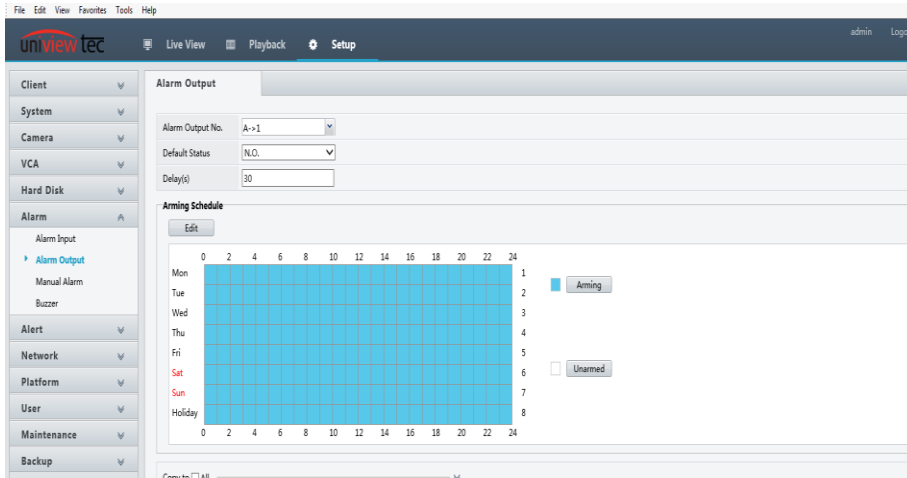
The next Alarm input menu option is On and Off, any alarm inputs that you want to use make sure this setting is set to on.

Arming Schedule will be the next option that you want to set up. The arming schedule can be set so that the alarms only trigger at certain times of the day. Up to 8 different periods can be set for each day. The last options to set will be under the “Trigger Actions” tab. The options you will have in here are buzzer / send email (or both), activate alarm output, start event recording, snapshot, and call a PTZ preset. These settings will be set based on the reaction you want the recorder to have when the alarm is triggered.



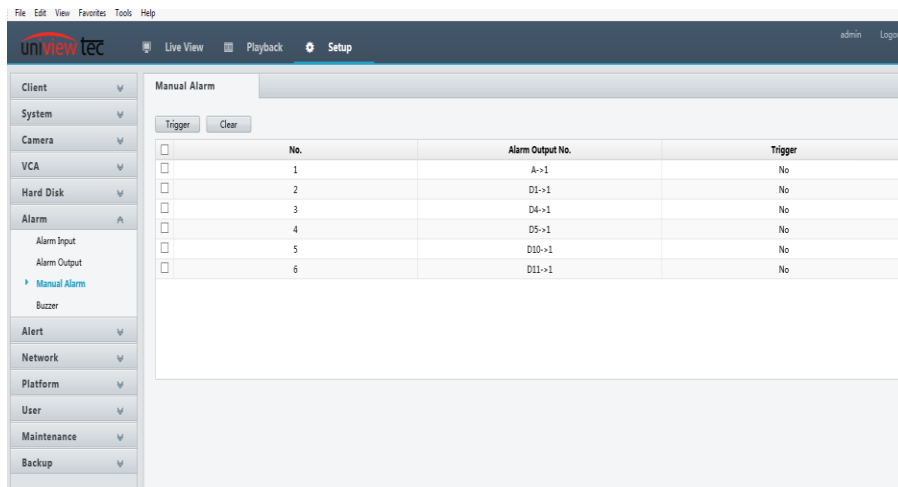
## ALARM OUTPUT

Alarm Output can be used to trigger another device to perform an action. Any device that can be controlled by a switch can be controlled by the alarm output. For example if a camera perceives that motion occurred it can trigger Alarm Output 1 which then could then allow power to a siren and / or light. The settings for Alarm Output are N.O or N.C. states, and Duration (in seconds). The Duration will allow you to set how long the external device will be triggered.



## MANUAL ALARM

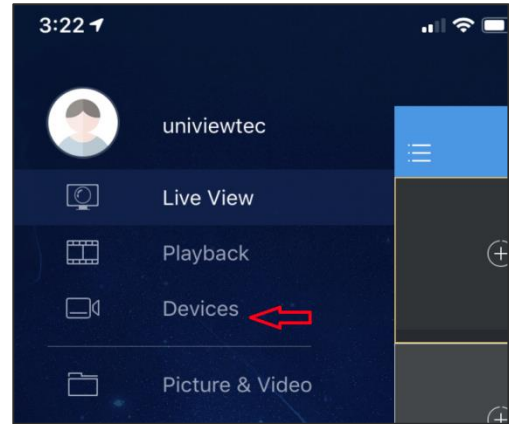
Manual Alarm allows you to directly trigger an alarm output. To manually trigger an alarm check off all the desired alarm outputs from the list and then click the trigger button in the upper left corner of the menu.



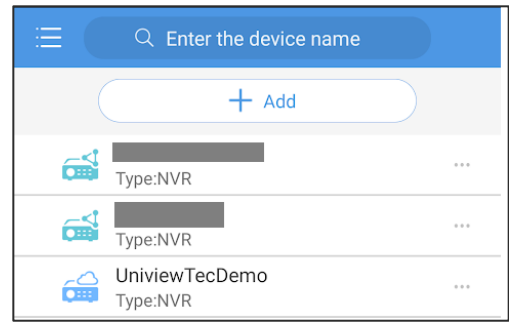
## USING ALARMS WITH GUARD VIEWER

### ALARM OUTPUT

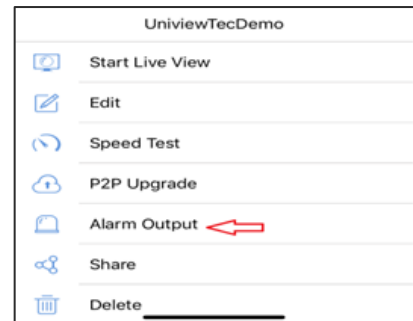
Once the Guard Viewer app has been installed and an NVR has been setup navigate to the main menu by tapping on the three lines in the upper left hand corner. Next tap on Devices.



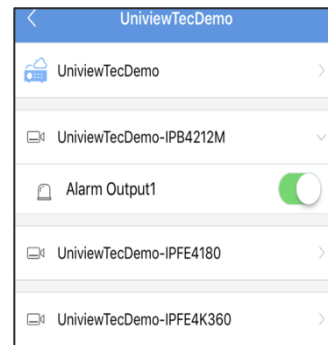
Tap on your NVR in the device list.



A small menu will pop up at the bottom of the screen with the option "Alarm output".

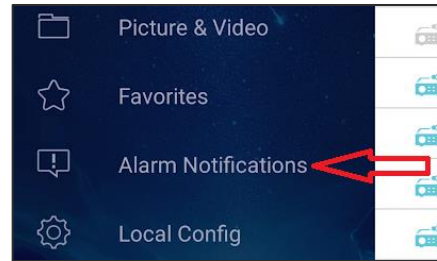


Once in the Alarm output menu you will be able to manually enable alarm outputs on your NVR as well as connected cameras.

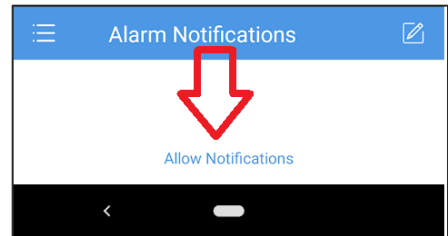


## ALARM NOTIFICATIONS

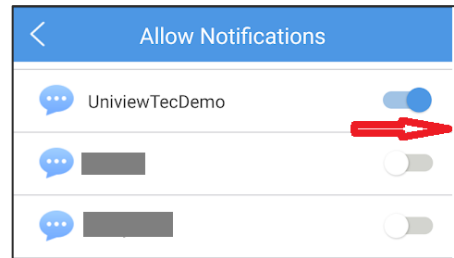
Under the Main Menu there is an option for “Alarm Notification”.



Tap on Allow Notifications at the bottom of the screen.



Swipe the site to the on position.



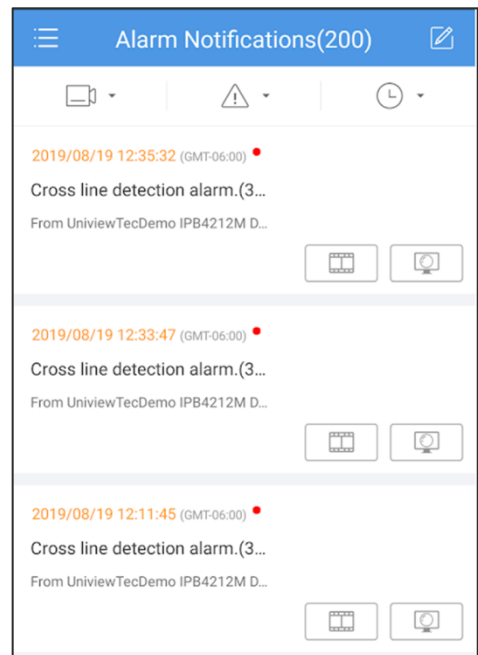
Once enabled navigate back to the main menu and then to Allow Notifications. The NVR alarm events will be listed along with the ability to see...

live view 

or

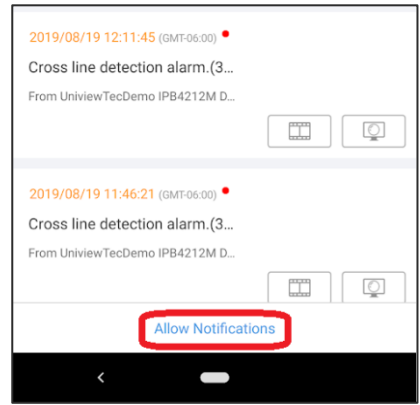
playback 

for this alarm.



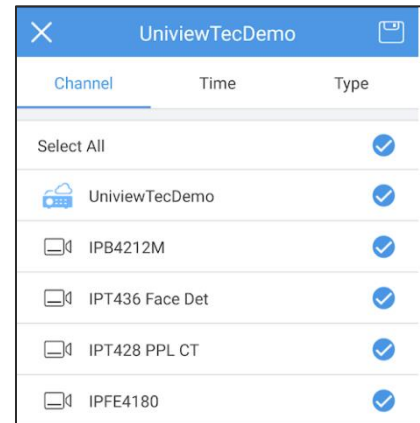
## ADVANCED SETTINGS

Advanced settings can be used to filter or limit notifications received. On the Alarm Notifications screen tap Allow Notifications at the bottom of the screen.

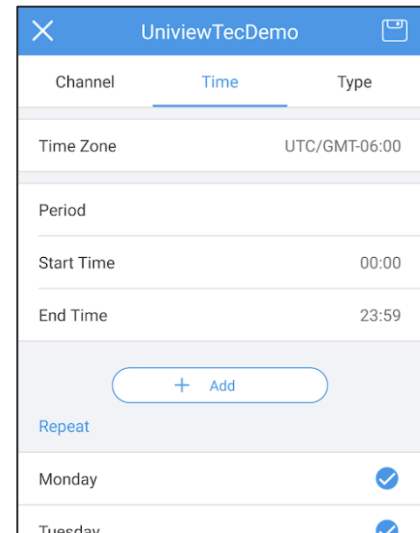


It can limit...

... which cameras on the NVR will provide a notification.



... when the notifications will be received



... which types of events will create a notification alert.

