

GUEST INFORMATION

THE ALMHAUS





Dear friends,

welcome to our beautiful Almhaus at the Teichalm.

We've made every effort to create a cozy and relaxing atmosphere in our house for you and hope you will spend relaxing days here with us. We kindly ask you to take care of our house and leave the house in the same condition that you would like to find it in yourself. .

We wish you a pleasant stay,

Beate & Michi



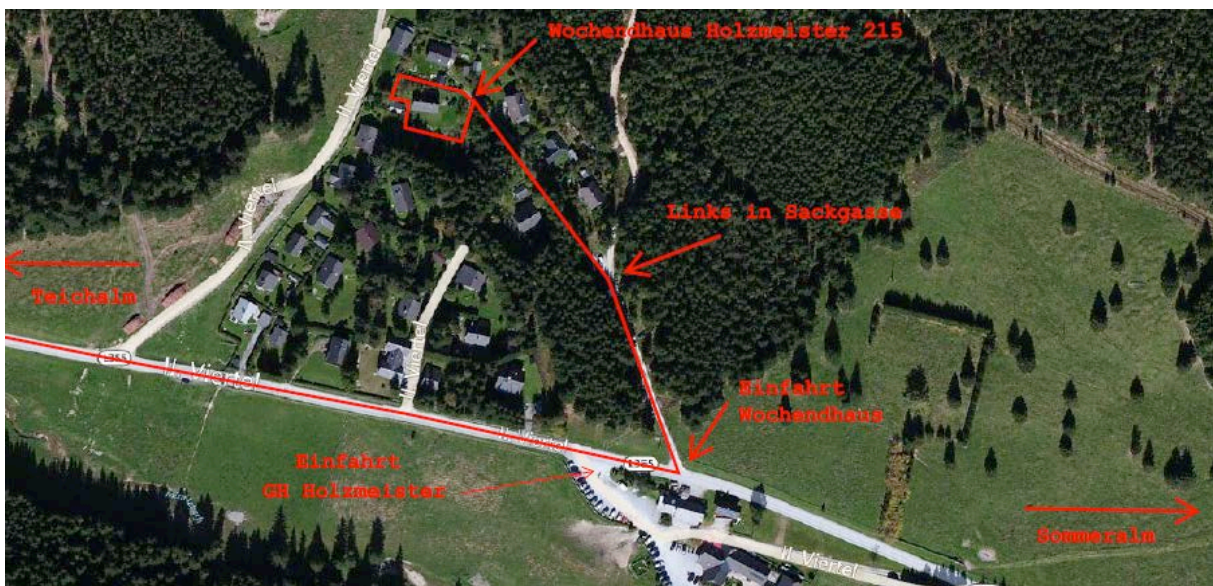
Anreise

Von Graz:

Graz Richtung Bruck an der Mur. Abfahrt Mixnitz, Birkfeld, Breitenau, Teichalm, Sommeralm durch die Gemeinde Breitenau am Hochlantsch, Richtung Teichalm/Sommeralm.

Von Wien:

Bruck an der Mur Richtung Graz. Abfahrt Mixnitz, Birkfeld, Breitenau, Teichalm, Sommeralm durch die Gemeinde Breitenau am Hochlantsch, Richtung Teichalm/Sommeralm.



general Information



KEYBOX

Please find the keys in a box behind the garden house. On arrival, we will send you a code per sms to open the box. We request you to leave the key in the box before leaving.

PARKING SPACE

Please find three (max. 4) parking spaces in front of the house. Please do not block the house entries of our neighbours.

ALARM SYSTEM

The alarm system is controlled automatically by us.

WIFI

Unlimited WIFI

WIFI Password: 111 79 89 4

SMOKING PERMITTED

Smoking is absolutely not allowed in the house. Please use the balcony or terrace for smoking.

FIRST-AID BOX

A small first-aid box is attached in the lounge area (TV room). Another first-aid kit is in the storage room.

Emergency: 144 // Doctor: 141

PETS

Pets are not allowed.

STOVE

Please just use the oven by supervision. After using the stove, please dispose the ashes in the provided container outside. To burn waste or other (plastic, etc.) is prohibited!

!!DANGER!! The stove (old cast iron stove) is burning hot - risk of burns (especially with children).

TRASH

Full garbage bags can be taken or stored in the garden house before departure. There are no dumpsters in the Almenland. Please find enough fresh garbage bags in the storeroom for free.



general Information



ELECTRICITY

The fuse box is located in the entrance room on the opposite side of the front door. You will find it behind the picture with the fox.

WATER

The main water valve can be found in the toilet on the lower left side of the toilet. Generally, the main water never has to be turned up or down.

KITCHEN

Please just place dishes, pots and cutlery back in the cabinets in a clean and dry condition. The kitchen is generally fully equipped and contains enough dishes for 8 people.

Info's features:

- e-stove
- fridge
- dishwasher
- egg boiler
- toaster
- Nespresso machine
(capsules to bring your own)

CHARCOAL BARBECUE/GRILL

A charcoal grill is available. Coal, lighters etc. are to bring your own.

NOISE (OUTSIDE)

Please respect the night-rest (especially for the balcony) from 10.00 p.m. to 7.00 a.m. All the neighbors are very nice and approachable.

DAMAGE

It can happen - please let us know during your stay - most of it can be repaired or is replaceable.

RENEWAL / EXTRAS

We would be glad if you would leave the house in the condition as you found it. This refers to leaving the house in a generally clean state (kitchen, etc.). The final cleaning will of course be done by us.

On departure please remove the sheets from the used beds and put it on the bed. Please leave unused bed sheets.



Heating & hot water



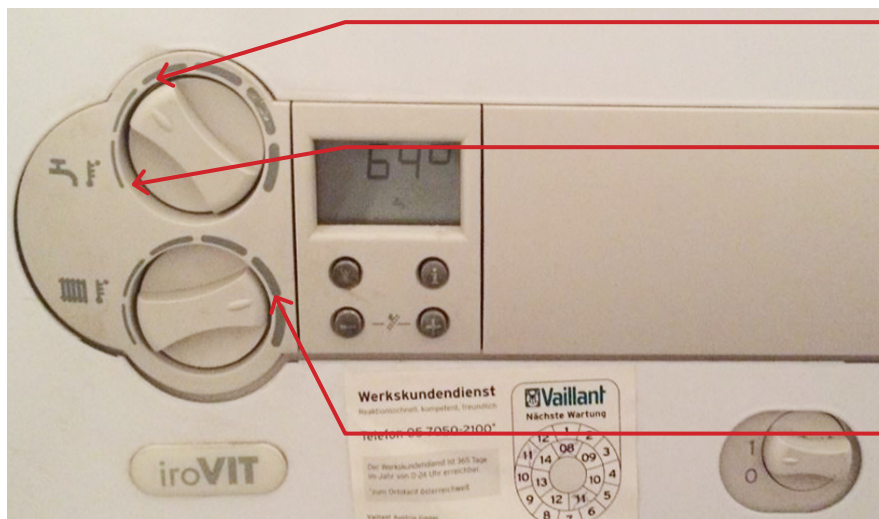
HEATING

The heating is regulated automatically. On arrival it is set on 21 degrees. The temperature can be changed via the control panel in the entrance room. This manual temperature change lasts for 12 hours. Then the thermostat automatically returns to 21 degrees.



HOT WATER

The hot water is to be switched on in the heating room at the oil heating. Upper wheel! The hot water boiler (hot water temperature display) is located in the storage room. The boiler contains 300l and therefore sufficient water for 6 - 8 people.



Hot water needed - set to about 55 degrees. Duration about 2 hours.

If no hot water is needed - set to 0 degrees.

Flow temperature heating - 60-65 degrees (xe setting)



Check In & Check Out



CHECK IN

- Key in the key box
- Alarmsystem already deactivated (by us)
- Heating on 22 degrees
- Turn on hot water

CHECK OUT:

- Alarmsystem activated (by us)
- Heating will reduce automatically
- Turn off hot water
- Leave kitchen clean
- Remove used bedsheets
- Control if cooker is turned off
- Turn off all lights
- Turn off floor heating in the sauna building
- Lock the sauna building
- Close the entry
- Put the key back in the box
- please inform us about your departure per sms or whats-app



GUEST INFORMATION

SAUNA



Sauna Information



KIDS

Entering the sauna is strictly prohibited for children and minors. Please be aware that there are no oven grids on the stove. Attention!!

SMOKING

Smoking is strictly prohibited in the sauna building.

HYGIENE REGULATIONS

Entering the sauna is only permitted dry and after body cleansing.

The sauna room can only be used with a sufficiently large, dry bath towel; any sweat in the benches must be avoided. Otherwise, please use a second towel in the foot area. Sauna towels are provided.

Please do not make infusions with alcohol, honey etc. by yourself. Sauna scents are available in the shower area.

WATER IN THE SAUNA BUILDING

There is no fixed water connection in the sauna building. Water can be taken in pots from the main house. The wet area / shower can be used for a small washing between infusions. Please use the shower in the main house.

RADIATOR

The radiator in the sauna area (window area) can only be controlled via an app by us.

On arrival, the sauna area is preheated to 20 degrees. If necessary, please activate the floor heating.

AFTER THE SAUNA

Please ventilate the sauna building properly after the sauna session in order to transport the moisture into the open air. After sauna / after switching off the stove please keep the door closed and open the ventilation slide fully.



Sauna Information



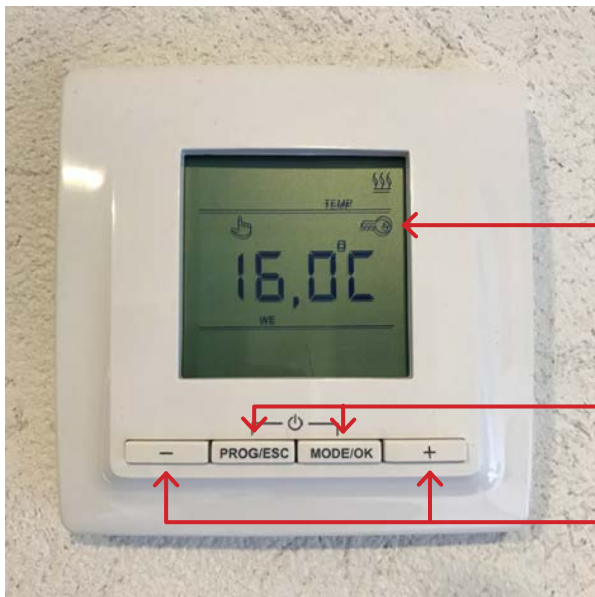
SAUNA OUTSIDE

In general, the nude stay is not a problem. Please take into consideration if neighbors are present to tie a towel.

BIOETHANOL

The use of bioethanol is forbidden. The risk of fire is too high.

FLOOR HEATING



The symbol key on the display indicates that the control panel is locked. To unlock, just hold down the - and + symbols at the same time.

To switch on and off - Press PROG / ESC and MODE / OK at the same time

+ - regulate heating temperature



Sauna Information

SAUNA HEATER

Heater switched off (display bright)



Press 1x - activate display

Hold down for 3 seconds - press the sauna heater once - deactivate the heater

Switching the sauna light on and off
(When the sauna is switched off, the light will burn for 10 minutes)

Selection buttons (+ - temperature)

Menu button:

Press 1x - Activate menu settings Press and hold for 2 seconds - Confirmation

!!!Danger!!!

Humidity can be set at 0%.

Heater switched on (display dark)



Lead time after activating the sauna approx. 60 minutes.

