

# INVERTER PLUS

THE ORIGINAL FULL-INVERTER  
POOL HEAT PUMP



**FAIRLAND**<sup>®</sup>  
Saving iGarden

# STARTING FROM THE NEW

Listen to the Nature





# THE ORIGINAL FULL-INVERTER TECHNOLOGY

## Leading the Market Trend Since 2014

Full-inverter technology drives the DC-inverter twin-rotary compressor hertz-by-hertz and runs the DC-inverter brushless fan motor round-by-round to achieve the optimum performance. At the beginning of the swimming season, Full-inverter pool heat pumps will heat the pool water to the set temperature at 100% heating capacity and then maintain the required temperature at an averagely of 30% of power consumption, which brings up to 15.8 times energy saving





Average **10** Times Quieter

Sound pressure is lower to 46 dB(A) at 1 meter which is quieter than the fridge



Up to **15.8**x Energy Saving

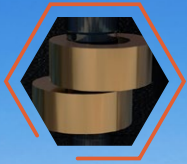
COP 15.8: 1kW Input=15.8kW Heat in Return



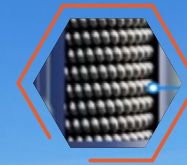




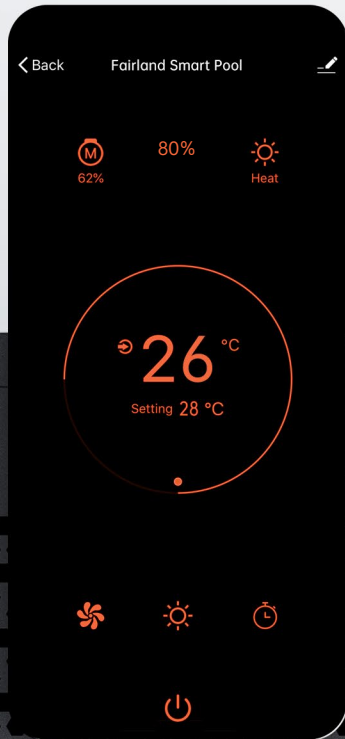
DC-inverter  
Brushless Fan Motor



Mitsubishi Twin-Rotary  
Compressor



Spiral Titanium  
Heat Exchanger



## Free Wi-Fi build-in

Remote control anytime & anywhere with Fairland Smart Pool App.



## Soft Start

The current will start from 0(A) and go up slowly to the rated current in 2 minutes. It will not affect the electricity system, while the start current of On/Off is 5 times higher which is a burden to the system.

# SPECIFICATIONS OF INVERTER-PLUS

Model	IPHR15	IPHR20	IPHR26	IPHR33	IPHR40	IPHR45	IPHR55	IPHR70	IPHR70T	IPHR100T
Advised pool volume (m <sup>3</sup> )	15~30	20~40	25~45	30~55	35~65	40~75	50~95	65~120	65~120	90~160
Operating air temperature (°C)	-7~43									
Performance Condition: Air 26°C, Water 26°C, Humidity 80%										
Heating capacity (kW)	6.5	8.5	10.5	13.0	15.0	17.5	20.5	27.5	27.3	35.8
COP	14.7~6.0	14.8~7.4	15.0~7.4	15.4~7.3	15.5~6.7	15.8~6.2	15.3~6.0	15.4~6.5	15.3~6.5	15.6~5.8
COP at 50% capacity	10.5	10.9	11.0	11.0	10.9	11.1	10.7	11.2	11.2	10.9
Performance Condition: Air 15°C, Water 26°C, Humidity 70%										
Heating capacity (kW)	4.8	6.3	7.3	9.0	10.5	11.5	14.0	18.0	18.0	24.5
COP	7.3~4.5	7.4~5.0	7.7~4.8	7.7~4.8	7.8~4.6	7.8~4.5	7.7~4.4	8.1~4.8	8.1~4.8	8.0~4.7
COP at 50% capacity	6.3	6.6	6.8	6.8	6.6	6.4	6.3	6.8	6.8	7.0
Sound pressure at 1m dB(A)	37.8~47.2	38.8~48.2	38.6~49.9	42.1~50.7	41.3~55.0	43.1~53.8	40.9~54.2	43.5~54.9	43.5~54.9	42.6~54.7
Sound pressure of 50% capacity at 1m dB(A)	40.1	41.4	43.3	45.7	46.5	46.5	46.4	48.4	48.4	45.8
Sound pressure at 10m dB(A)	17.8~27.2	18.8~28.2	18.6~29.9	22.1~30.7	21.3~35.0	23.1~33.8	20.9~34.2	23.5~34.9	23.5~34.9	22.6~34.7
Compressor	Twin-rotary Mitsubishi DC inverter									
Heat exchanger	Spiral titanium tube in PVC									
Casing	Aluminum-alloy									
Power supply	230V/1 Ph/50Hz								400V/3 Ph/50Hz	
Rated input power at air 15°C (kW)	0.13~1.06	0.17~1.2	0.19~1.5	0.23~1.81	0.27~2.2	0.30~2.6	0.36~3.18	0.55~3.8	0.55~3.9	0.61~5.2
Rated input current at air 15°C (A)	0.56~4.60	0.74~5.2	0.83~6.5	1.00~7.87	1.17~9.6	1.3~11.3	1.57~13.8	2.4~16.5	0.79~5.6	0.88~7.4
Advised water flux (m <sup>3</sup> /h)	2~4	2~4	3~4	4~6	5~7	6.5~8.5	8~10	10~12	10~12	12~18
Water pipe in-out size (mm)	50									
Net dimension LxWxH (mm)	894×359×648	894×359×648	894×359×648	954×359×648	954×359×648	954×429×648	954×429×755	1084×429×948	1084×429×948	1154×539×948
Net weight (kg)	42	45	49	50	52	63	68	90	93	120
Qty per 20'FT / 40'HQ (sets)	102/216	102/216	102/216	90/198	90/198	78/165	52/165	48/100	48/100	34/72