



Cumberland Council

## Introduction to the Family Wellbeing Programme



Cumberland Council

Health and wellbeing is at the heart of everything we do

Our values



Ambitious



Collaborative



Compassionate



Empowering



Innovative

## Transforming services for children and families

- We recognise significant gaps and opportunities for improvement in our current early help, prevention and 0-19 health offers for children and families.
- We need your help to work together, within finite resources to re-design this.
- Our Family Wellbeing Programme will transform the support services provided to families and children aged 0-19 (up to 25 with SEND)
- We want to take a preventative approach - too many children and families require crisis support, social care or other specialist support.
- The sooner a child, young person or family can access help, the less likelihood there is of difficulties escalating to need more specialist help.



Health and wellbeing is  
at the heart of everything we do

Our values



Ambitious



Collaborative



Compassionate



Empowering



Innovative

## Dedicated to a co-production approach

- We are working hard to create a vision for Prevention and Early Help Services in Cumberland
- We are working with our local children and families, our schools and our wider partners.
- We want to build a Cumberland where every child grows up in a nurturing and supportive environment, both at home and in school, surrounded by a caring and strong community which enables them to maximise their potential, learn and thrive.



Health and wellbeing is  
at the heart of everything we do

Our values



Ambitious



Collaborative



Compassionate



Empowering



Innovative

We have listened with care to the experience of over 400 families who have taken the time to share their experiences and their aspirations for re-design of preventative support .



Intentional outreach to our communities with protected characteristics that are marginalised.

These are relationships founded on trust – we are building together, talking openly and honestly

What we have learnt requires significant change from Cumberland Systems Leaders

Building a Place in which together we can create a culture of belonging and communities that include, founded on mutual respect and value.

We must and we will change.




**Have your say on the future of family services in Cumberland**

Complete our online survey and you could win a £100 Amazon gift card

We are transforming our services to better meet the needs of children, young people and families in Cumberland. We want to hear from you.

Use the QR code to take part in our anonymous survey. Survey closes on **Friday 15 March 2024**.

For more information, please contact [FamilyWellbeing@cumberland.gov.uk](mailto:FamilyWellbeing@cumberland.gov.uk)

[cumberland.gov.uk](https://www.cumberland.gov.uk)

**Over 300 responses from local families in the first month**

- Visit the webpage: <https://www.cumberland.gov.uk/children-family-services>
- Complete the survey (scan QR code on poster)
- Attend one of the drop-in sessions (6 sessions completed) along with attendance at coffee mornings etc.
- Email us with any feedback: [FamilyWellbeing@cumberland.gov.uk](mailto:FamilyWellbeing@cumberland.gov.uk)

Survey

Drop In

Attended and been welcome into local community areas

Developed a YP version survey

Asking out community and voluntary sector their thoughts

# Timescales

<p><b>Consultation with local people; expert advice from partners and systems leaders; needs and risk analysis; review of commissioned contracts commences</b></p>	<p><b>January – March 24</b></p>
<p><b>Analysis of feedback and options appraisal Review of Commissioned Contracts effectiveness</b></p>	<p><b>March – April 24</b></p>
<p><b>Systems Leaders and Co-Production review of preferred options – for comment and review</b></p>	<p><b>April – May 24</b></p>
<p><b>Early Help and Preventative Strategy approval; Early Help and Prevention systems change implementation plan; Recommendations and approvals for commissioned contracts</b></p>	<p><b>June-July 24</b></p>
<p><b>Change management, HR consultation, contract notice and retendering, and implementation commences</b></p>	<p><b>July 24</b></p>



Cumberland Council

Health and wellbeing is at the heart of everything we do

**Our values**

- Ambitious
- Collaborative
- Compassionate
- Empowering
- Innovative

Extended till April

## Please tell us...

- What do you think works as effective in early help for children, young people and families?
- What are the priority risk and needs that we can address sooner in early help? What are we hearing? What worries us about our families?
- What are the opportunities to build upon?
- What Equity, Diversity and Inclusion needs should we be considering?



Health and wellbeing is  
at the heart of everything we do

Our values



# Working with you on the Family Wellbeing Transformation Programme

- Contact us via email at any time between now and the end of March 2024 with your thoughts, comments and ideas: [FamilyWellbeing@Cumberland.gov](mailto:FamilyWellbeing@Cumberland.gov).
- We can come out and visit and listen to you and the families that access your organisations if appropriate.
- YP friendly survey to be circulated this week.



Health and wellbeing is  
at the heart of everything we do

Our values



Ambitious



Collaborative



Compassionate

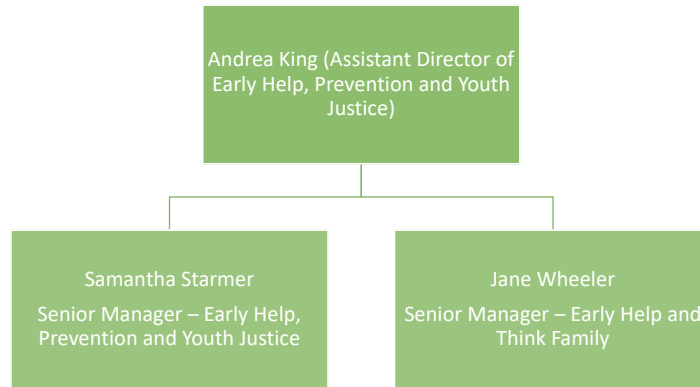


Empowering



Innovative

# Leadership Structure – Early Help



Health and wellbeing is  
at the heart of everything we do

Our values





# Contact Details

Jane Wheeler  
Senior Manager Early Help and Think Family  
Children's Services  
Cumberland Council, Cumbria House, 117 Bothergate, Carlisle, CA1 1RD

T: 07557 402932/ 07467 716041  
[Jane.wheeler@cumberland.gov.uk](mailto:Jane.wheeler@cumberland.gov.uk)



Health and wellbeing is  
at the heart of everything we do

Our values



Ambitious



Collaborative



Compassionate



Empowering



Innovative