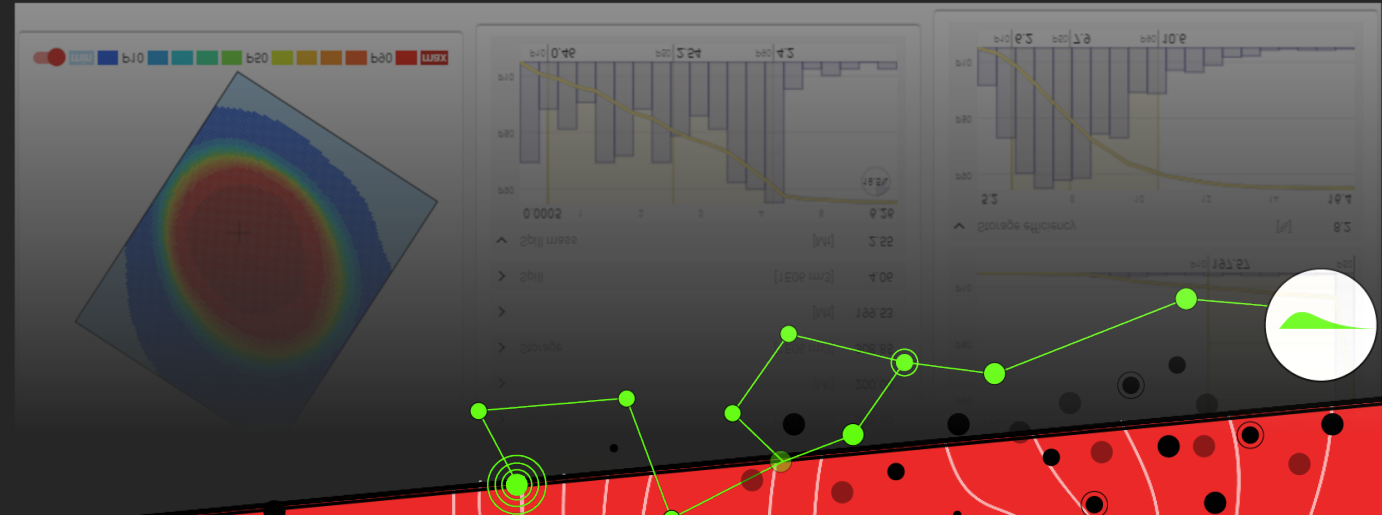
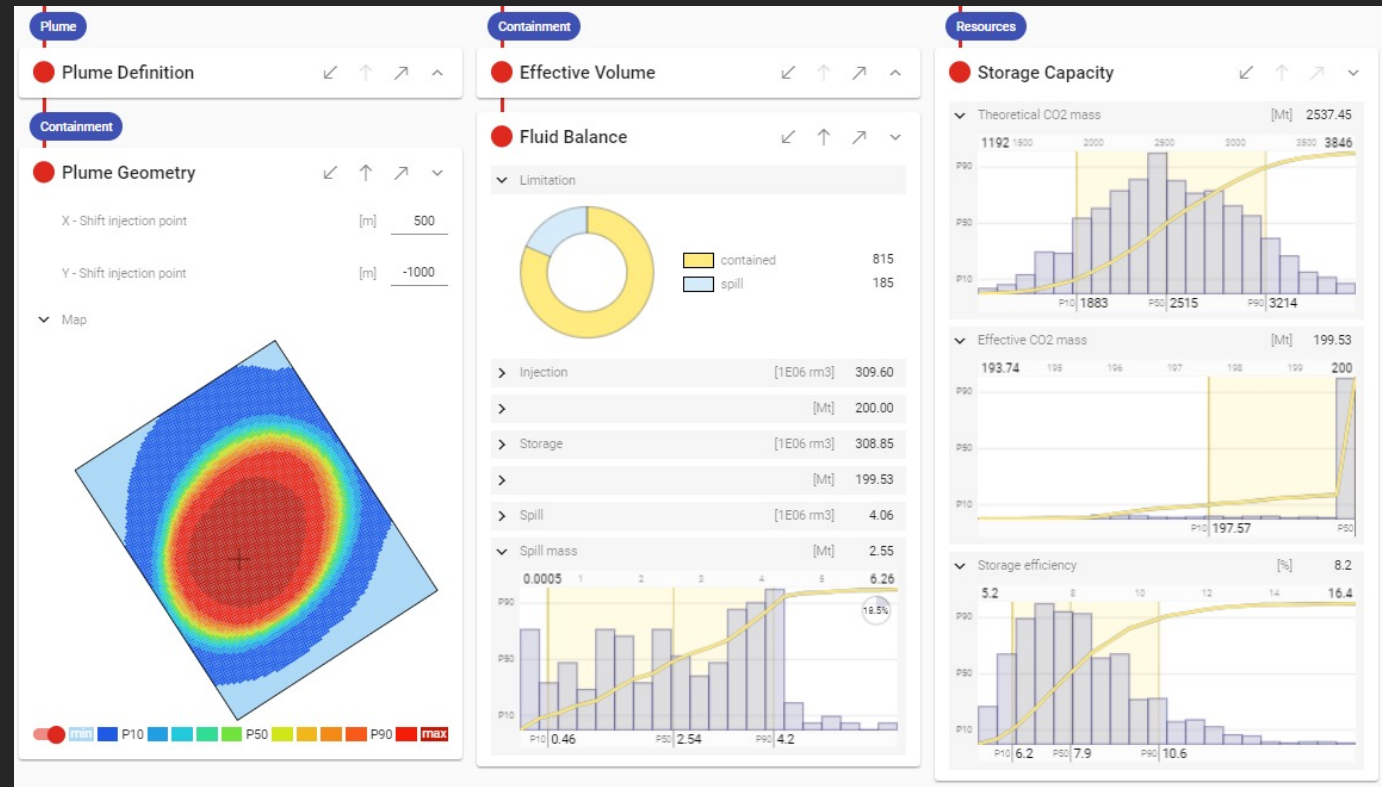


ArianeLogiX

Ariane Exploration & Appraisal Asset Evaluation





PRÉSENTATION DE L'ENTREPRISE / INSTITUTION / PERSONNE

Start-up company based in Germany/France

www.ariane-logix.com

Software & Consulting

Oil & Gas, Carbon Storage

Energy Industry (Supermajors & Regulators) and Academia

Dr. Martin Neumaier (m.neumaier@ariane-logix.com)

PRÉSENTATION DE L'OUTIL NUMÉRIQUE

Probabilistic simulation of value
Cloud-based asset database

The screenshot displays a digital tool interface for probabilistic simulation of value, organized into several panels:

- Left Panel (Menu):** A hierarchical list of parameters grouped into sections:
 - Trip:** GRV Definition (Closure 55), Reservoir Definition, Pore Volume.
 - Pressure & Temperature:** Water Column, Thermal Model (hot gradient).
 - Trap Conditions:** Trap Conditions.
 - PVT Model:** Test Conditions, Phase (PVT 0445), Densities.
 - Charge:** Charge Definition, Phase, Densities, Charge Volumes.
- Middle Panel (Seal & Fluids):**
 - Seal:** Seal Definition, HC Pressure, Accumulation, Fill Balance, Vapor Leak & Spill, Liquid Leak & Spill.
 - Fluids:** Fluid Definition, Vapor, Liquid, Contacts.
- Right Panel (Risk & Resources):**
 - Risk:** Geological COS.
 - Resources:** In-Place (STOIIP chart showing distribution with mean 223.43 and 95.4% confidence interval). Below it, Solution gas (180.67 bcf) and GIIP (130.22 bcf) are listed. A second chart shows a distribution with mean 1276 and 76.8% confidence interval. Below that, Condensate (2.53 Immbbl) is listed.
 - Recoverable:** Recoverable.
 - Wells:** Proposed Well, Well COS, Updip Volumes, Penetrated Volumes, Downdip Volumes.
- Assets Sidebar (Right):** A tree view showing the asset hierarchy:
 - martin
 - GOM
 - offshore Brazil
 - Thermal models
 - PVT models
 - Traps: Closure 55, Closure 57, Closure 63.
- Map (Bottom Right):** A geographical map showing the location of the asset, with red and blue markers indicating specific sites.

APPLICATION DE L'OUTIL NUMÉRIQUE

Screening for Carbon Storage sites

Risk assessment & Decision making

Theoretical & Effective storage capacity

Sweep & Storage efficiency

Containment risk & Spill mass

