

One True Love Song

Lento (Easy) ♩. = 55

John R. Daniels

C F G C C F

Piano

4

Night-time keeps com - ing too ear - ly. The pic - ture re - minds him that

G C F C F G

Pno.

SAMPLE ONLY

8

she's gone to stay. He turns on the ster - e - o loud - ly It's

F G C F C

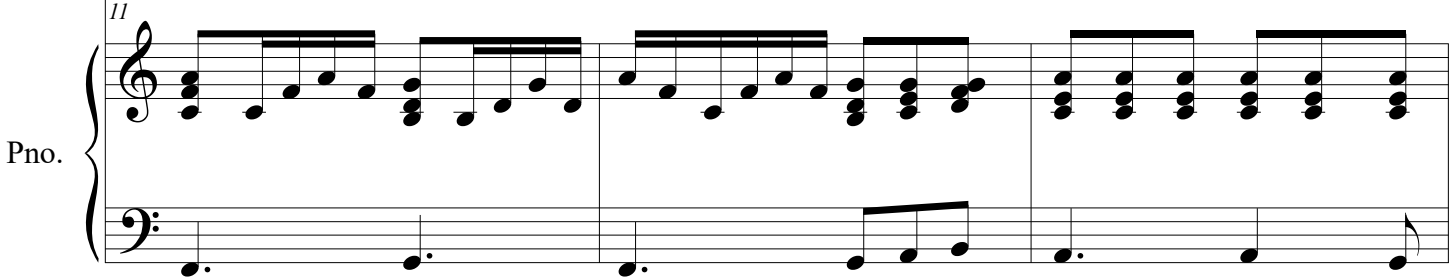
Pno.

11

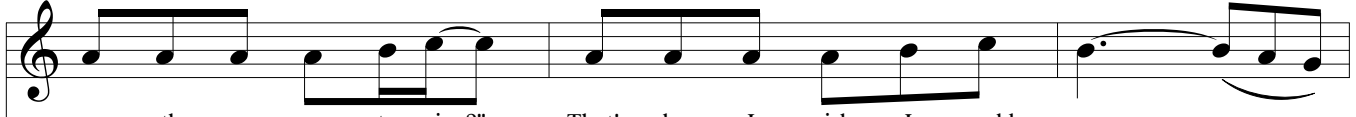


then that he knows it has no - thing to say. He says to him - self "Is there

F G F G Am

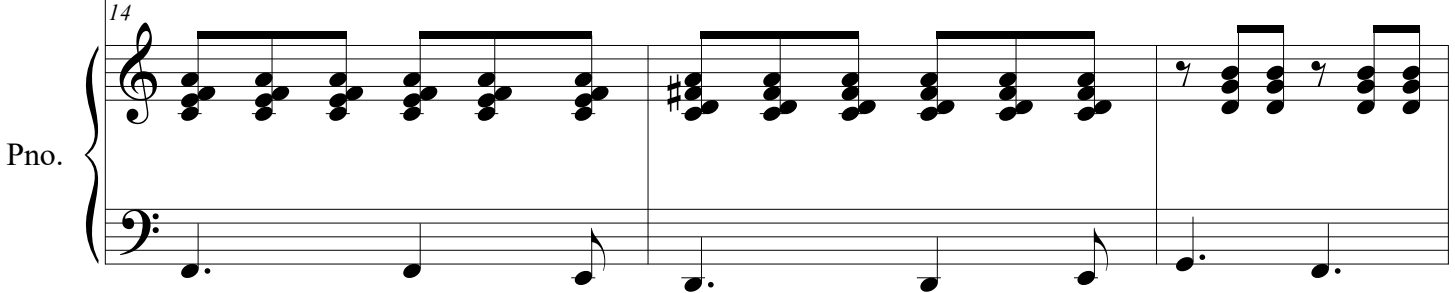


14



no oth - er song to sing?" That's when I wish I could say, _____

Fmaj7 D7 G

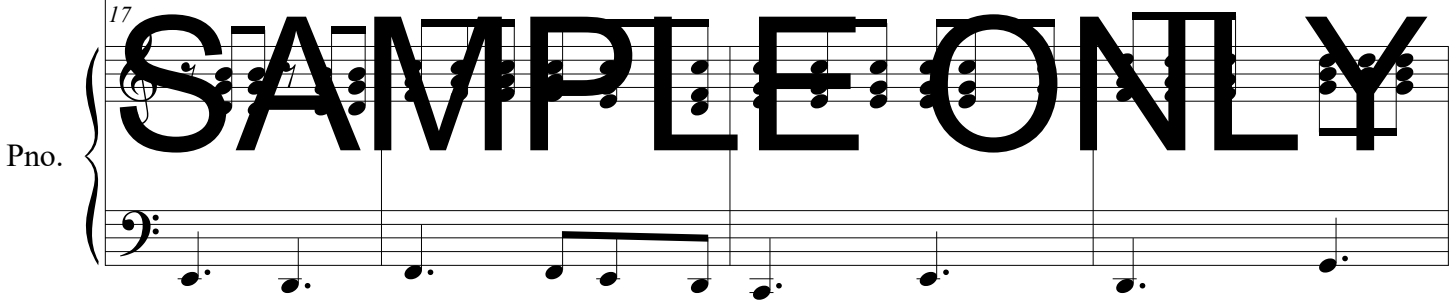


17



"Let Je - sus be your own one true love song. It won't be sad and lone - ly if

G F C Dm G



21
you sing a - long. Let Je sus give — you a new song to sing. The
C C7 F C

Pno. **SAMPLE ONLY**

24
Mas - ter Mu - si - cian is wait - - - ing."
F C Dm G C F

Pno.

27
She's ne - ver a - lone but she's
G C C F G C F

Pno.

31

lone - ly. The par - ty she's liv - ing is tak - ing its toll. The

C F G F G

Pno.

34

mu - sic is al - ways a - round her, but the words don't make sense to a

C F C F G

34

Pno.

SAMPLE ONLY

37

hun - gry soul. She says to her - self "Is there no oth - er song to sing?"

F G A m F maj7

37

Pno.

40

That's when I wish I could say. "Let Je - sus be your own

D7 G G F

Pno.

Detailed description: This system contains the first four measures of the piece. The vocal line starts with a treble clef and a key signature of one sharp (F#). The lyrics are "That's when I wish I could say." followed by a long line and then "'Let Je - sus be your own". The piano accompaniment consists of a right hand with chords and a left hand with a simple bass line. Chords are labeled D7, G, G, and F.

44

one true love song. It won't be sad and lone - ly if you sing a long. Let Je sus give — you a

C Dm G C C7 F

44

SAMPLE ONLY

Pno.

Detailed description: This system contains the next four measures. The vocal line continues with the lyrics "one true love song. It won't be sad and lone - ly if you sing a long. Let Je sus give — you a". The piano accompaniment continues with chords labeled C, Dm, G, C, C7, and F. A large, bold watermark "SAMPLE ONLY" is overlaid across the piano part.

48

new song to sing. The Mas ter Mu - si - cian is wait - - -

C F C Dm G

48

Pno.

Detailed description: This system contains the final four measures. The vocal line continues with the lyrics "new song to sing. The Mas ter Mu - si - cian is wait - - -". The piano accompaniment continues with chords labeled C, F, C, Dm, and G.

51

ing"

C F G C C F

51

Pno.

54

Mu - sic is part of our life here, but

G C F C

54

Pno.

57

some-times it sounds like so much noise. There's so ma - ny sell - ing their

F G F G C F

57

Pno.

60

songs now, but none of them seems to be the right choice.

C F G F G

Pno.

63

I hear you say "Is there no oth - er song to sing?" That's when I wish I could

A m F maj7 D7

63

SAMPLE ONLY

Pno.

66

say _____ ay. "Let Je - sus be your own one true love song. It won't

G G F C

66

Pno.

70

be sad and lone - ly if you sing a - long. Let Je sus give you a

Dm G C C7 F

Pno.

73

new song to sing. The Mas - ter Mu - si - cian is wait - ing.

C F C Dm G

Pno.

76

Let Je - sus be your own one true love song. It won't be sad and lone - ly if

F C Dm G

Pno.

SAMPLE ONLY

79

you sing a - long. Let Je sus give_ you a new song to sing. The

C C7 F C

Pno.

82

Mas - ter Mu - si - cian is wait - - - ing.

F C Dm G C F

Pno.

SAMPLE ONLY

85

rit.

G C C F G G7 C

Pno.