

Hold Onto Life

Allegro (M.M. ♩ = c. 120)

(Solid Rock Tempo)

Original setting for the keyboard
was a "Brass Ensemble"

John R. Daniels

Intro.

Voice

Piano

5

Chorus

5

SAMPLE ONLY

Pno.

10

10

life. You are im - por - tant _ to _ Some - one. Hold on to

Pno.

Verse 1

14

life. There is love for You. _____ A - lone in a crowd,

Pno.

18

laugh ing out loud, hid - ing your pain__ in your laugh - ter. __

18

SAMPLE ONLY

Pno.

21

Cry ing in side, wish ing you'd die, but you know that's not__ what

21

Pno.

24

you're af ter. Life can be cruel, a hard knock school, and

Pno.

27

what seems fair ne - ver hap - pens. Con - fu - sion reigns, you're

Pno.

30

in such pain, but don't be part of your own de - struc - tion.

Pno.

Hold Onto Life

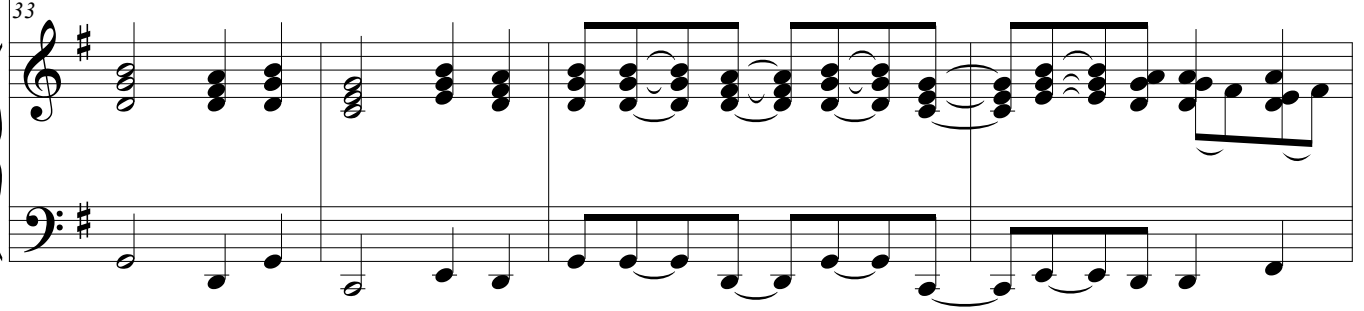
Chorus

33



Hold on to life. You are im - por - tant to the Lord.

Pno.

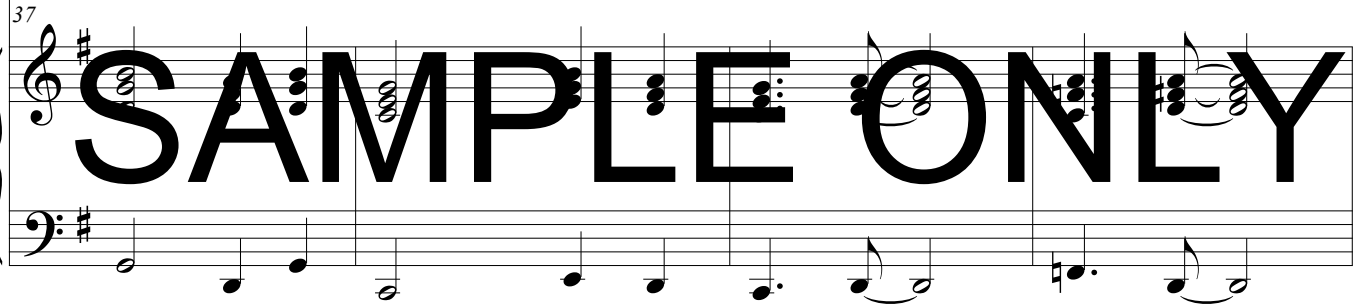


37



Hold on to life. There is love for You.

Pno.



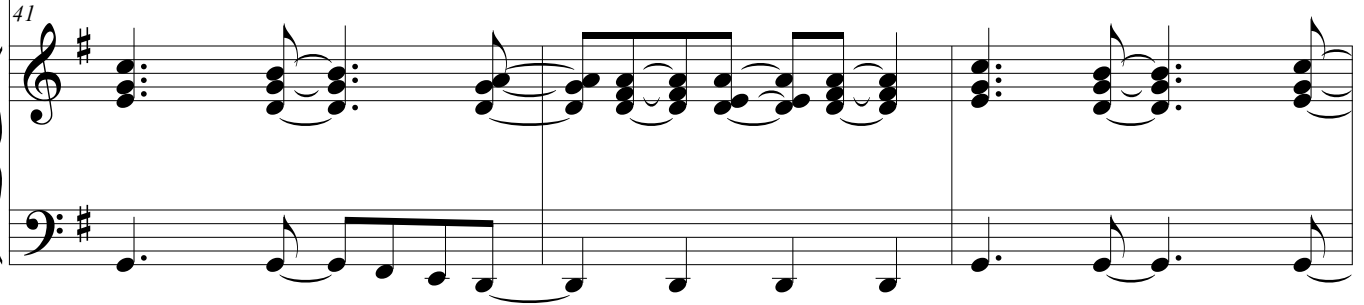
Bridge

41



No - one else can re - place you. God cre - a - ted you

Pno.



44

— that way. Don't do the de - vil no fa - vors.

Pno.

Detailed description: This system contains the first two measures of music. The vocal line (treble clef) starts with a whole note rest, followed by a quarter note G4, a quarter note A4, a quarter note B4, a quarter note C5, a quarter rest, a quarter note B4, a quarter note A4, a quarter note G4, a quarter note F4, a quarter note E4, a quarter note D4, and a quarter rest. The piano accompaniment (grand staff) features a rhythmic pattern of eighth notes in the right hand and a bass line in the left hand.

47

Chorus

Don't go — throw - ing your life — a - way. Hold on to life.

Pno.

SAMPLEE ONLY

Detailed description: This system contains the third and fourth measures of music, labeled as the start of the chorus. The vocal line (treble clef) begins with a whole note rest, followed by a quarter note G4, a quarter note A4, a quarter note B4, a quarter note C5, a quarter note B4, a quarter note A4, a quarter note G4, a quarter note F4, a quarter note E4, a quarter note D4, and a quarter rest. The piano accompaniment continues with the same rhythmic pattern. A large, bold watermark 'SAMPLEE ONLY' is overlaid across the piano accompaniment staves.

51

Je - sus — loves — you, — you — should know. Hold on to

Pno.

Detailed description: This system contains the fifth and sixth measures of music. The vocal line (treble clef) starts with a whole note rest, followed by a quarter note G4, a quarter note A4, a quarter note B4, a quarter note C5, a quarter note B4, a quarter note A4, a quarter note G4, a quarter note F4, a quarter note E4, a quarter note D4, and a quarter rest. The piano accompaniment continues with the same rhythmic pattern.

54

life. There is love for You. _____

Pno.

57 Verse 2

O - pen your eyes — and look to the skies and see Life and Love all a - round

Pno.

60

— you. You can be warm in God's lov - ing arms if you

Pno.

63

hold on to life___ just a lit - tle___ long - er. ___ Hold on___ strong, it

Pno.

Detailed description: This block contains the first system of music, measures 63 to 65. It features a vocal line in the upper staff and a piano accompaniment in the lower staff. The key signature is one sharp (F#). The lyrics are: "hold on to life___ just a lit - tle___ long - er. ___ Hold on___ strong, it".

66

won't be___ long. The Lord of___ Life___ real - ly loves ___ you. ___

Pno.

SAMPLE ONLY

Detailed description: This block contains the second system of music, measures 66 to 68. It features a vocal line in the upper staff and a piano accompaniment in the lower staff. The key signature is one sharp (F#). The lyrics are: "won't be___ long. The Lord of___ Life___ real - ly loves ___ you. ___". A large, bold watermark "SAMPLE ONLY" is overlaid across the piano accompaniment staff.

69

Op - en your heart and let His Love start. The life thsat He gives will___ just

Pno.

Detailed description: This block contains the third system of music, measures 69 to 71. It features a vocal line in the upper staff and a piano accompaniment in the lower staff. The key signature is one sharp (F#). The lyrics are: "Op - en your heart and let His Love start. The life thsat He gives will___ just".

Chorus

72

a - maze you. Hold on to life.

Pno.

75

You are im - por - tant to the Lord. Hold on to life. There is love for

Pno.

79

You. Hold on to

Pno.

82

life, tight - ly. Je - sus ___ loves you, ___ you ___ should know.

Pno.

85

Hold on to life. There is love for You. _____ Love for

Pno.

89

you. _____

Pno.