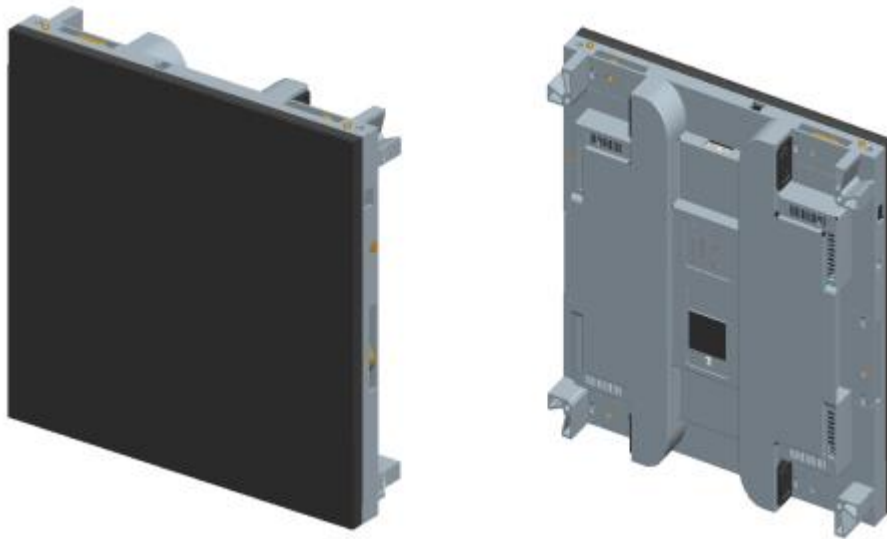


## Fine Pitch Indoor LED Video Wall

TV-PH1.25/TV-PH1.5625/TV-PH1.667/TV-PH1.923



### Descriptions

The TV series fine pitch LED video wall is with high-quality, outstanding stability and display effect. It supports front & rear maintenance, solving the space limitation problem for places, such as command center, monitoring center, conference center, and exhibition hall.

### Product Features

Interlocking structure between panels, to achieve seamless splicing and quick installation.

Internal design with 360° omni-directional heat dissipation, full die cast aluminum housing to be fully cooling. With system, power supply double backup and loop backup protection, to ensure that the normal display of the screen when there is some fault in some loop or dual nodes. With automatic fault detection and feedback to the control room to be maintained in time and achieve true zero fault.

With module-level point-by-point calibration design, automatic balance correction when power on. Support 2D/3D display at the same time, active 3D without strobe and no resolution loss.

With automatic real-time intelligent monitoring, automatic warning when in sub-health state. Ultra-thin wall structure for real front maintenance.

## Specifications

Model	TV-PH1.25	TV-PH1.5625	TV-PH1.667	TV-PH1.923
LED Package Form	SMD1010	SMD1010	SMD1010	SMD1515
Viewing Angle	H:160 ° V : 160 °	H:160 ° V : 160 °	H:160 ° V : 160 °	H:160 ° V : 160 °
Brightness (cd/m <sup>2</sup> )	Before correction : 1000cd/m <sup>2</sup> ; After correction : 800cd/m <sup>2</sup> (brightness adjustable)	Before correction : 1000cd/m <sup>2</sup> ; After correction : 800cd/m <sup>2</sup> (brightness adjustable)	Before correction : 1000cd/m <sup>2</sup> ; After correction : 800cd/m <sup>2</sup> (brightness adjustable)	Before correction : 1000cd/m <sup>2</sup> ; After correction : 800cd/m <sup>2</sup> (brightness adjustable)
Contrast Ratio	3000: 1	3000: 1	3000: 1	3000: 1
Panel resolution	320*240	256*192	240*180	208*156
Refresh rate	3200Hz (High) 1920Hz (Normal)	3200Hz (High) 1920Hz (Normal)	3200Hz (High) 1920Hz (Normal)	3200Hz (High) 1920Hz (Normal)
Scanning mode	1/27	1/32	1/30	1/26
Max/Avg. power consumption per panel	858/286	1000/333	1000/333	600/200
Panel Weight	30	30	30	30
Panel size (mm)	400*300	400*300	400*300	400*300
Module size (mm)	200*150	200*150	200*150	200*150
Maintenance method	Front/Rear	Front/Rear	Front/Rear	Front/Rear
Grey level	16bit	16bit	16bit	16bit

Protection grade	IP30	IP30	IP30	IP30
Working temperature and humidity	0 ° ~+45 ° /10~90%RH	0 ° ~+45 ° /10~90%RH	0 ° ~+45 ° /10~90%RH	0 ° ~+45 ° /10~90%RH