

NEWARK EMA



2015 HIV/AIDS EPIDEMIOLOGICAL PROFILE

**HIV Surveillance Data as of
December 31, 2014**

May 2015

NEWARK EMA
2015 HIV/AIDS EPIDEMIOLOGICAL PROFILE
Data as of December 31, 2014

Table of Contents

HIV/AIDS Data as of 12/31/14 1
TRENDS in HIV/AIDS Data 2005 to 2014 6
 Findings Re Trends 6
DATA TABLES 2014..... 10

List of Tables

Table 1: PLWHA as of 12/31/14.....1
Table 2: PLWHA in EMA’s Five Largest Cities.....5

List of Figures

Figure 1: Distribution of PLWHA by County, 12/31/14.....1
Figure 2: Distribution of PLWHA by AIDS and HIV (Not AIDS) within County.....1
Figure 3: Distribution of PLWHA by Gender within County.....2
Figure 4: Distribution of PLWHA by Age Category2
Figure 5: Distribution of PLWHA by Age Category within County3
Figure 6: Distribution of PLWHA by Race/Ethnicity within County3
Figure 7: Distribution of PLWHA by Exposure Category in Newark EMA4
Figure 8: Distribution of Male PLWHA by Male Exposure Category Within County.....4
Figure 9: Distribution of Female PLWHA by Female Exposure Category Within County.....4
Figure 10: Distribution of PLWHA by 5 Largest Cities and Rest of NEMA.....5
Figure 11: PLWHA in Newark EMA 2005 - 20147
Figure 12: PLWHA in Newark EMA by Gender 2005 - 2014.....7
Figure 13: PLWHA in Newark EMA by Race/Ethnicity 2005 - 20147
Figure 14: PLWHA in Newark EMA by Age Category 2006 - 20148
Figure 15: Male PLWHA in Newark EMA by Transmission Mode 2005 - 20148
Figure 16: Female PLWHA in Newark EMA by Transmission Mode 2005 - 20149
Figure 17: Distribution of PLWHA in Newark EMA by County/Region 2005 - 20149

2015 EPI PROFILE - Newark EMA

HIV/AIDS Data as of 12/31/14

Table 1: PLWHA as of 12/31/14

County	PLWHA
Essex	9,848
Union	2,913
Morris	850
Sussex	166
Warren	181
Total-NEMA	13,958
MSW	1,197
	8.6%

Figure 1: Distribution of PLWHA by County, 12/31/14

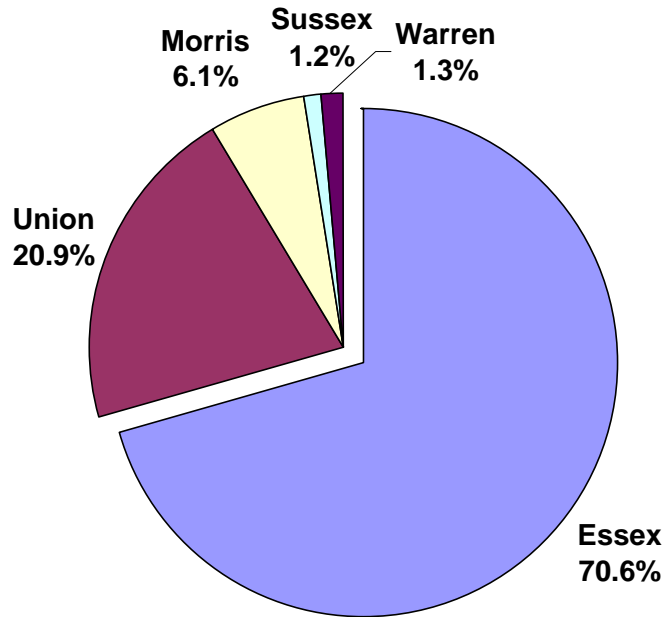


Figure 2: Distribution of PLWHA by AIDS and HIV (Not AIDS) within County

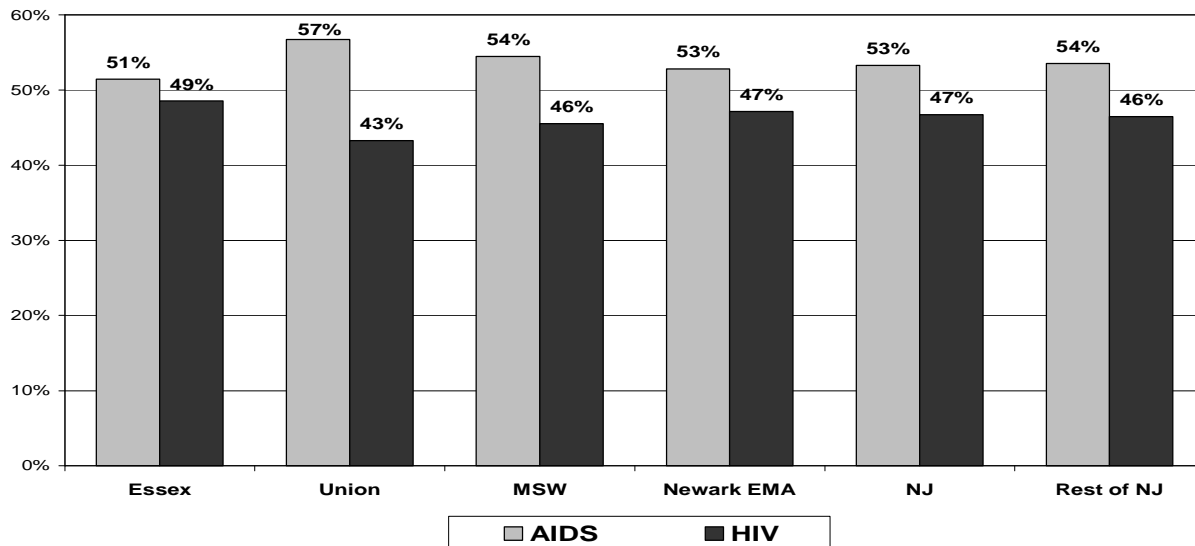
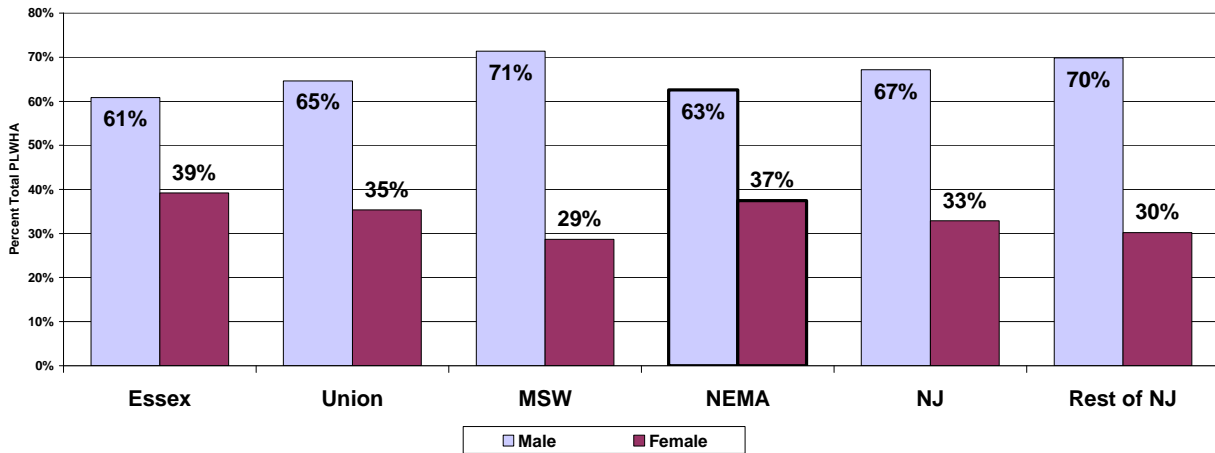


Figure 3: Distribution of PLWHA by Gender within County



The percent of female PLWHA in the EMA has declined from 40% through 2010 to 37% as of 2014.

Figure 4: Distribution of PLWHA by Age Category

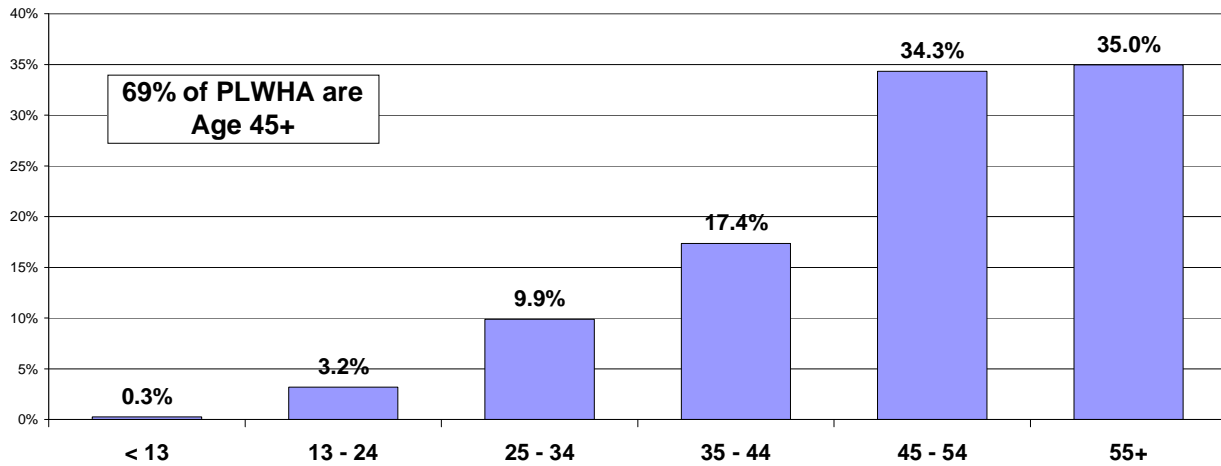
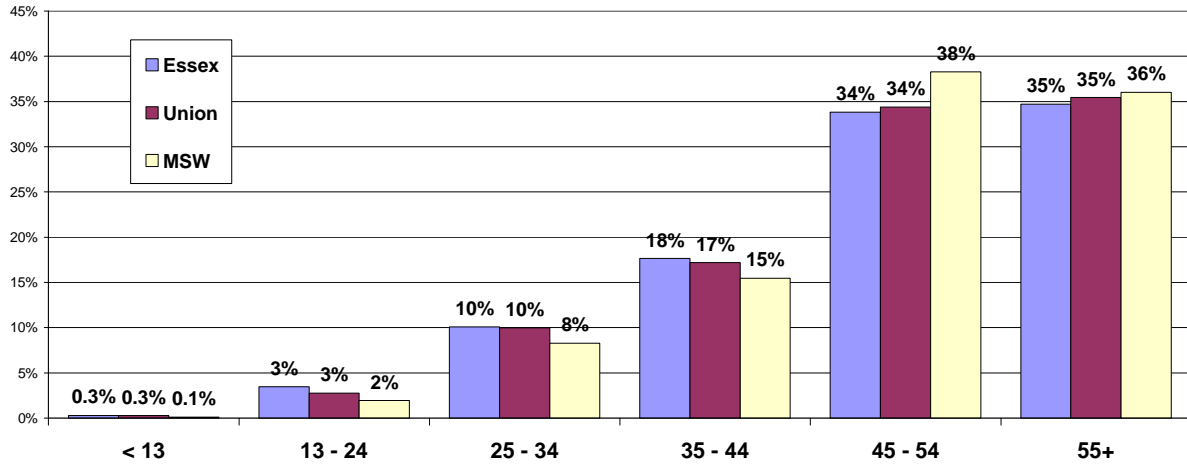


Figure 5: Distribution of PLWHA by Age Category within County



Percent of PLWHA Age 45+ by County:

Essex	69%
Union	69%
MSW	74%

Figure 6: Distribution of PLWHA by Race/Ethnicity within County

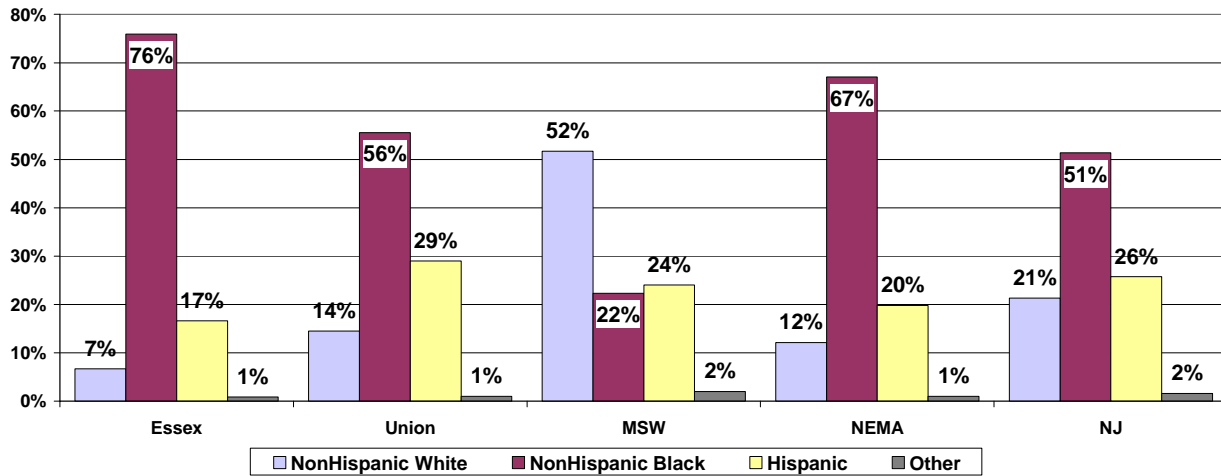


Figure 7: Distribution of PLWHA by Exposure Category in Newark EMA

Heterosexual exposure is the leading mode of transmission EMA-wide followed by Men who have Sex with Men (MSM) and Injection Drug Use (IDU). MSM replaced IDU as 2nd leading cause in 2013. In 2014 MSM is the leading cause among males, for the first time in 15 years.

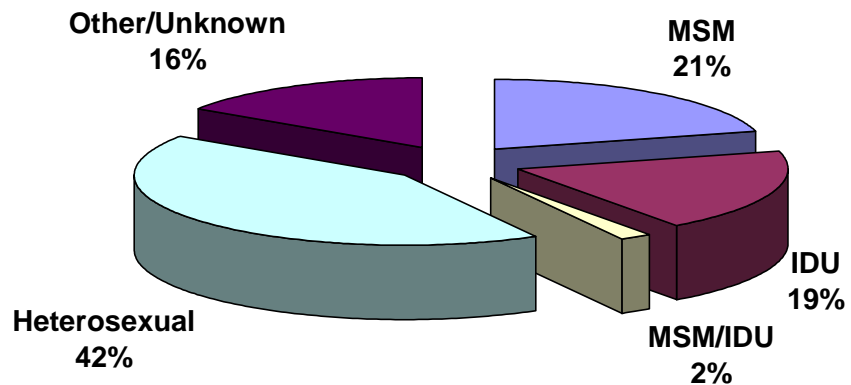


Figure 8: Distribution of Male PLWHA by Male Exposure Category Within County

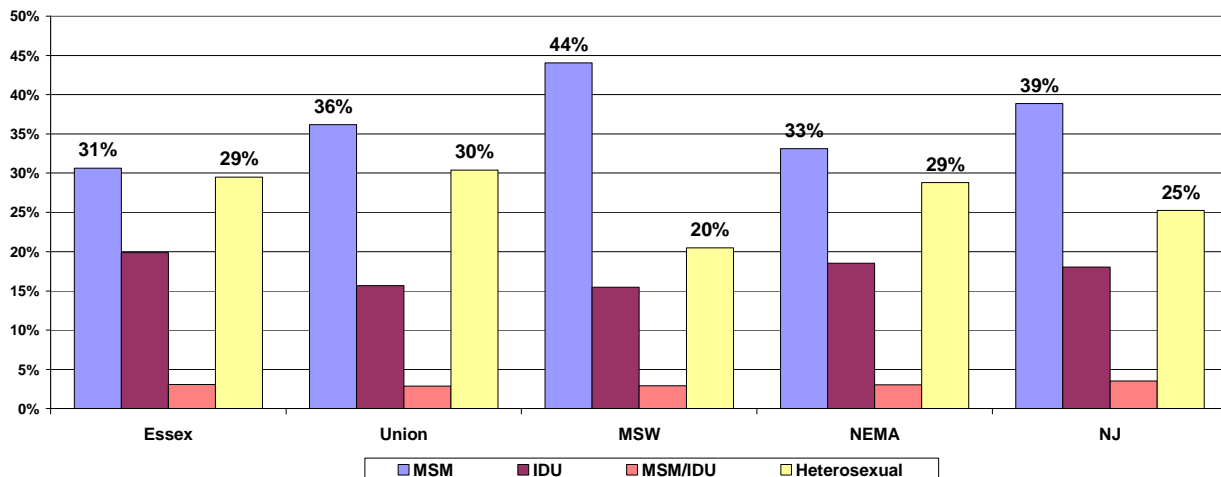


Figure 9: Distribution of Female PLWHA by Female Exposure Category Within County

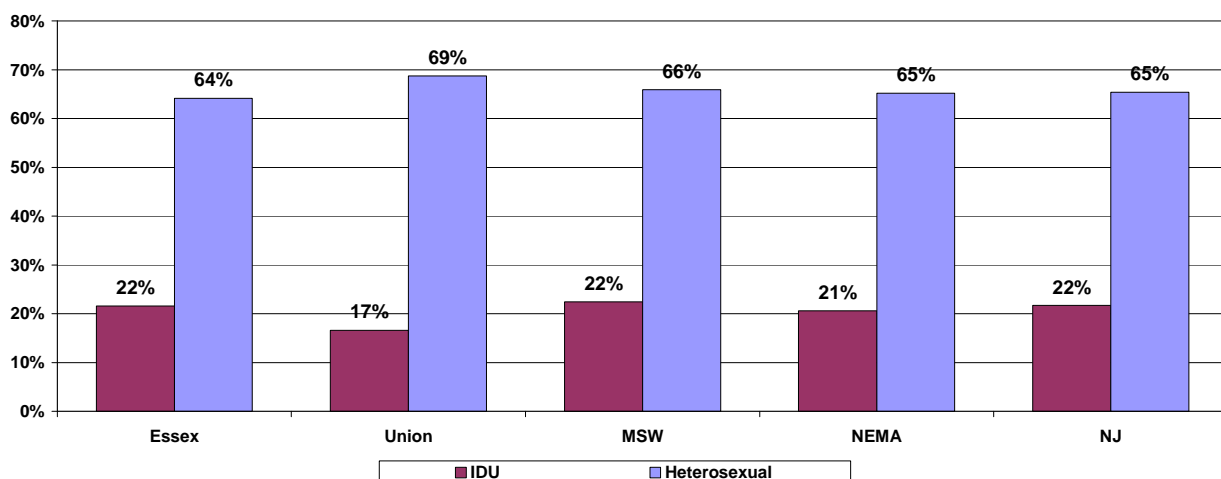


Figure 10: Distribution of PLWHA by 5 Largest Cities and Rest of NEMA

72% of the EMA’s PLWHA reside in its five largest cities. While this is a decline from the 74% in 2011, the total number of 9,894 PLWHA including 5,830 in Newark is very high. Resources must still be targeted to these five cities.

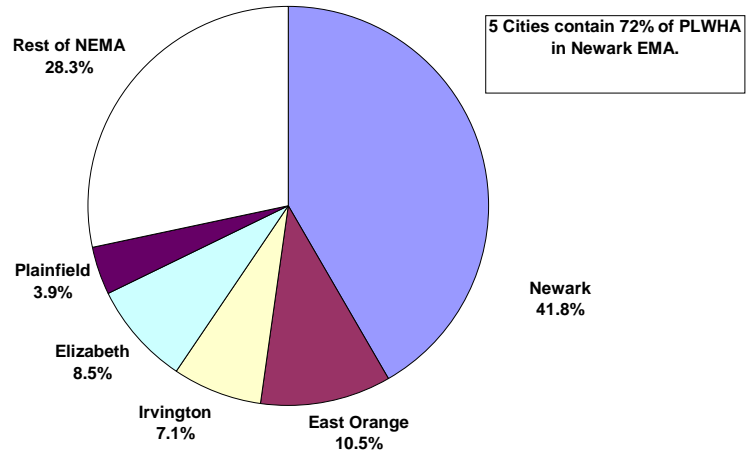


Table 2: PLWHA in EMA’s Five Largest Cities

City	PLWHA	% NEMA
Newark	5,830	41.8%
East Orange	1,462	10.5%
Irvington	989	7.1%
Elizabeth	1,183	8.5%
Plainfield	540	3.9%
TOTAL	10,004	71.8%

TRENDS in HIV/AIDS Data 2005 to 2014

Note: NJ Dept. Health did not publish HIV surveillance data by county and municipality (“county and municipal statistics”) for year ending 12/31/2011.

Findings Re Trends

- **Total PLWHA** - The HIV epidemic in the Newark EMA **continues to increase annually to 13,958 as of 12/31/14.**
- **Gender** – The **percent of female PLWHA is declining** within the total epidemic – from **40% in 2009 to 37% in 2014.** Male percentage is increasing, as the EMA’s epidemic is slowly becoming like the state and national epidemic.
- **Race/Ethnicity** – The epidemic consists of a **majority (87%) of racial/ethnic minority population.** However, the demographics are shifting. As a percent of PLWHA, there was a **decline from 74% to 67% among African Americans and an increase from 14% to 20% among Hispanic/Latinos 2005-2014.** There has been no change among NonHispanic Whites and Other.
- **Age** – The EMA continued to experience an **aging epidemic, with 35% of PLWHA age 55 or older and 69% older than age 45.** PLWHA age 35-44 dropped from 32% of the epidemic in 2006 to 17% in 2014. However, the **younger PLWHA remained constant** with those age 25-34 at 10% of PLWHA and Youth age 13-24 at above 3% of PLWHA. Pediatric cases are 0.3% of the epidemic.
- **Transmission Mode**
 - **Males** – The transmission mode for males has changed dramatically in the Newark EMA. The leading cause in 2005 at 31% – Heterosexual – has dropped to #2 at 29% in 2014. The 2nd leading cause – IDU – dropped from 29% in 2005 to 19% in 2014 and is 3rd. **In 2014 the leading transmission mode is MSM at 33%, up from 23% in 2005.**
 - **Females** – There has been minimal change in transmission mode for females from 2005 to 2014. Heterosexual remained #1 rising from 60% to 65% and IDU at #2 declined from 29% to 21%. The decline in IDU corresponds to trends among males and the decline in injection drug use in the EMA. The substance abuse epidemic continues in the EMA, but primary methods of use are snorting, sniffing and other non-injection modes.
- **Geography** – The epidemic continues to **slowly spread outside of Essex County** to Union County and the Morris, Sussex, Warren region. From 2005-2014, the percent of NEMA PLWHA in Essex County declined from 74% to 71%, increased in Union from 19% to 21% and increased in the Morris, Sussex, Warren region from 7% to 9%.

Figure 11: PLWHA in Newark EMA 2005 - 2014

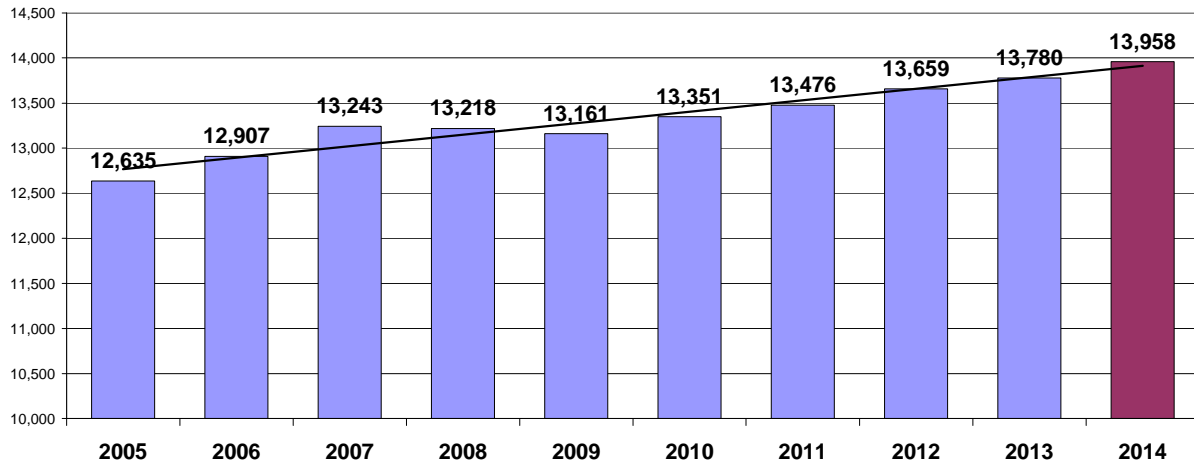


Figure 12: PLWHA in Newark EMA by Gender 2005 - 2014

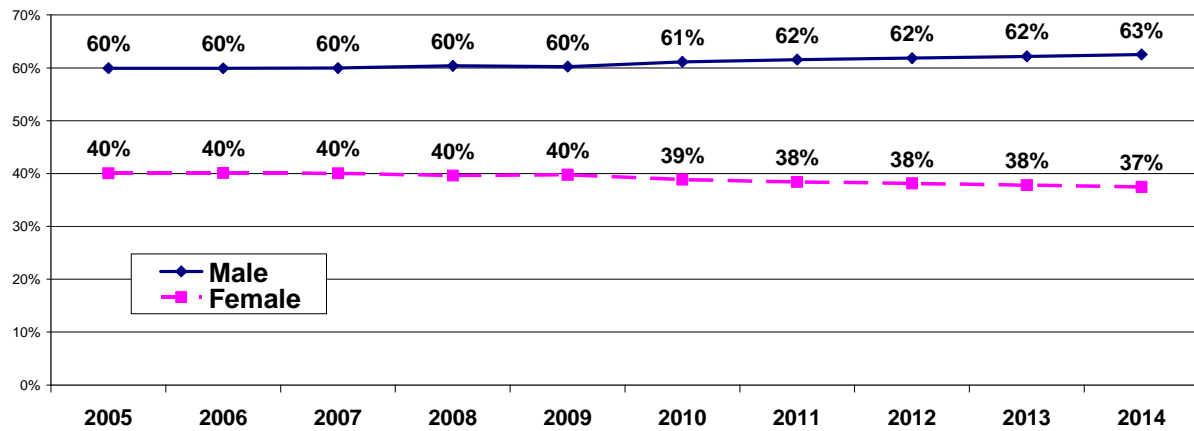


Figure 13: PLWHA in Newark EMA by Race/Ethnicity 2005 - 2014

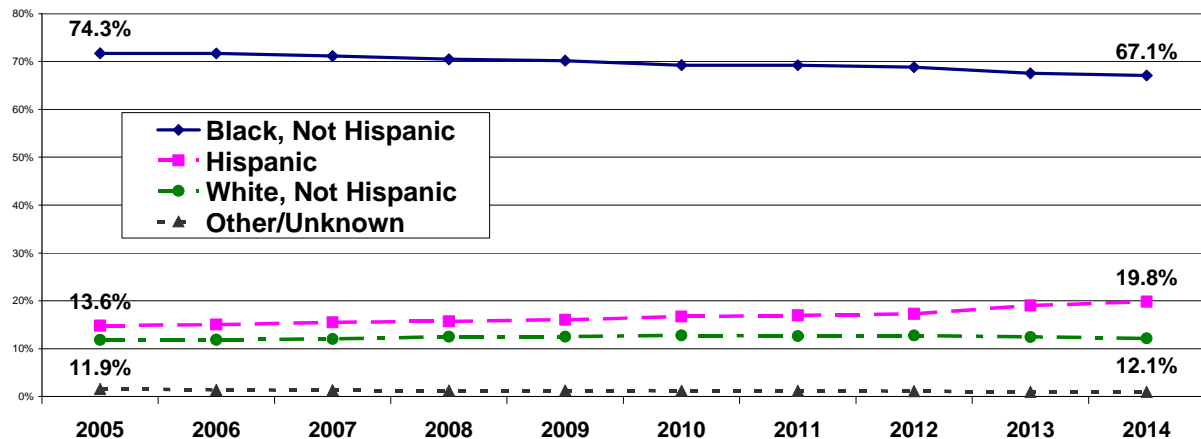


Figure 14: PLWHA in Newark EMA by Age Category 2006 - 2014

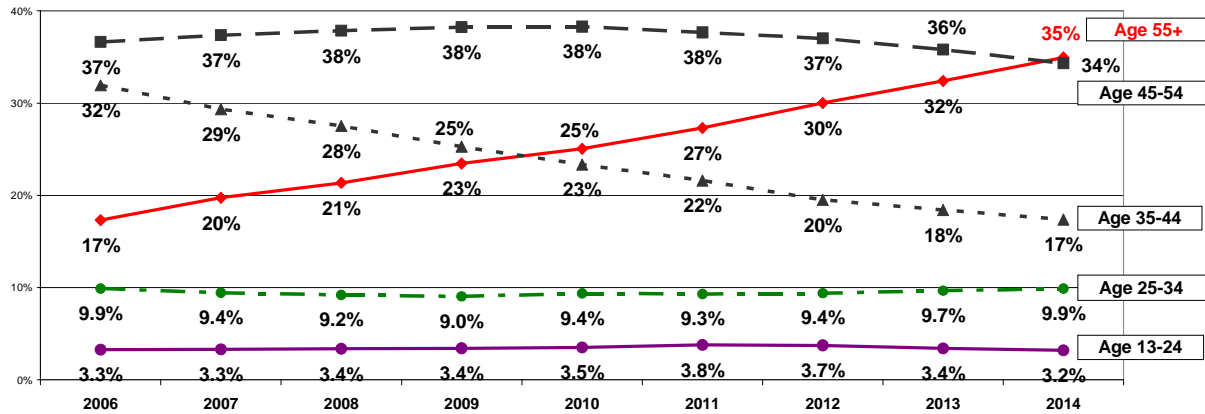


Figure 15: Male PLWHA in Newark EMA by Transmission Mode 2005 - 2014

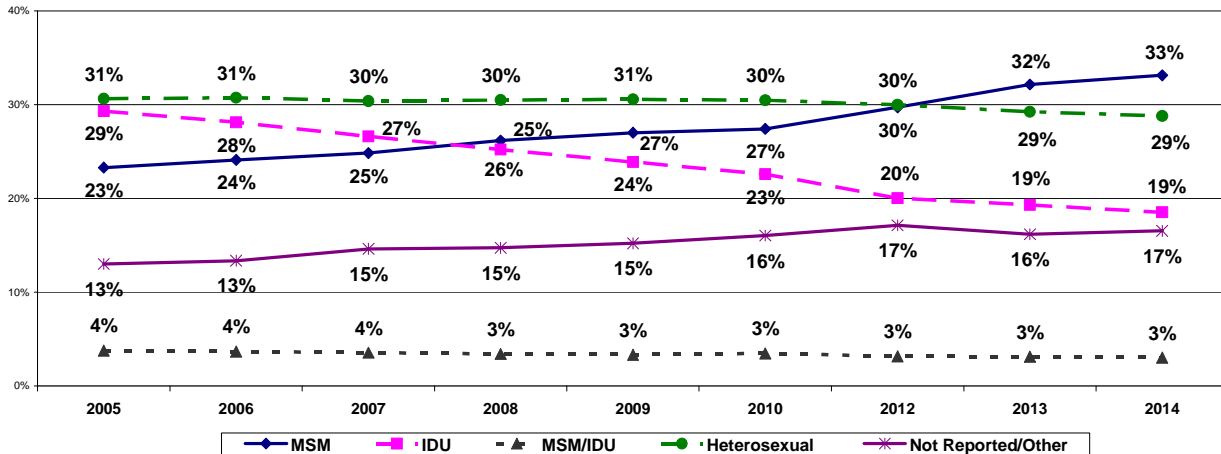


Figure 16: Female PLWHA in Newark EMA by Transmission Mode 2005 - 2014

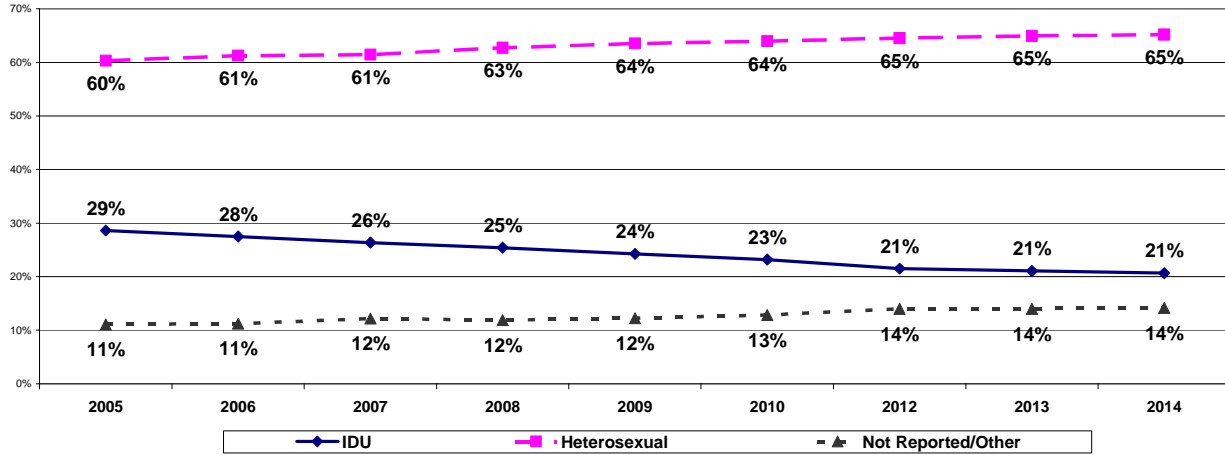
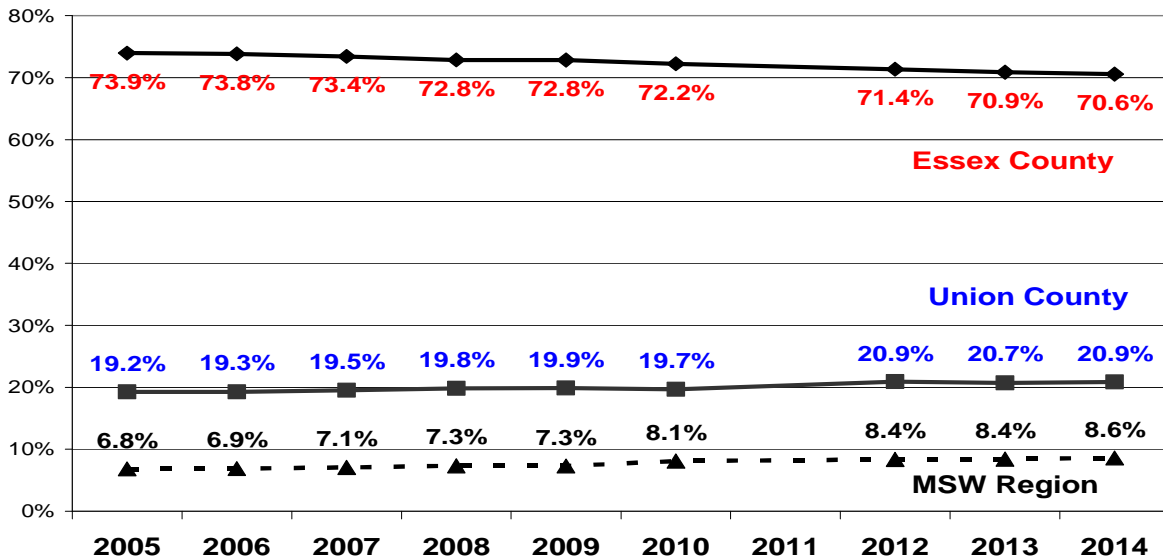


Figure 17: Distribution of PLWHA in Newark EMA by County/Region 2005 - 2014



DATA TABLES 2014

The tables below show the actual data and percentages for the EMA and five counties and Morris, Sussex, Warren Region. Data are from NJDOH Division of HIV/AIDS.

NEWARK EMA	AS OF DECEMBER 31, 2014					
	Number			Percent		
	Male	Female	Total	Male	Female	Total
Disease Category				62.5%	37.5%	100.0%
HIV	4,074	2,511	6,585	46.7%	48.0%	47.2%
AIDS	4,654	2,719	7,373	53.3%	52.0%	52.8%
Total	8,728	5,230	13,958	100.0%	100.0%	100.0%
AIDS Total	4,654	2,719	7,373	53.3%	52.0%	52.8%
Current Age	63%		6,585			
< 13	17	21	38	0.2%	0.4%	0.3%
13 - 24	275	171	446	3.2%	3.3%	3.2%
25 - 34	969	412	1,381	11.1%	7.9%	9.9%
35 - 44	1,399	1,025	2,424	16.0%	19.6%	17.4%
45 - 54	2,867	1,923	4,790	32.8%	36.8%	34.3%
55+	3,201	1,678	4,879	36.7%	32.1%	35.0%
Total	8,728	5,230	13,958	100.0%	100.0%	100.0%
Age 45+	6,068	3,601	9,669	69.5%	68.9%	69.3%
Race/Ethnicity			3,805			
Hispanic	1,954	812	2,766	22.4%	15.5%	19.8%
Black, Not Hispanic	5,389	3,972	9,361	61.7%	75.9%	67.1%
White, Not Hispanic	1,293	402	1,695	14.8%	7.7%	12.1%
Other/Unknown	92	44	136	1.1%	0.8%	1.0%
Total	8,728	5,230	13,958	100.0%	100.0%	100.0%
R/E Minority	7,343	4,784	12,127	84.1%	91.5%	86.9%
Transmission Category						
MSM	2,891	0	2,891	33.1%	0.0%	20.7%
IDU	1,617	1,080	2,697	18.5%	20.7%	19.3%
MSM/IDU	264	0	264	3.0%	0.0%	1.9%
Heterosexual	2,513	3,408	5,921	28.8%	65.2%	42.4%
Not Reported/Other	1,443	742	2,185	16.5%	14.2%	15.7%
Total	8,728	5,230	13,958	100.0%	100.0%	100.0%

ESSEX COUNTY	AS OF DECEMBER 31, 2014					
	Number			Percent		
	Male	Female	Total	Male	Female	Total
<i>Disease Category</i>				60.8%	39.2%	100.0%
HIV	2,876	1,904	4,780	48.0%	49.4%	48.5%
AIDS	3,115	1,953	5,068	52.0%	50.6%	51.5%
Total	5,991	3,857	9,848	100.0%	100.0%	100.0%
<i>AIDS Total</i>	3,115	1,953	5,068	52.0%	50.6%	51.5%
<i>Current Age</i>						
< 13	14	15	29	0.2%	0.4%	0.3%
13 - 24	213	130	343	3.6%	3.4%	3.5%
25 - 34	685	307	992	11.4%	8.0%	10.1%
35 - 44	947	791	1,738	15.8%	20.5%	17.6%
45 - 54	1,925	1,405	3,330	32.1%	36.4%	33.8%
55+	2,207	1,209	3,416	36.8%	31.3%	34.7%
Total	5,991	3,857	9,848	100.0%	100.0%	100.0%
<i>Age 45+</i>	4,132	2,614	6,746	69.0%	67.8%	68.5%
<i>Race/Ethnicity</i>						
Hispanic	1,131	504	1,635	18.9%	13.1%	16.6%
Black, Not Hispanic	4,304	3,172	7,476	71.8%	82.2%	75.9%
White, Not Hispanic	506	148	654	8.4%	3.8%	6.6%
Other/Unknown	50	33	83	0.8%	0.9%	0.8%
Total	5,991	3,857	9,848	100.0%	100.0%	100.0%
<i>R/E Minority</i>	5,435	3,676	9,111	90.7%	95.3%	92.5%
<i>Transmission Category</i>						
MSM	1,834	0	1,834	30.6%	0.0%	18.6%
IDU	1,190	832	2,022	19.9%	21.6%	20.5%
MSM/IDU	185	0	185	3.1%	0.0%	1.9%
Heterosexual	1,766	2,474	4,240	29.5%	64.1%	43.1%
Not Reported/Other	1,016	551	1,567	17.0%	14.3%	15.9%
Total	5,991	3,857	9,848	100.0%	100.0%	100.0%

MORRIS COUNTY	AS OF DECEMBER 31, 2014					
	Number			Percent		
	Male	Female	Total	Male	Female	Total
<i>Disease Category</i>				73.1%	26.9%	100.0%
HIV	284	107	391	45.7%	46.7%	46.0%
AIDS	337	122	459	54.3%	53.3%	54.0%
Total	621	229	850	100.0%	100.0%	100.0%
<i>AIDS Total</i>	337	122	459	54.3%	53.3%	54.0%
<i>Current Age</i>						
< 13	0	0	0	0.0%	0.0%	0.0%
13 - 24	11	6	17	1.8%	2.6%	2.0%
25 - 34	64	14	78	10.3%	6.1%	9.2%
35 - 44	99	28	127	15.9%	12.2%	14.9%
45 - 54	225	95	320	36.2%	41.5%	37.6%
55+	222	86	308	35.7%	37.6%	36.2%
Total	621	229	850	100.0%	100.0%	100.0%
<i>Age 45+</i>	447	181	628	72.0%	79.0%	73.9%
<i>Race/Ethnicity</i>						
Hispanic	166	54	220	26.7%	23.6%	25.9%
Black, Not Hispanic	130	70	200	20.9%	30.6%	23.5%
White, Not Hispanic	309	101	410	49.8%	44.1%	48.2%
Other/Unknown	16	4	20	2.6%	1.7%	2.4%
Total	621	229	850	100.0%	100.0%	100.0%
<i>R/E Minority</i>	296	124	420	47.7%	54.1%	49.4%
<i>Transmission Category</i>						
MSM	289	0	289	46.5%	0.0%	34.0%
IDU	90	50	140	14.5%	21.8%	16.5%
MSM/IDU	18	0	18	2.9%	0.0%	2.1%
Heterosexual	125	152	277	20.1%	66.4%	32.6%
Not Reported/Other	99	27	126	15.9%	11.8%	14.8%
Total	621	229	850	100.0%	100.0%	100.0%

SUSSEX COUNTY	AS OF DECEMBER 31, 2014					
	Number			Percent		
	Male	Female	Total	Male	Female	Total
<i>Disease Category</i>				65.1%	34.9%	100.0%
HIV	42	28	70	38.9%	48.3%	42.2%
AIDS	66	30	96	61.1%	51.7%	57.8%
Total	108	58	166	100.0%	100.0%	100.0%
<i>AIDS Total</i>	66	30	96	61.1%	51.7%	57.8%
<i>Current Age</i>						
< 13	0	0	0	0.0%	0.0%	0.0%
13 - 24	1	4	5	0.9%	6.9%	3.0%
25 - 34	5	0	5	4.6%	0.0%	3.0%
35 - 44	19	10	29	17.6%	17.2%	17.5%
45 - 54	41	29	70	38.0%	50.0%	42.2%
55+	42	15	57	38.9%	25.9%	34.3%
Total	108	58	166	100.0%	100.0%	100.0%
<i>Age 45+</i>	83	44	127	76.9%	75.9%	76.5%
<i>Race/Ethnicity</i>						
Hispanic	19	8	27	17.6%	13.8%	16.3%
Black, Not Hispanic	13	16	29	12.0%	27.6%	17.5%
White, Not Hispanic	76	34	110	70.4%	58.6%	66.3%
Other/Unknown	0	0	0	0.0%	0.0%	0.0%
Total	108	58	166	100.0%	100.0%	100.0%
<i>R/E Minority</i>	32	24	56	29.6%	41.4%	33.7%
<i>Transmission Category</i>						
MSM	48	0	48	44.4%	0.0%	28.9%
IDU	13	12	25	12.0%	20.7%	15.1%
MSM/IDU	3	0	3	2.8%	0.0%	1.8%
Heterosexual	20	40	60	18.5%	69.0%	36.1%
Not Reported/Other	24	6	30	22.2%	10.3%	18.1%
Total	108	58	166	100.0%	100.0%	100.0%

UNION COUNTY	AS OF DECEMBER 31, 2014					
	Number			Percent		
	Male	Female	Total	Male	Female	Total
<i>Disease Category</i>				64.6%	35.4%	100.0%
HIV	815	445	1,260	43.3%	43.2%	43.3%
AIDS	1,068	585	1,653	56.7%	56.8%	56.7%
Total	1,883	1,030	2,913	100.0%	100.0%	100.0%
<i>AIDS Total</i>	1,068	585	1,653	56.7%	56.8%	56.7%
<i>Current Age</i>						
< 13	3	5	8	0.2%	0.5%	0.3%
13 - 24	50	30	80	2.7%	2.9%	2.7%
25 - 34	205	85	290	10.9%	8.3%	10.0%
35 - 44	317	184	501	16.8%	17.9%	17.2%
45 - 54	632	370	1,002	33.6%	35.9%	34.4%
55+	676	356	1,032	35.9%	34.6%	35.4%
Total	1,883	1,030	2,913	100.0%	100.0%	100.0%
<i>Age 45+</i>	1,308	726	2,034	69.5%	70.5%	69.8%
<i>Race/Ethnicity</i>						
Hispanic	612	232	844	32.5%	22.5%	29.0%
Black, Not Hispanic	920	698	1,618	48.9%	67.8%	55.5%
White, Not Hispanic	329	93	422	17.5%	9.0%	14.5%
Other/Unknown	22	7	29	1.2%	0.7%	1.0%
Total	1,883	1,030	2,913	100.0%	100.0%	100.0%
<i>R/E Minority</i>	1,532	930	2,462	81.4%	90.3%	84.5%
<i>Transmission Category</i>						
MSM	681	0	681	36.2%	0.0%	23.4%
IDU	295	171	466	15.7%	16.6%	16.0%
MSM/IDU	54	0	54	2.9%	0.0%	1.9%
Heterosexual	572	708	1,280	30.4%	68.7%	43.9%
Not Reported/Other	281	151	432	14.9%	14.7%	14.8%
Total	1,883	1,030	2,913	100.0%	100.0%	100.0%

WARREN COUNTY	AS OF DECEMBER 31, 2014					
	Number			Percent		
	Male	Female	Total	Male	Female	Total
<i>Disease Category</i>				69.1%	30.9%	100.0%
HIV	57	27	84	45.6%	48.2%	46.4%
AIDS	68	29	97	54.4%	51.8%	53.6%
Total	125	56	181	100.0%	100.0%	100.0%
<i>AIDS Total</i>	68	29	97	54.4%	51.8%	53.6%
<i>Current Age</i>						
< 13	0	1	1	0.0%	1.8%	0.6%
13 - 24	0	1	1	0.0%	1.8%	0.6%
25 - 34	10	6	16	8.0%	10.7%	8.8%
35 - 44	17	12	29	13.6%	21.4%	16.0%
45 - 54	44	24	68	35.2%	42.9%	37.6%
55+	54	12	66	43.2%	21.4%	36.5%
Total	125	56	181	100.0%	100.0%	100.0%
<i>Age 45+</i>	98	36	134	78.4%	64.3%	74.0%
<i>Race/Ethnicity</i>						
Hispanic	26	14	40	20.8%	25.0%	22.1%
Black, Not Hispanic	22	16	38	17.6%	28.6%	21.0%
White, Not Hispanic	73	26	99	58.4%	46.4%	54.7%
Other/Unknown	4	0	4	3.2%	0.0%	2.2%
Total	125	56	181	100.0%	100.0%	100.0%
<i>R/E Minority</i>	48	30	78	38.4%	53.6%	43.1%
<i>Transmission Category</i>						
MSM	39	0	39	31.2%	0.0%	21.5%
IDU	29	15	44	23.2%	26.8%	24.3%
MSM/IDU	4	0	4	3.2%	0.0%	2.2%
Heterosexual	30	34	64	24.0%	60.7%	35.4%
Not Reported/Other	23	7	30	18.4%	12.5%	16.6%
Total	125	56	181	100.0%	100.0%	100.0%

MORRIS, SUSSEX, WARREN COS.	AS OF DECEMBER 31, 2014					
	Number			Percent		
	Male	Female	Total	Male	Female	Total
<i>Disease Category</i>				71.3%	28.7%	100.0%
HIV	383	162	545	44.8%	47.2%	45.5%
AIDS	471	181	652	55.2%	52.8%	54.5%
Total	854	343	1,197	100.0%	100.0%	100.0%
<i>AIDS Total</i>	471	181	652	55.2%	52.8%	54.5%
<i>Current Age</i>						
< 13	0	1	1	0.0%	0.3%	0.1%
13 - 24	12	11	23	1.4%	3.2%	1.9%
25 - 34	79	20	99	9.3%	5.8%	8.3%
35 - 44	135	50	185	15.8%	14.6%	15.5%
45 - 54	310	148	458	36.3%	43.1%	38.3%
55+	318	113	431	37.2%	32.9%	36.0%
Total	854	343	1,197	100.0%	100.0%	100.0%
<i>Age 45+</i>	628	261	889	73.5%	76.1%	74.3%
<i>Race/Ethnicity</i>						
Hispanic	211	76	287	24.7%	22.2%	24.0%
Black, Not Hispanic	165	102	267	19.3%	29.7%	22.3%
White, Not Hispanic	458	161	619	53.6%	46.9%	51.7%
Other/Unknown	20	4	24	2.3%	1.2%	2.0%
Total	854	343	1,197	100.0%	100.0%	100.0%
<i>R/E Minority</i>	376	178	554	44.0%	51.9%	46.3%
<i>Transmission Category</i>						
MSM	376	0	376	44.0%	0.0%	31.4%
IDU	132	77	209	15.5%	22.4%	17.5%
MSM/IDU	25	0	25	2.9%	0.0%	2.1%
Heterosexual	175	226	401	20.5%	65.9%	33.5%
Not Reported/Other	146	40	186	17.1%	11.7%	15.5%
Total	854	343	1,197	100.0%	100.0%	100.0%