

# Phase Driver UPS

## Single Phase 240V to 3 Phase 415V Motor Inverter with Optional UPS Backup



### PERSONNEL SAFETY SOLUTION:

#### BATTERY BACK UP OF CRITICAL 3 PHASE MOTORS IN THE EVENT OF A POWER OUTAGE

The Phase Driver UPS system provides 3 phase 415V power to operate roller doors, fire doors and shutters from a single phase 240V supply.

The 240V supply can be backed up with a standard 240V UPS (Uninterruptible Power Supply) to ensure any critical application will continue to operate in the event of a power blackout.

### SIMPLE TO INSTALL

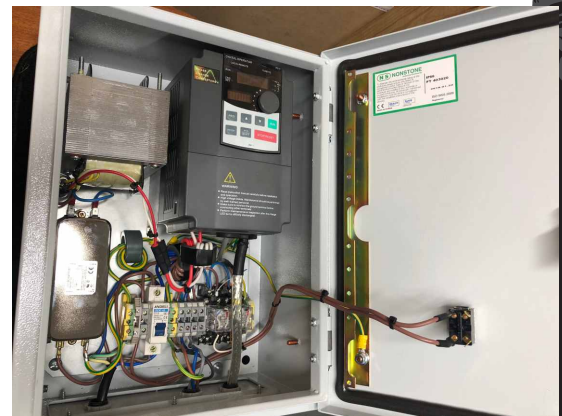
Designed to interface into any existing or planned control system, Phase Driver is powered from a 240V single phase supply. Utility 3 phase is not required. Straightforward and fast installation, with only supply, motor and two control signals to be interconnected between the existing control box and the Phase Driver UPS.

### 415V THREE PHASE FROM 240V SINGLE PHASE

Only single phase 240V power is required to operate 415V three phase doors and equipment once connected to the Phase Driver UPS system. Using inverter VSD technology, the system is preprogrammed to 'soft start' the three phase motor, providing smoother and quieter operation of roller doors and shutters.

### STANDARD UPS ONLY

Using a standard 240V single phase UPS, the Phase Driver system can continue to operate, providing both 240V and 415V auxiliary supply to power the existing door control system and 415V three phase to the load motor for extensive periods in the event of a mains power blackout. Selection of the UPS is based on load motor size and the time the load must be operated. **Suggested models for standard applications from UPSONIC are shown in the chart overleaf.**



### EMC CERTIFIED

#### AS/NZS 61000.6.3: 2012

Electromagnetic Compatibility (EMC):

- ✓ Radiated RF emission measurements
- ✓ Mains terminal disturbance voltage measurements

EMC Approval:

Tested and Approved Operating with a \*\*Grifco eDrive +2.0 Model ML5103L, 3 phase 415V (combined motor/controller)

NOTE: INSTALLATION GUIDELINES IN MANUAL MUST BE FOLLOWED.

\*\*When used to operate a Grifco eDrive door system, additional shielding of the eDrive is required, due to the physical proximity of the motor and the electronic circuit board. Instructions and a simple shielding kit can be supplied on request.



### UNIQUE BENEFITS

- ✓ Run critical 3 phase applications, like roller doors, roller shutters, fire doors and personal access doors, during a blackout
- ✓ Economical to purchase and install when compared to alternative 3 phase backup systems
- ✓ Long running time (dependent on capacity of the UPS selected)
- ✓ Smoother running with less starting stress on mechanical components
- ✓ Three Phase utility supply not required at all
- ✓ Aux 240V and 415V outputs available to power control circuits of door controller (independent of VSD motor output).



Available From:

DESIGNED AND MANUFACTURED BY:  
PHASE CHANGE CONVERTERS  
6/4 BORMAR DRIVE, PAKENHAM, VIC 3810 T 03 5940 8985 F 03 9445 9274 info@phasechanger.com.au

PHASECHANGER.COM.AU

# PHASE DRIVER MODEL SPECIFICATIONS

UPS for motors up to 1.1KW  
UPSONIC DSV2000



## MODELS FROM 1.1KW to 7.5KW

## 415V THREE PHASE OUTPUT



PHASE DRIVER MODEL	PHASE DRIVER DESCRIPTION	240V Input Circuit Breaker Rating	PHASE DRIVER DIMENSIONS	SUGGESTED UPSONIC UPS	UPS RATING	UPS DIMENSIONS	UPS WEIGHT
PD1.1 R240 *	3 phase motor to 1.1KW / 1.5HP max. 240V/415V control inputs**	D10	40x30x20cm	<b>DSV2000</b>	2000VA /1200W	364D x139W x195H mm	10.9KG
PD1.1 VF *	3 phase motor to 1.1KW / 1.5HP max. Voltage free contact closure control inputs	D10	40x30x20cm	<b>DSV2000</b>	2000VA /1200W	364D x139W x195H mm	10.9KG
PD1.5 R240 *	3 phase motor to 1.5KW / 2HP max. 240V/415V control inputs**	D10	50x40x25cm	<b>ESART2000</b>	2000VA /1800W	438H x87W x608D mm	27.8KG
PD1.5 VF *	3 phase motor to 1.5KW / 2HP max. Voltage free contact closure control inputs	D10	50x40x25cm	<b>ESART2000</b>	2000VA /1800W	438H x87W x608D mm	27.8KG
PD2.2 R240 *	3 phase motor to 2.2KW / 3HP max. 240V/415V control inputs**	D16	50x40x25cm	<b>ESART3000</b>	3000VA /2700W	438H x87W x608D mm	27.8KG
PD2.2 VF *	3 phase motor to 2.2KW / 3HP max. Voltage free contact closure control inputs	D16	50x40x25cm	<b>ESART3000</b>	3000VA /2700W	438H x87W x608D mm	27.8KG
PD4.0 R240 *	3 phase motor to 4KW / 5.5HP max. 240V/415V control inputs**	D25	50x50x25cm	<b>UM-IP6000HTS</b>	6000VA /6000W	190W x 426D x 705H	56KG
PD4.0 VF *	3 phase motor to 4KW / 5.5HP max. Voltage free contact closure control inputs	D25	50x50x25cm	<b>UM-IP6000HTS</b>	6000VA /6000W	190W x 426D x 705H	56KG
PD7.5 R240 *	3 phase motor to 7.5KW / 10HP max. 240V/415V control inputs**	D40	60x50x25cm	<b>UM-IP10000HTS</b>	10000VA /10000W	190W x 485D x 705H	60KG
PD7.5 VF *	3 phase motor to 7.5KW / 10HP max. Voltage free contact closure control inputs	D40	60x50x25cm	<b>UM-IP10000HTS</b>	10000VA /10000W	190W x 485D x 705H	60KG

### PRODUCT FEATURES

- ✍ 240V single phase to 415V three phase, for 3 phase motors
- ✍ Inverter VSD controlled with motor soft start
- ✍ Suitable for ANY control system that uses contactors for motor switching
- ✍ Easy to interface to 240V and 415V control systems
- ✍ Existing door controls such as buttons, limits and protection devices remain untouched and functional
- ✍ Various models for three phase motors up to 7.5KW or 10HP
- ✍ Full assembled and preprogrammed to match your motors specification
- ✍ Steel enclosure with DIN input and output terminals
- ✍ Australian designed and manufactured