

PROPERTY DETAILS

Available: ±14,122 SF Industrial Warehouse
on ±31,561 SF of Land

Rate: \$1.68 / SF Gross

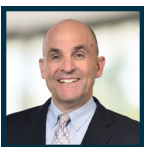
Term: 1-3 years

Zoning: IG

APN#: 7121-011-025

- Two (2) Dock High and One (1) Ground Level Doors
- 17' Minimum Clearance Height
- 800 Amps, 277/480 Volts, 3 Phase
- Large Fenced / Paved Yard
- 24 Parking Stalls

LOCAL EXPERTISE. INTERNATIONAL REACH. WORLD CLASS.



Ron Mgrublian

Principal | DRE# 01902882

P: +1(562)354-2537

E: rmgrublian@leelalb.com

CONNECT WITH US ON OUR SOCIALS!



www.lee-associates.com



@leeassociateslalb



@leeassociateslalb

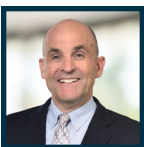


@LeeAssociatesLA

Copyright © Lee & Associates. All rights reserved. No part of this work may be reproduced or distributed without written permission of the copyright owner. The information contained in this report was gathered by Lee & Associates from sources believed to be reliable. Lee & Associates, however, makes no representation concerning the accuracy or completeness of such information and expressly disclaims any responsibility for any inaccuracy contained herein.



LOCAL EXPERTISE. INTERNATIONAL REACH. WORLD CLASS.



Ron Mgrublian

Principal | DRE# 01902882

P: +1(562)354-2537

E: rmgrublian@leelalb.com

CONNECT WITH US ON OUR SOCIALS!



www.lee-associates.com



@leeassociateslalb



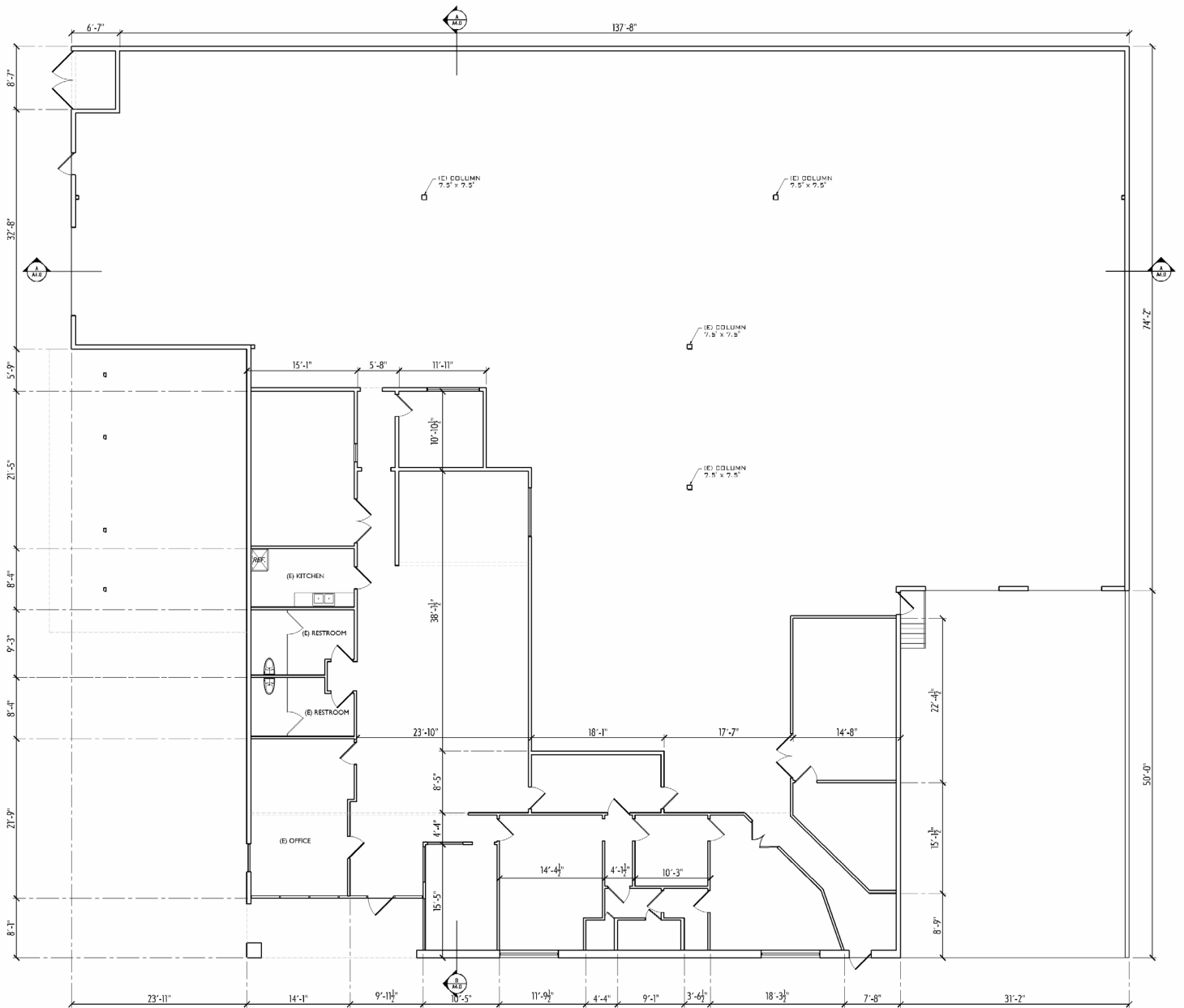
@leeassociateslalb



@LeeAssociatesLA

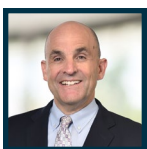
Copyright © Lee & Associates. All rights reserved. No part of this work may be reproduced or distributed without written permission of the copyright owner. The information contained in this report was gathered by Lee & Associates from sources believed to be reliable. Lee & Associates, however, makes no representation concerning the accuracy or completeness of such information and expressly disclaims any responsibility for any inaccuracy contained herein.

FLOOR PLAN (NOT TO SCALE)



(E) 1st FLOOR PLAN

LOCAL EXPERTISE. INTERNATIONAL REACH. WORLD CLASS.



Ron Mgrublian
Principal | DRE# 01902882
P: +1(562)354-2537
E: rmgrublian@leelalb.com

CONNECT WITH US ON OUR SOCIALS!



www.lee-associates.com



@leeassociateslalb



@leeassociateslalb



@LeeAssociatesLA

Copyright © Lee & Associates. All rights reserved. No part of this work may be reproduced or distributed without written permission of the copyright owner. The information contained in this report was gathered by Lee & Associates from sources believed to be reliable. Lee & Associates, however, makes no representation concerning the accuracy or completeness of such information and expressly disclaims any responsibility for any inaccuracy contained herein.