



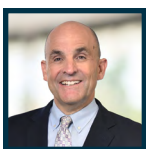
PROPERTY DETAILS

- Available:** ±20,847 SF Industrial Warehouse/
Manufacturing Building on
±40,847 SF of Land
- Rate:** \$0.85 / SF Gross for the first 6 months,
\$1.70 thereafter
- Term:** 3-5 years
- Zoning:** I-C
- APN#:** 8550-005-061

- High Image/
Freeway Visibility
- Two (2) Dock High
- Three (3) Ground
Level Doors
- 42 Parking Spaces
- Large Fenced /
Paved Yard
- 1240 Amps
- 28' Minimum
Clearance Height

TAKE A TOUR

LOCAL EXPERTISE. INTERNATIONAL REACH. WORLD CLASS.

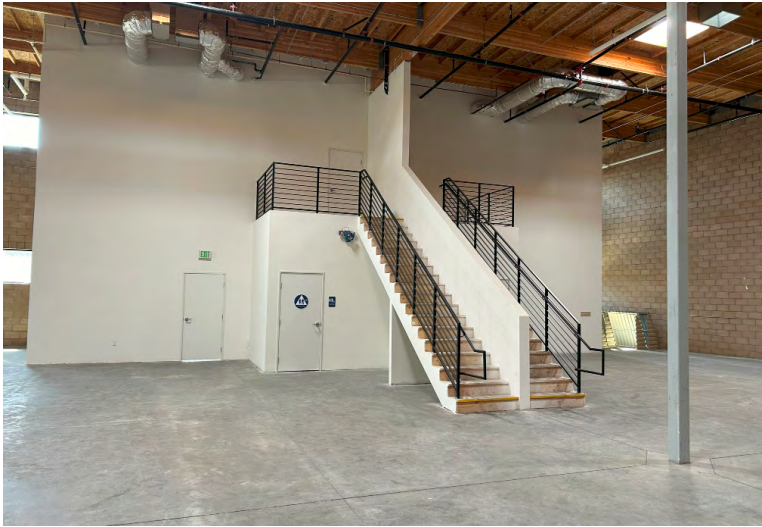


Ron Mgrublian
Principal | DRE# 01902882
P: +1(562)354-2537
E: rmgrublian@leelalb.com

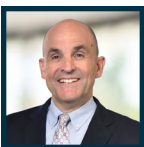
CONNECT WITH US ON OUR SOCIALS!

- www.lee-associates.com
- @leeassociateslalb
- @leeassociateslalb
- @LeeAssociatesLA

Copyright © Lee & Associates. All rights reserved. No part of this work may be reproduced or distributed without written permission of the copyright owner. The information contained in this report was gathered by Lee & Associates from sources believed to be reliable. Lee & Associates, however, makes no representation concerning the accuracy or completeness of such information and expressly disclaims any responsibility for any inaccuracy contained herein.



LOCAL EXPERTISE. INTERNATIONAL REACH. WORLD CLASS.



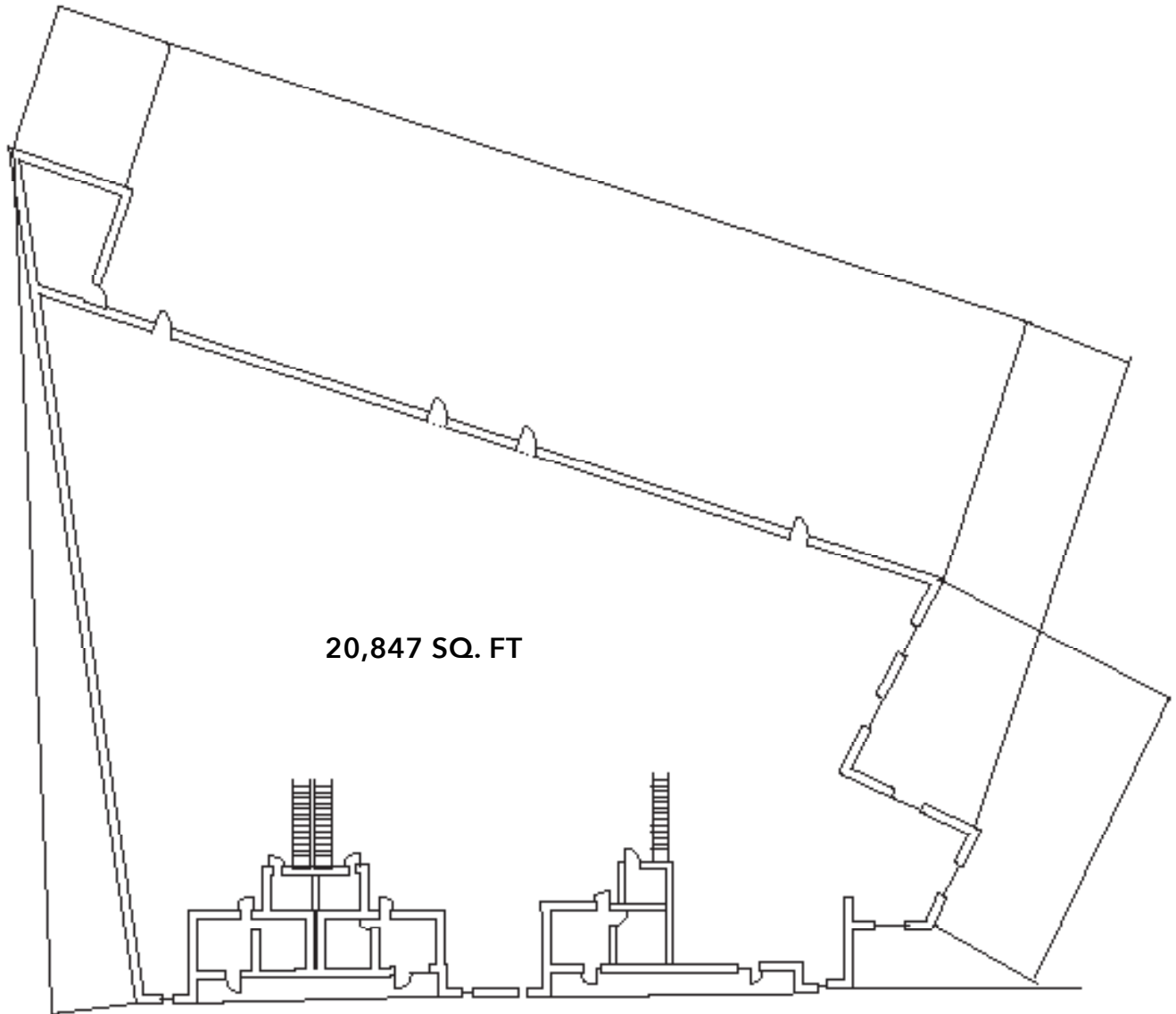
Ron Mgrublian
Principal | DRE# 01902882
P: +1(562)354-2537
E: rmgrublian@leelalb.com

CONNECT WITH US ON OUR SOCIALS!

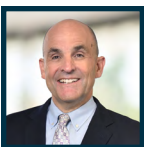
 www.lee-associates.com  @leeassociateslalb
 @leeassociateslalb  @LeeAssociatesLA

Copyright © Lee & Associates. All rights reserved. No part of this work may be reproduced or distributed without written permission of the copyright owner. The information contained in this report was gathered by Lee & Associates from sources believed to be reliable. Lee & Associates, however, makes no representation concerning the accuracy or completeness of such information and expressly disclaims any responsibility for any inaccuracy contained herein.

FLOOR PLANS: (NOT TO SCALE)



LOCAL EXPERTISE. INTERNATIONAL REACH. WORLD CLASS.



Ron Mgrublian

Principal | DRE# 01902882

P: +1(562)354-2537

E: rmgrublian@leelalb.com

CONNECT WITH US ON OUR SOCIALS!



www.lee-associates.com



@leeassociateslalb



@leeassociateslalb



@LeeAssociatesLA

Copyright © Lee & Associates. All rights reserved. No part of this work may be reproduced or distributed without written permission of the copyright owner. The information contained in this report was gathered by Lee & Associates from sources believed to be reliable. Lee & Associates, however, makes no representation concerning the accuracy or completeness of such information and expressly disclaims any responsibility for any inaccuracy contained herein.