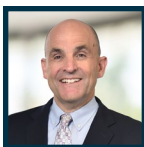


PROPERTY SUMMARY

AVAILABLE: ± 19,937 SF Lot
LEASE RATE: \$0.30 / SF gross (\$5,981.10 /Mo)
APN#: 8335-003-055
TERM: 3-5 Years
ZONING: IX1

- Fenced and Paved Yard
- Gated Entrance
- Light Industrial Uses
- Close to 10, 71 and 60 Freeways

LOCAL EXPERTISE. INTERNATIONAL REACH. WORLD CLASS.

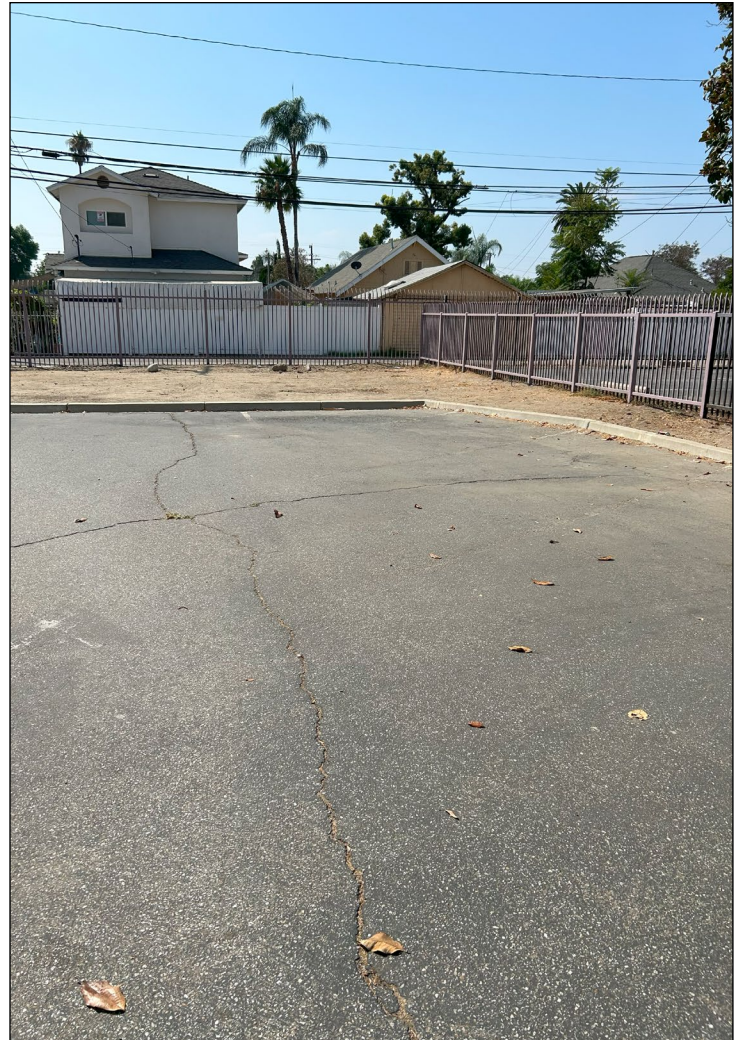


Ron Mgrublian
Principal | DRE# 01902882
P: +1(562)354-2537
E: rmgrublian@leelalb.com

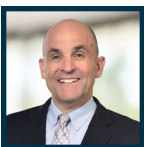
CONNECT WITH US ON OUR SOCIALS!

www.lee-associates.com @leeassociateslalb
 @leeassociateslalb @LeeAssociatesLA

Copyright © Lee & Associates. All rights reserved. No part of this work may be reproduced or distributed without written permission of the copyright owner. The information contained in this report was gathered by Lee & Associates from sources believed to be reliable. Lee & Associates, however, makes no representation concerning the accuracy or completeness of such information and expressly disclaims any responsibility for any inaccuracy contained herein.



LOCAL EXPERTISE. INTERNATIONAL REACH. WORLD CLASS.



Ron Mgrublian
Principal | DRE# 01902882
P: +1(562)354-2537
E: rmgrublian@leelalb.com

CONNECT WITH US ON OUR SOCIALS!

 www.lee-associates.com  @leeassociateslab
 @leeassociateslab  @LeeAssociatesLA

Copyright © Lee & Associates. All rights reserved. No part of this work may be reproduced or distributed without written permission of the copyright owner. The information contained in this report was gathered by Lee & Associates from sources believed to be reliable. Lee & Associates, however, makes no representation concerning the accuracy or completeness of such information and expressly disclaims any responsibility for any inaccuracy contained herein.