



PROPERTY SUMMARY

BUILDING SIZE: ±18,000SF
LOT SIZE: ± 36,000 SF Lot Land
ASKING PRICE: \$298 PSF (\$5,364,000.00)
APN#: 6129-006-020 & 6129-006-021
ZONING: LA Unincorporated M2

- Free Standing Industrial Building
- Fenced/Paved Yard area
- No City Business Tax
- 3 Ground Level Doors/4 Bathrooms
- Solar Lighting
- Bonus Unfinished Mezzanine
- Glass Kiln/Oven
- Close to 110, 405, 91 and 105 Freeways

LOCAL EXPERTISE. INTERNATIONAL REACH. WORLD CLASS.



Ron Mgrublian
Principal | DRE# 01902882
P: +1(562)354-2537
E: rmgrublian@leelalb.com

CONNECT WITH US ON OUR SOCIALS!

www.lee-associates.com [@leeassociateslab](https://www.facebook.com/leeassociateslab)
[@leeassociateslab](https://www.instagram.com/leeassociateslab) [@LeeAssociatesLA](https://www.linkedin.com/company/lee-associates)

Copyright © Lee & Associates. All rights reserved. No part of this work may be reproduced or distributed without written permission of the copyright owner. The information contained in this report was gathered by Lee & Associates from sources believed to be reliable. Lee & Associates, however, makes no representation concerning the accuracy or completeness of such information and expressly disclaims any responsibility for any inaccuracy contained herein.



LOCAL EXPERTISE. INTERNATIONAL REACH. WORLD CLASS.



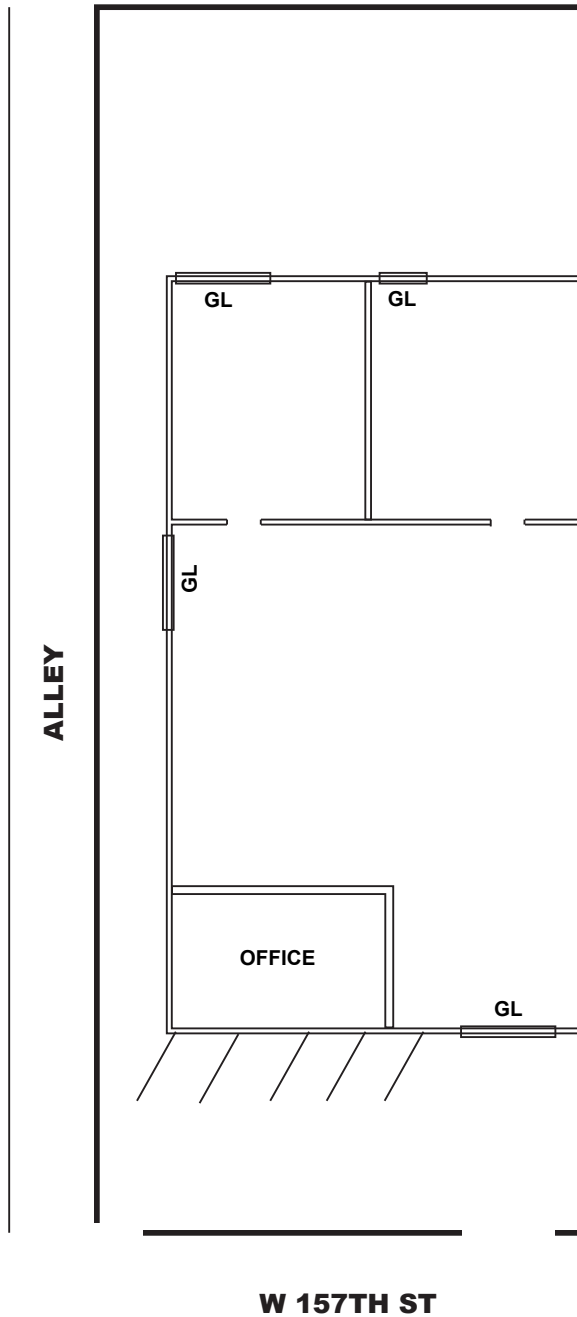
Ron Mgrublian
Principal | DRE# 01902882
P: +1(562)354-2537
E: rmgrublian@leelalb.com

CONNECT WITH US ON OUR SOCIALS!

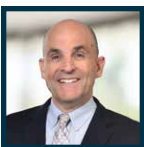
 www.lee-associates.com
 @leeassociateslab
 @leeassociateslab
  @LeeAssociatesLA

Copyright © Lee & Associates. All rights reserved. No part of this work may be reproduced or distributed without written permission of the copyright owner. The information contained in this report was gathered by Lee & Associates from sources believed to be reliable. Lee & Associates, however, makes no representation concerning the accuracy or completeness of such information and expressly disclaims any responsibility for any inaccuracy contained herein.

FLOOR PLAN (NOT DRAWN TO SCALE)



LOCAL EXPERTISE. INTERNATIONAL REACH. WORLD CLASS.



Ron Mgrublian
Principal | DRE# 01902882
P: +1(562)354-2537
E: rmgrublian@leelalb.com

CONNECT WITH US ON OUR SOCIALS!

 www.lee-associates.com  @leeassociateslab
 @leeassociateslab  @LeeAssociatesLA

Copyright © Lee & Associates. All rights reserved. No part of this work may be reproduced or distributed without written permission of the copyright owner. The information contained in this report was gathered by Lee & Associates from sources believed to be reliable. Lee & Associates, however, makes no representation concerning the accuracy or completeness of such information and expressly disclaims any responsibility for any inaccuracy contained herein.