

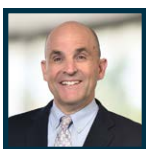


## PROPERTY SUMMARY

**BUILDING SIZE:** ±18,000SF  
**LOT SIZE:** ± 36,000 SF Lot Land  
**ASKING PRICE:** \$298 PSF (\$5,364,000.00)  
**APN#:** 6129-006-020 & 6129-006-021  
**ZONING:** LA Unincorporated M2

- Free Standing Industrial Building
- Fenced/Paved Yard area
- No City Business Tax
- 3 Ground Level Doors/4 Bathrooms
- Solar Lighting
- Bonus Unfinished Mezzanine
- Dock High Possible
- Glass Kiln/Oven
- Close to 110, 405, 91 and 105 Freeways

LOCAL EXPERTISE. INTERNATIONAL REACH. WORLD CLASS.



**Ron Mgrublian**  
Principal | DRE# 01902882  
P: +1(562)354-2537  
E: rmgrublian@leelalb.com

CONNECT WITH US ON OUR SOCIALS!

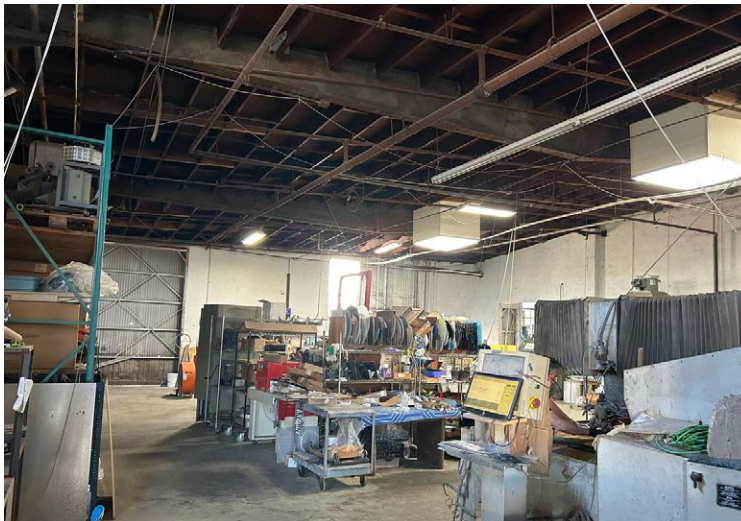
www.lee-associates.com @leeassociateslalb  
 @leeassociateslalb @LeeAssociatesLA

Copyright © Lee & Associates. All rights reserved. No part of this work may be reproduced or distributed without written permission of the copyright owner. The information contained in this report was gathered by Lee & Associates from sources believed to be reliable. Lee & Associates, however, makes no representation concerning the accuracy or completeness of such information and expressly disclaims any responsibility for any inaccuracy contained herein.

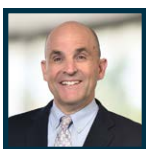


# INDUSTRIAL FOR SALE

125 W. 157TH ST, GARDENA, CA 90248



LOCAL EXPERTISE. INTERNATIONAL REACH. WORLD CLASS.



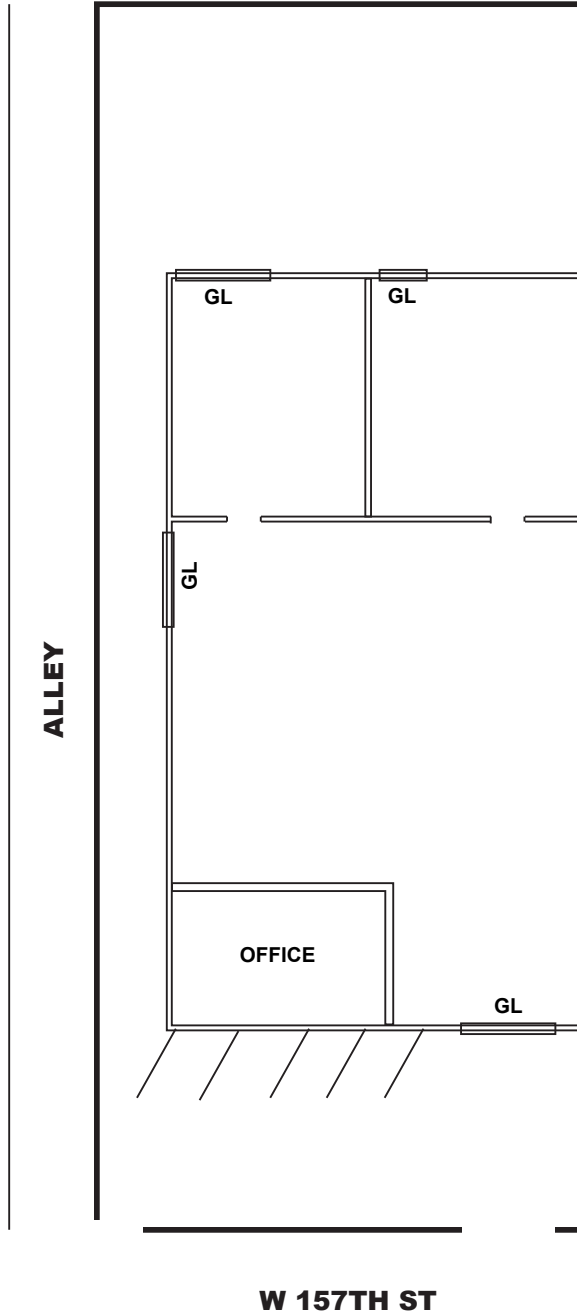
**Ron Mgrublian**  
Principal | DRE# 01902882  
P: +1(562)354-2537  
E: rmgrublian@leelalb.com

CONNECT WITH US ON OUR SOCIALS!

 [www.lee-associates.com](http://www.lee-associates.com)  @leeassociateslab  
 @leeassociateslab  @LeeAssociatesLA

Copyright © Lee & Associates. All rights reserved. No part of this work may be reproduced or distributed without written permission of the copyright owner. The information contained in this report was gathered by Lee & Associates from sources believed to be reliable. Lee & Associates, however, makes no representation concerning the accuracy or completeness of such information and expressly disclaims any responsibility for any inaccuracy contained herein.

## FLOOR PLAN (NOT DRAWN TO SCALE)



LOCAL EXPERTISE. INTERNATIONAL REACH. WORLD CLASS.



**Ron Mgrublian**  
Principal | DRE# 01902882  
P: +1(562)354-2537  
E: rmgrublian@leelalb.com

### CONNECT WITH US ON OUR SOCIALS!

 [www.lee-associates.com](http://www.lee-associates.com)  @leeassociateslalb  
 @leeassociateslalb  @LeeAssociatesLA

Copyright © Lee & Associates. All rights reserved. No part of this work may be reproduced or distributed without written permission of the copyright owner. The information contained in this report was gathered by Lee & Associates from sources believed to be reliable. Lee & Associates, however, makes no representation concerning the accuracy or completeness of such information and expressly disclaims any responsibility for any inaccuracy contained herein.