

PROPERTY DETAILS

- Available:** ±1,800 - ±6,600
- Lot Size:** ±40,847 SF of Land
- Rate:** \$1.65 gross
- Term:** 3-5 years
- Zoning:** C-P (PCD)
- APN:** 8447-031-038

Park-like setting: The building is situated in a serene environment with beautiful views of the park.

Ample parking: Large lot with ±28 Parking Spaces

Shared amenities: Tenant have access to a common conference room, kitchen, and private patio.

Next to 10 Freeway with close access to 57, 71, 210 & 60 Freeways

TAKE A TOUR

LOCAL EXPERTISE. INTERNATIONAL REACH. WORLD CLASS.

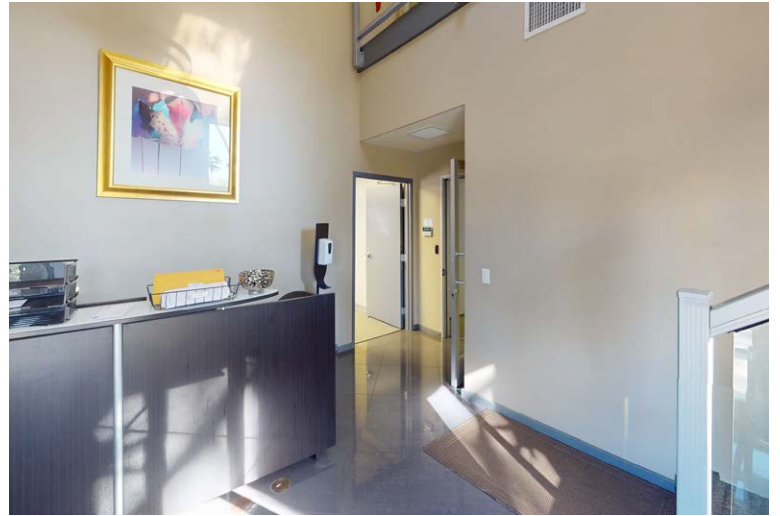
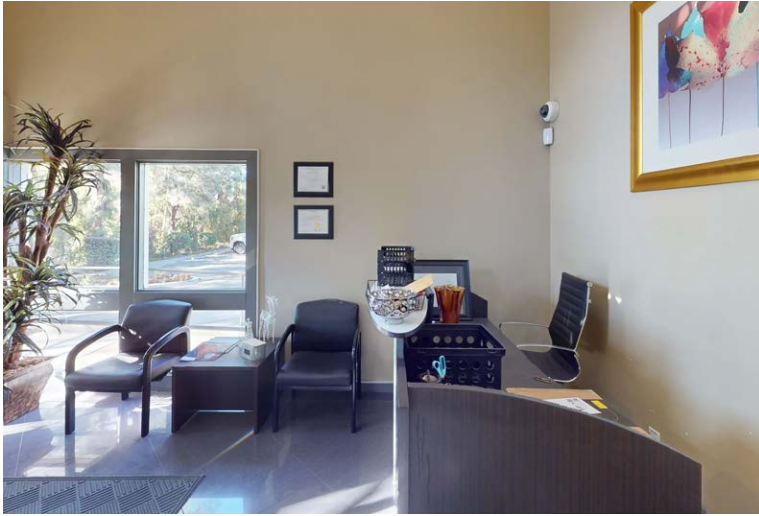


Ron Mgrublian
Principal | DRE# 01902882
P: +1(562)354-2537
E: rmgrublian@leelalb.com

CONNECT WITH US ON OUR SOCIALS!

- www.lee-associates.com
- @leeassociateslalb
- @leeassociateslalb
- @LeeAssociatesLA

Copyright © Lee & Associates. All rights reserved. No part of this work may be reproduced or distributed without written permission of the copyright owner. The information contained in this report was gathered by Lee & Associates from sources believed to be reliable. Lee & Associates, however, makes no representation concerning the accuracy or completeness of such information and expressly disclaims any responsibility for any inaccuracy contained herein.



LOCAL EXPERTISE. INTERNATIONAL REACH. WORLD CLASS.



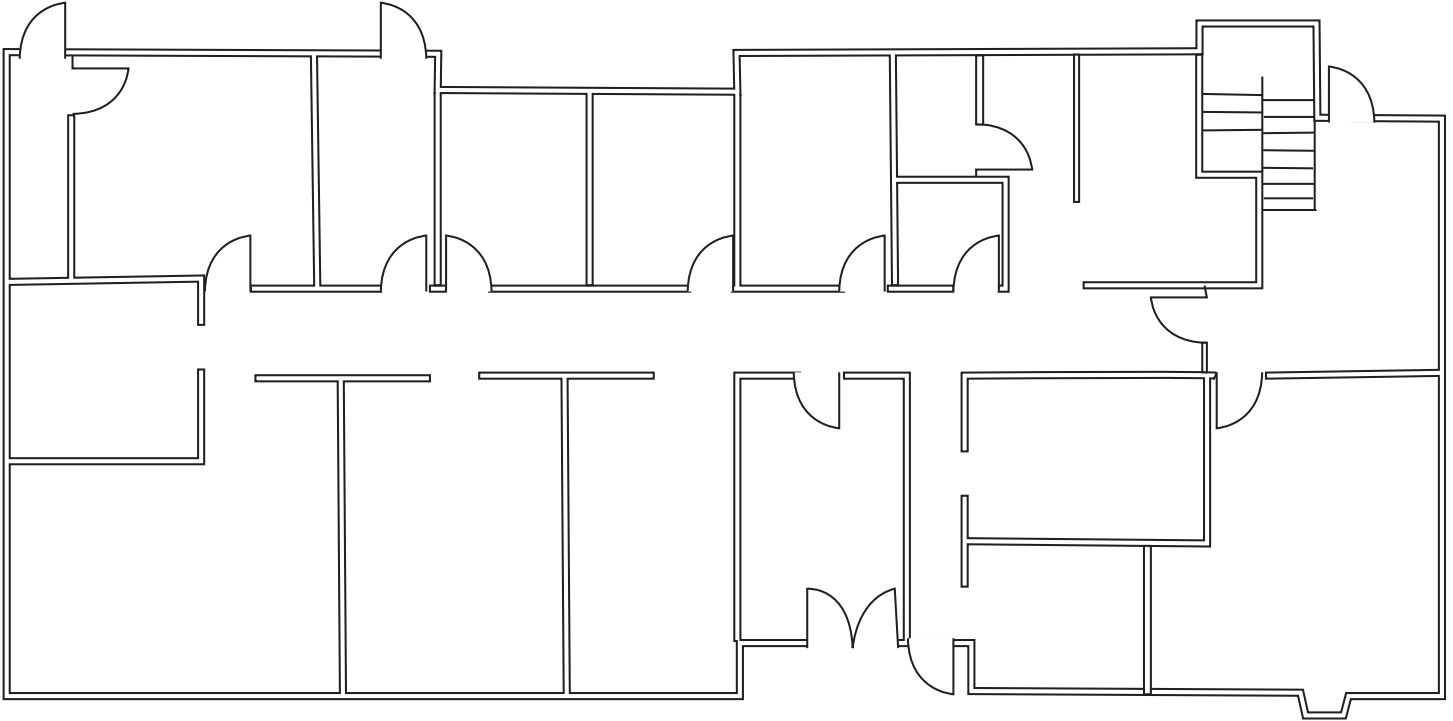
Ron Mgrublian
Principal | DRE# 01902882
P: +1(562)354-2537
E: rmgrublian@leelalb.com

CONNECT WITH US ON OUR SOCIALS!

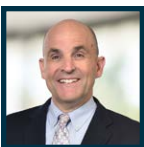
 www.lee-associates.com  @leeassociateslalb
 @leeassociateslalb  @LeeAssociatesLA

Copyright © Lee & Associates. All rights reserved. No part of this work may be reproduced or distributed without written permission of the copyright owner. The information contained in this report was gathered by Lee & Associates from sources believed to be reliable. Lee & Associates, however, makes no representation concerning the accuracy or completeness of such information and expressly disclaims any responsibility for any inaccuracy contained herein.

FLOOR PLANS: (NOT TO SCALE)



LOCAL EXPERTISE. INTERNATIONAL REACH. WORLD CLASS.



Ron Mgrublian

Principal | DRE# 01902882

P: +1(562)354-2537

E: rmgrublian@leelalb.com

CONNECT WITH US ON OUR SOCIALS!



www.lee-associates.com



[@leeassociateslalb](https://www.facebook.com/leeassociateslalb)



[@leeassociateslalb](https://www.instagram.com/leeassociateslalb)



[@LeeAssociatesLA](https://twitter.com/LeeAssociatesLA)

Copyright © Lee & Associates. All rights reserved. No part of this work may be reproduced or distributed without written permission of the copyright owner. The information contained in this report was gathered by Lee & Associates from sources believed to be reliable. Lee & Associates, however, makes no representation concerning the accuracy or completeness of such information and expressly disclaims any responsibility for any inaccuracy contained herein.