

10680 SILICON AVE.

MONTCLAIR, CA | INDUSTRIAL CONDO

FOR SALE



FOR MORE INFORMATION, PLEASE CONTACT:



Ron Mgrublian, MBA
Principal
BR# 01902882
PH: 562.354.2537
E: mgrublian@leelalb.com



10680 SILICON AVE

MONTCLAIR, CA

Industrial Condo:

Unit 13-S - Size \pm 2,335 SF

Unit 15-U - Size \pm 2,268 SF

Price: \$400 PSF

Zoning: M1

PROPERTY FEATURES

- Brand New Construction
- High Clear 28'
- Highly Desirable Business Park Setting
- Great Inland Empire West Location
- Close to 10, 71 & 60 Freeways

[VIEW 3D TOUR](#)



FOR MORE INFORMATION, PLEASE CONTACT:

Ron Mgrublian, MBA

Principal

BRE# 01902882

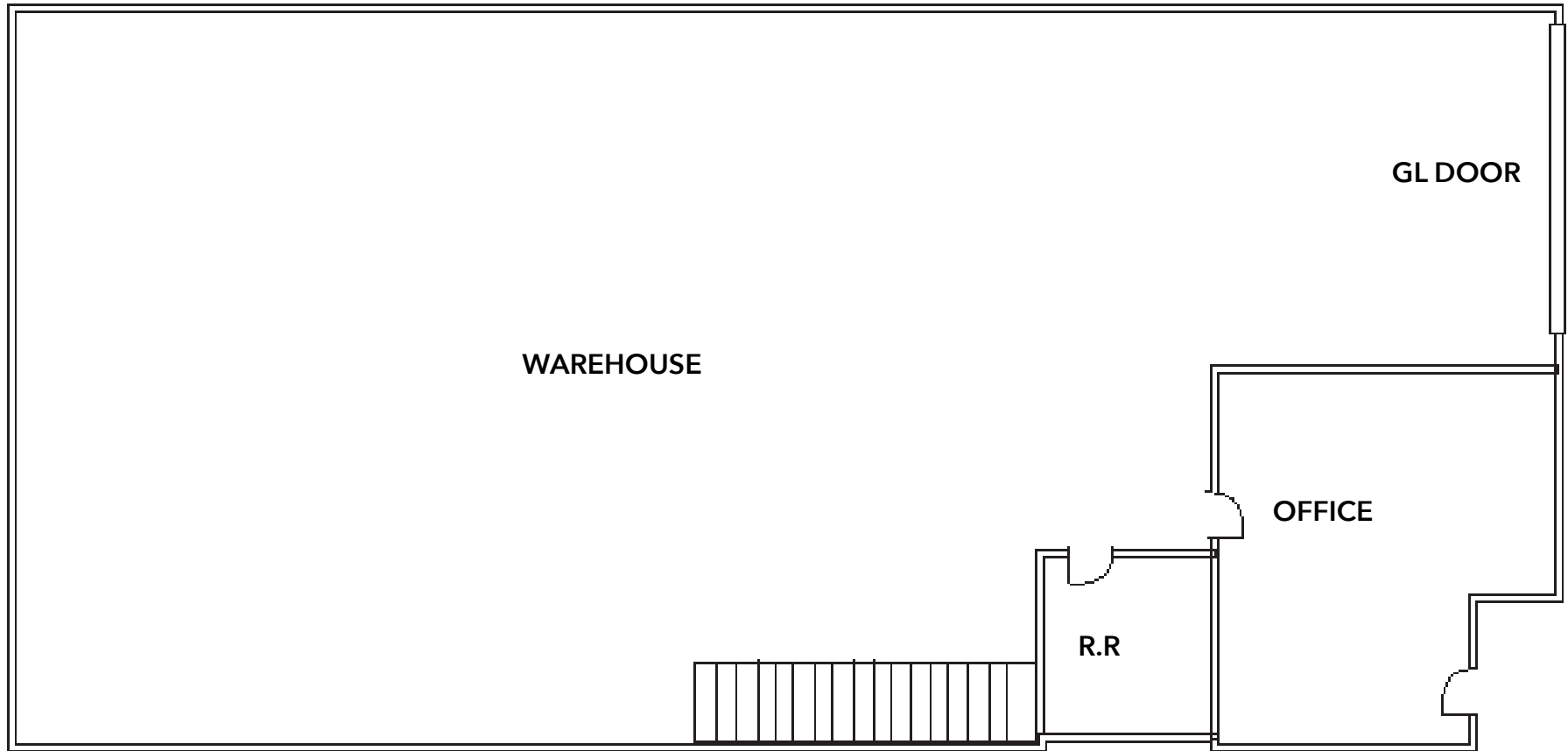
PH: 562.354.2537

E: mgrublian@leelalb.com



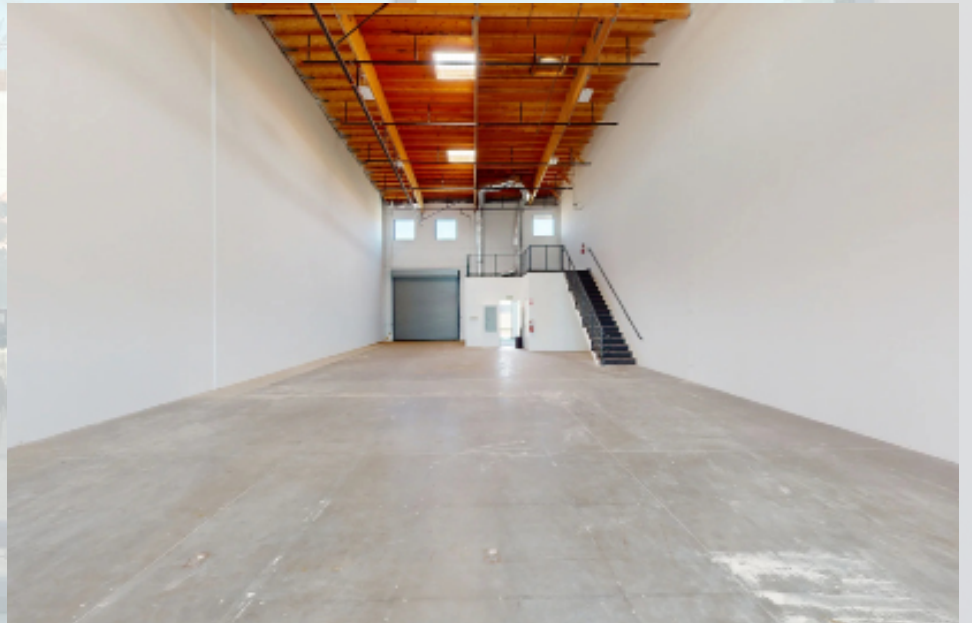
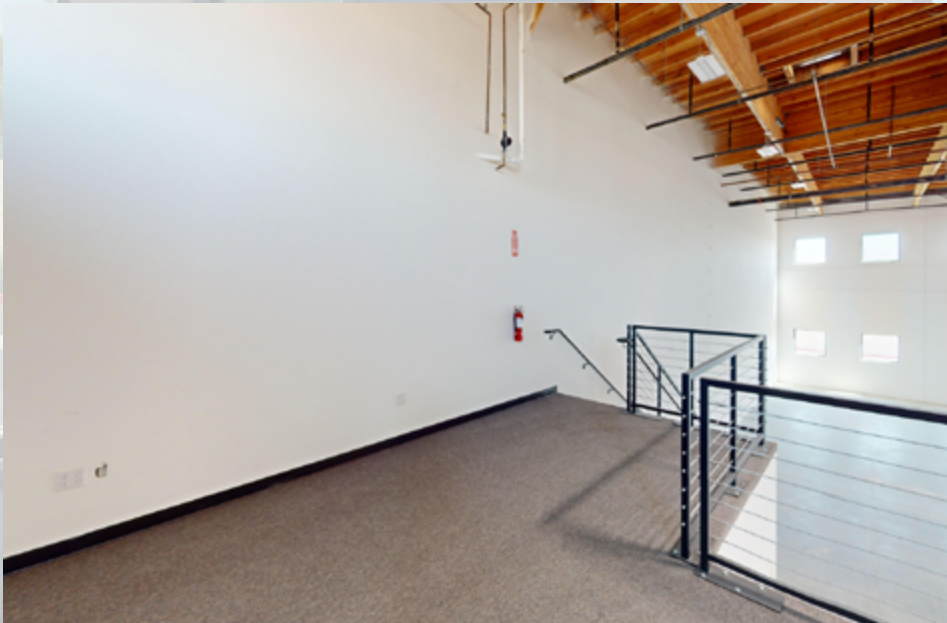
10680 SILCON AVE

MONTCLAIR, CA



(NOT DRAWN TO SCALE)

INTERIOR PHOTOS





Copyright © Lee & Associates. All rights reserved. No part of this work may be reproduced or distributed without written permission of the copyright owner. The information contained in this report was gathered by Lee & Associates from sources believed to be reliable. Lee & Associates, however, makes no representation concerning the accuracy or completeness of such information and expressly disclaims any responsibility for any inaccuracy contained herein 04.23.25

FOR MORE INFORMATION, PLEASE CONTACT:



Ron Mgrublian, MBA
Principal
BRE# 01902882
PH: 562.354.2537
E: rmgrublian@leelalb.com