



PROPERTY DETAILS

Available: ±5,000 SF to ±20,847 SF

Lot Size: ±40,847 SF of Land

Term: 3-5 years

Zoning: I-C

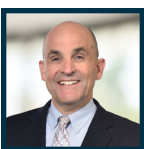
APN#: 8550-005-061

Available SF	Lease \$ PSF	Sale \$ PSF
5,000	\$1.70	\$400.00
10,000	\$1.65	\$390.00
15,000	\$1.63	\$385.00
20,847	\$1.60	\$378.00

- High Image/Freeway Visibility
- Two (2) Dock High
- Three (3) Ground Level Doors
- 42 Parking Spaces
- Large Fenced / Paved Yard
- 1240 Amps
- 24' Minimum Clearance Height

TAKE A TOUR

LOCAL EXPERTISE. INTERNATIONAL REACH. WORLD CLASS.



Ron Mgrublian

Principal | DRE# 01902882

P: +1(562)354-2537

E: rmgrublian@leelalb.com

CONNECT WITH US ON OUR SOCIALS!



www.lee-associates.com



@leeassociateslalb

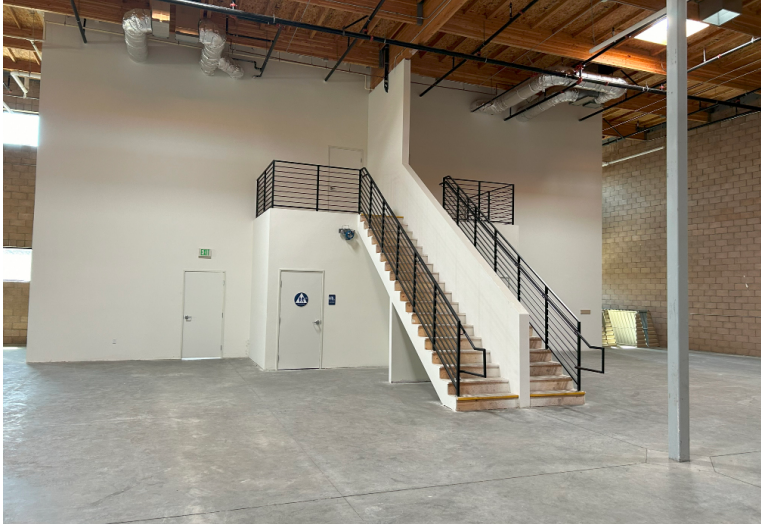


@leeassociateslalb

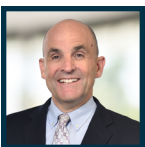


@LeeAssociatesLA

Copyright © Lee & Associates. All rights reserved. No part of this work may be reproduced or distributed without written permission of the copyright owner. The information contained in this report was gathered by Lee & Associates from sources believed to be reliable. Lee & Associates, however, makes no representation concerning the accuracy or completeness of such information and expressly disclaims any responsibility for any inaccuracy contained herein.



LOCAL EXPERTISE. INTERNATIONAL REACH. WORLD CLASS.



Ron Mgrublian
Principal | DRE# 01902882
P: +1(562)354-2537
E: rmgrublian@leelalb.com

CONNECT WITH US ON OUR SOCIALS!



www.lee-associates.com



@leeassociateslalb



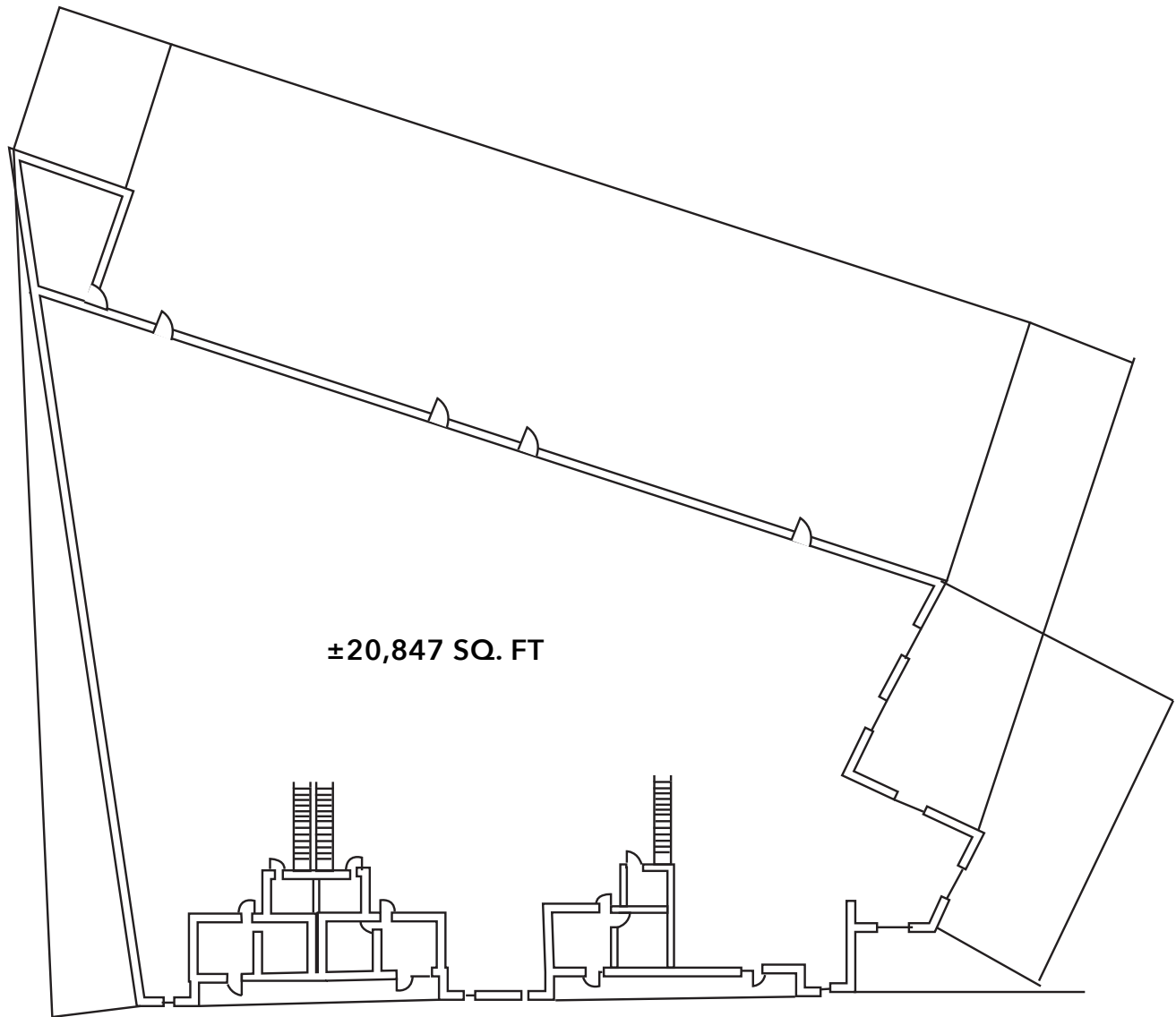
@leeassociateslalb



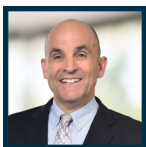
@LeeAssociatesLA

Copyright © Lee & Associates. All rights reserved. No part of this work may be reproduced or distributed without written permission of the copyright owner. The information contained in this report was gathered by Lee & Associates from sources believed to be reliable. Lee & Associates, however, makes no representation concerning the accuracy or completeness of such information and expressly disclaims any responsibility for any inaccuracy contained herein.

FLOOR PLANS: (NOT TO SCALE)



LOCAL EXPERTISE. INTERNATIONAL REACH. WORLD CLASS.



Ron Mgrublian

Principal | DRE# 01902882

P: +1(562)354-2537

E: rmgrublian@leelalb.com

CONNECT WITH US ON OUR SOCIALS!



www.lee-associates.com



@leeassociateslalb



@leeassociateslalb



@LeeAssociatesLA

Copyright © Lee & Associates. All rights reserved. No part of this work may be reproduced or distributed without written permission of the copyright owner. The information contained in this report was gathered by Lee & Associates from sources believed to be reliable. Lee & Associates, however, makes no representation concerning the accuracy or completeness of such information and expressly disclaims any responsibility for any inaccuracy contained herein.