

## Frequently asked questions

### Why is PG&E doing this work?

Years of drought, extreme heat, and 129 million dead trees have created a new normal for our state. This new normal has increased the threat of wildfires across our service area, as we saw with 2017's statewide wildfires. So we must do even more in partnership with our customers and communities to reduce wildfire risks and protect public safety.

### Is PG&E required to do this work?

The fire defense zone work is a program that PG&E is undertaking voluntarily in partnership with our customers and communities to create an additional layer of protection and help increase wildfire safety. The CPUC requires PG&E maintain at least a 4-ft clearance between vegetation and power lines in high fire-threat areas year-round to help ensure electric reliability and public safety. We want to be sure we are doing all we can to help reduce wildfire risks, ensure access for first responders, and keep our customers safe.

### Will PG&E be cutting down trees as part of this vegetation work?

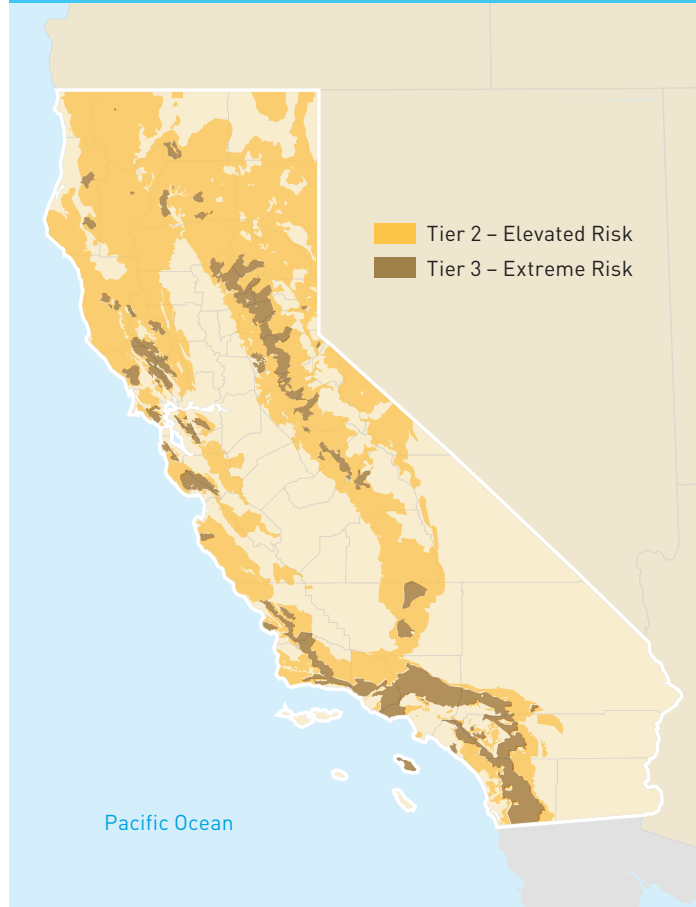
We know how important trees are to our communities. Trees are important to us, too. Unfortunately, trees that fall or grow into power lines can cause outages and be a serious hazard to people. This work will include some tree removals to help reduce wildfire threats and to keep our communities safe. Our arborists will also work with property owners on recommendations for fire-safe planting in and around the fire defense zone.

### What will PG&E do with the vegetative and wood debris resulting from this work?

We will work with property owners to develop a plan specific to their property and needs that safely repurposes, relocates, or removes debris resulting from our fire defense zone work.

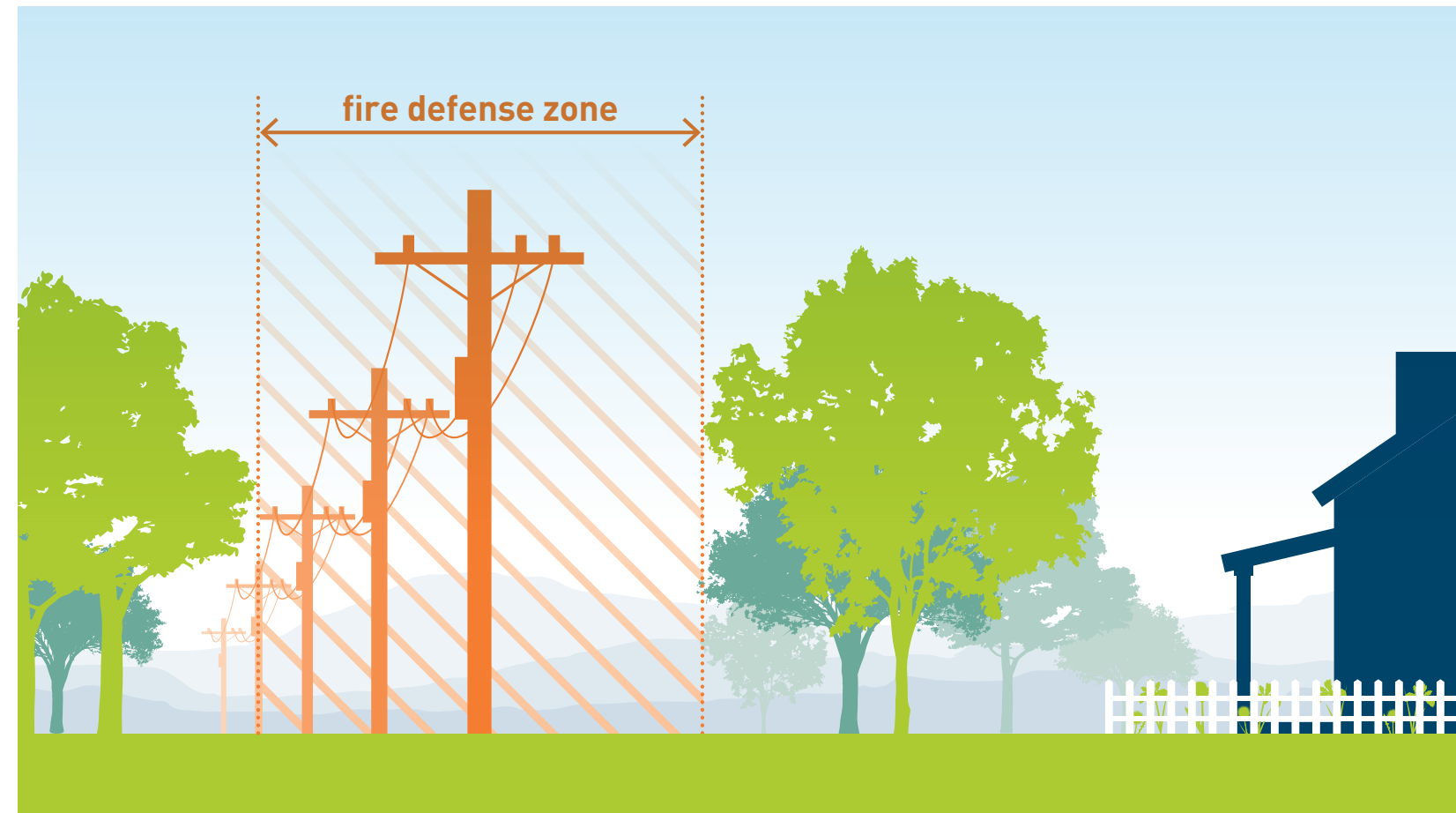
### High Fire-Threat District Map

The California Public Utilities Commission (CPUC) worked in coordination with CAL FIRE and other experts to develop a High Fire-Threat District Map, adopting it in January 2018. The map identifies areas across California that have the highest likelihood of a wildfire impacting people and property, and where additional action may be necessary to reduce wildfire risks. To see a more detailed version of the map, please visit the CPUC's website: [cpuc.ca.gov/FireThreatMaps](http://cpuc.ca.gov/FireThreatMaps).



## COMMUNITY WILDFIRE SAFETY PROGRAM

# Working together to create fire defense zones around power lines



## Nothing is more important to us than keeping our customers and communities safe. We know how much trees mean to our communities, and we are committed to working together to ensure the right trees are located in the right places to help reduce wildfire risks and improve public safety.

Extreme weather events driven by climate change are causing unprecedented and unanticipated wildfires. In light of last year's wildfires, we are taking action with a comprehensive Community Wildfire Safety Program across our service area. We are bolstering wildfire prevention and emergency response efforts, putting in place new and enhanced safety measures, and doing more over the long term to harden our electric system to help reduce wildfire risks and to keep our customers safe.

### Ensuring safe space between trees and power lines

Our efforts include enhanced vegetation management practices to meet new state fire safety standards and, in the highest wildfire risk areas, doing additional work to create fire defense zones around power lines to provide an added layer of protection.

This includes working together with our customers and communities to manage trees, brush, and other vegetation that is located near or under power lines and could pose a safety concern.

### Creating fire defense zones

In the highest fire-threat areas across Northern and Central California, we will be working with our customers to create fire defense zones by removing vegetation under and around power lines that could act as fuel in case of

a wildfire. Vegetation, such as trees and brush, provided much of the fuel for the devastating wildfires that have occurred in California the past several years. That's why we're focused on reducing the amount of fuel located near our power lines. These fire defense zones:

- Create safe space between power lines and trees and brush that can act as fuel for wildfires
- Can help slow the spread of fires and improve access for first responders in the event of a wildfire
- Enhance defensible space around homes, businesses, and properties, improving public safety

### Working together with our customers

We look forward to working with our customers in high fire-threat areas to share information, answer questions, and agree on plans for any fire defense zone work. PG&E contract arborists will first conduct inspections, looking at the area 15 feet on either side of the pole line for any vegetation, such as trees, bushes, shrubs and limbs that could act as fuel in a wildfire. We will then meet with property owners to share the results and partner to develop a customized plan that helps ensure safety. PG&E will perform the agreed-upon work at no cost to the property owner.

Our arborists will also work with property owners on recommendations for fire-safe planting in and around the fire defense zone.

Every year, PG&E inspects every segment of almost 100,000 miles of overhead electric power line, with some locations patrolled multiple times a year. We prune or remove approximately 1.4 million trees annually to help keep the lights on and our customers safe. And, we've nearly doubled our investment in vegetation management work to reduce power outages and wildfire risks.

### Helping reduce wildfire risks

Fire defense zones can help reduce wildfire risks, improve access for first responders, and protect public safety. We are looking at the area 15 feet on either side of the pole line for any vegetation that could act as fuel in a wildfire.

