

GECKO® REVELATION SR 618WA

OWNER'S MANUAL



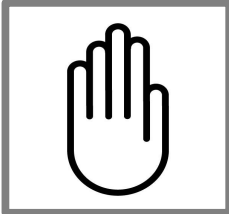
www.geckomusicgroup.com



SAFETY INSTRUCTIONS & SYMBOLS GUIDE

For your own safety and to avoid invalidation of the warranty, all text marked with these symbols should be read carefully.

SYMBOLS:



NOTES

Contain important information and useful tips on the operation of your equipment.



WARNING

The lightning flash with arrowhead symbol within an equilateral triangle, is intended to alert the user to the presence of uninsulated dangerous voltage within the product's enclosure that may be of sufficient magnitude to constitute a risk of electric shock.



CAUTIONS

The exclamation point **within an** equilateral triangle is intended to alert the user to the presence of important **operating** and maintenance (servicing) instructions in the literature accompanying the **appliance**. Please read the manual carefully.



HEADPHONES SAFETY WARNING

Contain important information and useful tips **for** headphones outputs and monitoring levels.



SAFETY INSTRUCTIONS:

- To reduce the risk of electrical shock, do not remove covers. No user-serviceable parts inside. Please refer servicing to qualified personnel.
- To reduce the risk of electrical shock or fire, do not expose the equipment to rain or moisture.
- Do not impose unnecessary stress on your equipment (i.e. placing heavy objects on it, over screwing its mounting, etc).
- Read and keep the instruction manuals in a safe place for future references.
- Do not attempt to clean the equipment with chemical solvents as this may damage the finish. Clean only with a dry cloth.
- Do not block any ventilation openings.
- Do not install near any heat sources such as radiators, heat registers, stoves, or other apparatus that produce heat.
- Do not defeat the purpose of the polarized or grounding-type plug. A polarized plug has two blades with one wider than the other. A grounding type plug has two blades and a third grounding prong. The wide blade or the grounding prong is provided for your safety. If the provided plug does not fit into your outlet, consult an electrician for the replacement of the obsolete outlet.
- Protect the power cord from being walked on or pinched particularly at plugs, convenience receptacles, and the point where they exit from the apparatus.
- Unplug the apparatus during lightning storms or when it is not in use for a long period of time.

- Use only attachments/accessories specified by the manufacturer.
- Always shut down power supply when not in use to save energy and for a prolonged lifespan.
- Exposure to extremely high noise levels may cause permanent hearing loss. Individuals vary considerably in susceptibility to noise-induced hearing loss, but nearly everyone will lose some hearing if exposed to sufficiently intense noise for a period of time. The U.S. Government's Occupational Safety and Health Administration (OSHA) and the Singapore Workplace Safety and Health Council (WSHC) has specified the permissible noise level exposures shown in the following chart. According to OSHA and WSHC, any exposure in excess of these permissible limits could result in some hearing loss. To ensure against potentially dangerous exposure to high sound pressure levels, it is recommended that all persons exposed to equipment capable of producing high sound pressure levels use hearing protectors while the equipment is in operation. Earplugs or protectors in the ear canals or over the ears must be worn when operating the equipment in order to prevent permanent hearing loss if exposure is in excess of the limits set forth here:

Duration/Day (Hours)	dB, Sound Pressure Level (SPL)	Descriptions
	Below 90dB	Safe zone
8.00	90	Hearing damage
6.00	92	
4.00	95	
3.00	97	
2.00	100	Serious hearing damage
1.50	102	
1.00	105	
0.50	110	
0.25 or less	115	Human pain threshold

GECKO MUSIC GROUP

Singapore | Malaysia | Taiwan | Philippines | Canada

Email: info@geckomusicgroup.com • Website: www.geckomusicgroup.com

FOREWORD

Dear Friends,

Thank you very much for purchasing quality products by **GECKO MUSIC GROUP**. I am very grateful that we have journeyed this far, since 2002! We have set new audio standards in the industry and we have touched and changed lives along the way! I believe our journey will not stop but continue to pursue more breakthrough findings and improvements that will change our lives for the better.

At **GECKO MUSIC GROUP** we focus on developing nothing but the best professional audio equipment and premium grade audiophile products you ever need! Our engineering team is constantly doing R&D to meet this goal. I thank God that by His grace, we have succeeded in developing the revolutionary C.R.I.S.T.A.L.® technology that has changed and is changing the way how audio is captured, encoded, reproduced and managed!

On behalf of **GECKO MUSIC GROUP**, I would like to pledge our continuing commitment to uphold our traditions in serving the music and audio communities around the world with more value-added premium quality GECKO® professional audio equipment and premium grade audiophile products!

Once again, thank you very much for your support. We trust you will love what you hear!

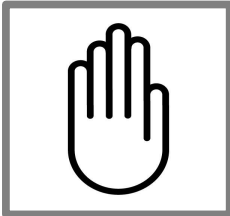
Yours truly,

A handwritten signature in black ink, appearing to read 'Daniel Foo', with a small dot at the end of the line.

Daniel Foo
Founder/Director (R&D)
GECKO MUSIC GROUP

TABLE OF CONTENTS

INTRODUCTION	1
SUBWOOFER ELEMENTS	2
MAKING CONNECTIONS	4
SPECIFICATION	5
WARRANTY	6



NOTES: Congratulations on your purchase of the GECKO® REVELATION SR 618WA! We recommend that you take a moment and read through the manual as it provides information that will assist you in using your unit to its fullest potential.

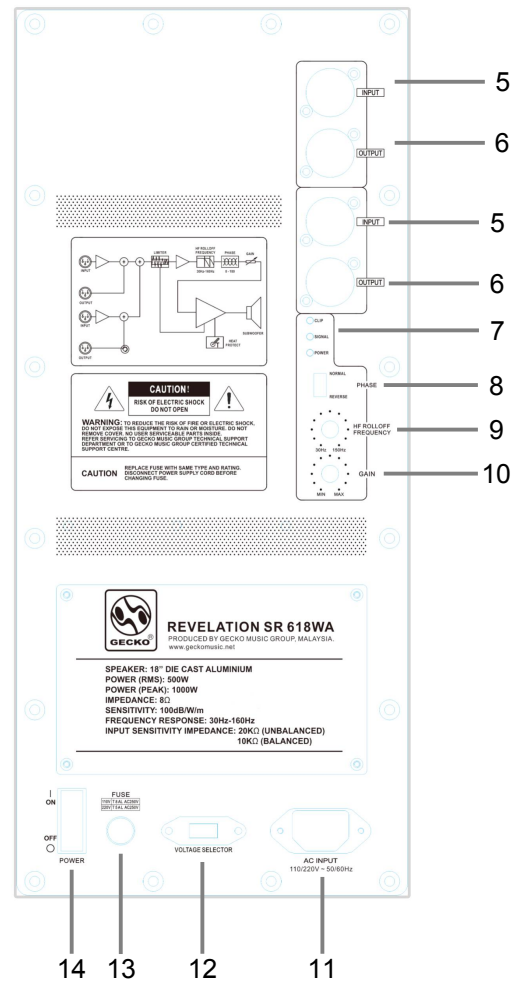
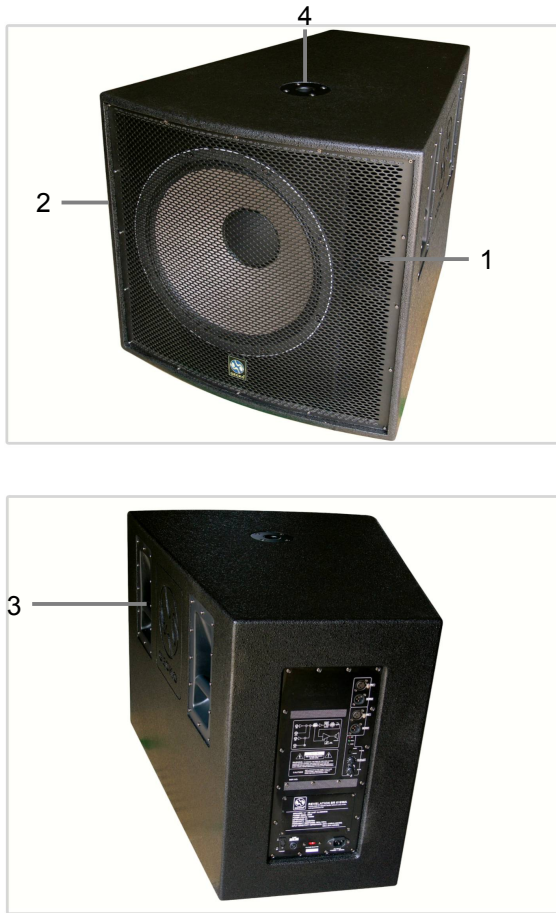
INTRODUCTION

Engineered to complement the REVELATION series loudspeakers, the innovative GECKO® REVELATION SR 618WA 18" active C.R.I.S.T.A.L.® Audiophile long-throw subwoofer incorporates a very powerful yet versatile built-in C.R.I.S.T.A.L.® Audiophile Class-H amplifier, enabling consistent low-frequency sound output as well as simplicity of use. Its wide low-frequency spectrum extension ensures perfect natural reproduction of any bass playback.

Incorporating state-of-the-art dynamic speaker cone with superb wide horizontal area coverage of 360°, it is guaranteed to cover all floor spaces of concern, and this advantage translates to cost savings as fewer subwoofer units will be required for any given venue.

The GECKO® REVELATION SR 618WA 18" active C.R.I.S.T.A.L.® Audiophile long-throw subwoofer is housed in a weather-resistant birch ply cabinet. It is built to withstand the rigorous demands of any concert touring and to take on the hard knocks of demanding stage usage.

SUBWOOFER ELEMENTS



1. GRILLE

Powder-coated perforated steel grille to protect the REVELATION SR 618WA's woofer from possible damages contributed by external factors.

2. ENCLOSURE

All REVELATION series enclosures are made using Baltic birch plywood, oven-baked painted with textured wear-resistant black paint to ensure the best resonance and durability.

3. RECESSED HANDLE

To ease the carrying of the REVELATION SR 618WA.

4. POLE MOUNT SOCKET

Located at the top of the enclosure, the pole mount socket is commonly used to hold the REVELATION series loudspeaker using a speaker pole.

5. INPUTS

Two balanced, female XLR type INPUT connectors are provided.

6. OUTPUTS

Two balanced, male XLR type OUTPUT connectors are provided to loop-thru signal from one REVELATION SR 618WA to another REVELATION SR 618WA, active loudspeaker or power amplifier.

7. LED INDICATORS

CLIP (RED LED)

Shows OUTPUT capability is being exceeded, with clipping distortion.

SIGNAL (GREEN LED)

Shows signal is present on the REVELATION SR 618WA.

POWER (AMBER LED)

Illuminates when the main power supply is active on the REVELATION SR 618WA.

8. PHASE SWITCH

Compensates for having REVELATION SR 618WA and main loudspeakers in different locations. Ideally, REVELATION SR 618WA sound should reach the listening position at the same time as sound from the main loudspeakers. However, if the distance from the listening position to the REVELATION SR 618WA, and from the listening position to the main loudspeakers differ, the sound from each will reach your ears at different times. The PHASE SWITCH, when switched to "REVERSE", delays the signal by 180 degrees, so the REVELATION SR 618WA output will blend into that of the main loudspeakers. At the listening position, listen to the mid-bass output. If it sounds weak, set PHASE SWITCH back to "NORMAL".

9. HF ROLLOFF FREQUENCY CONTROL

This crossover control allows you to adjust the upper limit of the REVELATION SR 618WA's response from 30Hz to 160Hz. The REVELATION SR 618WA's response will begin rolling off above the set frequency. Set the crossover frequency to the lowest frequency response rating of the main loudspeakers.

10. GAIN CONTROL

This knob is used to regulate the output level of the REVELATION SR 618WA. Use this to set the balance between the main loudspeakers and the REVELATION SR 618WA.

11. AC POWER CORD RECEPTACLE

The REVELATION SR 618WA comes with a detachable power cord. This cord must be attached to the IEC receptacle on the REVELATION SR 618WA before the cord is plugged into the AC wall socket.

12. VOLTAGE SELECTOR

This switch is pre-set at the factory for the proper local voltage, so there is no need to change the switch setting. For 110V operation, set the VOLTAGE SELECTOR to 110V.



WARNING: Always ensure you have the appropriate voltage rating selected on your REVELATION SR 618WA before plugging into an AC outlet. Connection to an inappropriate power source may result in fire or electric shock, and extensive damage which is not covered by the warranty.

13. REPLACEABLE FUSE

Protects system from overload, replace with fuse rating as indicated on the REVELATION SR 618WA's amplifier panel's fuse location.

14. POWER SWITCH

Push in on the top [I] of the rocker switch to apply AC mains power to the REVELATION SR 618WA. Push in on the bottom [O] of the rocker switch to turn the REVELATION SR 618WA OFF.

MAKING CONNECTIONS

To connect the REVELATION SR 618WA to your sound system, refer to the following steps:

1. Turn OFF all equipment before making any connections.
2. Place the REVELATION SR 618WA approximately 4-5 feet, either to the left or to the right of your main loudspeakers (with the exceptions if you are using REVELATION series loudspeakers as main loudspeakers, whereby you can pole-mount them above the REVELATION SR 618WA enclosures).
3. For purest sound quality, make connections using only premium quality audio cables (i.e. GECKO® TRUTH T2, GECKO® TRUTH T3AL), connectors (i.e. GECKO® OLYMPIAN and GECKO® AUDIOPHILE connectors), amplifiers (i.e. GECKO® GENESIS ELEGANCE and DEFINITY AUDIO® amplifiers), and mixing consoles (i.e. GECKO® EXODUS series mixing consoles) according to your requirements.
4. Turn ON all equipment after making connections. Alternatively, you could set up the power-up and down sequence of your system using the GECKO® GALILEE CLASSIC PSC 8330 power sequencer for optimum protection.

SPECIFICATION

Speaker:

18" Waterproof Cloth/Aluminium Woofer with Diecast Aluminium Frame

Max SPL:

125dB/m

Max RMS:

1000W

Impedance:

8Ω

Frequency Response:

30Hz ~ 160Hz (C.R.I.S.T.A.L.® Audiophile Linear Response)

Nominal Coverage:

C.R.I.S.T.A.L.® WaveGuide 360° Coverage

Sensitivity:

120dB/W/m

Input Sensitivity Impedance:

Unbalanced, 20kΩ

Balanced, 10kΩ

Amplifier Rated Output:

8Ω: 775W per Channel, 3-Tier C.R.I.S.T.A.L.® Audiophile Class-H

Amplifier Protections:

Mid-Point DC Drift, Short Circuit (ISC), Open Circuit, Thermal (UQC), Overload, Clip Limiter (ACLC), Soft Start (SSC), Subsonic (DHPF), Ultrasonic and RF

Systems:

HF Rolloff Crossover, Phase Reverse Circuitry, Ultra Quiet Cooling Design

AC Power:

110/220V ~ 50/60Hz Selectable Voltages

Physical Properties:

Enclosure: 20mm Baltic Birch Plywood

Finish: Wear-Resistant Textured Black Paint

Hardware: 4 x Recessed Handle (Sides), 1 x Pole Mount Cup (Top)

Grille: Powder Coated Perforated Steel (Black)

Audio Connectors: Balanced XLR Male Out (2), XLR Female In (2)

Net Weight: 45kg

Dimension: (H) 650mm x (W) 895mm x (D) 700mm

Specifications subject to change without prior notice. Manufactured under ISO9000 certified management system.

WARRANTY

GECKO MUSIC GROUP warrants its GECKO® products for a period of one (1) year from the original date of purchase, in accordance to the warranty regulations described below.

What is Covered:

During the applicable warranty period, GECKO MUSIC GROUP warrants the product against defects in materials and workmanship and against malfunctions. GECKO MUSIC GROUP will remedy all such defects and malfunctions without charge for parts or labour if the warranty applies. In the case that other parts are used which constitutes an improvement, GECKO MUSIC GROUP may, at its discretion, charge the customer for the additional cost of these parts. Final determination of warranty coverage lies solely with GECKO MUSIC GROUP.

What is Not Covered:

1. If the product needs to be modified or adapted in order to comply with applicable technical or safety standards on a national or local level, in any country which is not the country where the product was originally developed and manufactured, this modification/adaptation shall not be considered a defect in material or workmanship;
2. Normal wear and tear, in particular, of faders, crossfaders, potentiometers, keys/buttons, valves, guitar/bass strings, machine heads, pick-up covers, PVC/PU/leather covers, illuminants, and similar parts are not covered by this warranty;
3. Improper handling, neglect or failure to operate the unit in compliance with the instructions given in the user or service manuals;
4. Connection or operation of the unit in any way that does not comply with the technical or safety regulations applicable in the country where the product is used;
5. Damages/defects caused by force of nature or any other condition that is beyond the control of GECKO MUSIC GROUP;
6. Any repair or opening of the unit carried out by unauthorized personnel (user included) will void the warranty;
7. Modification or removal of serial numbers.

Obtaining Warranty Service:

To return a GECKO® product for warranty service, first fill out the [Online Technical Report](#) on this website and submit for an authorization/service number. Write the authorization/service number so that it is prominently displayed on the outside of the shipping carton. Any products received without an authorization/service number that is clearly visible upon arrival at the factory will be refused. Enclose proof of the original delivery date or a copy of the original sales receipt/invoice. Enclose a description of the suspected defect or malfunction and the condition, if any, which caused the problem. Return the product to either GECKO MUSIC GROUP or the GECKO® Store where the purchase was made. Note: Before sending back to GECKO MUSIC GROUP, you can first check with your local GECKO® Store or authorized reseller where you buy from for support.

Warranty Shipping:

You are responsible for prepaying shipping costs F.O.B. GECKO MUSIC GROUP, Singapore. Shipped product(s) must be properly packaged. Use original shipping cartons and packing materials where possible. GECKO MUSIC GROUP is not responsible for damages resulting from inadequate and or improper packing.

Products received with damages due to improper packaging will be deemed out of warranty.

Products which do not meet the terms of this warranty will be repaired exclusively at the buyer's expense. GECKO MUSIC GROUP will inform the buyer of such circumstance. If the buyer fails to submit a written repair order within six (6) weeks after notification, GECKO MUSIC GROUP will return the unit C.O.D. with a separate invoice for freight and packing. Such costs will also be invoiced separately when the buyer has sent in a written repair order.

Warranty Rights:

This warranty is exclusive and extended to the original buyer and is not transferable to anyone who may subsequently purchase this product. No other person (apart from authorized GECKO® Stores) shall be entitled to give any warranty promise on behalf of GECKO MUSIC GROUP.