

## City centre retail premises - Fargate



South Yorkshire  
11 Broad Street West Sheffield, South Yorkshire S1 2BQ  
Phone: +44 (0)114 220 3444  
Email: enquiries@scriinvest.com

### CARMEL HOUSE



Retail

**Address:** Unit 3 Carmel House, Fargate, Sheffield  
**Town:** Sheffield  
**Ward:** Sheffield  
**Postcode:** S1 2HD  
**Min Size:** 2,528 sqft  
**Max Size:** 2,528 sqft

**Company:** South Yorkshire MCA  
**Phone:** +44 (0) 114 220 3444  
**Email:** invest@southyorkshire-ca.gov.uk

### 16 Fargate, Sheffield S1 2HE



Retail

**Address:** 16 Fargate, Sheffield S1 2HE  
**Town:** Sheffield  
**Ward:** Sheffield  
**Postcode:** S1 2HE  
**Min Size:** 1,658 sqft  
**Max Size:** 1,658 sqft

**Company:** South Yorkshire MCA  
**Phone:** +44 (0) 114 220 3444  
**Email:** invest@southyorkshire-ca.gov.uk

### 18 Fargate | Sheffield | S1 2HE



Retail

**Address:** 18 Fargate | Sheffield | S1 2HE  
**Town:** Sheffield  
**Ward:** Sheffield  
**Postcode:** S1 2HE  
**Min Size:** 1,627 sqft  
**Max Size:** 1,627 sqft

**Company:** South Yorkshire MCA  
**Phone:** +44 (0) 114 220 3444  
**Email:** invest@southyorkshire-ca.gov.uk

### 45-47 Fargate, Sheffield, South Yorkshire, S1 2HD



Retail

**Address:** 45-47 Fargate, Sheffield, South Yorkshire, S1 2HD  
**Town:** Sheffield  
**Ward:** Sheffield  
**Postcode:** S1 2HD  
**Min Size:** 6,797 sqft  
**Max Size:** 6,797 sqft

**Company:** South Yorkshire MCA  
**Phone:** +44 (0) 114 220 3444  
**Email:** invest@southyorkshire-ca.gov.uk

### 14 Fargate, Sheffield, S1 2HE



Retail

**Address:** 14 Fargate, Sheffield, S1 2HE  
**Town:** Sheffield  
**Ward:** Sheffield  
**Postcode:** S1 2HE  
**Min Size:** 2,390 sqft  
**Max Size:** 2,390 sqft

**Company:** South Yorkshire MCA  
**Phone:** +44 (0) 114 220 3444  
**Email:** invest@southyorkshire-ca.gov.uk

### 14 Fargate, Sheffield S1 2HE



**Address:** 14 Fargate, Sheffield S1 2HE

**Town:** Sheffield

**Ward:** Sheffield

**Postcode:** S1 2HE

**Min Size:** 1,979 sqft

**Max Size:** 1,979 sqft

**Company:** South Yorkshire MCA

**Phone:** +44 (0) 114 220 3444

**Email:** invest@southyorkshire-ca.gov.uk

### 10-12 Fargate | Sheffield | S1 2HE



**Address:** 10-12 Fargate | Sheffield | S1 2HE

**Town:** Sheffield

**Ward:** Sheffield

**Postcode:** S1 2HE

**Min Size:** 3,483 sqft

**Max Size:** 3,483 sqft

**Company:** South Yorkshire MCA

**Phone:** +44 (0) 114 220 3444

**Email:** invest@southyorkshire-ca.gov.uk

### 32 Fargate, Sheffield, S1 2HE



**Address:** 32 Fargate, Sheffield, S1 2HE

**Town:** Sheffield

**Ward:** Sheffield

**Postcode:** S1 2HE

**Min Size:** 859 sqft

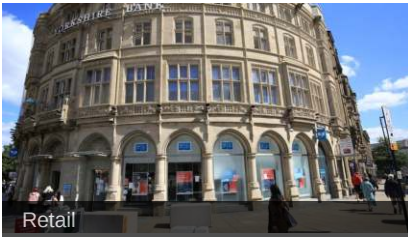
**Max Size:** 859 sqft

**Company:** South Yorkshire MCA

**Phone:** +44 (0) 114 220 3444

**Email:** invest@southyorkshire-ca.gov.uk

### YORKSHIRE BANK CHAMBERS



**Address:** Substantial High Street Property, Yorkshire Bank Chambers, Fargate, Sheffield

**Town:** Sheffield

**Ward:** Sheffield

**Postcode:** S1 2HD

**Min Size:** 2,680 sqft

**Max Size:** 2,680 sqft

**Company:** South Yorkshire MCA

**Phone:** +44 (0) 114 220 3444

**Email:** invest@southyorkshire-ca.gov.uk

### 18 Fargate, Sheffield S1 2HE



**Address:** 18 Fargate, Sheffield S1 2HE

**Town:** Sheffield

**Ward:** Sheffield

**Postcode:** S1 2HE

**Min Size:** 1,566 sqft

**Max Size:** 1,566 sqft

**Company:** South Yorkshire MCA

**Phone:** +44 (0) 114 220 3444

**Email:** invest@southyorkshire-ca.gov.uk

### 9, FARGATE, SHEFFIELD, S1 2HD



**Address:** 9, FARGATE, SHEFFIELD, S1 2HD

**Town:** Sheffield

**Ward:** Sheffield

**Postcode:** S1 2HD

**Min Size:** 1,568 sqft

**Max Size:** 1,568 sqft

**Company:** South Yorkshire MCA

**Phone:** +44 (0) 114 220 3444

**Email:** invest@southyorkshire-ca.gov.uk

### 11 Fargate, Sheffield, S1 2HD



**Address:** 11 Fargate, Sheffield, S1 2HD

**Town:** Sheffield

**Ward:** Sheffield

**Postcode:** S1 2HD

**Min Size:** 5,073 sqft

**Max Size:** 5,073 sqft

**Company:** South Yorkshire MCA

**Phone:** +44 (0) 114 220 3444

**Email:** invest@southyorkshire-ca.gov.uk

### CARMEL HOUSE



**Address:** Unit 3 Carmel House, Fargate, Sheffield, S1 2HD

**Town:** Sheffield

**Ward:** Sheffield

**Postcode:** S1 2HD

**Min Size:** 10,000 sqft

**Max Size:** 10,000 sqft

**Company:** South Yorkshire MCA

**Phone:** +44 (0) 114 220 3444

**Email:** invest@southyorkshire-ca.gov.uk

### CARMEL HOUSE



**Address:** Unit 4 Carmel House, Fargate, Sheffield

**Town:** Sheffield

**Ward:** Sheffield

**Postcode:** S1 2HD

**Min Size:** 704 sqft

**Max Size:** 704 sqft

**Company:** South Yorkshire MCA

**Phone:** +44 (0) 114 220 3444

**Email:** invest@southyorkshire-ca.gov.uk