



Likewise

**Drug & Alcohol Service
for Sheffield Residents
(Adults 18+)**



Background

Like wise

- Sheffield's Drug & Alcohol Service for Adults
- Contract Awarded April 2023
- Service opened 1 August 2023
- Integrated Service with 145 staff
- Police & Probation Teams co-located



Numbers in Treatment

- 3100 registered service users in treatment at any one time.
- 4600 supported annually, the largest number of people supported within the treatment system
- Over 400 referrals received per month.
- Continuity of Care performance substantially stronger than the national average
- Positive work to streamline access arrangements has reduced waiting times, reduced drop-out during assessment and supported improvement in the numbers of people supported.

Likewise Teams



Business Support / Admin Team

Providing clinical & general administration, data & business support

HOPE Team

Health, Outreach Prevention & Engagement (includes HALT & CJ Teams)

Recovery Navigation Team

Providing case management and delivery of PSI to those with a goal of Recovery

Recovery Support Team

Providing a vibrant programme of recovery & aftercare support and progression pathways



SPOC Team

Providing a single point of access for support, advice & information, screening and facilitation to appropriate treatment pathway

Clinical Team

Harm reduction, stabilisation, reduction, detoxification & relapse prevention, dual diagnosis, respiratory and sexual health

Fast Track Team

Providing case management and delivery of PSI to those with a goal of Recovery

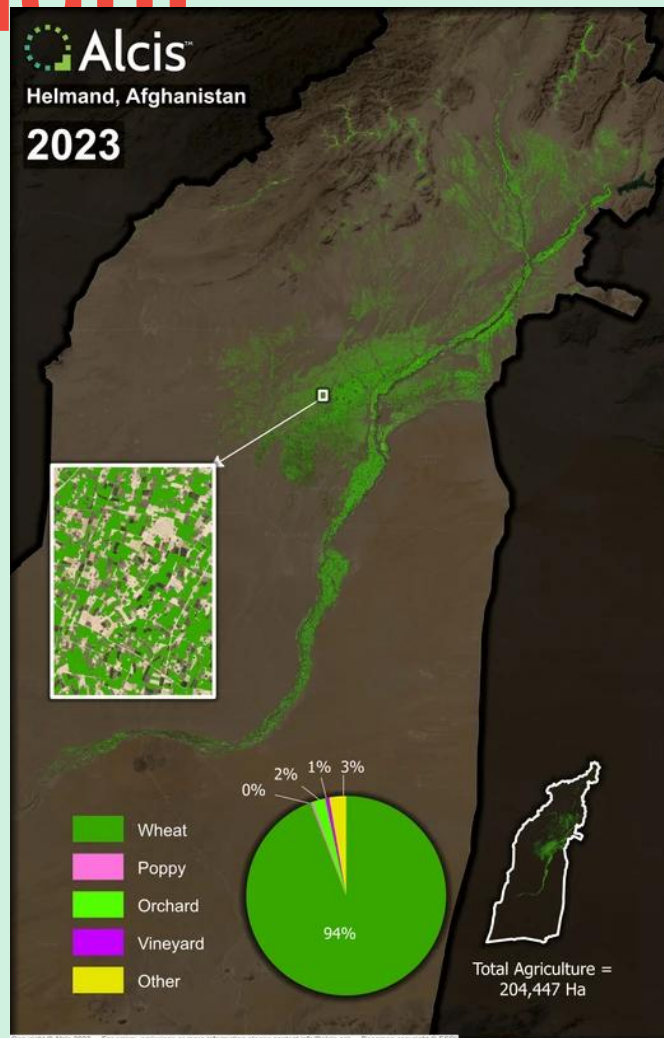
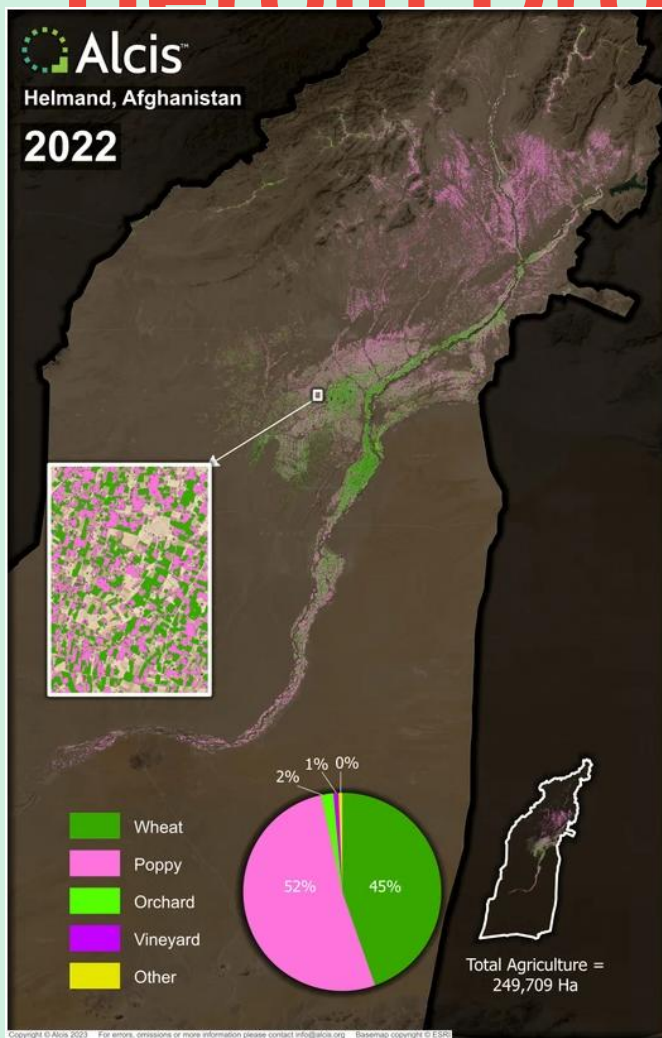
IPS Team

Providing employment support that meets fidelity standards and delivers positive outcomes for service users

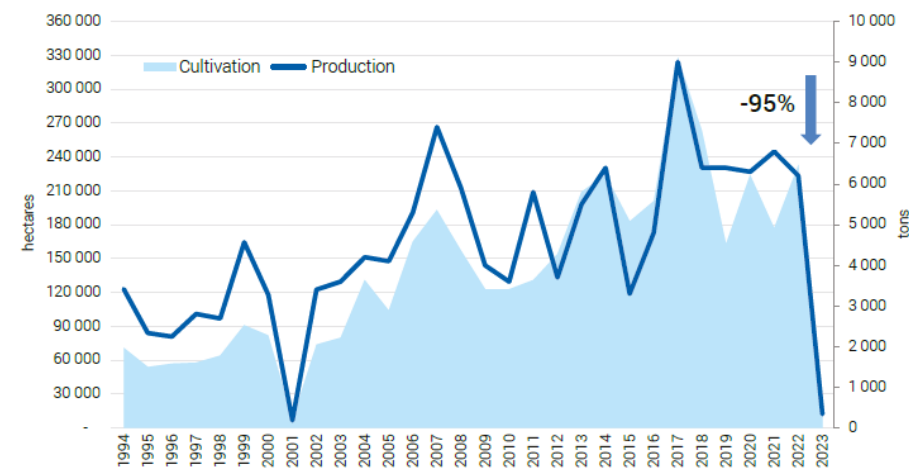
5448



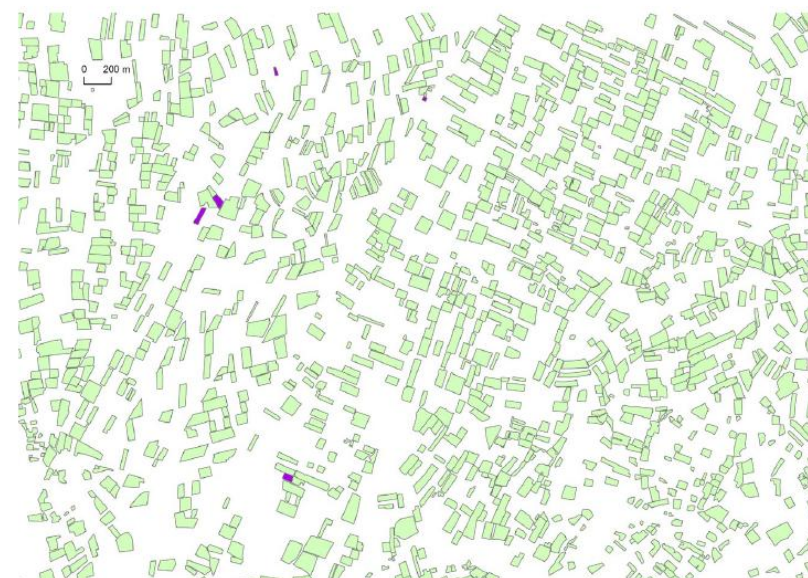
Heroin Drought



Opium cultivation and production in Afghanistan, 1994-2023



Example of opium poppy fields identified in 2022 (green) and 2023 (purple) in Helmand province



Nitazenes

Like
wise

Heroin	1
Fentanyl	50
Metonitazene	50
Protonitazene	100
Isotonitazene	250
Etonitazene	500

Criminal Justice



- Our criminal justice team offer support to service users who come through the criminal justice system. Offering effective interventions to reduce offending and improve the lives of individuals and the wider community.
 - The courts
 - Probation
 - Prisons
 - Screening & offer of support within police cells
 - DRR Drug rehabilitation Requirement_{nt}



- tment Requirement

Recovery Navigation

**Like
wise**



Every service user who enters our service will be allocated a recovery navigator who will support them through their journey to recovery.

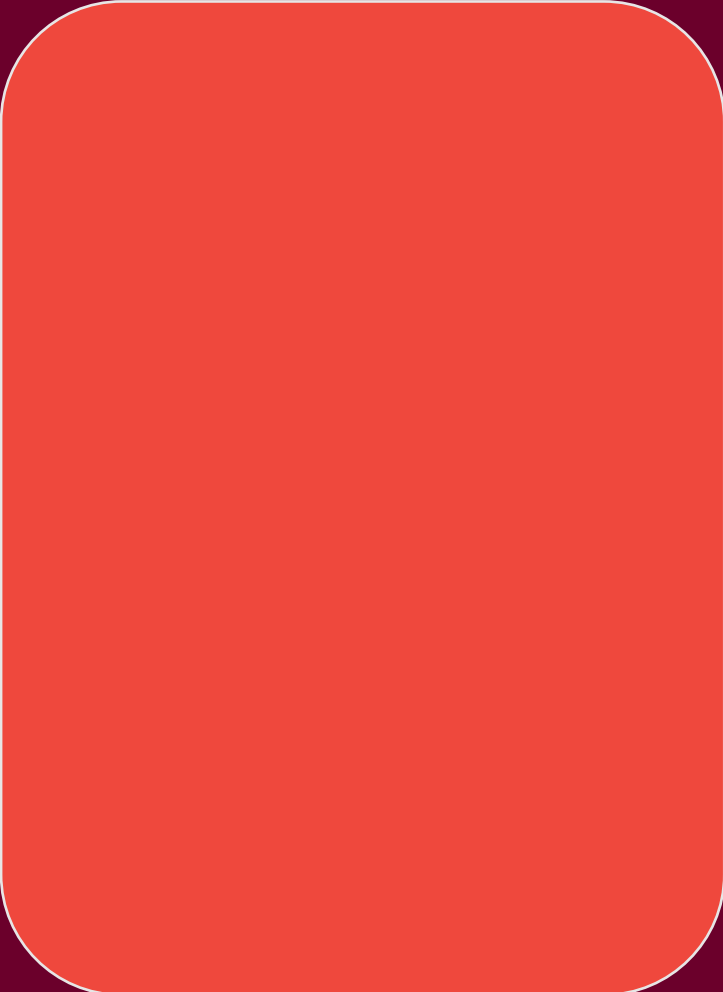
- **1-1 support**
- **Substance misuse interventions**
- **Psychosocial Interventions**
- **Case management**
- **Referral into other services**
- **Support around medical interventions**
- **Advice, information**

Co-Occurring Needs Team

Psychologist
2 x Mental Health Nurses
2 x Trainee Mental Health & Well-being
Workers

Working alongside Recovery Navigators to provide Support and
Guidance

Medical Interventions

- 
- A large, solid red rounded rectangle is positioned on the left side of the slide, partially overlapping the list of medical interventions.
- Prescribing based interventions
 - Relapse prevention medication
 - Reduction programmes
 - Medically assisted detoxification from opiates and/or alcohol (community and inpatient)
 - BBV risk assessment, testing, immunisation and referral

Community Outreach

Like
wise



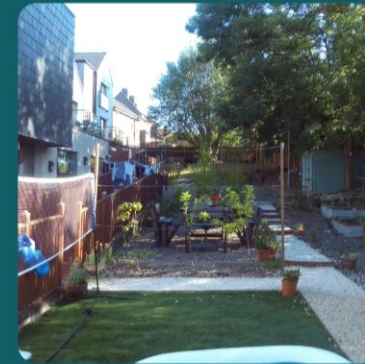
The Greens Detox Beds

- Widens the choice for those requiring detoxification
- Enables people to recover in their own community and establish networks and support that enables sustainable recovery
- First two patients completed stabilization and detox prior to Christmas – positive feedback
- Weekly detox panel in place to determine most appropriate detox pathway for individuals on the detox pathway
- Provide funding for out of area IPD and Residential Rehab

The Recovery Beds programme

A supportive detox programme designed to help you get back on your feet.

The Greens will help you find your Waythrough.



 **Waythrough**
The Greens

**Like
wise**

Additional posts

Like
wise



- EDI Community Connector
- Harm Reduction Lead
- 2 x IPS roles – designed for those with Lived Experience



SWWOP and Buvigals Programme



SWWOP and the Buvigals Supporting Female Sex Workers' Health and Recovery: A Two-Year funded Project

Like
wise

Introduction

SWWOP (Sheffield Working Women's Opportunities Project) and Likewise Sheffield (a Waythrough service, partnered with Project 6) have launched a two-year funded project to support female sex workers (FSWs). This project aims to provide access to Long-Acting Injectable Buprenorphine (LAI-Bup) for up to 10 women at any one time, alongside comprehensive healthcare services, through a whole health approach. It is designed to address the complex health and well-being needs of FSWs, with a focus on improving both addiction recovery and overall health outcomes.



Objectives

- ▶ To offer sexual health support (advice, screening, contraception) and respiratory health services.
- ▶ To provide Long-Acting Injectable Buprenorphine (LAI-Bup) to female sex workers as part of their recovery programme.
- ▶ To assess the impact of integrated healthcare services on the recovery and well-being of participants.
- ▶ To explore the feasibility and effectiveness of this model for wider application in supporting vulnerable groups.

Early results

"We currently have 10 on project, with 7 who are on Bupival. The GP drop-in on Wednesday also saw 7 women access the service which is incredible for this cohort. Alongside this, 5 women have had their flu & COVID jabs this week, and 3 have registered with a dentist!"

Project Scheme Overview

- Location: The project is delivered from a pharmacy adjacent to SWWOP, ensuring easy access for participants.
- Staffing: Staffed by professionals in addiction recovery, sexual health, and general healthcare, collaborating closely to provide holistic support.
- Duration: The project will run for two years, providing ample time to gather data and assess the impact.

Expected Outcomes

- ▶ Improved Health: Participants are expected to show improvements in physical health, including reduced substance use and better sexual and respiratory health.
- ▶ Enhanced Well-being: Better mental health - increased self-reported well-being and empowerment.
- ▶ Long-term Impact: The project aims to contribute valuable insights into how integrated healthcare can improve the lives of sex workers.

Evaluation Methods

The project will be evaluated through:

- Qualitative Feedback: Interviews and surveys to assess participants' experiences and perceptions of the service.
- Long-Term Tracking: Monitoring participants' outcomes throughout the two years to evaluate sustained impacts on recovery and health.

Example questionnaire

For more information, please contact:

Dr Shelley Jackson - GP Lead, Likewise, Sheffield.

Email: shelly.jackson@likewiseshfield.org.uk

Likewise is Sheffield's alcohol and drug treatment and support service, led by national charity Waythrough in partnership with Project 6.

Contact Likewise
0114 308 7000
info@likewiseshfield.org.uk
www.likewiseshfield.org.uk

Contact Swwop
(0114) 253 6899
info@swwop.org

Acknowledgments:
We are very grateful to: The SWWOP team, particularly Mary Brown. The health and wellbeing team at Likewise - Sophie Golland, Lydia Flower, Bettie Kirkson. Thank you for all your hard work.

Whole Health Approach

This model integrates addiction recovery with broader healthcare needs. It offers:

Addiction Services: LAI-Bup administered to manage opioid dependency, improving engagement with treatment.

Sexual Health: Free advice, screenings, and contraception options to prevent and manage sexually transmitted infections (STIs) and ensure reproductive health.

Respiratory Health: Screening and support for conditions such as chronic obstructive pulmonary disease (COPD), common among sex workers.

Mental Health & Well-being: Tailored support services to address the psychological and emotional health of participants.

"Just had a phone call from Patient Z - Said Bupival is the best thing that has ever happened to her and she feels like she has her life and freedom back!"



Conclusion

This project aims to provide female sex workers in Sheffield with the healthcare support they need for recovery, health, and overall well-being. By offering holistic wraparound care we hope to demonstrate the effectiveness of this model in promoting long-term improvements in the lives of vulnerable individuals. If successful, this approach could serve as a model for other cities to replicate and expand upon.

"8 on Bupival with 1 starting on Wednesday! All have accessed GP since the healthcare provision has began at SWWOP. Patient X is on her second course at Northern College - no sex work since starting!"

swwop

Waythrough

Recovery Hub pathway

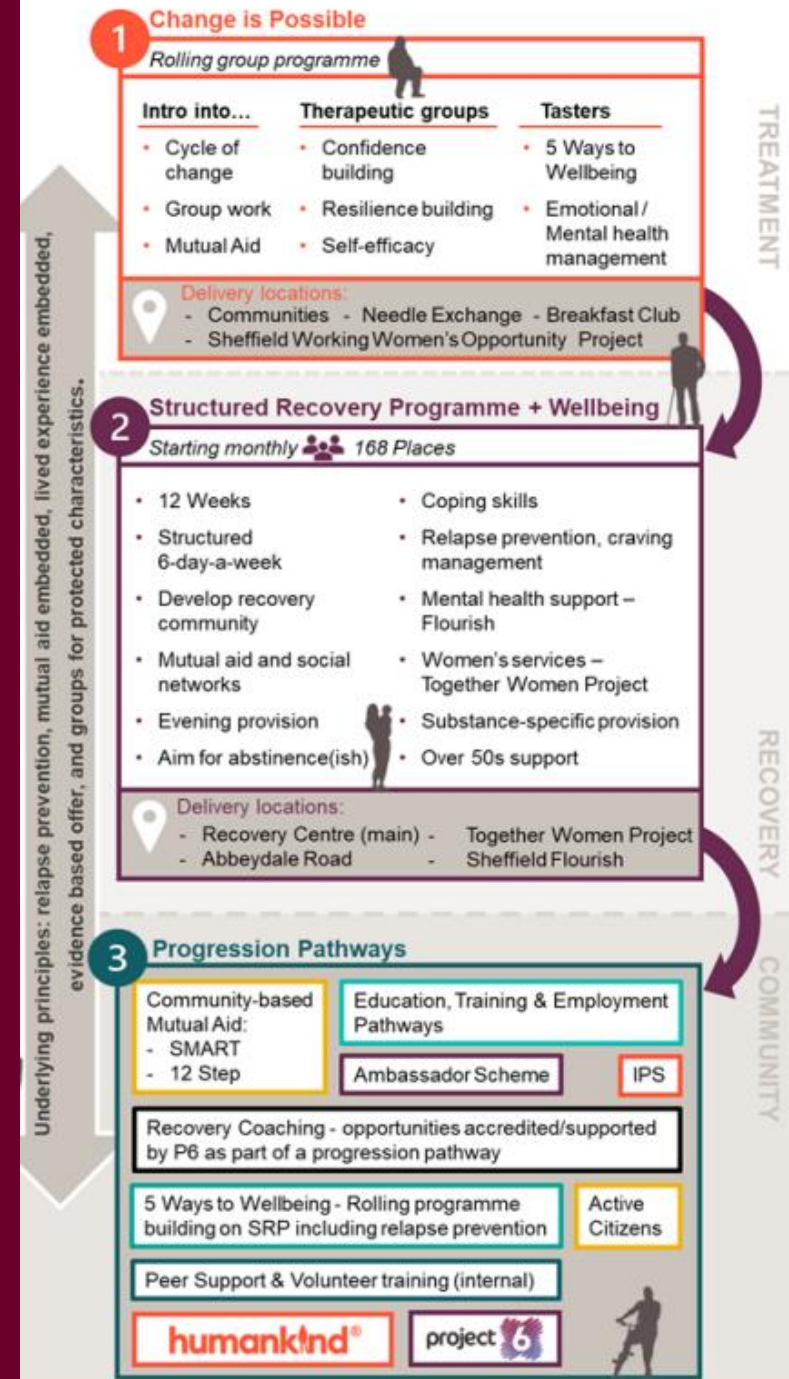


Ambassadors Programme



Structured Recovery Programme

Special events like Black History Month celebration.



How to Refer



- Self Refer
- Professional Referral
- Single Point of Contact 0114 308 7000
- Online Referral via the website
- Drop-in

For more information, please visit our website

<https://likewisesheffield.org.uk>