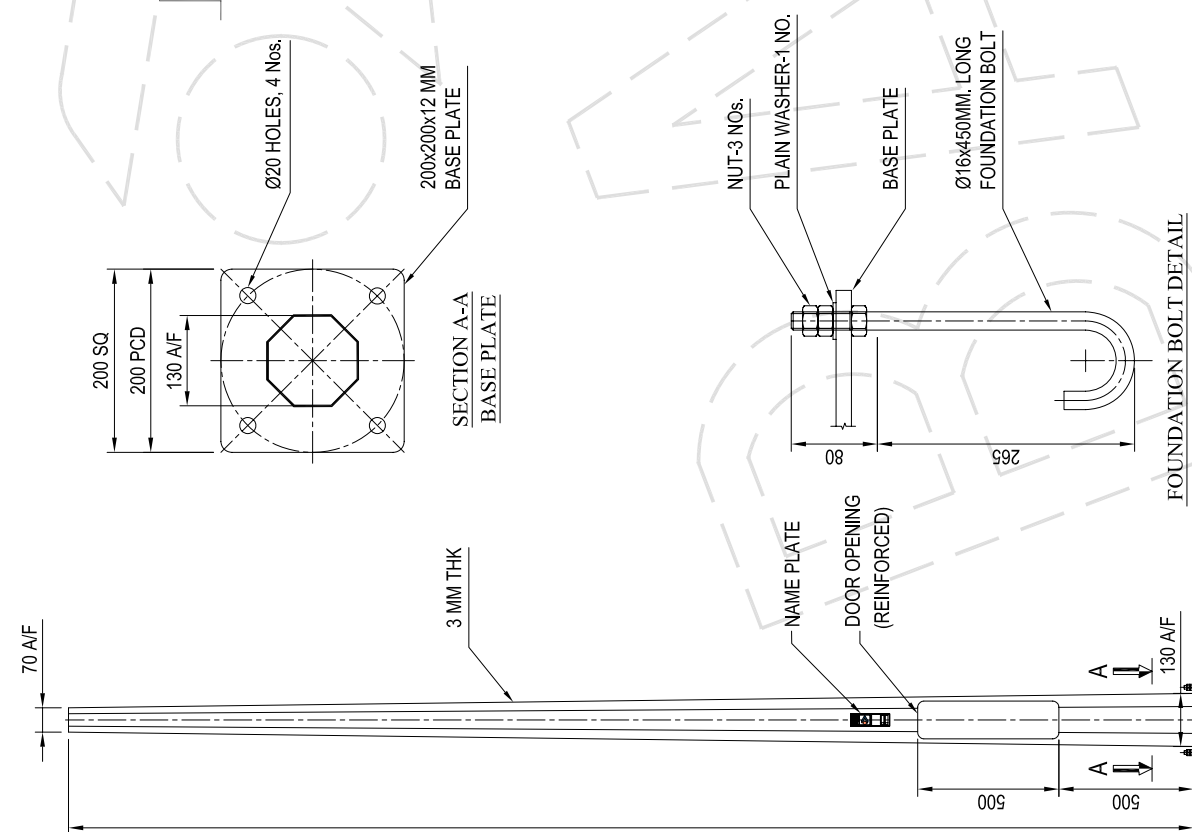
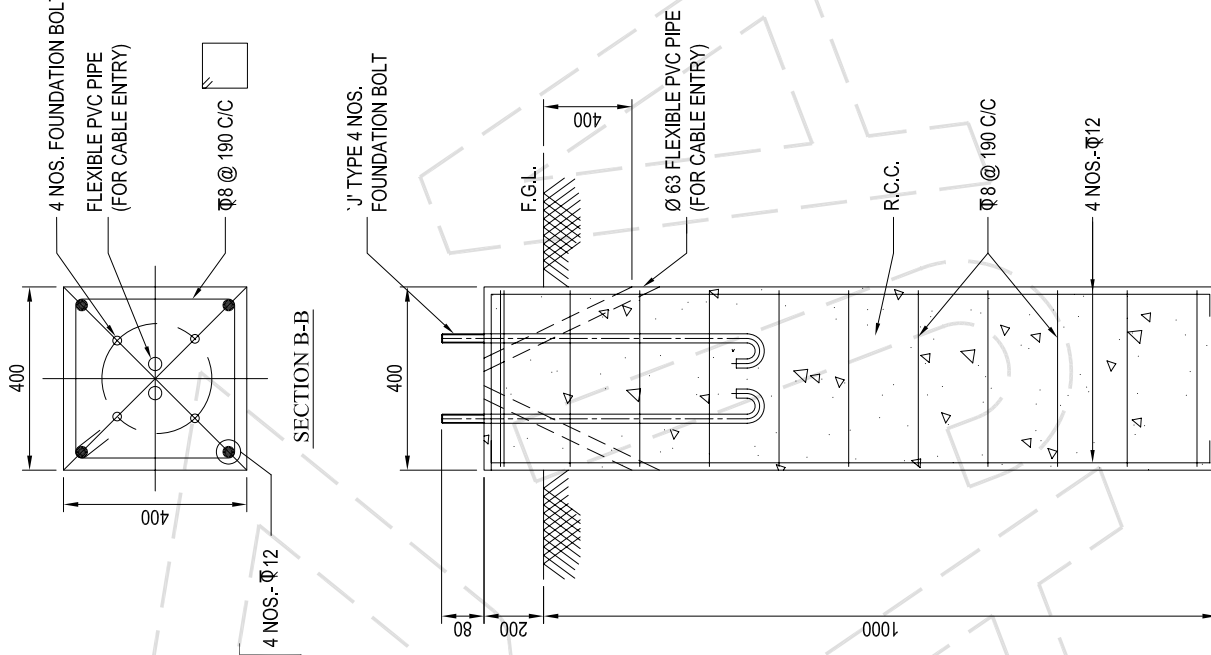


NOTES :-

1. ALL DIMENSIONS ARE IN M.M.
2. DESIGN STANDARD BS EN 40-3-1&3
3. DESIGN CRITERIA :
 - 3.1. BASIC WIND SPEED - IS : 875 PART III : 1987
 - 3.2. DESIGN LIFE - 25 YEARS.
 - 3.3. TERRAIN CATEGORY - 2
 - 3.4. TOPOGRAPHY - FLAT
4. MATERIALS :
 - 4.1. SHAFT : S355 AS PER BS EN 10025.
 - 4.2. FLANGE : AS PER IS-2062.
 - 4.3. FOUNDATION BOLTS : EN8 GRADE
5. FINISHING : HOT DIP GALVANIZED TO BS EN ISO 1461.
6. MAKE OF THE POLE "BAJAJ".

FOUNDATION NOTES :-

1. ASSUMED S.B.C. - 10 T/M² (MINIMUM)
2. GRADE OF R.C.C - M20
3. GRADE OF STEEL REINFORCEMENT Fe - 415
4. CLEAR COVER TO REINFORCEMENT - 50 MM
5. CONCRETE VIBRATED
6. USE SHUTTERING



BOP 4030

TOLERANCES :-

DIAMETERS A/F	± 25 %
POLE TOTAL LENGTH	± 1.2 %
POLE STRAIGHTNESS	± 0.3 %

CLIENT	4M OCTAGONAL POLE			
PROJECT	INDICATIVE GENERAL ARRANGEMENT			
CONTRACTOR	BAJAJ ELECTRICALS			
MANUFACTURER	BAJAJ ELECTRICALS			
TITLE	INDICATIVE GENERAL ARRANGEMENT			
DRWN BY	SEM	JOB NO.	DRG. NO.	DATE
DSSD BY	HVR			10.05.2016
CHKD BY	SRH			SHT 1 OF 1
APPRD BY	CSM			REV. NO. 00
			EPC-SL-OCT-4M-130-70-3-S	

DETAIL OF CIVIL FOUNDATION

FOUNDATION BOLT DETAIL

ELEVATION

This drawing is the property of "BAJAJ ELECTRICALS, LTD." & must be returned on request. It is submitted as confidential information in connection with enquiry, tenders, orders or contracts. It is not to be used for any other purpose or order nor may it be re-copied or lent without our authority in writing.