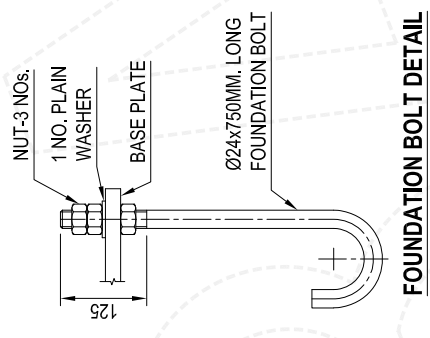
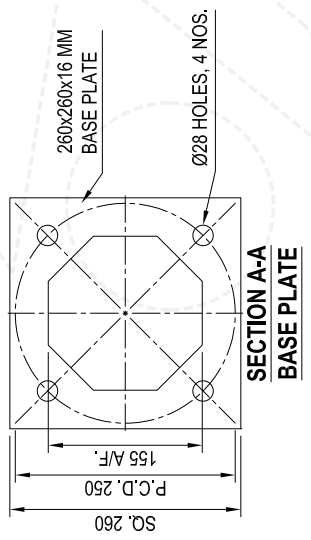
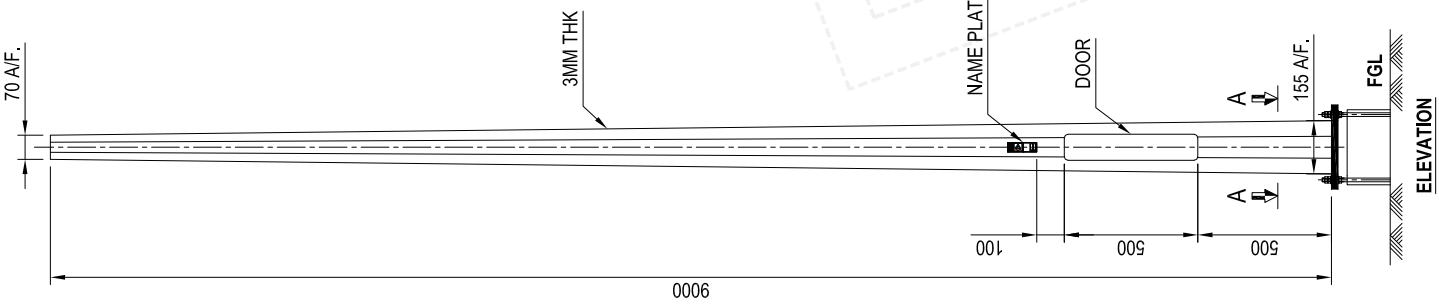


NOTES :-

1. ALL DIMENSIONS ARE IN M.M.
2. DESIGN STANDARD BS EN 40-3-1&3
3. DESIGN CRITERIA :
 - 3.1. BASIC WIND SPEED - IS : 875 PART III : 1987
 - 3.2. DESIGN LIFE - 25 YEARS.
 - 3.3. TERRAIN CATEGORY - 2
 - 3.4. TOPOGRAPHY - FLAT
4. MATERIALS :
 - 4.1. SHAFT : AS PER BS EN 10025/ IS 2062 HAVING MINIMUM YIELD STRENGTH OF 350 N/SQMM
 - 4.2. FLANGE : AS PER IS-2062.
 - 4.3. FOUNDATION BOLTS : EN-8 GRADE
5. FINISHING : HOT DIP GALVANIZED TO BS EN ISO 1461.
6. TOLERANCES SHALL BE AS PER BS EN 40-2 UNLESS OTHERWISE SPECIFIED IN THE DRAWING
7. MAKE OF THE POLE "BAJAJ".



TOLERANCES :-	
DIAMETERS A/F	± 2.5 %
POLE TOTAL LENGTH	± 1.2 %
POLE STRAIGHTNESS	± 0.3 %

CLIENT	TURNING POINT		
PROJECT	STREET LIGHTING		
CONTRACTOR	-----		
MANUFACTURER	BAJAJ ELECTRICALS Engineering, Procurement, Construction Leaders in Lighting & Power Systems		
TITLE	INDICATIVE GENERAL ARRANGEMENT DRAWING OF 9M OCTAGONAL POLE		
DRWN BY	TM	PROJECT CODE	DRG. NO.
DSGD BY	UM	1512007038	
CHKD BY	UM	DESIGN CODE	
APPRD BY	CSM		
DATE	10.07.2020		SHEET 01 OF 01
REV. NO.	EPC-SL-20-1512007038-OP-001		REV. NO. 00

This drawing is the property of "BAJAJ ELECTRICALS LTD." & must be returned on request. It is submitted as confidential information in connection with enquiry, tenders, orders or contracts. It is not to be used for any other purpose or order nor may it be re-copied or lent without our authority in writing.

REV/NO	DATE	REVISION DESCRIPTION	DRWN	CHKD	APPRD