

NOTES :-

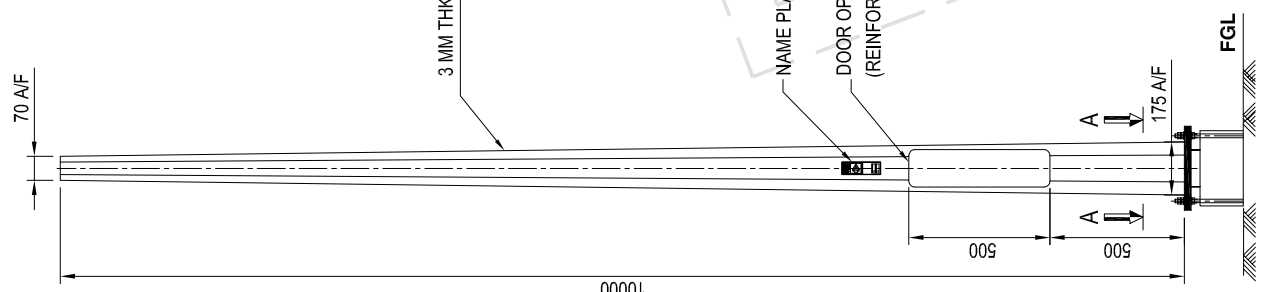
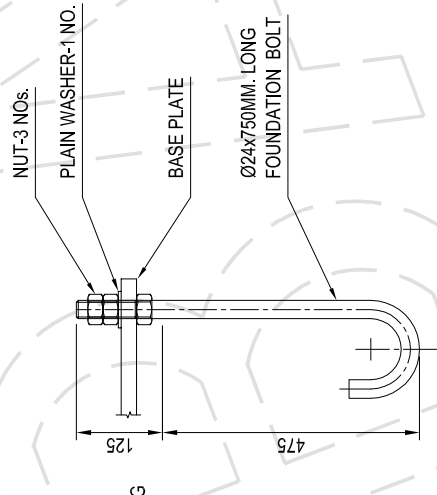
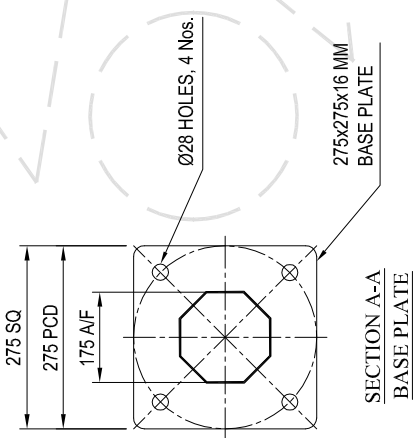
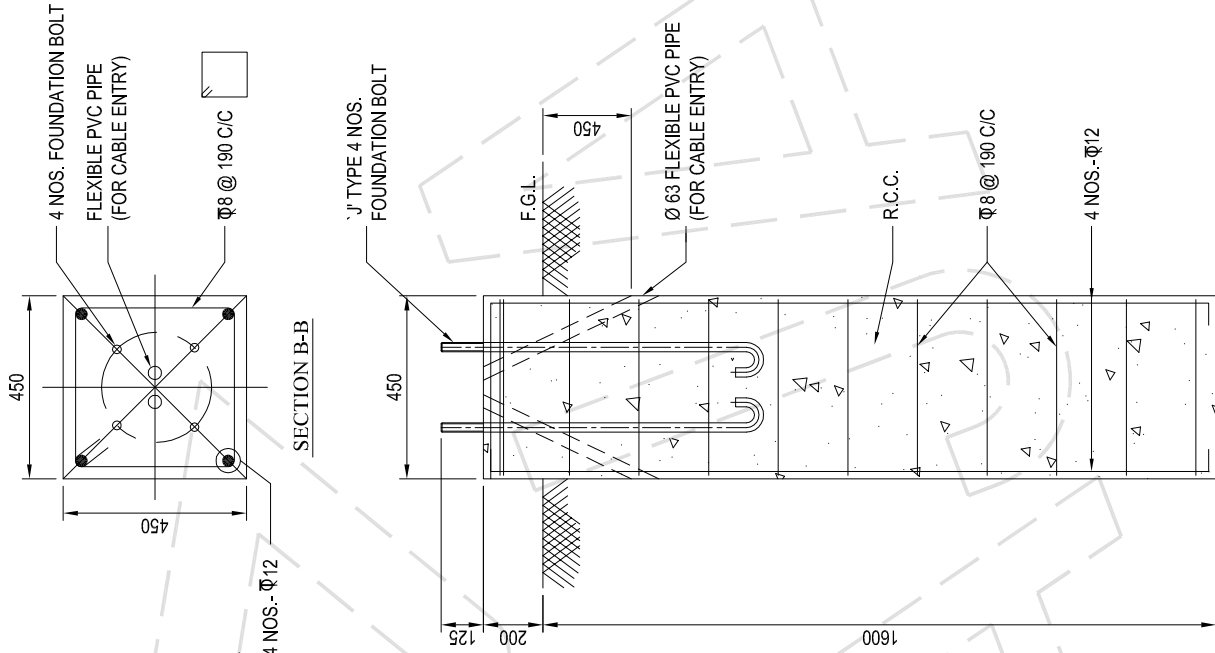
1. ALL DIMENSIONS ARE IN M.M.
2. DESIGN STANDARD BS EN 40-3-1&3
3. DESIGN CRITERIA :
 - 3.1. BASIC WIND SPEED - IS : 875 PART III - 1987
 - 3.2. DESIGN LIFE - 25 YEARS.
 - 3.3. TERRAIN CATEGORY - 2
 - 3.4. TOPOGRAPHY - FLAT
4. MATERIALS :
 - 4.1. SHAFT: S355 AS PER BS EN 10025.
 - 4.2. FLANGE: AS PER IS-2062.
 - 4.3. FOUNDATION BOLTS : EN8 GRADE
5. FINISHING : HOT DIP GALVANIZED TO BS EN ISO 1461.
6. MAKE OF THE POLE "BAJAJ".

FOUNDATION NOTES :-

1. ASSUMED S.B.C. - 10 T/M² (MINIMUM)
2. GRADE OF R.C.C - M20
3. GRADE OF STEEL REINFORCEMENT Fe - 415
4. CLEAR COVER TO REINFORCEMENT - 50 MM
5. CONCRETE VIBRATED
6. USE SHUTTERING

BOP 1030

| | |
|-------------------|--------|
| TOLERANCES :- | |
| DIAMETERS A/F | ± 2.5% |
| POLE TOTAL LENGTH | ± 1.2% |
| POLE STRAIGHTNESS | ± 0.3% |



DETAIL OF CIVIL FOUNDATION

This drawing is the property of "BAJAJ ELECTRICALS LTD." & must be returned on request. It is submitted as confidential information in connection with enquiry, tenders, orders or contracts. It is not to be used for any other purpose or order nor may it be re-copied or lent without our authority in writing.

| | | | | |
|--------------|-------------------------------------------------------------------------------------------------------|---------|----------|--------------------------|
| CLIENT | 10M OCTAGONAL POLE | | | |
| PROJECT | CONTRACTOR | | | |
| MANUFACTURER | BAJAJ ELECTRICALS Engineering, Manufacturing & Construction Leaders in Lighting & Power Systems | | | |
| TITLE | INDICATIVE GENERAL ARRANGEMENT DWG. FOR 10M OCTAGONAL POLE | | | |
| DATE | 10.05.2016 | | | |
| DRWN BY | SEM | JOB NO. | DWG. NO. | DATE |
| DSSD BY | HVR | | | SHT 1 OF 1 |
| CHKD BY | SRH | | | REV. NO. 00 |
| APPRD BY | CSM | | | EPC-SL-OCT-10M-75-70-3-S |

| REV | DATE | REVISION |
|-----|------|----------|
| 03 | | |
| 02 | | |
| 01 | | |