

**SURYA**

Brighter  
moments on a  
darker night



Professional Lighting

Effective 1st May, 2022



NHAI Highway Street Lighting By Surya

# SURYA

The Surya Luminaire Business Group (LBG) is known for its expertise in selling Technical Lighting Solutions. The group owns superior and sophisticated technology in its in-house Surya Technology & Innovation Centre (R&D centre) at Noida which is NABL accredited and approved by DSIR (Department of Scientific & Industrial Research), Govt. of India.

Luminaires are designed and manufactured in-house at our ultra-modern Kashipur & Gwalior plants. It is swiftly capturing the LED industry with the manufacturing of quality products.

Professional lighting solutions offered by LBG includes Indoor, Street Lighting, Industrial, Landscape and Architectural Lighting fixtures. Customized LED lighting solutions for all types of light fixtures are available. With strategic tie-ups with intelligent system integrators, LBG has the capability and know-how to propose illumination designs, execute intelligent lighting installations with remote monitoring & dimming functionalities.

The latest luminaires range equip the world to co-exist with principles of "save energy", "save the environment" and "enhanced value for money".

**Better products with better technology from Surya make the world a brighter, happier place to live in.**





# The Magnificent “Kedarnath Temple”

Facade Lighting Project Completed By Surya





# Surya Manufacturing Facilities



Kashipur Plant



Malanpur Plant



Bhuj Plant



Bahadurgarh Plant



R & D Centre



Hindupur Plant





Leh Palace Lighting Project Completed By Surya



# Index

<b>Indoor Commercial</b>	<b>11</b>
Recessed Mounted	12
Recessed-Surface Mounted	14
Linear Recessed - Suspended	16
Suspended Luminaire	17
Tube Light	18
<b>Retail Lighting</b>	<b>23</b>
COB Recessed	24
Tracklight	24
Truck Light	25
<b>Indoor Industrial</b>	<b>29</b>
Highbays	30
Waterproof LED Luminaires	32
Industrial Battens	32
Bulkhead & Cleanroom	33
<b>Street Lighting</b>	<b>37</b>
Smart Street Lighting	38
Street Lighting - Lexon	40
Street Lighting - Pollux	41
Street Lighting - Pollux XL	42
Street Lighting - NewGen	43
<b>Flood Lighting</b>	<b>49</b>
Flood Light	50
Tunnel Light	52
<b>Landscape Lighting</b>	<b>55</b>
Tops	56
Bollards	58
Bush Light	60
Spike Light	60
Step Light	60
Decorative Poles	61
<b>Facade Lighting</b>	<b>65</b>
Linear LED	66
SFL Flood Light	66
RFL Flood Light	67
Solar Lighting	70
Solar All In One	71
Solar All In One - CCTV	73
Solar Standalone	74
Solar Flood Light	74
Solar Roof Top	75
Solar Highmast	76
<b>Highmast Pole Series</b>	<b>80</b>
<b>Sensors</b>	<b>83</b>

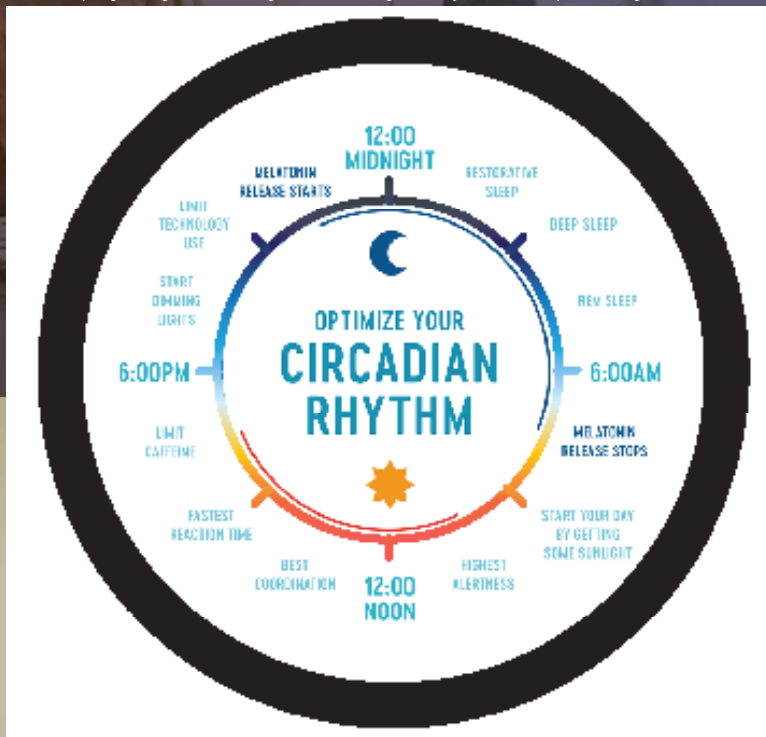


Sunrise  
<2000K

Morning  
<3500-4500K

# Circadian Rhythm

Circadian rhythms are physical, mental, and behavioral changes that follow a daily cycle. They respond primarily to light and darkness in an organism's environment. Sleeping at night and being awake during the day is an example of a light-related



**Noon**  
**<5500-6500K**

**Afternoon**  
**<3500-4500K**

**Sunset**  
**<2000K**









**Indoor  
Commercial**

**Athena LED**

Edgelit Recessed  
Downlight - Square



Recessed Mounted square slim & Elegant Downlight Panel made of aluminium PDC housing for indoor application with high aesthetic appeal for uniform light. XX denotes for available CCT: 3K, 4K, 6K

Cat. Ref.	Wattage	Case Lot	MRP
ATHENA SLE DLR 3W XX SQ	3W	20	700
ATHENA SLE DLR 6W XX SQ	6W	20	900
ATHENA SLE DLR 12W XX SQ	12W	20	1300
ATHENA SLE DLR 15W XX SQ	15W	20	1400
ATHENA SLE DLR 18W XX SQ	18W	20	1800

**Athena LED**

Edgelit Recessed  
Downlight - Round



Recessed Mounted round slim & Elegant Downlight Panel made of aluminium PDC housing for indoor application with high aesthetic appeal for uniform light. XX denotes for available CCT: 3K, 4K, 6K

Cat. Ref.	Wattage	Case Lot	MRP
ATHENA SLE DLR 3W XX RD	3W	20	700
ATHENA SLE DLR 6W XX RD	6W	20	900
ATHENA SLE DLR 12W XX RD	12W	20	1300
ATHENA SLE DLR 15W XX RD	15W	20	1400
ATHENA SLE DLR 18W XX RD	18W	20	1800

**Athena LED**

Edgelit Surface  
Downlight - Square



Surface Mounted square Downlight Panel made of aluminium PDC housing for indoor application with high aesthetic appeal for uniform light. XX denotes for available CCT: 3K, 4K, 6K

Cat. Ref.	Wattage	Case Lot	MRP
ATHENA SLE DLS 3W XX SQ	3W	20	900
ATHENA SLE DLS 6W XX SQ	6W	20	1100
ATHENA SLE DLS 12W XX SQ	12W	20	1600
ATHENA SLE DLS 15W XX SQ	15W	20	1700
ATHENA SLE DLS 18W XX SQ	18W	20	2100

**Athena LED**

Edgelit Surface  
Downlight - Round



Surface Mounted round Downlight Panel made of aluminium PDC housing for indoor application with high aesthetic appeal for uniform light. XX denotes for available CCT: 3K, 4K, 6K

Cat. Ref.	Wattage	Case Lot	MRP
ATHENA SLE DLS 3W XX RD	3W	20	900
ATHENA SLE DLS 6W XX RD	6W	20	1100
ATHENA SLE DLS 12W XX RD	12W	20	1600
ATHENA SLE DLS 15W XX RD	15W	20	1700
ATHENA SLE DLS 18W XX RD	18W	20	2100



**Rivo LED**

Backlit Recessed  
Downlight - Square



Next generation recessed mounted square LED Downlight made of aluminium PDC with high lumen package, for Indoor application. RIVO is highly efficient downlighter with low glare. Option with dimmable 1-10V and DALI available on request. XX denotes for available CCT: C1, C2, C5

Cat. Ref.	Wattage	Case Lot	MRP
SLE DLR 6W RIVO SQ XX	6W	20	1900
SLE DLR 9W RIVO SQ XX	9W	20	2000
SLE DLR 12W RIVO SQ XX	12W	20	2200
SLE DLR 15W RIVO SQ XX	15W	20	2500
SLE DLR 18W RIVO SQ XX	18W	10	2600
SLE DLR 24W RIVO SQ XX	24W	10	3100

**Rivo LED**

Backlit Recessed  
Downlight - Round



Next generation recessed mounted round LED Downlight made of aluminium PDC with high lumen package, for Indoor application. RIVO is highly efficient downlighter with low glare. Option with dimmable 1-10V and DALI available on request. XX denotes for available CCT: C1, C2, C5

Cat. Ref.	Wattage	Case Lot	MRP
SLE DLR 6W RIVO RD XX	6W	20	1900
SLE DLR 9W RIVO RD XX	9W	20	1950
SLE DLR 12W RIVO RD XX	12W	20	2000
SLE DLR 15W RIVO RD XX	15W	20	2400
SLE DLR 18W RIVO RD XX	18W	10	2500
SLE DLR 24W RIVO RD XX	24W	10	2900

**Rivo LED**

Backlit Surface  
Downlight - Square



Next generation surface mounted square LED Downlight made of aluminium PDC with high lumen package, for Indoor application. RIVO is highly efficient downlighter with low glare. Option with dimmable 1-10V and DALI available on request. XX denotes for available CCT: C1, C2, C5

Cat. Ref.	Wattage	Case Lot	MRP
SLE DLS 6W RIVO SQ XX	6W	20	2400
SLE DLS 9W RIVO SQ XX	9W	20	2500
SLE DLS 12W RIVO SQ XX	12W	20	2600
SLE DLS 15W RIVO SQ XX	15W	20	3100
SLE DLS 18W RIVO SQ XX	18W	10	3500
SLE DLS 24W RIVO SQ XX	24W	10	3800

**Rivo LED**

Backlit Surface  
Downlight - Round



Next generation surface mounted round LED Downlight made of aluminium PDC with high lumen package, for Indoor application. RIVO is highly efficient downlighter with low glare. Option with dimmable 1-10V and DALI available on request. XX denotes for available CCT: C1, C2, C5

Cat. Ref.	Wattage	Case Lot	MRP
SLE DLS 6W RIVO RD XX	6W	20	2600
SLE DLS 9W RIVO RD XX	9W	20	2600
SLE DLS 12W RIVO RD XX	12W	20	2700
SLE DLS 15W RIVO RD XX	15W	20	3300
SLE DLS 18W RIVO RD XX	18W	10	3400
SLE DLS 24W RIVO RD XX	24W	10	4000

**Astrum LED**

Backlit Recessed Panel



Recessed mounted LED Luminaire with CRCA housing and with its ultra bright LEDs provides uniform light distribution which make it best in class proposition for modern work spaces. Suitable for armstrong/grid ceiling, an additional mounting frame is required for gypsum/POP ceiling installations on additional cost. CCT: C1, C2 C4, C5, Tunable and Dimmable (DALI) available on request. Higher 150lm/W is available with suffix G7.

Cat. Ref.	Wattage	Case Lot	MRP
SLE DS 20 11R-ASTRUM	20W	2	3800
SLE DS 30 22R-ASTRUM	30W	2	6400
SLE DS 36 22R-ASTRUM	36W	2	6400
SLE DS 40 22R-ASTRUM	40W	2	6500
SLE DS 24 22R - ASTRUM G1	24W	2	8300
SLE DS 24 22R - ASTRUM G7	24W	2	8300
SLE DS 30 22R-ASTRUM G7	30W	2	8400
SLE DS 36 22R-ASTRUM G7	36W	2	8400

**Astrum LED**

Backlit Surface Panel



Surface mounted LED Luminaire with CRCA housing and with its ultra bright LEDs provides uniform light distribution which make it best in class proposition for modern work spaces. CCT: C1, C2 C4, C5, Tunable and Dimmable (DALI) available on request. Higher 150lm/W is available with suffix G7.

Cat. Ref.	Wattage	Case Lot	MRP
SLE DS 20 11S-ASTRUM	20W	2	4300
SLE DS 30 22S-ASTRUM	30W	2	7000
SLE DS 36 22S-ASTRUM	36W	2	7100
SLE DS 40 22S-ASTRUM	40W	2	7200

### Astrum LED

Backlit Recessed Panel  
(PIR & Dimmable Tunable)



Recessed mounted LED Luminaire with CRCA housing with occupancy sensors and dimmable tunable function with RF remote (cost of remote shall be extra). Its ultra bright LEDs provides uniform light distribution which make it best in class proposition for modern work spaces. Suitable for armstrong/grid ceiling, an additional mounting frame is required for gypsum/POP ceiling installations on additional cost.



Cat. Ref.	Wattage	Case Lot	MRP
SLE DS 36 22R-ASTRUM PIR	36W	2	10200
SLE DS 42 22R-ASTRUM PIR	42W	2	10400
SLE DS 36 22R-ASTRUM C68 DA6 RF	36W	2	16800

### Astrum LED

Backlit Recessed Panel 4x1

Recessed mounted LED Luminaire with CRCA housing suitable for direct ceiling mounting. It's ultra bright LEDs provides glare free and uniform light distribution for modern work space. CCT: C1, C2, C4, C5, Tunable and Dimmable (DALI) available on request.



Cat. Ref.	Wattage	Case Lot	MRP
SLE DS 36 41R-ASTRUM	36W	2	10200
SLE DS 42 41R-ASTRUM	42W	2	10400

### Celesta Evo LED

Recessed Panel

Celesta Evo is trendy, aesthetically designed recessed luminaire for armstrong/grid ceiling mounting application. An additional mounting frame required for gypsum/POP ceiling installation on additional cost. Available CCT :C1, C2, C4, C5.



Cat. Ref.	Wattage	Case Lot	MRP
SLE CD 36 22 R	36W	2	9400

### Ultron LED

Edgelit Ultra Slim Recessed Panel

Edgelit ultra slim LED edgelit panel made from extruded aluminium frame & super bright LED's. Available CCT :C1, C2, C4, C5.



Cat. Ref.	Wattage	Case Lot	MRP
SLE FP 36 R22	36W	2	6400



**Pluto LED**

Recessed - Techzone



LED Recessed Techzone panel with super bright LEDs, suitable for Techzone ceiling. Available CCT 3K, 4K, 5K, 6K. Tunable and Dimmable (DALI) available on request.

Cat. Ref.	Wattage	Case Lot	MRP
SLE DS 20 TZ	20W	2	9100
SLE DS 28 TZ	28W	2	9700
SLE DS 36 TZ	36W	2	10400

**Leo LED**

Linear Recessed

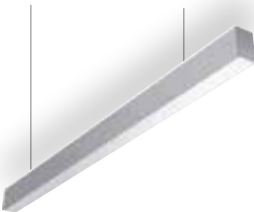


Recessed mounted LED linear light, suitable for seamless linear lighting. Housing colours are available in black and silver on request. Tunable and Dimmable (DALI) available on request. Seamless End to End connectivity solution is also available. XX denotes for available CCT: 3K, 4K, 5K, 6K.

Cat. Ref.	Wattage	Case Lot	MRP
SLE BLSM 6638R 36 LL XX	36W	2	12300

**Corvus LED**

Linear Suspended

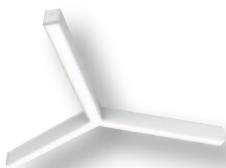


Surface/ Suspended mounted LED linear light, suitable for seamless linear lighting. Continuous mounting solution available on request, housing colour available in black and silver on request. Tunable and Dimmable (DALI) available on request. Seamless End to End connectivity solution is also available. XX denotes for available CCT: 3K, 4K, 5K, 6K.

Cat. Ref.	Wattage	Case Lot	MRP
SLE BLSM 5473S 36 LL XX	36W	2	11700
SLE BLSM 7090S 36 LL XX	36W	2	15600

**Linear LED**

Suspended - Y Joint



Cat. Ref.	Wattage	Case Lot	MRP
SLE BLSM 5473S Y JOINT	NA	2	POR
SLE BLSM 7090S Y JOINT	NA	2	POR

### Linear LED

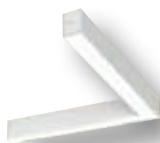
Suspended + Joint



Cat. Ref.	Wattage	Case Lot	MRP
SLE BLSM 5473S + JOINT	NA	2	POR
SLE BLSM 7090S + JOINT	NA	2	POR

### Linear LED

Suspended L Joint



Cat. Ref.	Wattage	Case Lot	MRP
SLE BLSM 5473S L JOINT	NA	2	POR
SLE BLSM 7090S L JOINT	NA	2	POR

### Aurora I LED

Linear Suspended Up-Down



Decorative edgelit LED Suspended linear made of aluminium extrusion housing for Up & Down light application with uniform effect. Housing colours are available in black and silver on request. XX denotes for available CCT: 3K, 4K, 5K, 6K.

Cat. Ref.	Wattage	Case Lot	MRP
SLE BLSM 36S AURORA -I XX	36W	1	17500

### Aurora II LED

Slim Linear Suspended Up-Down



Decorative ultra slim edgelit LED Suspended linear made of aluminium extrusion housing for Up & Down light application with uniform effect. Housing colours are available in black and silver on request. Tunable CCT option available on request. XX denotes for available CCT: 3K, 4K, 5K, 6K.

Cat. Ref.	Wattage	Case Lot	MRP
SLE BLSM 36S AURORA - II XX	36W	1	25900

**Aurora III LED** 

Linear Suspended  
Up-Down



\*Decorative Slim LED Suspended light with Up & Down Light. Tunable CCT option available on request.  
XX denotes for available CCT: C1, C2, C4, C5.

Cat. Ref.	Wattage	Case Lot	MRP
SLE BLSM 36S AURORA - III XX	36W	1	25200

**Selena LED**

Suspended



Round Decorative LED Suspended light with Up & Down Light with uniform effect.  
XX Denote for available CCT: 3K, 4K, 5K & 6K

Cat. Ref.	Wattage	Case Lot	MRP
SLE BLSM 18S SELENE XX	18W	1	18100
SLE BLSM 36S SELENE XX	36W	1	25900
SLE BLSM 54S SELENE XX	54W	1	29100

**Neo T8 - LED Tube**

Aluminium



Environment friendly, energy saving, T8 LED tube, with aluminium extrusion heat sink for optimum performance, with high luminous efficacy and easy replacement of T8 36W conventional lamp.

Cat. Ref.	Wattage	Case Lot	MRP
SLE TL DS 18 P AL EXT	18W	10	1100

**Neo T8 - LED Tube**

PC



Environment friendly, energy saving, T8 LED tube in PC housing, high luminous efficacy and easy replacement of T8 conventional lamp.

Cat. Ref.	Wattage	Case Lot	MRP
SLE TL DS 20 PC REFORM (NANO)	20W	10	800
SLE TL-DS 9PC REFORM (NANO)	9W	10	700

**Neo T5 - LED Tube**

Aluminium (Non Integrated Driver)



Environment friendly, energy saving, T5 LED tube in AL housing, high luminous efficacy and easy replacement of T5 28/14W lamp.

Cat. Ref.	Wattage	Case Lot	MRP
SLE TL DS 18P T5	18W	10	1600

## Visco LED Batten

Aluminium



A trendy wall/ceiling mounted slim LED Batten, with extruded aluminium housing & polycarbonate diffuser with integrated LED driver.

Cat. Ref.	Wattage	Case Lot	MRP
SLE BT 20 G1	20W	10	925
SLE BT 22 G1	22W	10	950
SLE BT 10 IL	10W	10	700

## Maple LED Batten

Aluminium



A trendy wall/ceiling mounted slim LED Batten, with extruded aluminium housing & polycarbonate diffuser with integrated LED driver.

Cat. Ref.	Wattage	Case Lot	MRP
SLE BTN T8 40W	40W	10	2600

## Arrow LED Batten

PC



A trendy wall/ceiling mounted slim LED Batten, with extruded aluminium housing & polycarbonate diffuser with integrated LED driver.

Cat. Ref.	Wattage	Case Lot	MRP
SLE BT 18W ARROW SL	18W	10	800
SLE BT 20W ARROW SL	20W	10	850
SLE BT 22W ARROW SL	22W	10	900
SLE BT 10W ARROW	10W	10	700

## Arrow INV LED Batten

PC



A new generation LED T8 Batten for multipurpose application made from polycarbonate housing & diffuser with integrated LED driver, built-in battery backup for emergency lighting purpose.

Cat. Ref.	Wattage	Case Lot	MRP
SLE BT 18W ARROW INV	18W	10	1800







# Accent Lighting

**Accent lighting** is a type of lighting design terminology which refers to lighting on a particular area or object. It is often used to highlight art or other artefacts. Common types of accent lights include wall sconces or track lighting. The brighter light from the accent lamp creates visual interest in a room.

Some accent lights aren't made to shine on a particular object, but are themselves a piece of art with a self-contained light source. In most cases, accent lighting is used in retail and museum lighting applications.





# Retail Lighting

**Stella Prime**

COB Recessed  
Downlight



Recessed mounted tiltable LED downlighter with COB technology for retail showroom, passages, accent, corridor lighting. Standard product comes with 36deg. beam angle. XX denotes for available CCT: 3K, 4K, 6K.

Cat. Ref.	Wattage	Case Lot	MRP
SLE DLR 3W STELLAR PRIME XX	3W	10	1400
SLE DLR 6W STELLAR PRIME XX	6W	10	1600
SLE DLR 9W STELLAR PRIME XX	9W	10	1900
SLE DLR 12W STELLAR PRIME XX	12W	6	2500
SLE DLR 15W STELLAR PRIME XX	15W	6	2800
SLE DLR 18W STELLAR PRIME XX	18W	6	3400
SLE DLR 24W STELLAR PRIME XX	24W	6	3800
SLE DLR 30W STELLAR PRIME XX	30W	6	4400

**Iris**

COB Recessed  
Swivel Downlight



Recessed mounted tiltable and swivel adjustable LED downlighter with COB technology. Standard product comes with 36deg. beam angle. XX denotes for available CCT: 3K, 4K, 6K.

Cat. Ref.	Wattage	Case Lot	MRP
SLE DLR 20W IRIS XX	20W	4	5700
SLE DLR 30W IRIS XX	30W	4	6400
SLE DLR 40W IRIS XX	40W	4	6600

**Sella**

COB Tracklight



Surface mounted LED track light with modern design. Standard product comes with 36deg. beam angle. XX denotes for available CCT: 3K, 4K, 6K.

Cat. Ref.	Wattage	Case Lot	MRP
SLE DLS 10W SELLA XX	10W	2	5700
SLE DLS 20W SELLA XX	20W	2	7500
SLE DLS 30W SELLA XX	30W	2	8200
SLE DLS 40W SELLA XX	40W	2	9400

Track Light Accessories

Cat. Ref.	Case Lot	MRP
SLE DLS Track 1 mtr	1	2100
SLE DLS Live Endcap	1	1200
SLE DLS Dead End Cap	1	200
T2 I Jointer	1	1200
1.5 mtr Suspension wire Set ( 2 nos )	1	800

**Druzy Gimball**

COB Recessed  
Downlight



Recessed mounted spot light LED downlighter with COB technology. Standard product comes with 36deg. beam angle. XX denotes for available CCT: 3K, 4K, 6K.



Cat. Ref.	Wattage	Case Lot	MRP
SLE DLR 6W DRUZY XX	2X3W	4	7200
SLE DLR 12W DRUZY XX	2X6W	4	7800
SLE DLR 18W DRUZY XX	2X9W	4	8800
SLE DLR 24W DRUZY XX	2X12W	4	9400

**Aster LED**

Trunk Light



Surface / suspended trunk light for retail lighting application. XX denotes for available CCT: 3K, 4K, 6K.



Cat. Ref.	Wattage	Case Lot	MRP
SLE DLS 20W ASTER XX	20W	1	POR
SLE DLS 30W ASTER XX	30W	1	POR







# Industrial **Safety** and Productivity

The colour temperature of LED lighting used in the Industries is typically around 5000 Kelvin's. This temperature is very similar to natural day light and has been found to reduce the amount of melatonin production. This results in increase alertness and reduces fatigue. LED lighting makes the workplace look cleaner, safer and natural.





# Industrial Lighting

**Olive LED**

Wellglass



LED Wellglass with aluminium PDC housing & polycarbonate cover, specially designed for industrial applications. Cradle mounting and LILO also available on request.

Cat. Ref.	Wattage	Case Lot	MRP
SLE WG 30W IP66 OLIVE	30W	4	3700
SLE WG 35W IP66 OLIVE	35W	4	3900
SLE WG 38W IP66 OLIVE	38W	4	4100
SLE WG 40W IP66 OLIVE	40W	4	4300
SLE WG 70W IP66 OLIVE	70W	1	7800
SLE WG 80W IP66 OLIVE	80W	1	9400

**Ozen II LED**

Medium Highbay



High efficiency medium bay luminaire with aluminium PDC housing and toughend glass to ensure IP66. High luminous efficacy upto  $\geq 100$  lm/W with discrete high lumen LED.

Cat. Ref.	Wattage	Case Lot	MRP
SLE MB 60W -OZEN II	60W	1	12200
SLE MB 80W -OZEN II	80W	1	13600
SLE MB 100W -OZEN II	100W	1	14500
SLE MB 120W -OZEN II	120W	1	16900

**Comet Neo-N LED**

Highbay



New Generation LED Highbay comes with aluminium PDC housing and toughend glass to ensure IP66. High luminous efficacy upto  $\geq 100$  lm/W with discrete high lumen LED.

Cat. Ref.	Wattage	Case Lot	MRP
SLE HB 80W COMET NEO-N	80W	1	12700
SLE HB 100W COMET NEO-N	100W	1	13600
SLE HB 120W COMET NEO-N	120W	1	17800
SLE HB 150W COMET NEO-N	150W	1	19100
SLE HB 180W COMET NEO-N	180W	1	22800
SLE HB 200W COMET NEO-N	200W	1	24000
SLE HB 250W COMET NEO-N	250W	1	30700

**Orion-II N LED**

Highbay



New Generation LED Highbay comes with aluminium PDC housing and toughend glass to ensure IP66. High luminous efficacy upto  $\geq 130$  lm/W with discrete high lumen LED.

Cat. Ref.	Wattage	Case Lot	MRP
SLE RHB 80W ORION II-N	80W	1	14200
SLE RHB 100W ORION II-N	100W	1	16000
SLE RHB 120W ORION II-N	120W	1	20500
SLE RHB 150W ORION II-N	150W	1	23100
SLE RHB 180W ORION II-N	180W	1	27500
SLE RHB 200W ORION II-N	200W	1	28300
SLE RHB 250W ORION II-N	250W	1	36600



### Sirius-N LED

Highbay



New Generation LED Highbay comes with aluminium PDC housing and prismatic polycarbonate IP Lens cover to ensure IP66 protection. High luminous efficacy upto  $\geq 150$  lm/W with discrete high lumen LED.

Cat. Ref.	Wattage	Case Lot	MRP
SLE RHB 80W SIRIUS-N	80W	1	24300
SLE RHB 100W SIRIUS-N	100W	1	25700
SLE RHB 120W SIRIUS-N	120W	1	30400
SLE RHB 150W SIRIUS-N	150W	1	31300
SLE RHB 200W SIRIUS-N	200W	1	41200

### Hilios LED

Highbay



New Generation LED Highbay comes with aluminium PDC housing and toughend glass to ensure IP66. High luminous efficacy upto  $\geq 110$  lm/W with discrete high lumen LED.

Cat. Ref.	Wattage	Case Lot	MRP
SLE HB 150W HILIOS	150W	1	24100
SLE HB 180W HILIOS	180 W	1	30500
SLE HB 200W HILIOS	200 W	1	31500

### Neptune Linear LED

Highbay



New Generation LED Highbay comes with aluminium PDC housing and polycarbonate optical cover to ensure IP66 protection. High luminous efficacy upto  $\geq 100$  lm/W with discrete high lumen LED. Also available with 130lm/W efficacy.

Cat. Ref.	Wattage	Case Lot	MRP
SLE HB 100W LH	100W	4	22000
SLE HB 150W LH	150W	4	28500

**Turf I LED**

Weatherproof



IP65 protected, LED weather proof luminaire in 2 feet and 4 feet versions.

Cat. Ref.	Wattage	Case Lot	MRP
SLE WPL 18W	18W	4	7500
SLE WPL 36W	36W	4	7600

**Turf II LED**

Weatherproof



Weatherproof Luminaire suitable for use with single sided T8 LED Tubes. LED Tubes to be ordered separately. Below mentioned price are excluding LED tube.

Cat. Ref.	Wattage	Case Lot	MRP
SLE DJPC 118 LED	1X18W	4	3500
SLE DJPC 218 LED	2X18W	4	4300

**Labino IP65 Batten**



This new generation IP65 protected, LED weather proof batten in 4 feet versions.

Cat. Ref.	Wattage	Case Lot	MRP
SLE BTN 20W IP65	20W	1	2800
SLE BTN 40W IP65	40 W	1	3800

**Lighmet LED Batten**

MS



A revolutionary LED batten made from CRCA sheet steel powder coated housing & highly efficient LEDs for varied application

Cat. Ref.	Wattage	Case Lot	MRP
SLE BT 20 MS	20W	4	7500
SLE BT 40 MS	40W	4	7800

**Lighmet LED Batten**

MS Sensor



A revolutionary LED batten made from CRCA sheet steel powder coated housing & highly efficient LEDs for varied application. This batten comes with PIR sensor.

Cat. Ref.	Wattage	Case Lot	MRP
SLE BTN 20 MS SEN	20W	1	8400
SLE BTN 40 MS SEN	40 W	1	9700

**LED Batten**



Batten pre wired suitable to use with T8 LED Tube. LED tube, to be ordered separately. Below mentioned price is without LED tube

Cat. Ref.	Wattage	Case Lot	MRP
SUB 118 T8 LED	1X18W	16	700
SUB 218 T8 LED	2X18W	16	800

**Corvi Plus LED**

Bulkhead Aluminium



New generation energy saving LED Bulkhead made up of aluminium housing with diffuser.

Cat. Ref.	Wattage	Case Lot	MRP
SLE BLH 10W PLUS	10W	4	2100

**Corvi Neo LED**

Bulkhead PC



New generation energy saving LED Bulkhead made up of Poly carbonate housing with diffuser.

Cat. Ref.	Wattage	Case Lot	MRP
SLE BH 10W	10W	4	1900

**Rentier Cleanroom LED**

Bottom Opening



Bottom opening LED Cleanroom suitable for recessed mounting application with IP65 protection.

Cat. Ref.	Wattage	Case Lot	MRP
SLE CLR BO 36 22	36W	2	16600
SLE CLR BO 45 22	45W	2	17700
SLE CLR BO 60 22	60W	2	19200
SLE CLR BO 80 22	80W	2	19900





# Longitudinal **Uniformity**

The uniformity light means the ratio between minimum Illuminance level to average Illuminance level of a particular surface. It is termed as longitudinal uniformity ratio as it is measured along the line passing through the viewer's position in the middle of the road facing to the traffic flow.







# Street Lighting

# Smart Street Lighting Control System



Urban Administrative Development Authorities play a major role in providing the basic amenities like Street Lighting, Drinking Water, Waste Management, Sewage, Roads etc. to citizens. Over the years, Surya Roshni Ltd. has closely worked with different authorities to accomplish lighting tasks.

It's not the number, but the bond we share with our country, Surya Roshni has installed more than Twenty Lac LED Street Lights across the country & has served the nation by delivering quality products, contributing to substantial energy saving for the country. These energy savings have been complimented with safety as well as more luminaire life with low maintenance, which has been an important parameter of our Smart Street Light Solutions. Surya smart lighting solutions minimize glare, sky glow, clutter and light trespass, to enhance the health of residents. All this is made possible by our high quality NABL accredited Lab where innovations and inventions go hand in hand by our dedicated master minds. Surya's main focus has been quality products at affordable prices, which is in line with the prestigious Made in India campaign.

Surya Roshni is having 2 dedicated plants with world class facilities for production, with stringent quality controls. Surya has been one of the most preferred brand across the country, in the lighting industry due to its excellent product performance, superior aesthetics, low operation cost, durability, reliability and environmental friendliness.

## Smart Street Light For Smart Cities

Street lights is a major source of revenue drain if not maintained properly and also causing a lot of inconvenience to common man. Also streetlights, if left on for a long time, can adversely impact the environment. The solutions to all these problems is Smart Street Lights that are controlled through centralized street lighting management software.

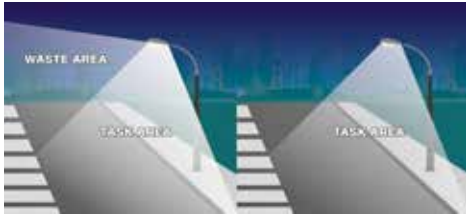
This system helps in :

- Reduced energy costs.
- Reduced maintenance costs.
- Increased lamp life
- Dust to dawn based solution
- Accurate inventory
- Generate various reports on electrical and performance parameter
- Reduced light pollution
- Maintaining public safety
- Remotely controlling individual street light or groups of street lights, through programming.
- Failure reports to local engineers, through alarms on their mobile phones.
- Omitting night patrolling requirement.

## Defining Smart Street Lighting

### 1. By Efficient Optical Control

We all know LED is a miniature light source & by using appropriate optics, as per our requirement, we can reduce Light Pollution, Glare, harm to Environment.



### 2. Group Controlling LED Street Light through CCMS:

This is a communication between Feeder Pillar & Command Centre through GSM/GPRS Technology. We can give command through Feeder Pillar & retrieve data of group of lights through Feeder Pillar to the Server.

The system monitors and records all the following from the Feeder Control Panel at Cluster/ Switching/ Feeder level:

- Voltages at each phase
- Current at each phase
- PF at each phase
- Cumulative metering in KWH
- Metering of KVAH
- Approx. number of operational lights in a circuit
- Approx. number of non-operational lights in a circuit
- Failure of relay
- Status of the incoming supply (power failure)
- High/Low voltage
- Overload on the phases



### 3. Individual LED Street Light Controlling

The Smart Street Lighting Solution involves following entity:

LED Lamps:

A complete unit contains LED Array, LED Driver along with a control unit for RF communication, metering and On/Off lamp.

### 4. Individual Luminary Controller (ILC):

Street lighting controller device that installed on every street light for Individual lamp control, On/Off operation, Fault Detection and Energy Measurement purpose.

### 5. Gateway:

It is a standalone device capable to communicate with

- (1) Wireless street lights over LORA / ZigBee or similar technology
- (2) Lighting management server software over GSM / GPRS / Ethernet / Wi-Fi
- (3) Cluster energy meter over wired RS232. This is integrated within Feeder Panel.

### 6. Cluster Energy Meter:

There is a three/single phase electronic energy meter with inbuilt relay for energy measurement and switch control of a group of luminaries installed downside a feeder. It has RS232 connectivity with Gateway.

### 7. Feeder Panel:

This is the unit to be placed at the feeder level or switching point. Consists of Gateway, Cluster Energy Meter, MCB and Change Over with bypass arrangement.



### 8. Central Monitoring Software:

Web Application for remote management, control, configuration and monitor of all city wide installed clusters and lights.

**Lexon**  
Street Light



LED street light with aluminium PDC housing and toughened glass cover with IP66 protection. Secondary lenses for individual LED for roadways application.

Cat. Ref.	Wattage	Case Lot	MRP
SLE UL 11W IP66 LXN	11W	10	1900
SLE UL 15W IP66 LXN	15W	10	2000
SLE UL 18W IP66 LXN	18W	10	2200
SLE UL 20W IP66 LXN	20W	10	2400
SLE UL 25W IP66 LXN	25W	10	2800

**Lexon**  
Street Light



LED street light with aluminium PDC housing and toughened glass cover with IP66 protection. Secondary lenses for individual LED for roadways application.

Cat. Ref.	Wattage	Case Lot	MRP
SLE UL 30W IP66 LXN	30W	6	3500
SLE UL 36W IP66 LXN	36W	6	4000
SLE UL 40W IP66 LXN	40W	6	5000
SLE UL 45W IP66 LXN	45W	6	6000

**Lexon**  
Street Light



LED street light with aluminium PDC housing and toughened glass cover with IP66 protection. Secondary lenses for individual LED for roadways application.

Cat. Ref.	Wattage	Case Lot	MRP
SLE UL 48W IP66 LXN	48W	4	7000
SLE UL 50W IP66 LXN	50W	4	7500
SLE UL 60W IP66 LXN	60W	4	8000
SLE UL 65W IP66 LXN	65W	4	8500
SLE UL 72W IP66 LXN	72W	4	9000

**Lexon**  
Street Light



LED street light with aluminium PDC housing and toughened glass cover with IP66 protection. Secondary lenses for individual LED for roadways application.

Cat. Ref.	Wattage	Case Lot	MRP
SLE UL 80W IP66 LXN	80W	1	9500
SLE UL 90W IP66 LXN	90W	1	10500
SLE UL 100W IP66 LXN	100W	1	12000
SLE UL 110W IP66 LXN	110W	1	13200
SLE UL 120W IP66 LXN	120W	1	14000

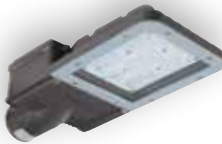
**Pollux**  
Street Light



LED street light with aluminium PDC housing and toughened glass cover with IP66 protection. Secondary lenses used for individual LED for roadways application. For ease of maintenance, the optical chamber is separated from the top-opening driver compartment.

Cat. Ref.	Wattage	Case Lot	MRP
SLE UL 45W IP66 PLX	45W	1	10000
SLE UL 60W IP66 PLX	60W	1	12500

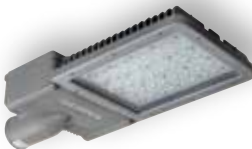
**Pollux**  
Street Light



LED street light with aluminium PDC housing and toughened glass cover with IP66 protection. Secondary lenses used for individual LED for roadways application. For ease of maintenance, the optical chamber is separated from the top-opening driver compartment.

Cat. Ref.	Wattage	Case Lot	MRP
SLE UL 72W IP66 PLX	72W	1	14500
SLE UL 90W IP66 PLX	90W	1	17500
SLE UL 100W IP66 PLX	100W	1	20500
SLE UL 120W IP66 PLX	120W	1	23000

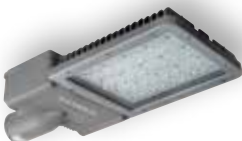
**Pollux**  
Street Light



LED street light with aluminium PDC housing and toughened glass cover with IP66 protection. Secondary lenses used for individual LED for roadways application. For ease of maintenance, the optical chamber is separated from the top-opening driver compartment.

Cat. Ref.	Wattage	Case Lot	MRP
SLE UL 150W IP66 PLX	150W	1	25000
SLE UL 165W IP66 PLX	165W	1	26500
SLE UL 180W IP66 PLX	180W	1	30500

**Pollux**  
Street Light



LED street light with aluminium PDC housing and toughened glass cover with IP66 protection. Secondary lenses used for individual LED for roadways application. For ease of maintenance, the optical chamber is separated from the top-opening driver compartment.

Cat. Ref.	Wattage	Case Lot	MRP
SLE UL 200W IP66 PLX	200W	1	34000
SLE UL 220W IP66 PLX	220W	1	37000
SLE UL 250W IP66 PLX	250W	1	40000

**Pollux XL**  
Street Light



LED street light with system output of >120 lm/W. Aluminium PDC housing with a toughened glass cover that complies with IP66 protection. Secondary lenses used for individual LED for roadways application. For ease of maintenance, the optical chamber is separated from the top-opening driver compartment.

Cat. Ref.	Wattage	Case Lot	MRP
SLE UL 45W IP66 PLX XL	45W	1	12000
SLE UL 60W IP66 PLX XL	60W	1	14000

**Pollux XL**  
Street Light



LED street light with system output of >120 lm/W. Aluminium PDC housing with a toughened glass cover that complies with IP66 protection. Secondary lenses used for individual LED for roadways application. For ease of maintenance, the optical chamber is separated from the top-opening driver compartment.

Cat. Ref.	Wattage	Case Lot	MRP
SLE UL 72W IP66 PLX XL	72W	1	16000
SLE UL 90W IP66 PLX XL	90W	1	19500
SLE UL 100W IP66 PLX XL	100W	1	23000
SLE UL 120W IP66 PLX XL	120W	1	25500

**Pollux XL**  
Street Light



LED street light with system output of >120 lm/W. Aluminium PDC housing with a toughened glass cover that complies with IP66 protection. Secondary lenses used for individual LED for roadways application. For ease of maintenance, the optical chamber is separated from the top-opening driver compartment.

Cat. Ref.	Wattage	Case Lot	MRP
SLE UL 150W IP66 PLX XL	150W	1	27500
SLE UL 165W IP66 PLX XL	165W	1	30000
SLE UL 180W IP66 PLX XL	180W	1	34000

**Pollux XL**  
Street Light



LED street light with system output of >120 lm/W. Aluminium PDC housing with a toughened glass cover that complies with IP66 protection. Secondary lenses used for individual LED for roadways application. For ease of maintenance, the optical chamber is separated from the top-opening driver compartment.

Cat. Ref.	Wattage	Case Lot	MRP
SLE UL 200W IP66 PLX XL	200W	1	38000
SLE UL 220W IP66 PLX XL	220W	1	42000
SLE UL 250W IP66 PLX XL	250W	1	45000



**Newgen**  
Street Light



LED street light with system output of >110 lm/W. Aluminium PDC housing with integrated polycarbonate lens cover that complies with IP66 protection. For ease of maintenance, the optical chamber is separated from the top-opening driver compartment.



Cat. Ref.	Wattage	Case Lot	MRP
SLE UL 15W IP66 NGN	15W	6	2800
SLE UL 18W IP66 NGN	18W	6	2900
SLE UL 20W IP66 NGN	20W	6	3000
SLE UL 25W IP66 NGN	25W	6	3300

**Newgen**  
Street Light



LED street light with system output of >110 lm/W. Aluminium PDC housing with integrated polycarbonate lens cover that complies with IP66 protection. For ease of maintenance, the optical chamber is separated from the top-opening driver compartment.



Cat. Ref.	Wattage	Case Lot	MRP
SLE UL 30W IP66 NGN	30W	6	4000
SLE UL 36W IP66 NGN	36W	6	4800
SLE UL 40W IP66 NGN	40W	6	6000

**Newgen**  
Street Light



LED street light with system output of >110 lm/W. Aluminium PDC housing with integrated polycarbonate lens cover that complies with IP66 protection. For ease of maintenance, the optical chamber is separated from the top-opening driver compartment.



Cat. Ref.	Wattage	Case Lot	MRP
SLE UL 45W IP66 NGN	45W	6	7000
SLE UL 48W IP66 NGN	48W	6	7400

**Newgen**  
Street Light



LED street light with system output of >110 lm/W. Aluminium PDC housing with integrated polycarbonate lens cover that complies with IP66 protection. For ease of maintenance, the optical chamber is separated from the top-opening driver compartment.



Cat. Ref.	Wattage	Case Lot	MRP
SLE UL 50W IP66 NGN	50W	4	7800
SLE UL 60W IP66 NGN	60W	4	9000
SLE UL 65W IP66 NGN	65W	4	9500
SLE UL 70W IP66 NGN	70W	4	10000
SLE UL 72W IP66 NGN	72W	4	10500
SLE UL 75W IP66 NGN	75W	4	11000
SLE UL 80W IP66 NGN	80W	4	12500

**Newgen**  
Street Light



LED street light with system output of >110 lm/W. Aluminium PDC housing with integrated lens cover that complies with IP66 protection. For ease of maintenance, the optical chamber is separated from the top-opening driver compartment.

Cat. Ref.	Wattage	Case Lot	MRP
SLE UL 90W IP66 NGN	90W	2	13000
SLE UL 100W IP66 NGN	100W	2	14000

**Newgen**  
Street Light



LED street light with system output of >110 lm/W. Aluminium PDC housing with integrated lens cover that complies with IP66 protection. For ease of maintenance, the optical chamber is separated from the top-opening driver compartment.

Cat. Ref.	Wattage	Case Lot	MRP
SLE UL 110W IP66 NGN	110W	2	15000
SLE UL 120W IP66 NGN	120W	2	16000

**Alpha Plus**  
Street Light



LED street light with system output of >130 lm/W. Aluminium PDC housing with integrated lens cover that complies with IP66 protection. For ease of maintenance, the optical chamber is separated from the top-opening driver compartment. Note : Customization like higher lm/W, CCT Dimming, Smart street light versions available on request.

Cat. Ref.	Wattage	Case Lot	MRP
SLE UL 200W IP66 IP66 ALPHA PLUS	200W	1	41000
SLE UL 220W IP66 IP66 ALPHA PLUS	220W	1	43000
SLE UL 250W IP66 IP66 ALPHA PLUS	250W	1	48750

**NewGen INV**  
Inverter Street Light



"LED street light with housing made from Aluminium PDC, top maintainable type with Integrated Lens cover with IP66 protection, with inbuilt battery back up and intelligent circuitry for autonomous operation."

Cat. Ref.	Wattage	Case Lot	MRP
SLE UL 30W IP66 NGN INV	30W	4	10000
SLE UL 45W IP66 NGN INV	45W	4	12000
SLE UL 60W IP66 NGN INV	60W	4	15000



Ahmedabad Railway Station  
Lighting Project Completed By Surya



# Vertical Illuminance ( $E_v$ )

In any particular sporting event players and ball can be understood as vertical surfaces. This means that we need to keep vertical illuminance. We should generally measure vertical illuminance at a height of 1.5 meters which corresponds approximately to the faces of the players.

At the time of sport lighting design for televised lighting classes ratio between the average vertical and horizontal illuminance should match as closely as possible, but shouldn't exceed a 0.5 to 2 ratio. That means horizontal illuminance shouldn't be less than half of the vertical illuminance or greater than twice of the vertical illuminance.







# Flood Lighting

**LMS Neo**  
Flood Light



LMS Neo is a Compact LED Floodlight with system luminous efficacy of 100lm/W. Housing made of aluminium PDC with toughned glass optical cover to ensure IP66 protection.

Cat. Ref.	Wattage	Case Lot	MRP
SLE FL 80W IP66 LMS NEO	80W	1	13900
SLE FL 100W IP66 LMS NEO	100W	1	14600
SLE FL 120W IP66 LMS NEO	120W	1	15400

**Livia**  
Flood Light



Livia is a best in class LED Floodlight with system luminous efficacy of 110lm/W. Housing made of aluminium PDC with toughned glass optical cover to ensure IP66 protection.

Cat. Ref.	Wattage	Case Lot	MRP
SLE FL 80W IP66 LIVIA	80W	1	14000
SLE FL 100W IP66 LIVIA	100W	1	15000
SLE FL 120W IP66 LIVIA	120W	1	17000
SLE FL 150W IP66 LIVIA	150W	1	19200
SLE FL 180W IP66 LIVIA	180W	1	22900
SLE FL 200W IP66 LIVIA	200W	1	25600
SLE FL 250W IP66 LIVIA	250W	1	34400
SLE FL 300W IP66 LIVIA	300W	1	39200
SLE FL 350W IP66 LIVIA	350W	1	43900
SLE FL 400W IP66 LIVIA	400W	1	46300

**Zencelo**  
Flood Light



Zencelo is a higher wattage LED Floodlight with system luminous efficacy of 110lm/W. Housing made of aluminium PDC with toughned glass optical cover to ensure IP66 protection.

Cat. Ref.	Wattage	Case Lot	MRP
SLE FL 450W IP66 ZENCELO	450W	1	58200
SLE FL 500W IP66 ZENCELO	500W	1	61000
SLE FL 600W IP66 ZENCELO	600W	1	71100

**Hilios**  
Flood Light



Hilios is a best in class LED Floodlight with system luminous efficacy of 110lm/W, Housing made of aluminium PDC with toughened glass optical cover to ensure IP66 protection.

Cat. Ref.	Wattage	Case Lot	MRP
SLE FL 80W IP66 HILIOS	80W	1	12600
SLE FL 100W IP66 HILIOS	100W	1	14200
SLE FL 120W IP66 HILIOS	120W	1	15900
SLE FL 150W IP66 HILIOS	150W	1	20400
SLE FL 180W IP66 HILIOS	180W	1	24000
SLE FL 200W IP66 HILIOS	200W	1	26000
SLE FL 250W IP66 HILIOS	250W	1	35600
SLE FL 300W IP66 HILIOS	300W	1	40100
SLE FL 350W IP66 HILIOS	350W	1	45300

**Hilios Pro**  
Flood Light



Hilios Pro is a next generation LED flood light with aluminium PDC housing and Polycarbonate IP Lens cover to ensure IP66 protection. system luminous efficacy of 130lm/W.

Cat. Ref.	Wattage	Case Lot	MRP
SLE FL 150W IP66 HILIOS PRO	150W	1	23300
SLE FL 180W IP66 HILIOS PRO	180W	1	28500
SLE FL 200W IP66 HILIOS PRO	200W	1	29800

**Livia Pro**  
Flood Light



Livia Pro is a next generation LED flood light with aluminium PDC housing and Polycarbonate IP Lens cover to ensure IP66 protection. system luminous efficacy of 120lm/W. 130lm/W is also available on request.

Cat. Ref.	Wattage	Case Lot	MRP
SLE FL 150W IP66 LIVIA PRO	150W	1	18600
SLE FL 180W IP66 LIVIA PRO	180W	1	20700
SLE FL 200W IP66 LIVIA PRO	200W	1	22500
SLE FL 250W IP66 LIVIA PRO	250W	1	30800
SLE FL 300W IP66 LIVIA PRO	300W	1	34200
SLE FL 350W IP66 LIVIA PRO	350W	1	39200
SLE FL 400W IP66 LIVIA PRO	400W	1	42700

**Neptune Tunnel**  
Light



This TUNNEL Light comes with system luminous efficacy of 120lm/W, protected to IP66.

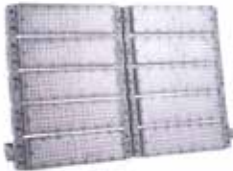


Cat. Ref.	Wattage	Case Lot	MRP
SLE TL 20 EX G1	20W	1	POR
SLE TL 40 EX G1	40W	1	POR

**Magna**  
Flood Light



Magna is a next generation LED sports flood light with aluminium PDC housing and Polycarbonate IP Lens cover to ensure IP66 protection. system luminous efficacy of 120lm/W. 130lm/W is also available on request.



Cat. Ref.	Wattage	Case Lot	MRP
SLE FL 1000W IP66 MAGNA	1000W	1	POR
SLE FL 1200W IP66 MAGNA	1200W	1	POR

**Magna Plus**  
Flood Light



Magna Plus is a next generation LED sports flood light with aluminium PDC housing and Polycarbonate IP Lens cover to ensure IP66 protection. system luminous efficacy of 135lm/W as standard. This floodlight has a different LENS options specially for sport light application



Cat. Ref.	Wattage	Case Lot	MRP
SLE FL 800W IP66 MAGNA PLUS G4	800W	1	POR
SLE FL 1000W IP66 MAGNA PLUS G4	1000W	1	POR
SLE FL 1200W IP66 MAGNA PLUS G4	1200W	1	POR



# Sangam University Stadium Atoon - Rajasthan

Lighting Project Completed By Surya

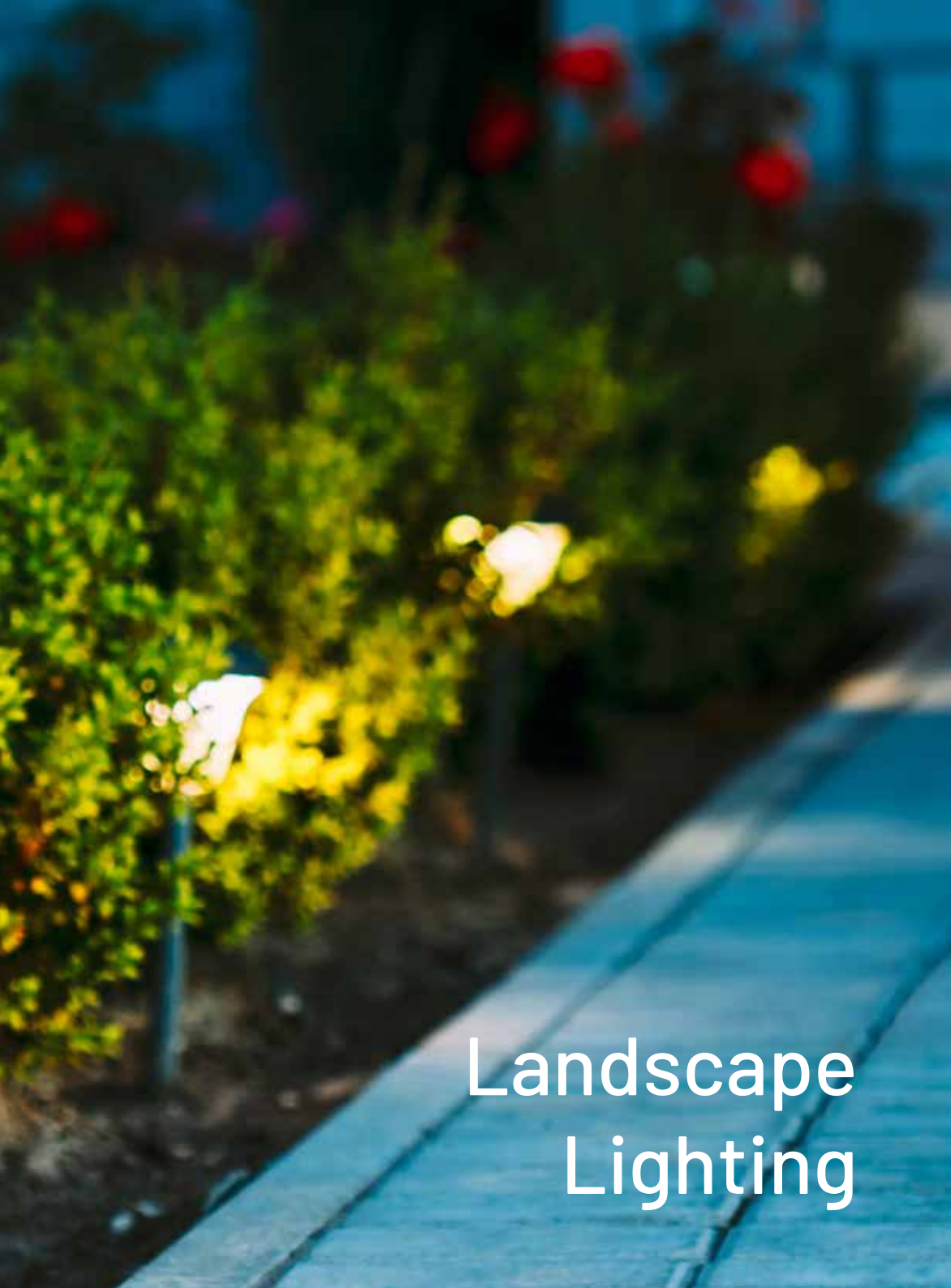


SURYA









# Landscape Lighting

**E-Topp**  
Light



E-Topp LED post top lantern with spun aluminium canopy and die cast aluminium spigot offers symetric light distribution with clear acrylic diffuser.

Cat. Ref.	Wattage	Case Lot	MRP
SLE PT 30W ETTP	30W	1	9000
SLE PT 36W ETTP	36W	1	9500
SLE PT 40W ETTP	40W	1	10000

**E-Topp**  
Light



E-Topp LED post top lantern with spun aluminium canopy and die cast aluminium spigot offers symetric light distribution with clear acrylic diffuser.

Cat. Ref.	Wattage	Case Lot	MRP
SLE PT 50W-ETTP	50W	1	15000
SLE PT 60W-ETTP	60W	1	18000
SLE PT 70W ETTP	70W	1	20000

**Vega**  
Light



Vega is decorative LED post top suspended lantern range made up of spun aluminium canopy with die-cast aluminium spigot. Fitted with glare free optically designed Prismatic diffuser and high efficiency LEDs.

Cat. Ref.	Wattage	Case Lot	MRP
SLE PT 30W-VEGA	30W	1	48000
SLE PT 30W-VEGA TM	30W	1	40750
SLE PT 60W-VEGA TM	60W	1	47000

**Hary**  
Light



HARY is heritage post top lantern made up of die-cast aluminium housing with glare free optically designed PC diffuser.

Cat. Ref.	Wattage	Case Lot	MRP
SLE PT 30W-HARY	30W	1	35000

Rigel



RIGEL post top lantern is made up of die-cast aluminium housing offer glare free symetric distribution with PC diffuser.

Cat. Ref.	Wattage	Case Lot	MRP
SLE PT 30W RIGEL	30W	1	30000
SLE PT 40W RIGEL	40W	1	35000
SLE PT 50W RIGEL	50W	1	38000
SLE PT 60W RIGEL	60W	1	50000

Navi



NAVI LED post top lantern housing made up of engineering plastic with top cover in aluminium with low glare PC diffuser.

Cat. Ref.	Wattage	Case Lot	MRP
SLE PT 30W-NAVI	30W	1	20000
SLE PT 40W-NAVI	40W	1	22000
SLE PT 50W-NAVI	50W	1	22000
SLE PT 60W-NAVI	60W	1	30000

Hampshire



HAMPSHIRE LED post top lantern housing is made up of diecast aluminium with top cover in aluminium spiget with low glare PC diffuser.

Cat. Ref.	Wattage	Case Lot	MRP
SLE PT 40W-HAMPSHIRE	40W	1	42000
SLE PT 60W-HAMPSHIRE	60W	1	46000
SLE PT 90W-HAMPSHIRE	90W	1	52000

Empire



EMPIRE LED post top lantern housing is made up of cast aluminium with top cover in aluminium diecast spiget.

Cat. Ref.	Wattage	Case Lot	MRP
SLE PT 35W-EMPIRE	35W	1	38000
SLE PT 70W-EMPIRE	70W	1	51000

**Glaze NX LED**

Bollard



Glaze LED Bollard fitted with low glare diffuser

Cat. Ref.	Wattage	Case Lot	MRP
SLE BL 10W-GLZ600 NX	10W	1	8500
SLE BL 10W-GLZ800 NX	10W	1	9000
SLE BL 10W-GLZ1000 NX	10W	1	9500

**Flare NX LED**

Bollard



Flare LED Bollard fitted with low glare diffuser.

Cat. Ref.	Wattage	Case Lot	MRP
SLE BL 10W-FLR650 NX	10W	1	8500
SLE BL 10W-FLR1000 NX	10W	1	9500

**Blink LED**

Bollard



Blink LED Bollard made up of extruded aluminium with PC diffuser.

Cat. Ref.	Wattage	Case Lot	MRP
SLE BL 9W-BLK800	9W	1	10800
SLE BL 12W-BLK800	12W	1	12000

**Lyra LED**

Bollard



Lyra LED Bollard made up of extruded aluminium with PC diffuser.

Cat. Ref.	Wattage	Case Lot	MRP
SLE BL 10W IP65 LYR 1000	10W	1	12000

### Flash LED

Bollard



Flash LED Bollard made up of MS pipe with PC diffuser.

Cat. Ref.	Wattage	Case Lot	MRP
SLE BL 10W IP65 FLS 1000	10W	1	12500

### Victor LED

Bollard



VICTOR LED Bollard made up of cast embleshments with PC diffuser.

Cat. Ref.	Wattage	Case Lot	MRP
SLE BL 10W IP65 VCT 1000	10W	1	28000

### Oxford LED

Bollard



OXFORD LED Bollard made up of cast embleshments with PC diffuser.

Cat. Ref.	Wattage	Case Lot	MRP
SLE BL 18W IP65 OCF 1000	18W	1	27000

### Hary LED

Bollard



HARY LED Bollard made up of cast embleshments with PC diffuser.

Cat. Ref.	Wattage	Case Lot	MRP
SLE BL 9W IP65 HARY 750	9W	1	19000
SLE BL 12W IP65 HARY 750	12W	1	20000

**Mallow LED**

Bush Light



MALLOW is LED Bush Light in die-cast aluminium housing with high quality toughened glass diffuser

Cat. Ref.	Wattage	Case Lot	MRP
SLE BSL 9W MALLOW	9W	4	7000
SLE BSL 15W MALLOW	15W	4	8000
SLE BSL 25W MALLOW	25W	4	10000

**Mallow LED**

Spike Light



MALLOW is LED Spike Light in die-cast aluminium housing with high quality toughened glass diffuser

Cat. Ref.	Wattage	Case Lot	MRP
SLE SPL 9W MALLOW	9W	4	7000
SLE SPL 15W MALLOW	15W	4	8000
SLE SPL 25W MALLOW	25W	4	10000

**Diya LED Step**

Light



LED Step Light in powder coated diecast aluminium housing in IP65 protection.

Cat. Ref.	Wattage	Case Lot	MRP
SLE STL 5W	5W	4	4500

**Hexa Up Down LED**

Light



LED Up Down Light in die-cast aluminium housing with toughened glass cover

Cat. Ref.	Wattage	Case Lot	MRP
SLE WL 10W UP-DOWN	10W	4	7000
SLE WL 15W UP-DOWN	15W	4	8000
SLE WL 25W UP-DOWN	25W	4	10000



## Decorative Poles

Complementing options of heritage, contemporary lamp post with multiple colour PU paint options



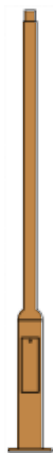
Alex



Alice



Victor



Metis



Crown

For more info please contact our sales representative



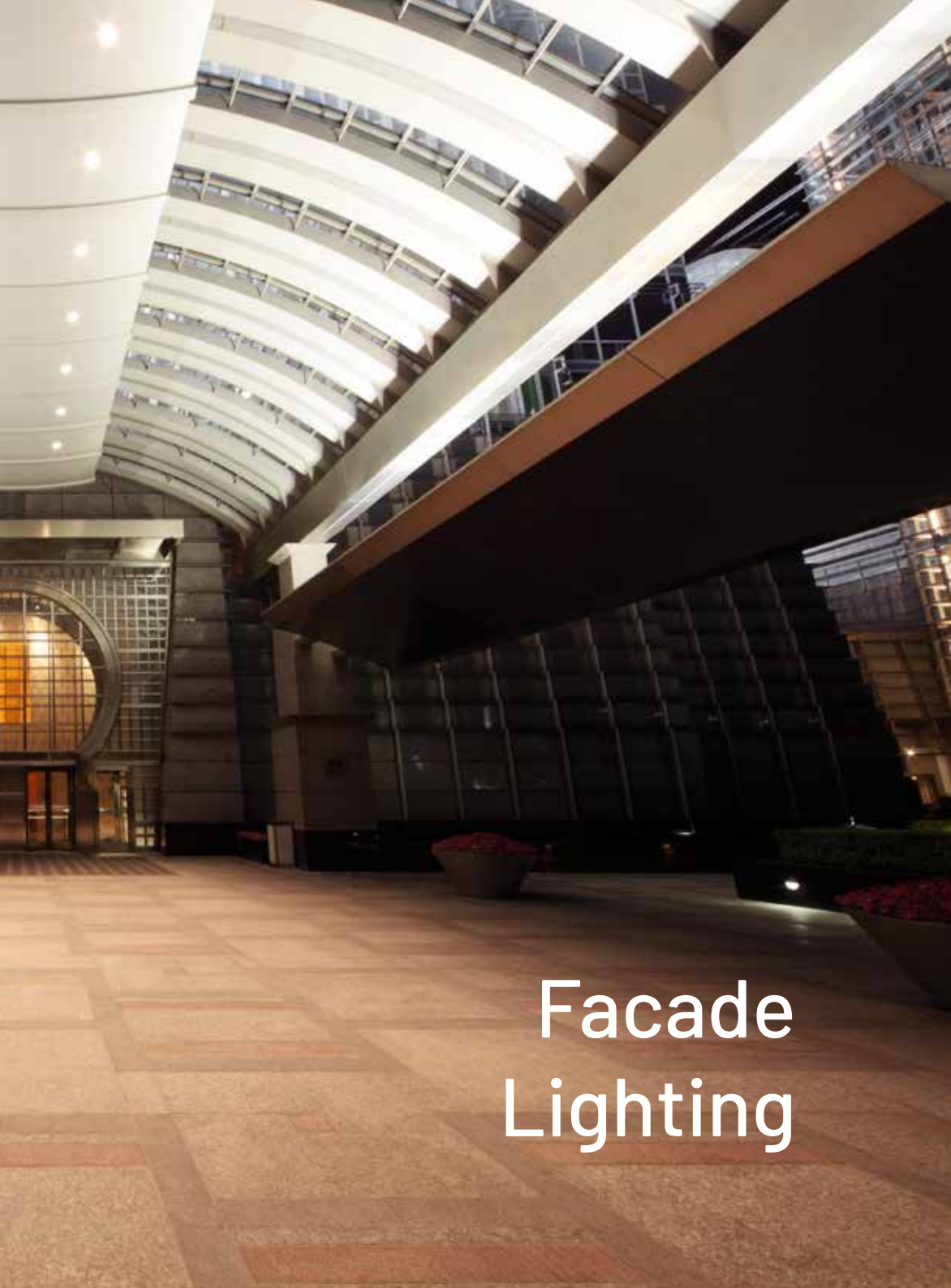


# Volumetric Lighting

**Volumetric lighting** refers to the type of lighting distribution that creates the 3D perception where orientation or effect that increases, enhances or magnifies the sense of volume in a given space, context or application.

This technique can be seen if the light passes through fog or smoke the perception that the shape of an actual three-dimensional space.





# Facade Lighting

**Linear LED**

Light



Mono Color options 3K/4K/5K, Red, Green, Amber, BLUE, RGB / RGBA Linears with On/Off or DMX control available upon request.

Cat. Ref.	MRP
SLE BLSM 18W IP66 RGBW LINEAR	POR
SLE BLSM 24W IP66 RGBW LINEAR	POR
SLE BLSM 36W IP66 RGBW LINEAR	POR
SLE BLSM 48W IP66 RGBW LINEAR	POR

**Linear LED**

Series



Mono Color options 3K/4K/5K, Red, Green, Amber, BLUE, RGB / RGBA Linears with On/Off or DMX control available upon request.

Cat. Ref.	MRP
SLE BLSM 60W IP66 RGBW LINEAR	POR
SLE BLSM 72W IP66 RGBW LINEAR	POR
SLE BLSM 80W IP66 RGBW LINEAR	POR

**SFL LED Flood**

Series



Mono Color options 3K/4K/5K, Red, Green, Amber, BLUE, RGB / RGBA Linears with On/Off or DMX control available upon request.

Cat. Ref.	MRP
SLE BLSM 18W IP66 RGBW SFL	POR
SLE BLSM 24W IP66 RGBW SFL	POR



Cat. Ref.	MRP
SLE BLSM 30W IP66 RGBW SFL	POR
SLE BLSM 36W IP66 RGBW SFL	POR
SLE BLSM 45W IP66 RGBW SFL	POR
SLE BLSM 54W IP66 RGBW SFL	POR



Cat. Ref.	MRP
SLE BLSM 72W IP66 RGBW SFL	POR
SLE BLSM 90W IP66 RGBW SFL	POR





Cat. Ref.	MRP
SLE BLSM 100W IP66 RGBW SFL	POR
SLE BLSM 120W IP66 RGBW SFL	POR



Cat. Ref.	MRP
SLE BLSM 100W IP66 RGBW SFL	POR
SLE BLSM 120W IP66 RGBW SFL	POR

### RFL LED Flood

Series

Mono Color options 3K/4K/5K, Red, Green, Amber, BLUE, RGB / RGBA Linears with On/Off or DMX control available upon request.



Cat. Ref.	MRP
SLE BLSM 18W IP66 RGBW RFL	POR
SLE BLSM 24W IP66 RGBW RFL	POR



Cat. Ref.	MRP
SLE BLSM 30W IP66 RGBW RFL	POR
SLE BLSM 36W IP66 RGBW RFL	POR
SLE BLSM 45W IP66 RGBW RFL	POR
SLE BLSM 54W IP66 RGBW RFL	POR



Cat. Ref.	MRP
SLE BLSM 72W IP66 RGBW RFL	POR
SLE BLSM 90W IP66 RGBW RFL	POR
SLE BLSM 100W IP66 RGBW RFL	POR
SLE BLSM 120W IP66 RGBW RFL	POR

**RFL LED Flood**

Series



Mono Color options 3K/4K/5K, Red, Green, Amber, BLUE, RGB / RGBA Linears with On/Off or DMX control available upon request.

Cat. Ref.	MRP
SLE BLSM 72W IP66 RGBW RFL	POR
SLE BLSM 90W IP66 RGBW RFL	POR
SLE BLSM 100W IP66 RGBW RFL	POR
SLE BLSM 120W IP66 RGBW RFL	POR

**Unicorn**

Series



Cat. Ref.	MRP
SLE BLSM 380W IP66 RGBW	POR
SLE BLSM 450W IP66 RGBW	POR
SLE BLSM 500W IP66 RGBW	POR
SLE BLSM 650W IP66 RGBW	POR
SLE BLSM 780W IP66 RGBW	POR

**Pixel**

Series



Cat. Ref.	MRP
SLE BLSM DOT 10 RGB/RGBW T1	POR
SLE BLSM DOT 15 RGB/RGBW T1	POR
SLE BLSM DOT 20 RGB/RGBW T1	POR
SLE BLSM DOT 30 RGB/RGBW T1	POR

Cat. Ref.	MRP
SLE BLSM DOT 10 RGB/RGBW T2	POR
SLE BLSM DOT 15 RGB/RGBW T2	POR
SLE BLSM DOT 20 RGB/RGBW T2	POR
SLE BLSM DOT 30 RGB/RGBW T2	POR

**Flexible**

Strip



Cat. Ref.	MRP
SLE BLSM 10W IP68 STRIP	POR
SLE BLSM 15W IP68 STRIP	POR
SLE BLSM 20W IP68 STRIP	POR

## DMX Accessories



Third Party equipments may be used for system configurations.

Cat. Ref.	MRP
DMX CONTROLLER 1 UNIVERSE	POR
DMX CONTROLLER 2 UNIVERSE	POR



Cat. Ref.	MRP
DMX SPLITTER 1-TO - 4	POR
DMX SPLITTER 1-TO - 8	POR



Cat. Ref.	MRP
DMX CABLE	POR



Cat. Ref.	MRP
DMX CONNECTOR IP68	POR

For system design and further enquiry, contact our local representatives.



Solar  
Lighting

## Solar All-In-One

System



System includes LED luminaire, lithium ferrous phopshate battery, Mono crystalline panel. PIR inbuilt for motion detection where mentioned.

- 1H 25%, 2H 50%, 3H 100%, 4H 50%, 5H onwards 25% till switch off
- Luminaire has time based dimming
- 1 night backup in full charged battery
- Pole excluded. Kindly check pole OD before installation
- Bluetooth and hybrid option available at extra cost
- Any customization will be at extra cost

Cat Ref.	Configuration	MRP
SSLE SISH 12W HT3 35WP 12AH LFP W5 SOLAR	12W@150lm/W, 35Wp, 12AH, NO PIR	33,000
SSLE SISH 12W T3 35WP 12AH LFP W5 SOLAR	12W@125lm/W/35Wp/12AH, NO PIR	30,000
SSLE SISH 15W T3 40WP 18AH LFP W5 SOLAR	15W@125 lm/W ,40Wp, 18AH, NO PIR	40,000
SSLE SISH 20W HD2 60WP 24AH LFP W5 SOLAR	20W@150 lm/W, 60Wp, 24 AH, PIR	65,000
SSLE SISH 20W D2 60WP 24AH LFP W5 SOLAR	20W@125 lm/W, 60Wp, 24 AH, PIR	62,000
SSLE SISH 20W T3 50WP 18AH LFP W5 SOLAR	20W@125 lm/W, 50Wp, 18AH, NO PIR	52,000
SSLE SISH 20W HD2 50WP 18AH LFP HYB W5 SOLAR	20W@150 lm/W, 50Wp,18 AH, PIR, HYB	65,000
SSLE SISH 25W HD2 60WP 30AH LFP W5 SOLAR	25W@150 lm/W, 60Wp, 30 AH, PIR	67,000
SSLE SISH 25W D2 60WP 30AH LFP W5 SOLAR	25W @ 125 lm/W, 60Wp, 30 AH, PIR	66,000
SSLE SISH 25W T3 50WP 24AH LFP W5 SOLAR	25W @ 125 lm/W, 50Wp, 24AH, no PIR	58,000
SSLE SISH 25W HD2 50WP 24AH LFP HYB W5 SOLAR	25W @ 150 lm/W, 50Wp, 24AH, PIR, HYB	70,000
SSLE SISH 30W HD2 75WP 30AH LFP W5 SOLAR	30W @ 150lm/W, 75Wp,30AH, PIR	73,000
SSLE SISH 30W D2 75WP 30AH LFP W5 SOLAR	30W @ 125lm/W, 75Wp,30AH, PIR	72,000
SSLE SISH 30W T3 60WP 24AH LFP W5 SOLAR	30W @ 125 lm/W, 60Wp, 24AH, No PIR	60,000
SSLE SISH 30W HD2 60WP 24AH LFP HYB W5 SOLAR	30W @ 150lm/W, 60Wp, 24AH, PIR, HYB	75,000
SSLE SISH 40W HD2 100WP 36AH LFP W5 SOLAR	40Wp @ 150lm/W, 100Wp,36AH, PIR	95,000
SSLE SISH 40W D2 100WP 36AH LFP W5 SOLAR	40Wp @ 125lm/W, 100Wp,36AH, PIR	93,000
SSLE SISH 40W T3 75WP 30AH LFP W5 SOLAR	40Wp@125 lm/W, 75WP, 30AH, NO PIR	70,000
SSLE SISH 40W HD2 75WP 30AH LFP HYB W5 SOLAR	40Wp @ 150lm/W, 75Wp, 30AH, PIR, HYB	85,000
SSLE SISH 60W HD2 125WP 54AH LFP W5 SOLAR	60W @ 150 lm/W, 125Wp, 54AH, PIR	1,25,000
SSLE SISH 60W D2 125WP 54AH LFP W5 SOLAR	60W@125lm/W, 125Wp,54AH, PIR	1,20,000
SSLE SISH 60W T3 100WP 42AH LFP W5 SOLAR	60W@125 lm/W, 100WP, 42AH, NO PIR	1,00,000
SSLE SISH 60W HD2 100WP 42AH LFP HYB W5 SOLAR	60W @ 150 lm/W, 100Wp, 42AH, PIR, HYB	1,10,000
SSLE SISH 70W HD2 150WP 60AH LFP W5 SOLAR	70W @ 150 lm/W, 150Wp, 60AH, PIR	1,35,000
SSLE SISH 70W D2 150WP 60AH LFP W5 SOLAR	70W @ 125 lm/W, 150Wp, 60AH, PIR	1,30,000
SSLE SISH 70W T3 100WP 48AH LFP W5 SOLAR	70W @ 125 lm/W, 100Wp, 48AH, NO PIR	1,10,000
SSLE SISH 70W HD2 100WP 48AH LFP HYB W5 SOLAR	70W @ 150 lm/W, 125Wp, 48AH, PIR, HYB	1,20,000

**Solar All-In-One**

System



System includes LED luminaire, lithium ferrous phopshate battery, Mono crystalline panel. PIR inbuilt for motion detection where mentioned.

**Time based dimming profile**

- 1H 25%, 2H 50%, 3H 100%, 4H 50%, 5H onwards 25% till switchoff.
- 1 night backup in full charged battery
- Pole excluded. Kindly check pole OD before installation.
- Bluetooth and hybrid option available at extra cost.
- Any customization will be at extra cost.

Cat Ref.	Configuration	MRP
SSLE AIO 12W HT3 35WP 12AH LFP W5 SOLAR	12W@150lm/W,35Wp, 12AH, NO PIR	35,000.00
SSLE AIO 12W T3 35WP 12AH LFP W5 SOLAR	12W @ 125lm/W,35Wp,12AH, NO PIR	37,000.00
SSLE AIO 15W T3 40WP 18AH LFP W5 SOLAR	15W@125 lm/W ,40Wp,18AH , NO PIR	45,000.00
SSLE AIO 20W HD2 60WP 24AH LFP W5 SOLAR	20W @ 150 lm/W,60Wp,24 AH, PIR	70,000.00
SSLE AIO 20W D2 60WP 24AH LFP W5 SOLAR	20W @ 125 lm/W,60Wp,24 AH, PIR	67,000.00
SSLE AIO 20W HT3 50WP 18AH LFP W5 SOLAR	20W @ 125 lm/W,50Wp, 18AH, no PIR	57,000.00
SSLE AIO 20W HD2 50WP 18AH LFP HYB W5 SOLAR	20W @ 150 lm/W,50Wp, 18 AH, PIR, HYB	70,000.00
SSLE AIO 25W HD2 60WP 30AH LFP W5 SOLAR	25W @ 150 lm/W,60Wp,30 AH, PIR	72,000.00
SSLE AIO 25W D2 60WP 30AH LFP W5 SOLAR	25W @ 125 lm/W,60Wp,30 AH, PIR	71,000.00
SSLE AIO 25W HT3 50WP 24AH LFP W5 SOLAR	25W @ 125 lm/W,50Wp, 24AH, no PIR	63,000.00
SSLE AIO 25W HD2 50WP 24AH LFP HYB W5 SOLAR	25W @ 150 lm/W,50Wp, 24AH, PIR, HYB	75,000.00
SSLE AIO 30W HD2 75WP 30AH LFP W5 SOLAR	30W @ 150lm/W,75Wp,30AH , PIR	78,000.00
SSLE AIO 30W D2 75WP 30AH LFP W5 SOLAR	30W @ 125lm/W,75Wp,30AH , PIR	77,000.00
SSLE AIO 30W T3 60WP 24AH LFP W5 SOLAR	30W @ 125 lm/W, 60Wp, 24AH , No PIR	65,000.00
SSLE AIO 30W HD2 60WP 24AH LFP HYB W5 SOLAR	30W @ 150lm/W,60Wp,24AH , PIR, HYB	80,000.00
SSLE AIO 40W HD2 100WP 36AH LFP W5 SOLAR	40Wp @ 150lm/W,100Wp,36AH, PIR	1,00,000.00
SSLE AIO 40W D2 100WP 36AH LFP W5 SOLAR	40Wp @ 125lm/W,100Wp,36AH, PIR	98,000.00
SSLE AIO 40W T3 75WP 30AH LFP W5 SOLAR	40Wp@125 lm/W, 75WP, 30AH , NO PIR	75,000.00
SSLE AIO 40W HD2 75WP 30AH LFP HYB W5 SOLAR	40Wp @ 150lm/W,75Wp,30AH, PIR, HYB	90,000.00
SSLE AIO 60W HD2 125WP 54AH LFP W5 SOLAR	60W @ 150 lm/W , 125Wp, 54AH , PIR	1,30,000.00
SSLE AIO 60W D2 125WP 54AH LFP W5 SOLAR	60W@125lm/W,125Wp,54AH , PIR	1,25,000.00
SSLE AIO 60W T3 100WP 42AH LFP W5 SOLAR	60W@125 lm/W, 100WP, 42AH , NO PIR	1,05,000.00
SSLE AIO 60W HD2 100WP 42AH LFP HYB W5 SOLAR	60W @ 150 lm/W , 100Wp, 42AH , PIR, HYB	1,15,000.00
SSLE AIO 70W HD2 150WP 60AH LFP W5 SOLAR	70W @ 150 lm/W,150Wp, 60AH , PIR	1,40,000.00
SSLE AIO 70W D2 150WP 60AH LFP W5 SOLAR	70W @ 125 lm/W,150Wp, 60AH , PIR	1,35,000.00
SSLE AIO 70W T3 100WP 48AH LFP W5 SOLAR	70W @ 125 lm/W, 100Wp, 48AH , NO PIR	1,15,000.00
SSLE AIO 70W HD2 100WP 48AH LFP HYB W5 SOLAR	70W @ 150 lm/W,100Wp, 48AH , PIR, HYB	1,25,000.00



## Solar All-In-One With CCTV

System



- System includes CCTV, LED luminaire, lithium ferrous phopshate battery, Mono crystalline panel.
- LFP-Lithium Ferrous Phosphate Battery, PIR (motion sensor), Time based Dimming, MPPT charge controller available.
- Refer TDS
- Pole excluded.
- Other option without PIR is also available with time based dimming at extra cost.

Cat Ref.	luminaire (W)	MRP
SSLE A10 15W CCTV SOLAR	15W	1,50,000.00
SSLE A10 30W CCTV SOLAR	30W	2,00,000.00

## Solar Semi Integrated

System



- System includes LED luminaire, lithium ferrous phopshate battery, poly crystalline panel, luminaire arm, module mounting structure, 6m Tubular pole Bluetooth , Hybrid or any Customization available on request at extra cost.
- Dim to 50% after 4 hrs.
- Other Dimming options customizable at extra cost

Cat Ref.	luminaire (W)	MRP
SSLE T10 7W D LFP WP SOLAR	7	45,000.00
SSLE T10 12W D LFP WP SOLAR	12	50,000.00
SSLE T10 15W D LFP WP SOLAR	15	55,000.00
SSLE T10 20W D LFP WP SOLAR	20	65,000.00
SSLE T10 25W D LFP WP SOLAR	25	75,000.00
SSLE T10 30W D LFP WP SOLAR	30	90,000.00
SSLE T10 35W D LFP WP SOLAR	35	1,10,000.00

**Solar Standalone**

System



- System includes LED luminaire, tubular lead acid battery or Lithium Ferrous Phosphate(LFP), polycrystalline panel, luminaire arm, module mounting structure, Pole.
- Other options available on request.

Cat Ref.	Description	MRP
SSLE SAS 20W SOLAR	20W, 75Wp Poly, 75AH Lead Acid battery, 6m Tubular pole complete	60,000
SSLE SAS 30W SOLAR	30W, 120Wp Poly, 100AH Lead acid battery, 6m Tubular Pole complete	1,10,000
SSLE SAS 45W SOLAR	45W, 200Wp Poly, 200AH Lead Acid, 6m Oct Pole	1,80,000
SSLE SAS 100W SOLAR	100W, 2X200Wp Poly, 2X150AH T Gel, 10m Oct Pole	3,25,000
SSLE SAS 180W SOLAR	180W, 2x445Wp Mono, 12.8V 320AH LFP, 10m Oct Pole	6,00,000

**Solar Flood Light**

System



System includes LED luminaire, Lithium Ferrous Phosphate battery, polycrystalline panel, module mounting structure , battery box [20W and 30W is integrated battery box, others non integrated] , 4m Panel cable. Remote controller, Bluetooth or any customization at extra cost.

Cat Ref.	luminaire (W)	MRP
SSLE FLS 20W SOLAR	20W	54,000
SSLE FLS 30W SOLAR	30W	65,000
SSLE FLS 40W SOLAR	40W	90,000
SSLE FLS 60W SOLAR	60W	POR

### Solar Decorative Post Top System

System



System includes LED luminaire, Lithium Ferrous Phosphate Battery, Monocrystalline panel, Charge controller

Cat Ref.	luminaire (W)	MRP
SSLE PT 12W SOLAR	12	65,000
SSLE PT 16W SOLAR	16	75,000

### Solar Decorative Post Top Panel On Pole System

On Pole System



System includes LED luminaire, lithium ferrous phosphate battery, Mono crystalline panel and pole frame. Pole is 4m for 2500 lumen and 6m for 6000 lumen system. Customisation as extra cost.

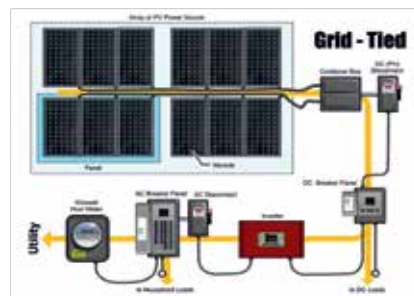
Cat Ref.	luminaire (W)	MRP
URBAN SPOT CIRCULAR 2500 LUMEN SOLAR	25	2,50,000
URBAN SPOT CIRCULAR 6000 LUMEN SOLAR	60	3,25,000
URBAN SPOT STREET 2500 LUMEN SOLAR	25	2,40,000
URBAN SPOT STREET 6000 LUMEN SOLAR	60	3,15,000

### Solar Roof Top System

System

Grid Connected rooftop System Solution

Rooftop System solution with Battery Bank Storage



**Solar Home Light System**



System includes LED BULB, LFP / Lead Acid Battery, Polycrystalline panel, Charge controller. Bluetooth and Hybrid Option available at extra cost. Other options are available on request.

Cat Ref.	Description	MRP
SSLE SOLAR HLS P1	3Wx3 nos Bulb, 50Wp, 40AH Lead acid Battery, 5A MPPT Charge Controller, Accessories	42,000
SSLE SOLAR HLS P2	2X 4W bulb, 40Wp, 12AH LFP, 5A MPPT Charge Controller	50,000

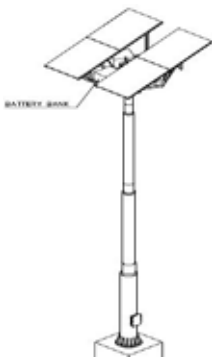
**Solar Mini High Mast System**



System includes SEMI INTEGRATED LED luminaire, Lithium Ferrous Phospahte battery in light fixture housing, polycrystalline panel, module mounting structure, Excluded Octagonal Pole 6m/7m.

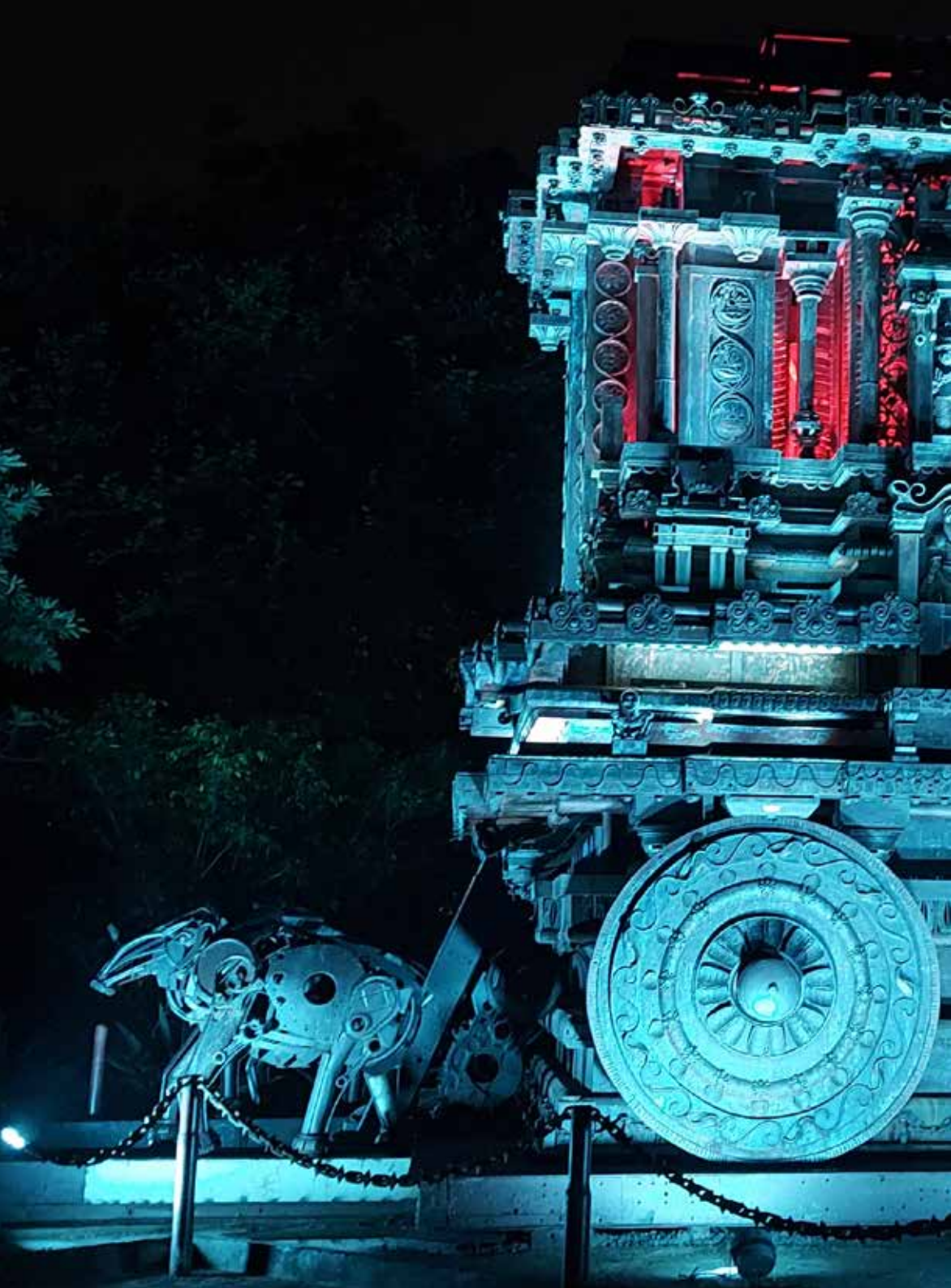
Cat Ref.	luminaire (W)	MRP (INR)
SSLE T10 HM 23W SOLAR	4X23W	2,70,000
SSLE T10 HM 35W SOLAR	4X35W	3,70,000

**Solar High Mast System**



System includes 4 sets of LED luminaire, Lithium Ferrous Phosphate Battery with Battey box, Polycrystalline panel, Charge controller, 10M High mast Pole in 4 segments with movable Lantern carriage, Manual winch. Hybrid and Bluetooth option available at extra cost. Any customization will be charged extra.

Cat Ref.	luminaire (W)	MRP (INR)
SSLE HM 4 80W 200WP 100AH LFP 10P SOLAR	4x(80W, 200Wp, 100Ah LFP) Dimming	8,00,000
	High Mast 10m in 4 segments designed for 180kmph	inc above
SSLE HM 4 40W 125WP 54AH LFP 10P SOLAR	4x(40W, 125Wp, 60Ah LFP) Dimming	6,50,000
	High Mast 10m in 4 segments designed for 180kmph	inc above









# High Mast Pole Series



**High Mast Specifications at a glance**

Height	30M	25M	20M	16M	12.5M
No. of sections	3	3	2	2	2
Base & Top outer dia in mm OAF	540 & 150	540 & 150	410 & 150	360 & 150	360 & 100
Thickness of sections in mm.	5/4/4	5/4/4	4/3	4/3	3/3
Base plate dia in mm.	740x30	740x30	570x25	560x25	520x25
PCD in mm.	650	650	490	460	445

**Common Features**

Slip-stress fit	
Raising/lowering speed	3 meters/min
Lubrication arrangement & type	Permanent oil bath - SAE 90/140
SS wire rope	AISI 316, 7/19 Const
*Dia of rope & breaking load	6 mm & 2350 kg/rope
Lifting capacity	500 to 750 kg
Trailing cable	ERP/PCP Sheathed Multi core flexible copper
Power tool (reversible)	440V, 50HZ, 1HP/1.5HP

**Other customized sizes in Latching, Signage & Flagmast are offered as per customer's requirement.**

- ▲ 2 Section Mast for 12/16/20 Mt.
- ▲ 3 Section Mast for 25/30 Mt.
- ▲ 4 Section Mast for 35/40 Mt.
- ▲ Wind velocity upto 225 km/hr
- ▲ Galvanized Steel
- ▲ 2/3 Pulley Wire Rope System
- ▲ Motorised & Manually operated Winch for Lantern Carriage
- ▲ Flood light luminaires with appropriate CG Box & HID Lamps
- ▲ Aviation Obstruction Lamp for LED.

**Applications**

- |                |                |                            |
|----------------|----------------|----------------------------|
| Flyovers       | Airport Aprons | Container Terminals        |
| Road Junctions | Dockyards      | Petrol Pumps               |
| Parks          | Coal Yards     | Other Outdoor Applications |
| Parking Areas  | Power Plants   |                            |

**Specifications**

Octagonal Hot-Dip Galvanised street light poles

Cat Ref.	Height	Top Dia. (A/F)	Bottom Dia. (A/F)	Sheet Thickness	Base Plate Dimensions L x W x T	Foundation bolts (No. x Dia x Length)	PCD
Unit	Mtrs.	mm	mm	mm	mm	mm	mm
SRL-OP-303	3	70	130	3	200x200x12	4xM16x450	200
SRL-OP-403	4	70	130	3	200x200x12	4xM16x450	200
SRL-OP-503	5	70	130	3	200x200x12	4xM16x600	200
SRL-OP-603	6	70	130	3	200x220x12	4xM20x600	220
SRL-OP-703	7	70	130	3	220x220x12	4xM20x700	220
SRL-OP-803	8	70	135	3	225x225x16	4xM20x700	225
SRL-OP-903	9	70	155	3	260x260x16	4xM24x750	260
SRL-OP-1003	10	70	175	3	275x275x16	4xM24x750	275
SRL-OP-1103	11	90	210	3	300x300x20	4xM24x850	300
SRL-OP-1203	12	90	240	3	325x325x20	4xM24x850	325

Other customized sizes & specifications are offered as per customer's requirement.

Standard essential accessories offered with light poles

Foundation bolts and template

**Hot Dip Galvanised Bracket Arms**



**SBA-01**



**SBA-02**



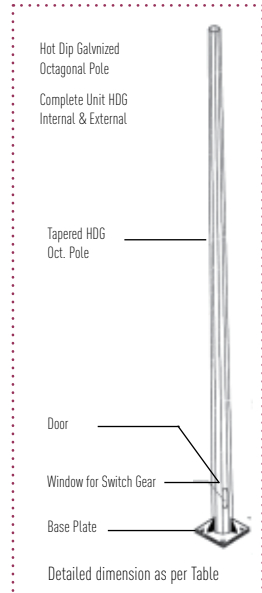
**SBA-03**



**SBA-04**



**Galvanised Octagonal Poles**





### Occupancy Sensor



PIR Sensor Detection Rang:360°  
 Power Source: 220-240V/AC  
 Rated Load: max. 2000W (220-240V/AC)  
 Detection Distance: max.20m (<24°C)  
 Time Delay: 10sec±3sec to 30min±2min (adjustable)  
 Ambient Light: <3-2000LUX (adjustable)  
 Installation Height: 4m-6m , IP54

Cat Ref.	Case Lot	MRP
SLE CSS 2K20M	2	POR

### PIR Sensor



Detection Range: 360°  
 Power Source: 220-240V/AC  
 Rated Load: Max. 1200W (220-240V/AC)  
 Detection Distance: max.6m (<24°C)  
 Time Delay: 10sec±3sec to 7min±2min (adjustable)  
 Ambient Light: <3-2000LUX (adjustable)

Cat Ref.	Case Lot	MRP
SLE CSS 1K06M	2	POR

### PIR Sensor Wall Mounted



Detection Range: 180°  
 Power Source: 220-240V/AC  
 Rated Load: Max. 1200W (220-240V/AC)  
 Detection Distance: max.15m (<24°C)  
 Time Delay: 10sec ±3sec to 15min±2min (adjustable)  
 Ambient Light: <3-2000LUX (adjustable)  
 IP65°

Cat Ref.	Case Lot	MRP
SLE WSS 1K15M	2	POR





# Bharat Darshan Park

Lighting Project Completed By Surya





Bharat Darshan  
Park





3D Projection & Facade Lighting At  
Piteshwar Hanuman Temple

## Important Note

1. MRP is inclusive of GST.
2. Ordering of Luminaires & Lamps needs to be done on case lot basis No guarantee offered for transit damage in case of the broken-down case lot.
3. Warranty voids for LED fixture including drivers, if individual points of installation are not provided with proper earthing.
4. Based on improvements our products are subject to up-gradation which may result in change of design, shape & data if compared to the products as appearing in the price list.
5. Customer is advised to reconfirm the data or product dimensions before purchase with our local representative.
6. This price list supersedes all earlier price list & company reserves the right to issue amendments which may arise due to any errors in the price list, without any prior notice.
7. Disputes, if any are subject to Delhi Jurisdiction only.



**AHEMADABAD**

101, SHAFALI CENTRE, NEAR PALDI, CHAR RASTA, AHMEDABAD - 380006 (GUJARAT)  
TEL : -079 - 26575724  
E-mail: lighting.ahmedabad@surya.in

**BAHADURGARH**

PRAKASH NAGAR, DELHI-ROHTAK ROAD, BAHADURGARH -124 507 (HARYANA)  
TEL:- 9315194152

**BENGALURU**

SURVEY NO. 58/1 & 59/2, ANCHEPALYA VILLAGE, KAMBIPURA KENGERI HOBLI, NEXT TO MANJUNATHA AYURVEDIC COLLEGE, MYSORE ROAD, BENGALURU - 560060 (KARNATAKA)  
TEL:- 080-32973898  
E-mail: lighting.bangalore@surya.in

**BHUBANESHWAR**

PLOT NO. 111/762, MOUZAIRUDRAPUR PO-PAHAL, HIGHWAY HONDA SHOWROOM, NH-5, BHUBANESHWAR -752101 (ORISSA)  
TEL:- 0674 - 2463324  
Email: lighting.bhubneshwar@surya.in

**CHENNAI**

SURVEY NO .52/4B3, DOOR NO.4/177, SOORAPATTU VILLAGE, AMBATTUR TALUKA PUZHAL - AMBATTUR ROAD, TIRUVALLUR DISTRICT, CHENNAI - 600066 (TAMIL NADU)  
TEL:- 044-22641072 | 22641027  
Email : lighting.chennai@surya.in

**COIMBATORE**

DOOR NO. A-141, KURUCHI HOUSING UNIT, PHASE-2, SIDCO POST, COIMBATORE-641021 (TAMIL NADU)  
TEL:- 09655450455, 09159977888

**COCHIN**

49/B81-C, NEAR SHIVA TEMPLE, PUTHUKALAVATOM, P.O. ELAMAKKAR, ERNAKULAM, COCHIN - 682026 (KERALA)  
TEL:- 0484-320899812537242  
E-mail: lighting.kochi@surya.in

**DEHRADUN**

231.232 1st FLOOR ETASH BLOCK, SANDHU CENTRE, TRANSPORT NAGAR CLEMENT TOWN, DEHRADUN -248002 (UTIRAKHAND)  
TEL:- 07409000145  
E-mail: lighting.uttarakhand@surya.in

**DELHI**

KHASRA NO. 915-916, GULERIA HOUSE, (BASEMENT) NEAR RICE MILL, RITHALA, VILLAGE, NEW DELHI -110085  
TEL:- 011-27055534  
E-mail: lighting.delhi@surya.in

**GHAZIABAD**

KHASRA NO. 243, VILLAGE AFJAMPUR, POST NISTOLI PIPE LINE ROAD, NEAR BHARAT CITY, GHAZIABAD - 201005  
TEL:- 09971815421  
E-mail: cwh.operation@surya.in

**GUWAHATI**

CHOUDHARY SALES CORP., 107, M.G.ROAD, FANCY BAZAR, GUWAHATI - 781001 (ASSAM)  
TEL:- 0361-2513069  
E-mail: lighting.guwahati@surya.in

**HUBLI**

No.16R 1L, MAHAVEER WARE HOUSE BEHIND JAIN TAMPLE, P.B. ROAD NEW GABBUR, HUBLI - 580030 (KARNATAKA)  
TEL:- 09901411288

**INDORE**

PLOT NO. 7512, S.K.1 COMPOUND, NEAR LASUDIA MORI TALAB, LASUDIA MORI, INDORE -452010 (M.P.)  
TEL:- 0731-2802239  
E-mail: lighting.indore@surya.in

**JABALPUR**

KHASRA NO. 21/6, BEHIND HONDA SHOWROOM, GRAM KATHONDA, NEAR KATANGI BYPASS CHOWK, JABALPUR -482002 (M.P.)  
TEL:- 0761 -4041261  
E-mail: lighting.jabalpur@surya.in

**JAIPUR**

429, 4TH FLOOR, GANPATI PLAZA, M.I. ROAD, JAIPUR - 302013 (RAJASTHAN)  
TEL:- 0141 - 2175408  
E-mail: lighting.jaipur@surya.in

**KOLKATA**

55, EZRA STREET, 4TH FLOOR YAMUNA BHAWAN, KOLKATA- 700001 (WEST BENGAL)  
TEL:- 033-40726171  
E-mail: lighting.kolkata@surya.in

**LUCKNOW**

PLOT NO. C -57, TRANSPORT NAGAR, PHASE - 2, LUCKNOW - 226012 (U.P.)  
TEL:- 0522 - 4007720  
E-mail: lighting.lucknow@surya.in

**MADURAI**

NO. 21, BYPASS ROAD, AVANIAPURAM, MADURAI -625012 (TAMILNADU)  
TEL:- 09176781300

**MUMBAI**

513-514, VYAPAR BHAWAN, 49, P.D. MELLOROAD, CARNAC BUNDER, MUMBAI - 400009 (MH)  
TEL:- 022-23481180  
E-mail: lighting.mumbai@surya.in

**NAGPUR**

D1/A & D- 412, MIDC, WADI - HINGNA ROAD, WADI, NAGPUR -440028 (M.H.)  
VILLAGE, NEW DELHI -110085  
TEL:- 07104 - 232213 | 232886  
E-mail: lighting.nagpur@surya.in

**PATNA**

PATNAGAYAMAIN ROAD, OLD RELIANCE WARE HOUSE, VILLAGE BAIRIYA, PATNA- 800007 (BIHAR)  
TEL:- 07549206888  
E-mail: lighting.patna@surya.in

**PUNE**

401, KARACHIWALACHAMBERS, 16, M.G.ROAD (OPP. RESTAURANT MONA FOOD)  
PUNE-410001 (MH)  
TEL:- 020 -26050282  
E-mail: lighting.pune@surya.in

**RAIPUR**

INFRONT OF MAGNATO MALL, BEHIND SHIVNATH HYUNDAI SERVICE CENTRE, ARANG ROAD, TELIBANDHA, RAIPUR -492001 (C.G.)  
TEL:- 0771-4073115  
E-mail: lighting.raipur@surya.in

**RANCHI**

DALADALI CHOWK, SIMALIYA ,RATU, NEAR BSNL TOWER, RING ROAD, RANCHI - 834009 (JHARKHAND)  
TEL:- 0651-3299898  
E-mail: lighting.ranchi@surya.in

**SECUNDERABAD**

8-7-14 MARRI BAL REDDY NAGAR, (RAJESHWARI NAGAR) SURVEY NO .18, OLD BOWENPALLY, SECUNDERABAD - 500003  
TEL:- 040-27897258  
E-mail: lighting.secunderabad@surya.in

**SILIGURI**

C/O MIS SUMAN TEA & PLYWOOD INDUS. PVT. LTD., NEAR P.C.MITIAL BUS STAND, 2ND MILE SEVOKE ROAD, P.S.BHAKTI NAGAR SILIGURI - 734001 (WEST BENGAL)  
TEL:- 0353 - 2540425

**VARANASI**

ARAJI NO 352, MAUJA- KESARIPUR, ROHANIYA G.T. ROAD, NEAR DHANPAT CONVENT HIGH SCHOOL, VARANASI-221106, (U.P)  
TEL:- 09936775751

**VIJAYWADA**

D.NO. 2-9, ROHINI RICE MILL, ENIKEBADU, VIJAYWADA - 521108  
TEL:- 0866 - 24173512411654  
E-mail: lighting.vijaywada@surya.in

**VISAKHAPATNAM**

PLOT No. 48, APPAREL EXPORT PARK, AUTO NAGAR, NEAR THUNGALAM VILLAGE, GAJUWAKA MANDAL, VISAKHAPATNAM - 530012  
TEL:-09581663181, 08179515839

**ZIRAKPUR**

KHASRA NO. 1684/11, VILLAGE BHABAT HADBAST NO. 234, MC ZIRAKPUR, DERABASSI, ZIRAKPUR - 140603 (PUNJAB)  
TEL: 09780377272  
E-mail: lighting.zirakpur@surya.in

# SURYA

Surya Roshni Limited  
Padma Tower - 1, Rajendra Place,  
New Delhi - 110008 (INDIA)

Tel.: +91-11-47108000, 25810093-96  
Fax: +91-11-25789560  
E-mail: [consumercare@surya.in](mailto:consumercare@surya.in)

Visit Us At :  
[www.surya.co.in](http://www.surya.co.in)  
or  
Scan QR Code



TOLL FREE - 1800 102 5657

Connect Us

