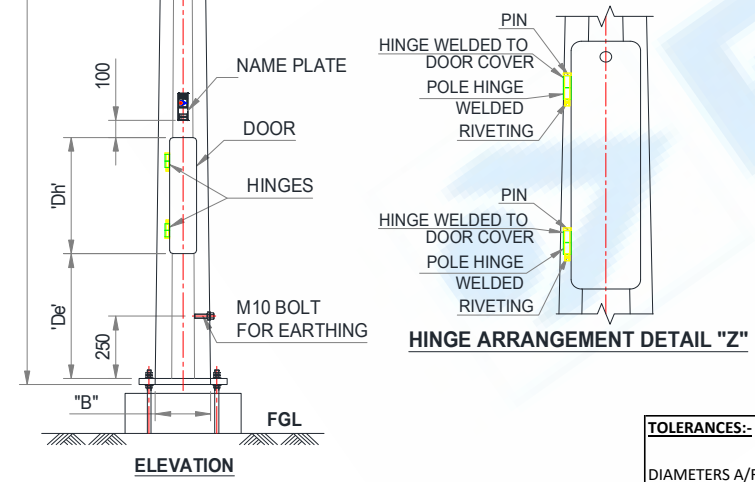
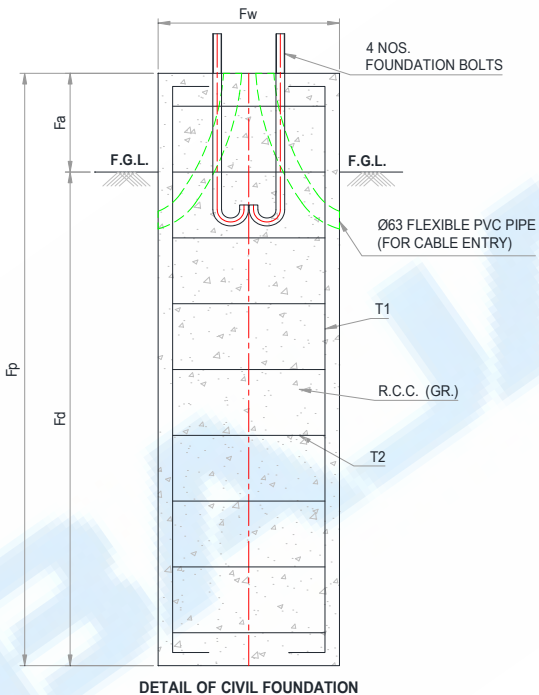
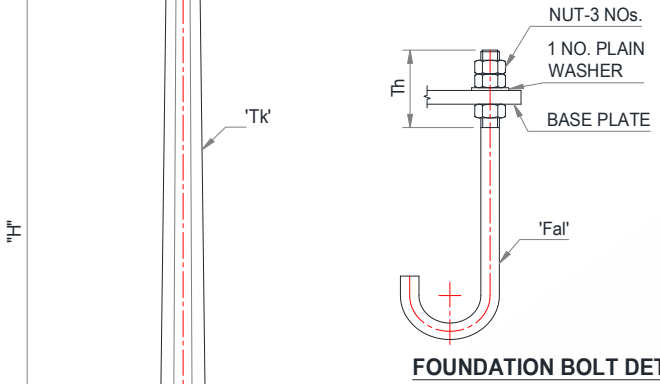
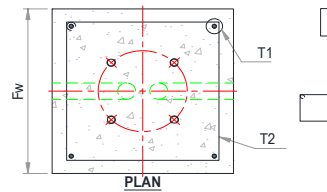
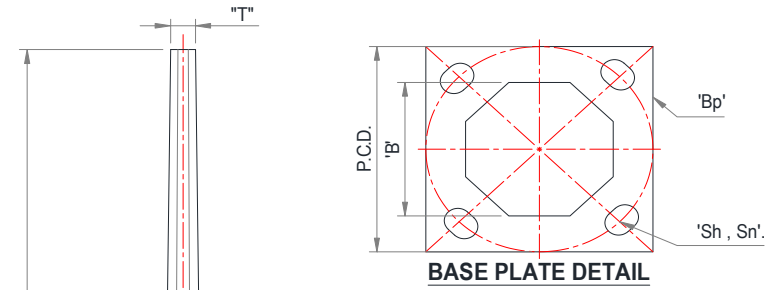


GENERAL NOTES:-

1. ALL DIMENSIONS ARE IN M.M.
2. DESIGN STANDARD BS EN 40-3-1&3
3. DESIGN CRITERIA :
 - 3.1. BASIC WIND SPEED - IS: 875 PART III : 2015
 - 3.2. DESIGN LIFE - 25 YEARS.
 - 3.3. TERRAIN CATEGORY - 2
 - 3.4. TOPOGRAPHY - FLAT
4. MATERIALS:
 - 4.1. SHAFT : HOT ROLLED STEEL PLATE CONFORM TO IS-2062/ BSEN 10025 OR EQUIVALENT GRADE.
 - 4.2. FLANGE/GUSSETS/DOOR STIFFENER : AS PER IS-2062/ BSEN 10025 OR EQUIVALENT GRADE.
 - 4.3. FOUNDATION BOLTS: EN-8 GRADE
5. FINISHING: HOT DIP GALVANIZED TO BS EN ISO 1461.
6. TOLERANCES SHALL BE AS PER BS EN 40-2 UNLESS OTHERWISE SPECIFIED IN THE DRAWING
7. MAKE OF THE POLE "BAJAJ".
8. THIS HAS TO BE READ IN CONJUNCTION WITH FINAL OFFER

FOUNDATION NOTES:-

1. ASSUMED S.B.C. - 10 T/M² (MINIMUM)
2. GRADE OF STEEL REINFORCEMENT Fe 415 / Fe 500
3. CLEAR COVER TO REINFORCEMENT - 50 MM
4. CONCRETE VIBRATED
5. USE SHUTTERING



Sr. No.	Abbreviation	Parameters	Detail
POLES			
1	H	Height of pole.	11 Mtr.
2	T	Pole Top A/F.	90mm
3	B	Pole Bottom A/F.	210mm
4	Tk	Shaft Thickness.	3mm
5	Dh	Door Height	500mm
6	De	Door elevation	500mm
7	Bp	Base plate dim.	300x300x16mm
8	Sh	Slot / Hole dim.	28x60mm
9	Sn	No. of slot/holes.	4 nos.
10	PCD	PCD	300mm
11	S	Pole Shape/sides	Octagonal
FOUNDATION BOLT			
1	Fal	Foundation Bolt Detail	EN8 Grade, M24x750mm J Type
2	Th	Threaded Length	120mm
FOUNDATION BLOCK DETAIL			
1	Fp	Total Depth	1900mm
2	Fd	Planting Depth	1700mm
3	Fa	Elevation above ground	200mm
4	Fw	Width	500mm
5	T1	Bar dia & qty in nos.	Ø12mm - 04 nos.
6	T2	Bar dia & CTC spacing	Ø8mm at 190 C/C
7	RCC (GR)	Concrete Grade	M-20

TOLERANCES:-

DIAMETERS A/F	± 2.5 %
POLE TOTAL LENGTH	± 1.2 %
POLE STRAIGHTNESS	± 0.3 %

CLIENT:	----			
PROJECT:	STREET LIGHTING			
DEALER:	----			
MANUFACTURER:	BAJAJ ELECTRICALS LIMITED			
TITLE:	INDICATIVE GENERAL ARRANGEMENT & FOUNDATION DRAWING OF 11M OCTAGONAL POLE			
DATE:	15-02-2024			
DRWN BY:	MTP	PROJECT CODE:	DRG NO.	PL-OP-24-STD-11M HS-001
DSGD BY:	SK	STD	SHEET:	
CHKD BY:	UM	DESIGN CODE:	01 of 01	
APPRD BY:	SA		REV. NO.:	
				00

This drawing is property of "BAJAJ ELECTRICALS LTD." & must returned on request. It is submitted as confidential information in connection with enquiry, tenders, orders or contracts. It is not to be used for any other purpose or order nor may it be re-copied or lent without our authority in writing.

REV. NO.	DATE	REVISION DESCRIPTION	DRWN	CHKD	APPRD