

DATA SHEET

Padel Court Mod. PREMIUM SEP-D



Robust Padel Court made of modular **reinforced frame construction** for an installation **OUTDOOR**, with safety transitions for players.

Padel Court is designed to withstand the basic wind speed in your location, which can reach up to **44 m/s (158 km/h)**, depending on the terrain category.

For commercial and private use.



STRENGTH CATEGORY

1 2 3 **4** 5



Calculated according to
EUROCODES

Mod. PREMIUM SEP-D



TECHNICAL DETAILS		OUTDOOR USE
Construction system	EUROCODE EN 1991-1-4	Reinforced frame construction (20 x 10 m)
Frame Steel Structure	EN 10219-2	80 x 40 x 3 mm
Vertical pillar reinforcement	EN 10219-2	140 x 80 x 5 mm
Structural Engineering Package	EUROCODE - EN 1991-1-4	SEP-D
Corrosion protection	EN ISO 2081:2018	Galvanised
Corrosion protection for areas with heavy corrosion load (Optional)	EN ISO 12944-2	Epoxy resin zinc powder primer, Corrosive category: C4 high (industrial and coastal areas with moderate salt load)
Paints and varnishes	DIN 55633	Polyester Powder coating
Tempered Glass	EN-12150-1	12 mm (108 m2 - 18 slabs - 3 x 2 m)
Glass stability system	Important!	All 4 sides
Surfaces for sports areas	EN 12235	Artificial grass in 12 mm fibrillated, monofilament or textured
Lighting (Optional)	EN 12193:2008	Classes I-III: 500 Lux / 300 Lux / 200 Lux
Safety transitions for players		Included
Middle net	EN 1510	approved by FEP (Spanish Padel Federation)

Manufactured according to the standards of the International Padel Federation.

MOST POPULAR COLOR COMBINATIONS (STEEL + TURF)

RAL 6009	
RAL 9011	
RAL 9011	
RAL 5022	
RAL 3005	
RAL 9011	
RAL 4007	
RAL 9011	

FLOOR REQUIREMENTS

Foundation plans on request.

	REINFORCED CONCRETE STRIP FOUNDATION WITH DRAINAGE OR SIMPLE SLAB WITH SLOPE



All materials covering our value proposition have as origin Spain (EU-European Union), except the LED-Lighting System. For safety reasons we do NOT import any items like *glass* or *artificial grass* from countries outside the EU. Preferential origin from the European Union (EU) confers certain tariff benefits (entry at a reduced or zero rate of duty).

REINFORCED FRAME CONSTRUCTION

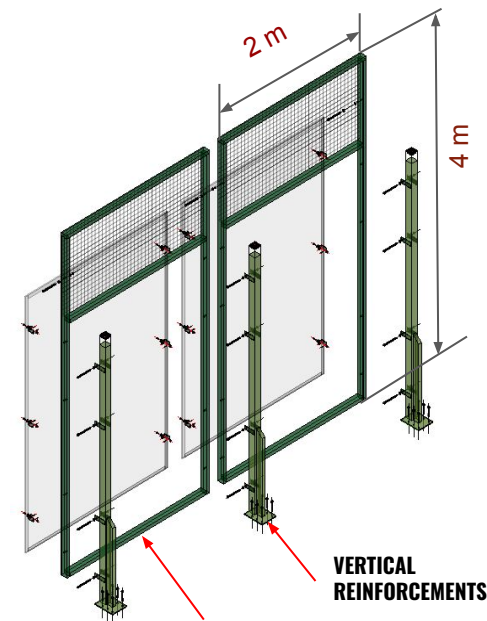
Mod. PREMIUM SEP A-E

PROS

- Designed for installation outdoor with high safety features.
- Structural engineering report available as per EUROCODE
- Available in 5 different strength categories.
- Pre-welded frames (80 x 40mm) for safe glass fixings.
- Reinforced pillars with 4 fixing points to the frame.
- Excellent structural strength for any outdoor use and terrain category (ex. beach-city)
- Excellent playing experience.
- Overall impression: solid and safe construction

LOGISTIC FEATURES

- Shipment per container (seafreight):
1 Padel Court per 40ft-OT-container
- Shipment by truck: 2 Padel Courts per truck



Pre-welded frames

Structural Engineering Packages (SEP)



EN 1991-1-4

TERRAIN CATEGORIES AS PER EUROCODE

Basic wind speed (km/h)	79 < W < 86					86 < W < 93					93 < W < 100					100 < W < 108					108 < W < 115				
Basic wind speed (m/s)	22 < W < 24					24 < W < 26					26 < W < 28					28 < W < 30					30 < W < 32				
Terrain category:	0	I	II	III	IV	0	I	II	III	IV	0	I	II	III	IV	0	I	II	III	IV	0	I	II	III	IV
SEP-A																									
SEP-B																									
SEP-C																									

Basic wind speed (km/h)	115 < W < 122					122 < W < 129					129 < W < 136					136 < W < 144					144 < W < 151				
Basic wind speed (m/s)	32 < W < 34					34 < W < 36					36 < W < 38					38 < W < 40					40 < W < 42				
Terrain category:	0	I	II	III	IV	0	I	II	III	IV	0	I	II	III	IV	0	I	II	III	IV	0	I	II	III	IV
SEP-B																									
SEP-C																									
SEP-D																									
SEP-E																									

Basic wind speed (km/h)	151 < W < 158					158 < W < 165					165 < W < 172					172 < W < 180				
Basic wind speed (m/s)	42 < W < 44					44 < W < 46					46 < W < 48					48 < W < 50				
Terrain category:	0	I	II	III	IV	0	I	II	III	IV	0	I	II	III	IV	0	I	II	III	IV
SEP-D																				
SEP-E																				

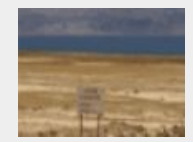
Conversion:
1 km/h = 0,62 mph

Due to continuous research and product improvement the specifications in this Product Information Sheet are subject to change without notice.

0



I



II



III



IV

