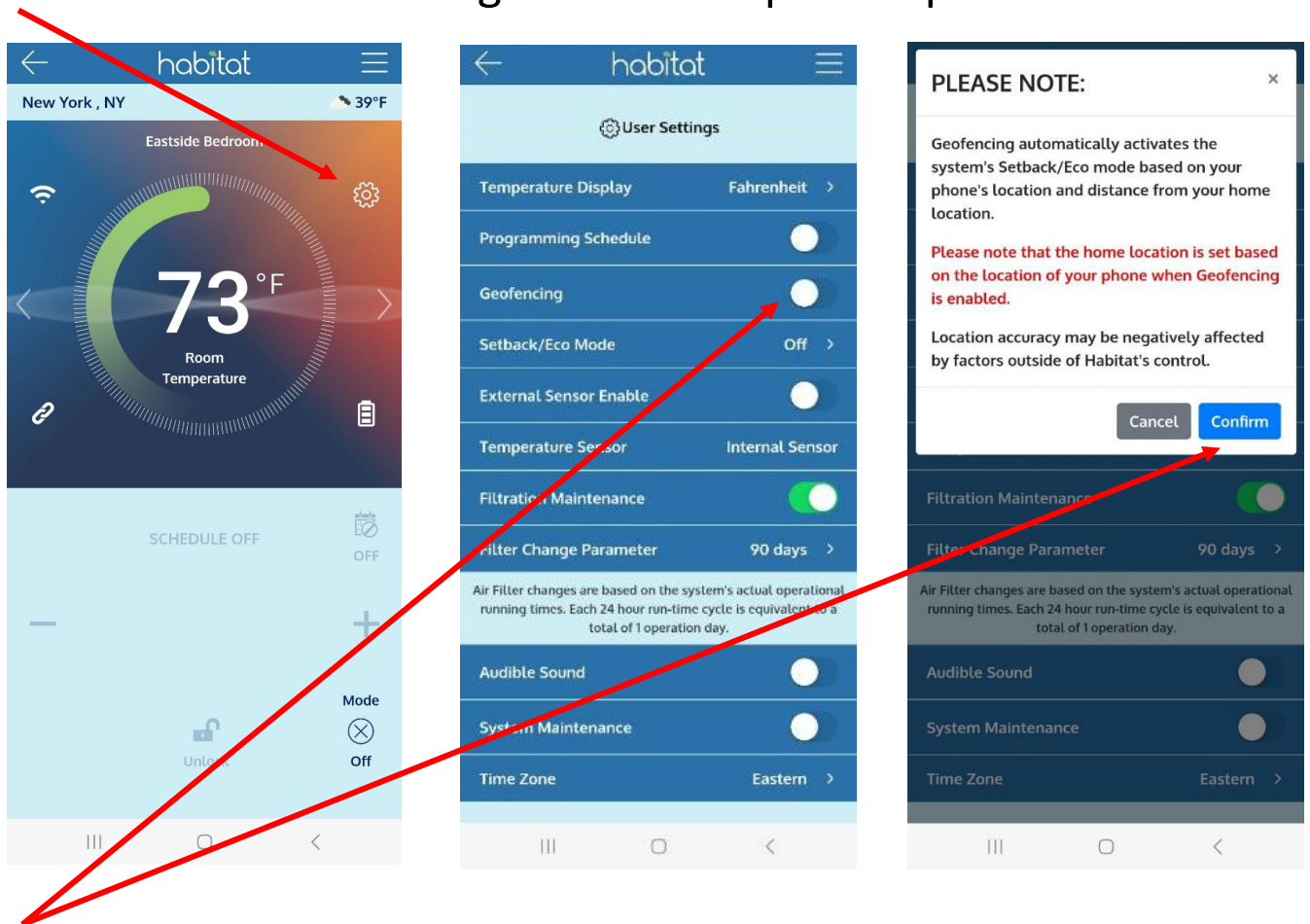


To enable the HomeSphere Geofencing feature please do the following:

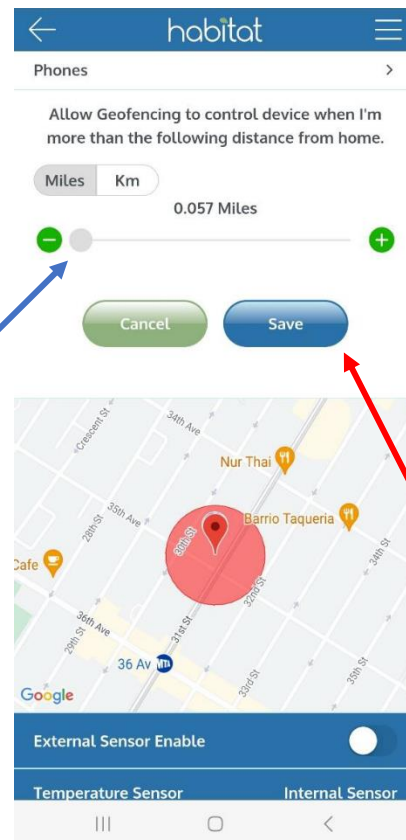
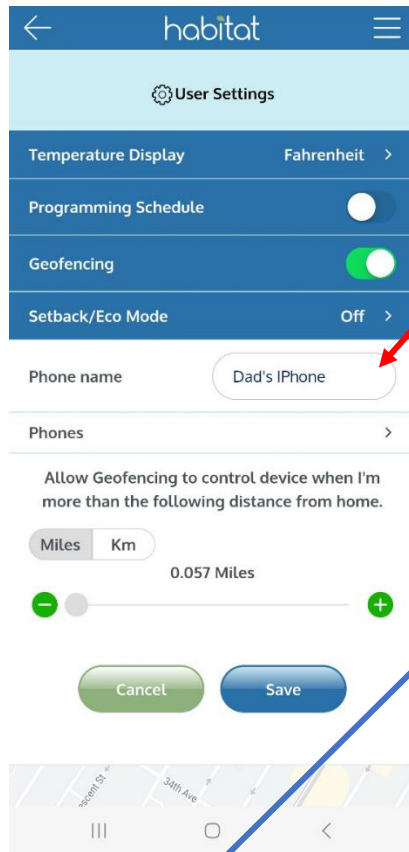
Open up the Habitat's HomeLink app and select a unit's thermostat.

Press on its user setting's icon and open it up.



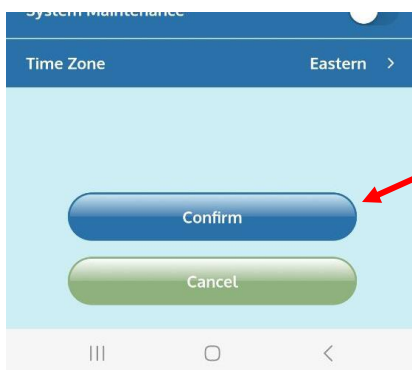
Turn on the Geofencing button and press the Confirm button.

Next, fill in the ‘Phone Name’ field.

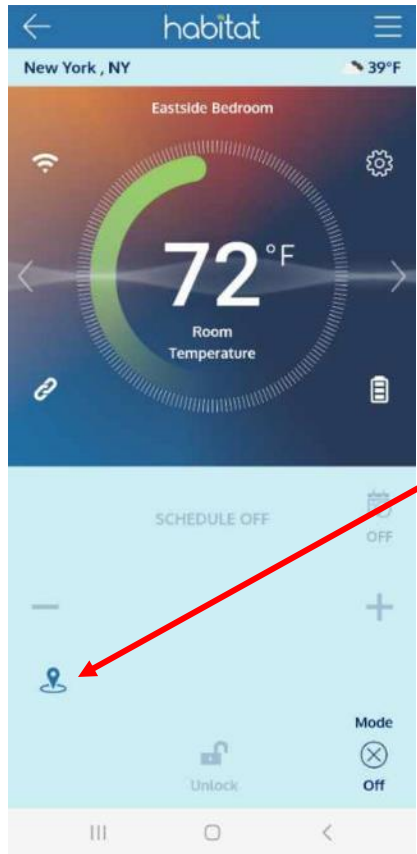


Then , select and adjust the range field to control the unit’s activation settings.

Press the ‘Save’ button to store your selection.

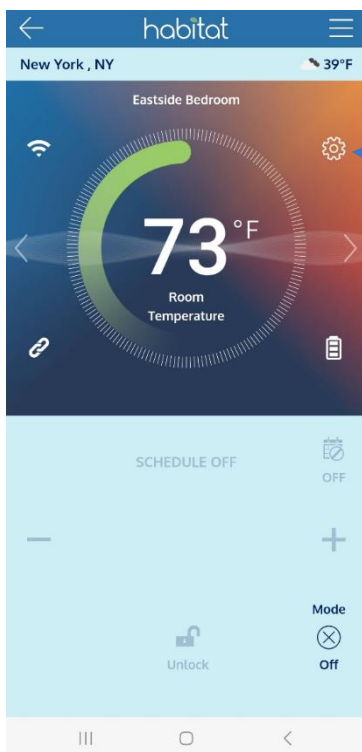


Next, press the ‘Confirm’ button to save your settings.



The HomeSphere geofencing icon will now be displayed on the screen.

To update a system's "Setback/Eco" mode's temperature settings setpoints, for HomeSphere geofencing, please do the following:

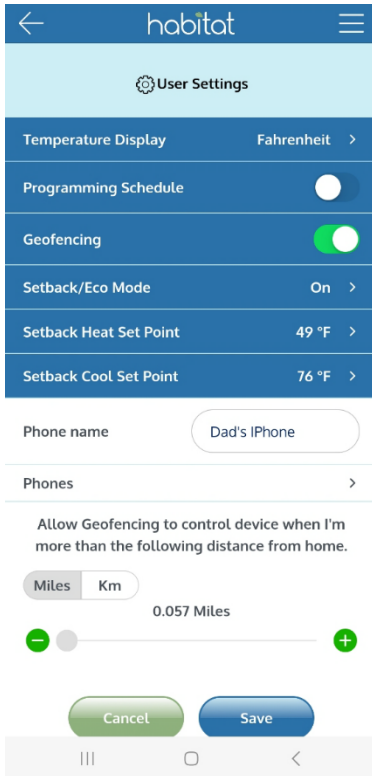


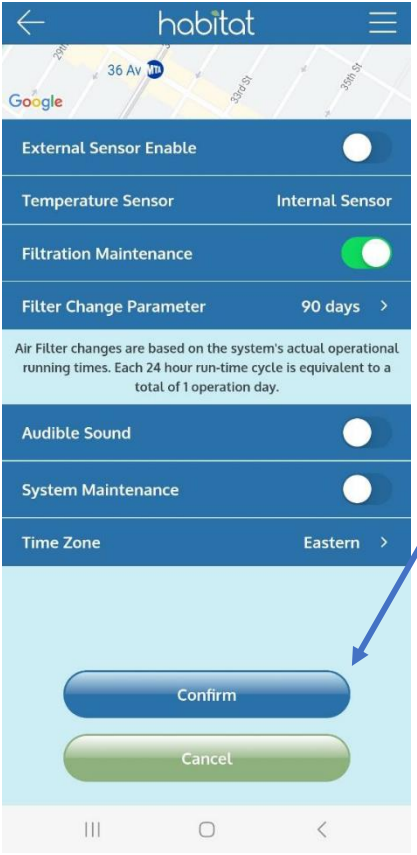
Open up the app and select a unit's thermostat.

Press on its user setting's icon and open it up.

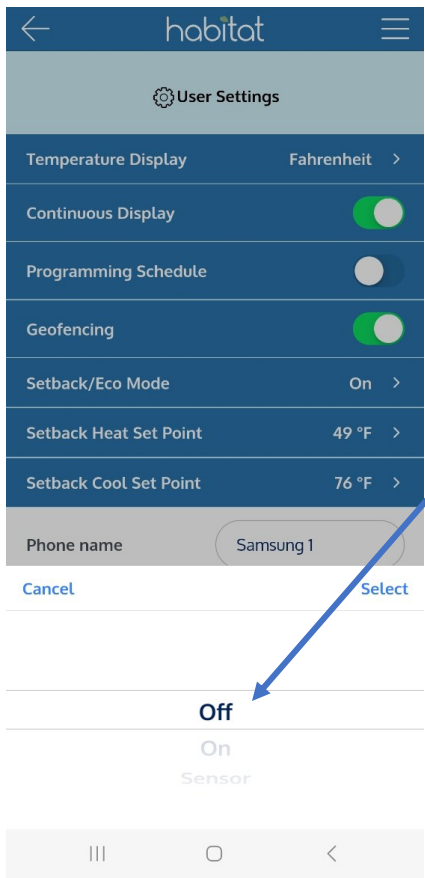


Select the “Setback/Eco” mode” and engage it, after select both the “Heating” and “Cooling” mode temperature setpoints.





After setting the setpoints for both temperature modes press the “Confirm” button to store these settings.



Next, go into the “Setback/Eco” mode setting and change it to off. Press the “Select” icon and then press the “Confirm” button. The “Setback/Eco” mode will now automatically be enabled when the Geofencing is activated to