

Futurabond® U

DUAL-CURING UNIVERSAL ADHESIVE



Futurabond® U

RESEARCH FOR THE BEST BOND

In recent years the advancements in adhesive dentistry have been tremendous. VOCO has been working consistently and meticulously on the forefront of this innovation. Behind Futurabond U lies an extensive research and development process that had one goal in mind: to offer a universal adhesive, giving the practitioner nothing but advantages and reliability and thus eliminating the need for any other adhesive systems in the dental practice. Futurabond U sets new standards in regard to bond strength, and especially with its flexible and versatile application.

Uniquely universal

With Futurabond U in the *SingleDose*, VOCO is now launching the market's only dual-curing universal adhesive in disposable application blisters. Besides the incredibly simple handling of the *SingleDose*, the new Futurabond U offers practitioners an outstanding range of options for application, as much with regard to indications as to selection of the etching technique or the curing mode. Self-etch, selective-etch or total-etch: Futurabond U allows practitioners to freely select how they wish to condition the dental hard tissue, depending on the individual clinical situation and their preferred way of working.

Applied in a single layer, this new universal adhesive creates a strong bond to enamel and dentine, thus ensuring a durable, gap-free bond between the dental hard tissue and the restorative material. At the same time it offers firm adhe-

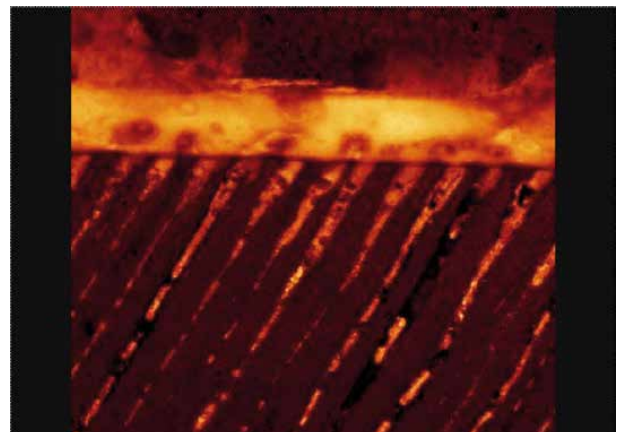
sion to different materials such as metal, zirconium dioxide, aluminium oxide and silicate ceramics without any additional primer. An outstanding bond strength is also guaranteed in cases of chemical curing, thus making Futurabond U ideal for luting posts within the root canal.

Success story Futurabond®

VOCO is systematically continuing the successful Futurabond line with the innovation of Futurabond U. Having distinguished themselves in numerous studies Futurabond NR, DC and M have established themselves in the dental practice as trusted bonding agents. Futurabond U guarantees excellent physical properties, giving you as the practitioner peace of mind that you can now depend on a single bond, and that this universal adhesive is the truly reliable partner which guarantees a stable adhesive bond.

One step application – secure adhesion

The innovative formulation of Futurabond U together with the highly functionalised SiO₂ particles ensures outstanding film-forming properties of the adhesive. The adhesive can thus optimally wet the exposed collagen fibres and the micro-retentive etching pattern on the enamel. During polymerisation the resin tags reaching into the dentinal tubules harden and strengthen the retentive bond of the collagen fibre-bonding hybrid layer. The reliable formation of these tags in the dentine is the best protection against postoperative sensitivities.

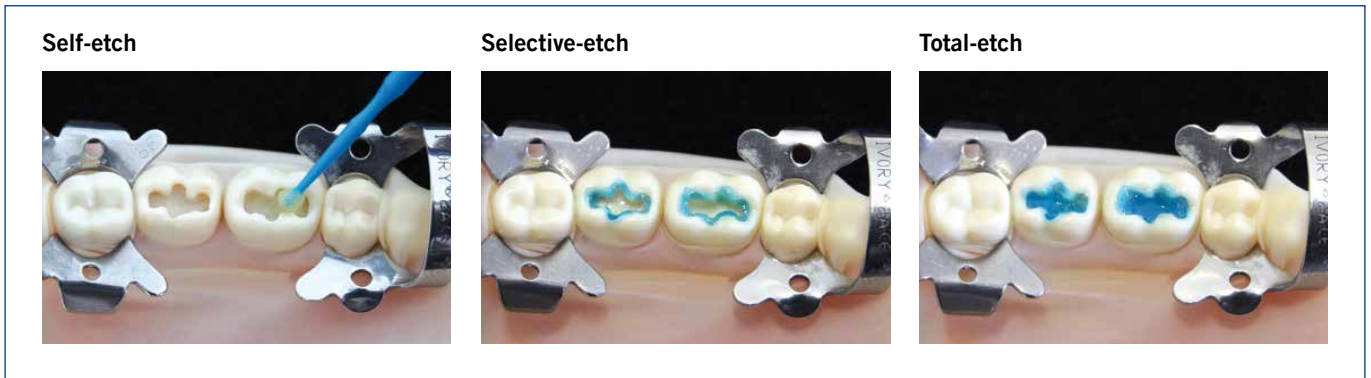


Source: Priv.-Doz. Dr.-Ing. Ulrich Lohbauer, University of Erlangen, 2013

Futurabond® U

ONE BOND FOR ALL CASES

Free choice of etching technique



Broad indication spectrum

Direct restorations of all classes of cavity, and core build-ups using any light-curing, self-curing or dual-curing methacrylate-based composite

Indirect restorations using any light-curing, self-curing or dual-curing methacrylate-based luting composite

Intraoral repair of fillings, ceramic veneers and all-ceramic restorations without additional primer

Treatment of **hypersensitive tooth necks**

Protective varnish for glass ionomer cement restorations

Sealing of cavities prior to amalgam restorations or prior to temporary luting

Luting of root posts with dual-curing or self-curing luting composites



Futurabond® U

EASY APPLICATION – ONLY 35 SECONDS WORKING TIME

Direct restoration

The direct restoration process is shown in a 2x4 grid of images:

- Image 1: Product packaging for Futurabond U SingleStep and a blue application brush.
- Image 2: A teal box with the text "SIMPLY PRESS! SIMPLY BOND!".
- Image 3: A hand holding the brush, with a downward arrow indicating the direction of application.
- Image 4: A hand holding the brush, with a circular arrow indicating the direction of application.
- Image 5: A cross-section of a tooth with a cavity. A blue brush tip is shown applying the material to the cavity wall. A "20 sec." timer is in the top right corner.
- Image 6: A cross-section of a tooth with a cavity. A blue brush tip is shown applying the material to the cavity wall. A "5 sec." timer is in the top right corner.
- Image 7: A cross-section of a tooth with a cavity. A blue brush tip is shown applying the material to the cavity wall. A "10 sec." timer is in the top right corner.

Indirect restoration

The indirect restoration process is shown in a 2x4 grid of images:

- Image 1: A teal arrow pointing right with the text "Cementation".
- Image 2: A cross-section of a tooth with a cavity. A blue brush tip is shown applying the material to the cavity wall. A "5 sec." timer is in the top right corner.
- Image 3: A cross-section of a tooth with a cavity. A blue brush tip is shown applying the material to the cavity wall. A "10 sec." timer is in the top right corner.
- Image 4: A hand holding a white instruction card that says "Instructions SC / DC material" and "voco".
- Image 5: A teal arrow pointing right with the text "Posts".
- Image 6: A cross-section of a tooth with a cavity. A blue brush tip is shown applying the material to the cavity wall. A "4" is in the bottom left corner.
- Image 7: A cross-section of a tooth with a cavity. A blue brush tip is shown applying the material to the cavity wall. A "5" is in the bottom left corner.
- Image 8: A cross-section of a tooth with a cavity. A blue brush tip is shown applying the material to the cavity wall. A large red "X" is overlaid on the image.

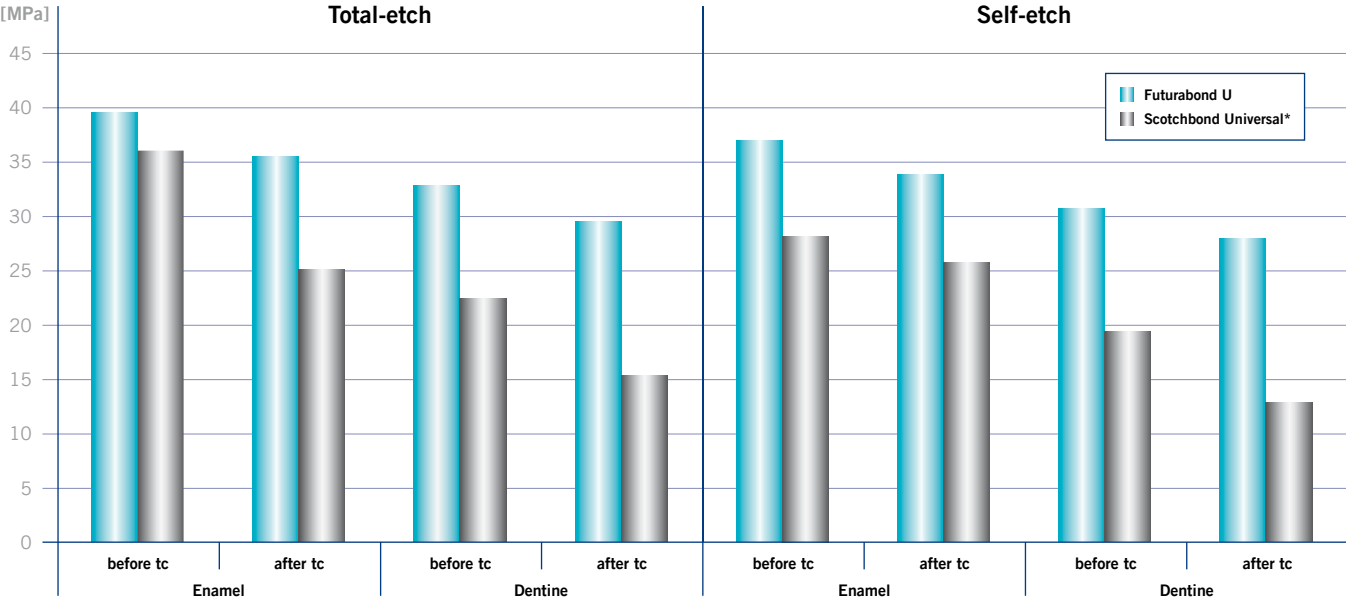
Futurabond® U

ONE BOND FOR ALL CASES

	Futurabond® U (VOCO)	Scotchbond Universal* (3M ESPE)	All-Bond Universal* (Bisco)	Prime&Bond elect* (Dentsply)	iBond SE* (Heraeus)	Syntac* with Heliobond* (Ivoclar Vivadent)
Self-, Selective- and Total-Etch	✓	✓	✓	✓	-	-
Direct restorations	✓	✓	✓	✓	✓	✓
Indirect restorations	✓	✓ ¹⁾	✓	✓ ²⁾	✓ ³⁾	✓
Compatible with all light-curing, self-curing or dual-curing composites	✓	✓ ¹⁾	✓	-	-	✓
Dual-curing in single dose	✓	-	-	-	-	-
Fast application in only one layer	✓	✓	-	✓	✓	-

- 1) Only with Scotchbond Universal DCA* (dual-curing activator) or RelyX Ultimate*
- 2) Only with Self Cure Activator*
- 3) Only in combination with light-curing luting cements

Shear bond strength on enamel and dentine, before and after thermocycling (tc)



Source: A. Abdalla, report to VOCO GmbH, 2013

*Scotchbond Universal, All-Bond Universal, Prime&Bond elect, iBond SE, Syntac, Heliobond, Scotchbond Universal DCA, RelyX Ultimate and Self Cure Activator are not registered trademarks of VOCO GmbH.

Futurabond® U

DUAL-CURING UNIVERSAL ADHESIVE

Indications

Direct and indirect restorations using any light-curing, self-curing or dual-curing methacrylate-based restorative, core build-up or luting composite

Intraoral repair of fillings, ceramic veneers and all-ceramic restorations without additional primer

Treatment of hypersensitive tooth necks

Protective varnish for glass ionomer cement restorations

Sealing of cavities prior to amalgam restorations or prior to temporary luting

Luting of root posts with dual-curing or self-curing luting composites



Presentations

- REF 1571 *SingleDose* 50 pcs., accessories
- REF 1572 *SingleDose* 200 pcs., accessories
- REF 1574 *SingleDose* trial pack (*SingleDose* 20 pcs., Vococid gel syringe 2 ml, accessories)
- REF 2246 Endo Tim, application brushes, to be used in the root canal, 50 pcs.
- REF 2247 Single Tim, application brushes, 100 pcs.

Advantages

- One bond for all cases! Makes all other adhesives in the practice redundant!
- Self-etch, selective-etch or total-etch – free choice for the practitioner
- Outstanding versatility of application
 - for direct or indirect restorations
 - fully compatible with all light-curing, dual-curing or self-curing methacrylate-based composites without additional activator for dual-curing
 - secure adhesion to various materials such as metal, zirconium dioxide or aluminium oxide, as well as silicate ceramics, without additional primer
 - treatment of hypersensitive tooth necks
 - protective varnish for glass ionomer cement restorations etc.
- Applied in one layer – only 35 seconds total working time
- Outstanding adhesion compared to other universal, self or total-etch adhesives
- Moisture tolerant
- Refrigeration not necessary

Futurabond® U in practical *SingleDose*

- Easy, quick and hygienic
- No additional devices required
- No spilling in any position

VOCO GmbH
Anton-Flettner-Straße 1-3
27472 Cuxhaven
Germany

Freecall: 00 800 44 444 555
Fax: +49 (0) 4721-719-140

info@voco.com
www.voco.dental

Available from: