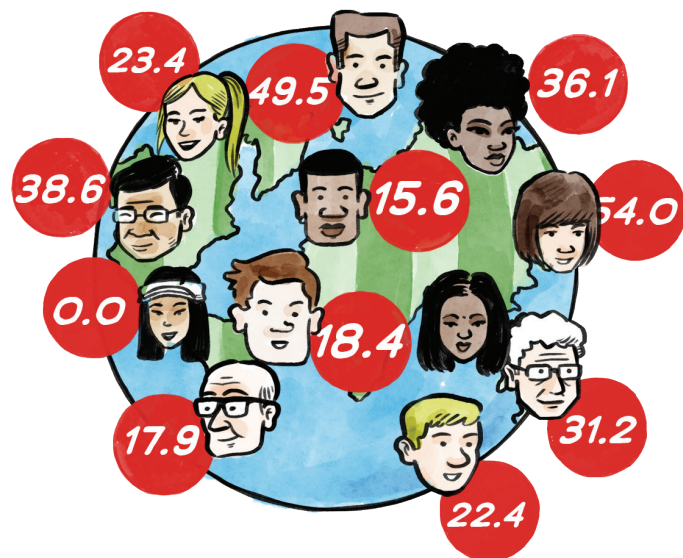


WORLD HANDICAP SYSTEM

Takes effect in Australia 30 January 2020
Visit www.golf.org.au/whs for all WHS information



GolfAustralia



What is the World Handicap System (WHS)?

Golf's two international governing bodies, The R&A and the United States Golf Association (USGA), have worked together with the world's major handicapping authorities to develop a single handicap system for the game. Golf Australia (GA) is one of the organisations that has been closely involved.

When does the WHS take full effect in Australia?

On 30 January 2020.

Where will I be able to see my handicap record once the WHS goes live in Australia on 30 January 2020?

www.golf.org.au is the only authorised website that will display your handicap record.

Who can I contact if I have questions about the WHS?

You can go to www.golf.org.au/whs, or speak to your club, or you can email GA at rules&handicapping@golf.org.au

What is in the World Handicap System and how much change is involved for Australian golfers?

The things that stay the same

- 1 Slope
- 2 Immediate handicap updates
- 3 No lapsed handicaps
- 4 Optional handicapping of 9-hole rounds
- 5 Stableford handicapping of stroke rounds
- 6 Optional handicapping of social rounds
- 7 Hard Cap of 5 strokes
- 8 Whole number Scratch Ratings
- 9 Optional handicapping of four-ball rounds
- 10 54 holes required for an initial handicap
- 11 No match play scores

The things that involve some change

- 12 Transfer of 0.93 Multiplier (which creates a small change to the formulas for the GA Handicap and Daily Handicap)
- 13 Adjustment to Daily Handicap formula when Scratch Rating is different to Par
- 14 Daily rating system (PCC)
- 15 Maximum handicaps

The things that are new

- 16 Soft Cap of 3 strokes
- 17 Bonus reduction for exceptional net score

The Components of the World Handicap System (WHS)

Part A

What stays the same for Australia?

- 1 **Slope.**
- 2 **Immediate handicap updates.** A player's handicap will continue to be updated by GOLF Link on the same day a score is processed.
- 3 **No lapsed handicaps.** Players will not be required to play a minimum number of rounds each year in order to maintain their GA Handicaps.
- 4 **9-hole.** Australia's regulations for the optional handicapping of 9-hole rounds will continue.
- 5 **Stableford handicapping.** Stableford handicapping of all Stroke competitions will continue.
- 6 **Social scores.** Continued handicapping of 'pre-nominated social scores' (when permitted by the home club).
- 7 **Hard Cap.** The Hard Cap of 5 strokes will continue. There will also be a Soft Cap at 3 strokes which will be a new regulation for Australia (see Part C).
- 8 **Scratch Ratings.** Whole number Scratch Ratings will continue.
- 9 **Four-ball.** Australia's regulations for the optional handicapping of four-ball competitions will continue.
- 10 **Initial handicaps.** A player will be required to submit 3 x 18-hole scores (or 6 x 9-hole scores, or a combination of the two).
- 11 **No match play scores.** Handicapping of match play scores will not be permitted.

Part B

What are the changes for Australia?

- 12 **Transfer of 0.93 Multiplier (which creates a small change to the formulas for the GA Handicap and Daily Handicap)**
 - The 0.93 Multiplier will be transferred out of the GA Handicap calculation and into the Daily Handicap calculation.
 - As a result, a GA Handicap will be calculated simply by averaging the best 8 of a player's most recent 20 results.
 - Note: Our statisticians confirm this change will have no overall impact on the handicaps players actually play off (ie Daily Handicaps). This is because the slight increase it will cause to GA Handicaps (by being removed from that formula), will be exactly the same as the decrease it will cause to Daily Handicaps (by being transferred into this formula). As a result there will be no overall impact. [See below for the full new Daily Handicap formula.]
- 13 **Adjustment to Daily Handicap formula when Scratch Rating is different to Par**
 - **Why the change?** Have you ever heard someone ask: "So, if I have 36 points, will that mean I've played to my handicap?" To which the answer is: "well, it kind of depends on whether there's a difference between the Scratch Rating and the par....."? Well we've heard plenty of feedback that this is confusing..... And the simple change happening under the WHS means 36 Stableford points will become the universal measure of whether a player has played to their handicap. Regardless of the course or set of tees.
 - **What is another key benefit?** Comparing results in multi-tee and mixed-gender competitions will be made simple – we've also heard the feedback on this and we know the current complexities are a barrier for many clubs. The change will help to drive game participation and engagement initiatives. It will also make it easier for clubs to manage their legal risk around compliance with the 1984 Federal sex discrimination law (see the Australian Human Rights Commission publication titled 'Guidelines for the promotion of equal opportunity for women and girls in golf' – www.golf.org.au/equality-guidelines).
 - **So what is the actual change?** The Daily Handicap formula will include an adjustment when the Scratch Rating is different to the Par. For example: Scratch Rating 73, Par 70 – Daily Handicaps will increase by 3* (ie 73 - 70 = +3); Scratch Rating 68, Par 70 – Daily Handicaps will decrease by 2* (ie 68 - 70 = -2). Note: *the Daily Handicap calculation usually produces a number with multiple decimal places, which is then rounded to a whole number; in some cases the rounding will soften the impact of the adjustment by 1.
- 14 **Daily rating system – PCC**
 - The WHS will feature a statistical daily rating system. It will be called PCC (Playing Conditions Calculation).
 - The WHS daily rating formulas and regulations have been in full effect in Australia since May 2019.
 - When the WHS comes into effect, the PCC will be displayed on your handicap record as an adjustment value (eg '+2' or '-1') rather than a value such as '68' or '72' as happens pre-WHS under the Australian DSR system.
 - PCCs are permitted to range anywhere between -1 (ie easier conditions) and +3 (harder conditions).
- 15 **Maximum handicaps**
 - The maximum GA Handicap under the WHS is 54.0 for both men and women.
 - Your club's handicap & competition management software can choose default handicap limits lower than 54 for any (or all) competitions.
 - For example, your club may choose to set Daily Handicap limits at 36 for men and 45 for women for most competitions. And then use a higher limit for beginner competitions or for events for less-skilled players.

Do you need to remember how all of this is done?

No! Because it will all be done for you by the computers and the Daily Handicap Look-up Charts.

New daily handicap formula = (GA Handicap x (Slope Rating ÷ 113) + (Scratch Rating minus Par)) x 0.93.

Example

A player's GA Handicap is 15.2; Slope 124; Scratch Rating 72; Par 70.

The WHS Daily Handicap is:

Apply the Slope Rating to the GA Handicap: $15.2 \times (124 \div 113) = 16.68$
Add the difference between Scratch Rating and Par: $+ (72 - 70) = 18.68$
Apply the 0.93 Multiplier: $\times 0.93 = 17.37$
And then round the result to get the Daily Handicap: 17.37 rounds to 17

So if the player has 36 points off 17, they have played to their handicap.

Part C

What is new for Australia?

- 16 **Soft Cap of 3 strokes (to operate in conjunction with the Hard Cap – see Part A)**
 - A GA Handicap will continue to increase at the current rate of 100% of the '8 of 20 scores' calculation UNTIL it reaches 3 strokes above its best point from the previous 12 months. Once in this new Soft Cap zone, a player's GA Handicap will only be allowed to increase by 50% of the calculated amount.

Example
A player's '8 of 20 scores' calculation is 17.2, but their best GA Handicap from the previous 12 months is 11.2, which is 6 strokes less.

Their GA Handicap calculation becomes 11.2 + 3 + (50% of 3) to equal 15.7.

 - Statistical modelling indicates that the Soft Cap will impact up to 20% of the total number of handicap calculations performed by GOLF Link each year. The introduction of the Soft Cap will reduce the percentage of players impacted by the Hard Cap from 5% down to less than 1.5%.
 - GA has been aware for some time that our pre-WHS handicap system produces a competitive advantage to the inconsistent player over the consistent player and we have been looking for a way to soften this outcome. The Soft Cap will improve this situation and will improve the equity of Australian handicapping.
- 17 **Bonus reduction for exceptional net score**
 - GOLF Link will apply an automatic additional reduction to a player's GA Handicap if they have an 'exceptional score'.
 - If the player's score is 7.0-9.9 strokes better than what their GA Handicap was at the time the round was played then GOLF Link will apply an automatic additional reduction of 1.0 strokes to their GA Handicap. If the player's score is at least 10.0 strokes better than what their GA Handicap was at the time the round was played, then GOLF Link will apply an automatic additional reduction of 2.0 strokes to their GA Handicap.
 - To establish whether a score is exceptional, GOLF Link will compare the player's GA Handicap at the time the round was played with the number in the 'Sloped Played To' column for that round. (The 'Sloped Played To' column is one of the columns that is displayed in a player's handicap record on www.golf.org.au.)

WORLD HANDICAP SYSTEM

