

WIGAN PEWTER

The following are examples from a number of makers over many years and give some idea of the Pewter made in Wigan that might still be found today. As quite a lot survives and there were very many pewterers it is clear that Wigan was a major source of supply within the UK and influential in design. This article shows unlidded mugs, lidded tankards and various plates. There are more plates from Wigan and some with interesting marks to be seen in the article showing the Pewterware held at Towneley Hall Museum Burnley Lancashire UK.

It is interesting to note that the views firstly expressed are often those of a published British collector and where qualified the view is also given by a collector specialising in Wigan and Bewdley.

Although these views conflict they are shown here to say that Regional Pewter (whatever region) is a subject worthy of specialist study and can be an absorbing interest. They also demonstrate that much suggested pre Imperial Pewter is simply not as old as many collectors have thought it to be. Whilst this can be confusing, nice pieces are still very scarce and very desirable to specialist collectors.

This article is not written by Jamie Ferguson.

Rare and Early Antique Pewter Tulip shaped Quart and Pint about 1770

The hallmarks to the left of the handle of the pint are most likely those shown in OPM 227 On the pint just about visible is the 1) CB 2) lion passant with 4) being perhaps a fleur de lys. The pot touch is clearly CB in a shield. This mug has a single waist fillet, sits on a convex foot has a deeper brownish polished pewter appearance. This stands over 4 ½” with a footrim of 3 ¾” and weighs over 1 lb. The rims need a little tlc. The Quart shows the same CB pot touch under a quality X the last hallmark is clearly a fleur de lys and all hallmarks have the small circles in the top corners. Otherwise the quart is much as the pint for condition though perhaps a more grey mid pewter patina.

This Quart stands over 6 “ with a footrim near 4 ½” and weighs over 1 lb 11ozs.

Information from a more knowledgeable Wigan collector relates that the Quart is actually by Christopher Banks (II or III) of Bewdley and it could date anywhere up to Imperial so a date of 1770 is unlikely.



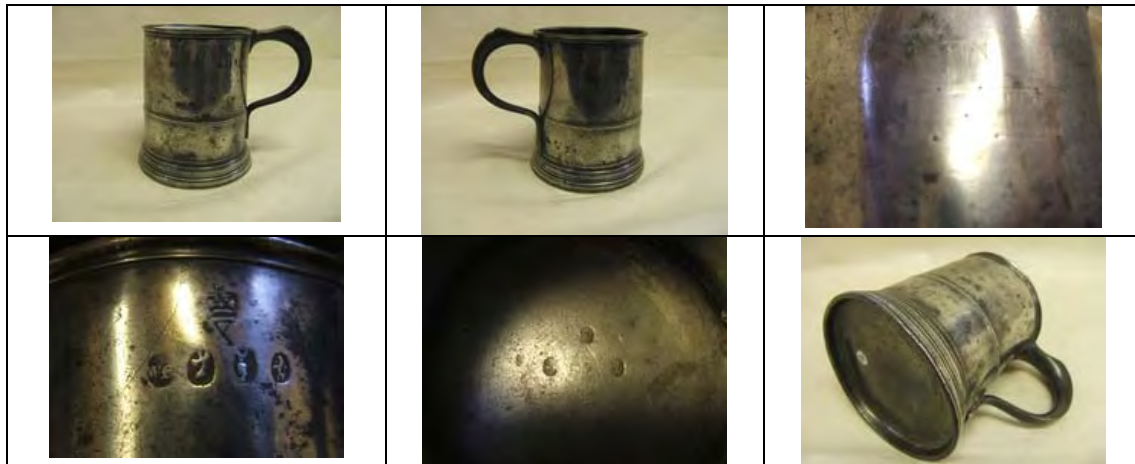
An Antique Pewter Half-Pint Wigan Mug from the period 1750 –1800.

Lovely condition and colour probably only used privately, plain truncated cone with interesting foot and clear turning rings under base. Engraved to the front the owners initials. Good collector's piece. Stands 4 ½" with a footrim of 3 ¾" and weighs a good 13 ozs.

Information from a more knowledgeable Wigan collector relates that this could be a 3 gills made 1790-1820 so the capacity needs to be rechecked.



Wigan Pewter Pint Mug by William Boulton Three pot touches in the base one a WB the other two being lion rampant along with a full set of the recognised four hall marks to the left of the handle under a crowned X quality mark. Naïve inscription for owner's initials of T over J E to the front typical Wigan style of footrim and a nice colour. Weighs about 1 lb stands just under 4 ½" tall with a footrim of just under 4". A nice well used piece of Wigan history.



Pre Imperial Wigan ½ Pint Pewter Mug.

Hall marks for B & W and three pot touches one the B & W the other two lions rampant. Crisp crowned X over the hall marks. Lip rim and footrim a little misshapen but otherwise in very good order with a nice colour and signs of very little use. Bolton & Wylde used this distinctive crowned X mark and the scattered pot touches in the base in their early pre imperial mugs – post imperial usually found bearing an Imperial stamp which is not seen here. So a nice collectors truncated plain cone style mug weighing just over 8 ozs standing just under 3 ¾” tall with a footrim just over 3”

Information from a more knowledgeable Wigan collector relates that this is likely to be made in the five year period straddling Imperial Measures being introduced so perhaps say 1820-1830.



Half Pint Wigan Pewter Mug c1830

Good half pint example of the work of Bolton and Wylde of Wigan Plain body no decorative band typical of B & W. Minor cracks to upper handle but otherwise in fine condition. This firm succeeding to a long line of noted Wigan braziers was created in 1822 and lasted until about 1836. In the quaintly named Pepper Mill near by the River Douglas. Has a verification of WR over LN for the Lancashire District of Lonsdale (North of the Sands) stamped to the front with the sort of firmness and regularity that suggests the maker put it there. Bears the stamp of Imperial to the front making this perhaps about 1830. An interesting piece in good condition. 3 ¾" height 2 ½" diameter at the rim and weighing about 10ozs



Antique Wigan Pewter Mugs – a group of three Mugs with interesting features.

The Quart is in excellent condition with the B & W hallmarks to the left of the handle and the Imperial label to the front, also a crowned quality X in the base. Truncated cone style with one fillet just above attention terminal to handle. Nice turning marks to the underfoot. Attractive multi filleted convex foot. This stands 6" tall with a footrim of just over 5" and weighs about 1 lb 13 oz.

The Pint appears much as the quart but with the crowned quality X mark above the hallmarks, and no mark to the front. Interestingly the pot touch in three separate marks are WB with two lions rampant. This stands 4 ½" tall with a footrim of 4" and weighs over 15 ozs.

The Half-Pint is not in just as good a condition as there is the odd ding and the footrim and liprim would be better for a little TLC. Here interestingly on the underside of the base are the remains of the touchmark of George Bolton III and could be the less commonly seen of his two similar touchmarks. One might conclude that this could have been made around 1811. The quart could be around 1830 and the pint perhaps pre-imperial about 1820.

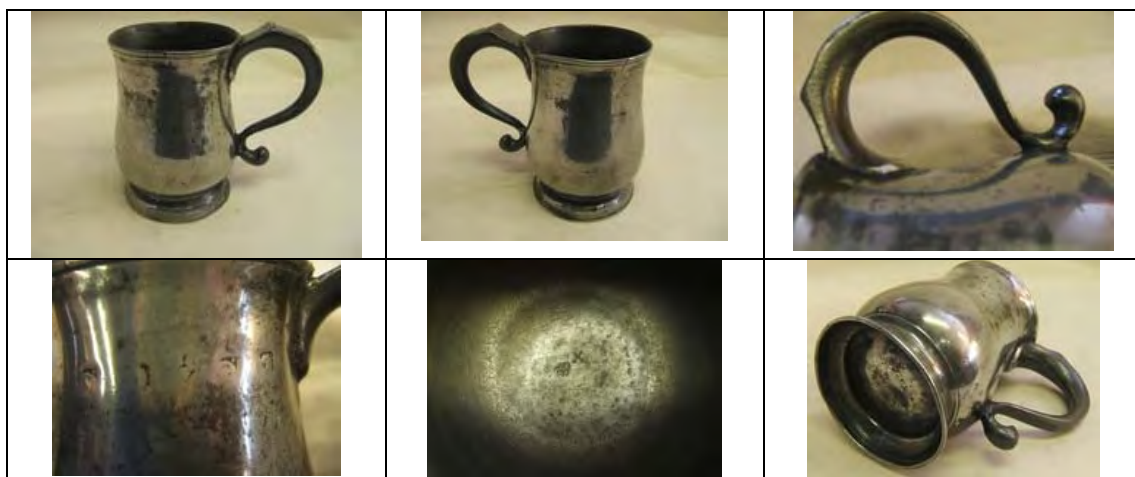
This half pint weighs over 9 ozs, stands 3 ½" tall with a footrim of 3 1/8".





Rare Antique Wigan Early Pewter Mug – scarce capacity of 3 ale gills and early marks. The hallmarks to the left of the handle are ‘buckle unicorn (perhaps two initials) buckle unicorn. The pot touch under the X that remains is the ‘buckle’ Cotterell refers us to OPM213 for a William Baldwin? from the early 18th C. The mug is a tulip shape plain bodied with interesting ball terminal handle. Nice convex foot, the handle may have been repaired and there is a nick to the lip rim. But likely a very early Wigan Mug. Definitely a collector’s piece. This stands 4 ½” tall with a 3 ¼” footrim and weighs over 13 ozs.

Information from a more knowledgeable Wigan collector relates that this piece has (which is unfortunately not shown here) an interesting squared off oozy tongue to the handle thumbpiece and is more likely from around 1810.



Half pint footed Pewter cup, with strap handle c1830 – Bolton & Wylde, Wigan

Excellent condition with original surface finish. B&W hallmarks to right of handle, and typical Wigan 'IMPERIAL' capacity label struck to centre front of body. This stands 4 ¼" weighs about 8 ozs has a footrim diameter of nearly 2 ½" and a rim diameter of 3 ¼"



Wigan Pewter Pint c1830 – well marked

A well made Pewter Pint Mug from Wigan. An interesting cup shape with a strap handle and the very clear and well-defined hall marks of Bolton & Wylde. This firm succeeding to a long line of noted Wigan braziers was created in 1822 and lasted until about 1836. In the quaintly named Pepper Mill near by the River Douglas. Bears the stamp of Imperial to the front making this perhaps about 1830. An interesting piece in good condition. 5 ½" tall 4" diameter at the rim and weighing just over 1 lb 7 1/2 ozs.



Very early Pewter Mug probably Wigan c1730

Squat shape, single low band and platform foot indicates early Wigan characteristics. Single curve hooded ball terminal handle with tongued thumbrest – the pointed form to the thumbrest, pointed shape to top of ball hood, sweeping high upper part joining mug on downward slope all also suggest an early shape. No makers or other marks. Capacity of 34 fluid ounces (just over wine standard quart of William 111, height of very nearly 5 ½” rim diameter of 3 7/8” footrim diameter of about 4 5/8”, depth of footrim (table to bottom of mug is ½” and it has a weight of just over 1 lb 7 1/2 ozs, fine medium colour, two repairs one to junction of body and footrim that is probably 20th C and much older repair to body nearly opposite the handle. An exceptionally rare early mug.



Wigan Quart footed tulip with double scroll handle This stands 6 ½” tall and weighs 862 gms. Verifications of a crowned Wr over BL for Blackburn and hallmarks of four lions passant plus a George IVth verification with orb with castle inside. 1170 ml or 41 fl ozs a quart? Likely made by George Bolton III of Wigan. Note - the unnecessary later addition of 4 fake hall marks, clearly intended to extra enhance value.



Wigan Quart with four hall marks to the left of the handle on a truncated cone with a low single fillet. Marked likely GB for George Bolton and including a set of three small punched marks in the base as a pot touch. This stands 6” tall and weighs 702 gms.



Wigan three gills

truncated cone plain bodied with deep foot and scarce if repaired double scroll handle carrying the four hall marks probably of GB with remains of the three punched marks inside central base that was the touch mark. This stands 4 ½” and weighs 362 grams. This holds just 400ml or 14 fluid ounces.



Wigan half pint bellied mug

carrying but two hall marks to the left of the handle one says B& W for Bolton & Wylde standing 3 ¾” tall and weighing but about 300gms.





Pint Pewter Mug with famed Hunting Scene Hall Marks to the left of the handle.

One dog, then two, then one, then a rabbit or hare. Nice plain bodied tulip mug with ball terminal to the lower handle. Stands table to rim at 4 3/4" and weighing 482 grams and holding an Imperial pint. The pot touch is that of the curved London over a crown mark of Pitt & Dadley or their successors. The marks of Pewterers Pitt in London alone and in various partnerships did include a dog, from 1769 onwards. With this being Imperial the chances are it was made much later – however the handle has been identified as being a Wigan handle made perhaps by successors to Bolton & Wylde or whoever took on their moulds. The subject of the marks is likely hare coursing which would fit with Wigan. Another possibility considered is a Hunt who was a pewterer in Newcastle. Wigan likely comes out most probable and the pot touch of the arched London over the Crown is very distinctive.

Information from a more knowledgeable Wigan collector relates that all of the 'hunting man' pieces are likely Wigan of 1810-1820



THOMAS LEATHERBARROW WIGAN LIDDED TANKARD

This is possibly the earliest recorded tulip tankard recorded yet by T L = Thomas Leatherbarrow of Wigan. The spade terminal ended in 1725 so this is likely to predate that. It has an interesting beehive wedge on the thumbpiece so say c1685-1725.

Another almost identical produced by W Baldwin of Wigan c1679-1753 is shown in The Journal of The Pewter Society in 2001.

This stands 8 ½” maximum height with a footrim diameter of over 4 ½” and weighs 730 gms (about 1 lb 10 ozs)

Information from a more knowledgeable Wigan collector relates that he has one of these also and he considers these to be made in the period 1750-1760.



A RARE FLAT LID TANKARD c1700.

The straight sided body with two broad bands of reeding and convex footrim S shaped handle in single curve, a stepped flat lid with pip at the front and double C thumbpiece. Toucmark of CB inside the base. Handle reattached hinge pin replaced, height 7 1/8” deepish footrim diameter 4 ½” and weighing 654 gms (1lb 7 ozs). CB is on the Pewter Society database as a Wigan mark. Perhaps Christopher Baldwin whose will was proved at Chester in 1725

Ex Shemmell Collection





An English Pewter Flat-lidded so called York Flagon circa 1690

With two bands of faint engraving at the top and bottom of the body, fretted denticulation to stepped over cover heart and spray thumbpiece an indistinct touch possibly by the maker W B inside the base

11 1/8" (28.2cm) overall height weighs just over 1700 grams.

Cooper Collection
 Buckell Collection
 Little Collection (lot 110)

Similar Worshipful Company Collection no 140 fig 20c – again in the supplementary catalogue no 212 p 38. Attributes this style specifically to York makers – but this mark is undoubtedly a WB and whereas there is a wide selection of Wigan pewterers with these initials there are no York ones. Hence the strong suggestion that this is a Wigan style made in Wigan and later (not much later) copied in York.

Similar in the Frank Holt sale Oct 98 Phillips Chester lot 35 by Leonard Terry.





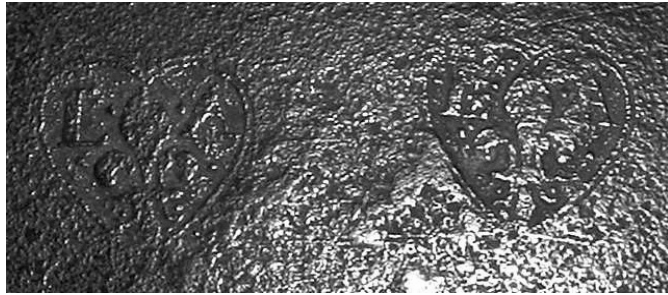
ENGLISH PEWTER FLAGON BEARING THE COMMON TOUCHMARK OF JOHN HARDMAN OF WIGAN AND THOMAS LEATHERBARROW, 1690-1730.

Of cylindrical form with reeded dome foot and S-scroll handle, the domed cover with "palm tree variant" thumbpiece, marked inside base. Height to lip 10 $\frac{5}{8}$ inches, base diameter 8 $\frac{3}{8}$ inches. This large base is said to have had particular application when on the sail ships of the time, lending great stability in inclement weather!

Narrow-rimmed plate by Lawrence Anderton of Wigan.

- shown elsewhere on this website

Perhaps one of the very nicest anywhere in this style



This lovely plate is 8 and eleven sixteenths inches in diameter with a rim width of half an inch. It is unusually shallow being only a quarter of an inch deep. There was a similar example by the same maker sold from the collection of Ronald Michaelis, Sotheby's 12th November 1973, lot no 38 and there is a superb flat-lidded tankard by Anderton in the collection of Colonial Williamsburg, number 238 in their catalogue. Pieces by this maker are very scarce.

There are two clear touchmarks struck on the back of the plate of the initials 'LA' either side of a fleur-de-lys within a heart. Most heart-shaped touchmarks were used either by West-country or Wigan pewterers and LA was thought to be from the South-west but is now recognized as being from Wigan (see the Pewter Society Database ID no 320). He appears in the records a number of times: - he contributed towards a gift for Charles II in 1661, was Warden of the Wigan Company of Pewterers in 1666, was Master of that Company in 1673 and 1684 and was Mayor of Wigan in 1685. Stylistically this plate probably dates towards the end of his career in the 1680's.

The plate is beautifully decorated with three wiggly-worked tulips within a border and there is a Greek key motif around the rim. Condition and colour are good.

Rare 18" Pewter Wigan wrigglework charger c1690 –

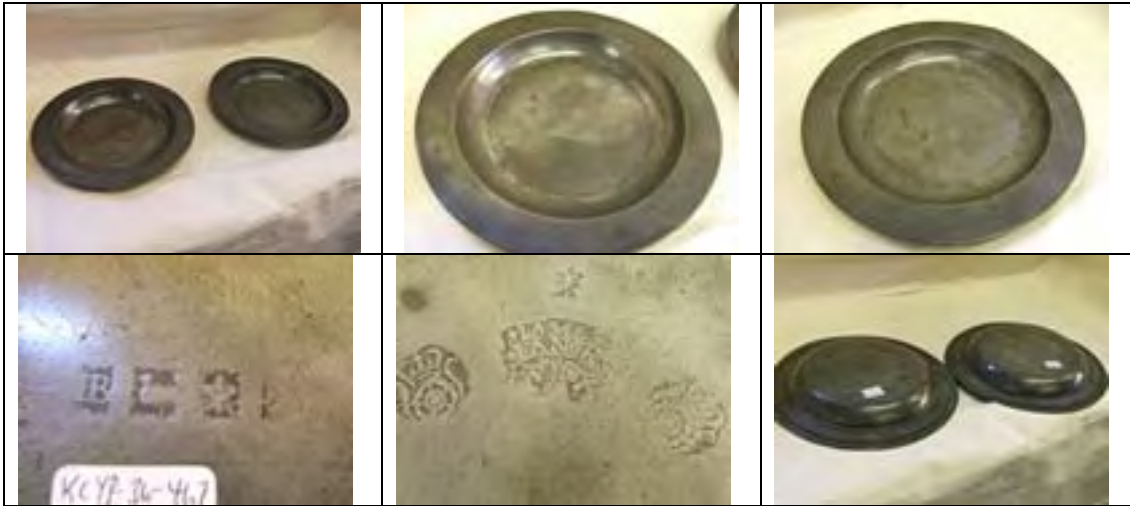
Robert Bancks, Wigan (OP232) Rare example of a large wriggled charger with unusual format of wrigglework design of foliage and tulip heads to rim, and single flower to centre of bowl. Well marked with Bancks' touchmarks to reverse and 5 hallmarks to front of rim. In good overall condition, with one nail hole in rim, and area of soldered repair to split in join between rim and bouge. Ex T Chapman, Halifax (UK) collection. The rim measures nearly 2 ¾" (making total rim as a % of plate diameter approx diameter say 28%) and the charger weighs 2lbs and 6ozs or 1kg 90gms about.



A PAIR of Wigan 9" Dishes by James Bancks Of Wigan

(OPM228) whose will was proved at Chester in 1775 suggesting these dishes might have been made about 1760. To the front a plain rim just over 1" and remains of the usual incised line to the bowl which whilst shallow is probably 1" deep. To the nicely hammered back are two crowned rose strikes with his named touch between a crowned X quality mark above and the remains of his hall marks below. Each dish weighs just about 1 lb. Probably spent all their time together so alike are both of these. A darker pewter patina; the rims a little wavy; and the odd small bump but otherwise in good condition for their age.

Reference KCYP-36-467 Photos 451-500 numbers 47 and 54 –58 collection



Triple Reeded Pewter Charger/Dish 16 7/8" by Christopher Baldwin of Wigan circa 1700

Four readable hallmarks of his initials repeated. A rare opportunity to see a well used Charger/dish of this age from a good and successful provincial Pewterer. Several very old repairs to the rim etc, very interesting boldly cast early reeding. Weighs about 3 lbs 5 ozs, which is not so heavy, full of character. Many knife marks and tiny pitting associated with spicy food in the 7/8" deep-dish base.

Reference: KOYP-00-243 Photos 209 - 212collection



Deep Pewter Charger triple reeded rim by W Baldwin of Wigan c1700

This 16 1/4" charger dish has a depth of close to 1 1/2" and weighs 1668 grams. The multi reed rim looks more incised than cast in, which reflects perhaps an earlier style though the rim is only 1 5/8" wide definitely made for a hearty meal to be served.

The four hall marks of buckle and unicorn head repeated are clear.



Charger Plate by I B likely of Wigan about 1690

and likely successor to Lawrence Anderton pewterer and Mayor of Wigan. This is a 16 ½” multi reeded Charger Plate/Dish. To the back are the marks of Lawrence Anderton and to the front an I (fleur de lys) B likely to be Lawrence Andertons successor or someone with his molds later. Successor because of the use of the fleur de lys as used by Anderton. Confusion abounds though because an alleged I Bancks & Co of Bewdley used 4 fleur de lys with in a shield as their touch. But likely this use was far later – maybe a Bancks followed Anderton and at some stage these Banckes moved to Bewdley? This Charger weighs 1644 grams.



CHARGER PLATE BY William Banck(e)s likely of Wigan.

This 16 ½” multi reeded Charger plate is in excellent condition it has his 4 hallmarks (WB and Dragon? Repeated) to the front and remains of his touchmarks and name label to the back. It weighs 1744 gms or about 4 lbs 13 ozs. It is from the same mold as is the Christopher Baldwin plate, size shape depth and reeding correspond exactly. This the W Bancks of OP240 working at the same time as Christopher Baldwin (sharing the same molds?)



CHARGER PLATE BY Christopher Baldwin of Wigan

whose will was proved at Chester in 1725. This 16 ½” multi reeded Charger plate is in excellent condition it has his 4 CB hallmarks to the front and remains of his touchmarks and name label to the back. It weighs 1744 gms or about 4 lbs 13 ozs. It is from the same mold as is the W Bancks plate, size shape depth and reeding correspond exactly. This is with the W Bancks of OP240 working at the same time (sharing the same molds?)

