



ARLEY HALL, WIGAN.



STANDISH CHURCH.



STANDISH HALL.



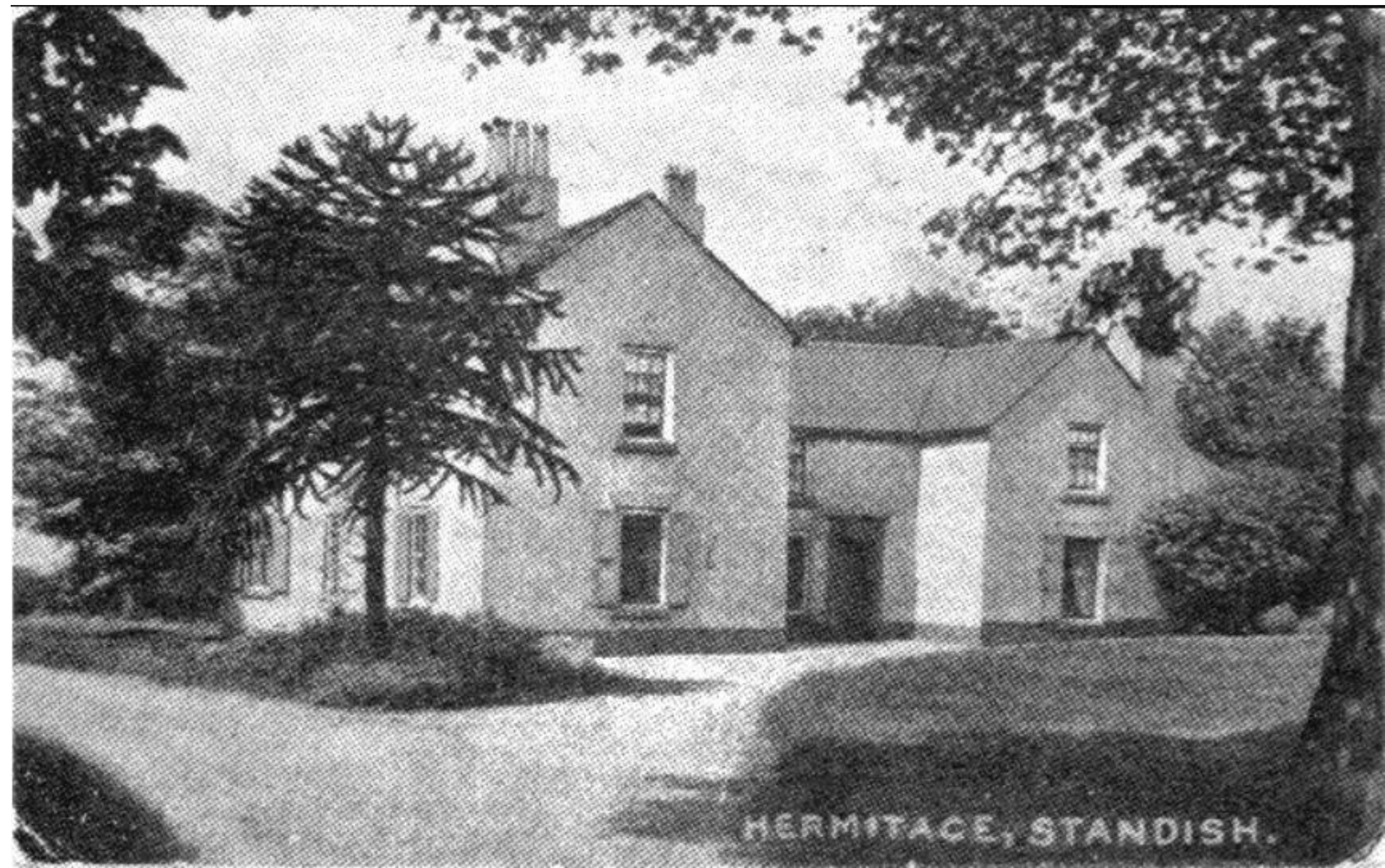
THE RECTORY, STANDISH.



BEECH DRIVE STANDISH



Beech Walk, Standish, circa 1910. The lodge to the right is Beech Lodge, which was the gatehouse for Standish estate.



HERMITAGE, STANDISH.



LARGE GATE STANDISH

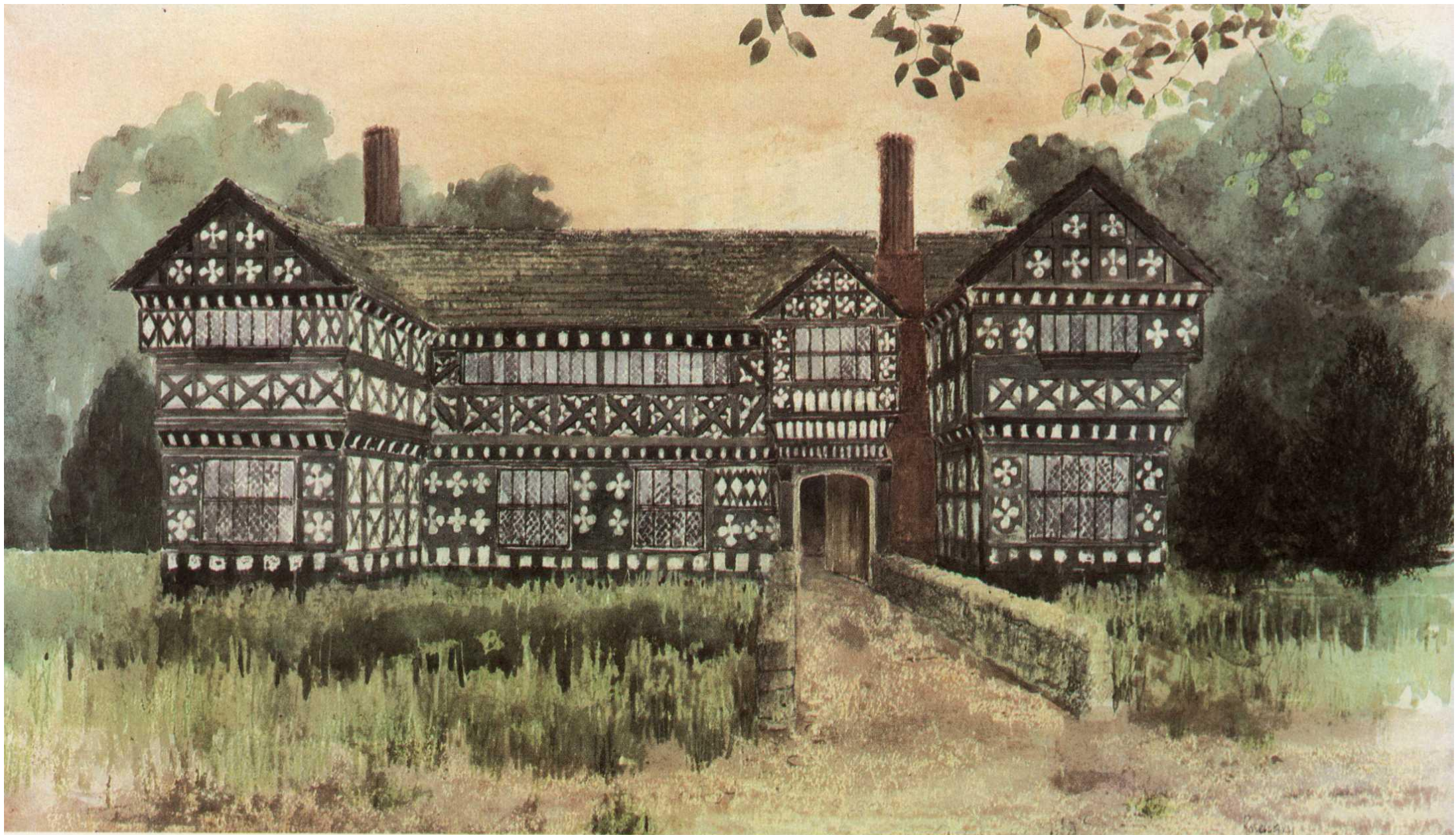






STANDISH HALL
BEYOND THIS POINT ARE THE DERELICT
REMAINS OF WHAT WAS THE ANCESTRAL
HOME OF THE STANDISH FAMILY.
THE ENTIRE ESTATE, INCLUDING THE HALL,
WAS OFFERED FOR SALE BY PUBLIC
AUCTION IN 1921 FOLLOWING THE DEATH
OF THE LAST MEMBER OF THE FAMILY.
STANDISH COMMUNITY FORUM





ARTIST'S IMPRESSION OF STANDISH HALL, *circa* 1574



STANDISH HALL, *circa* 1920

Reproduced by kind permission of Manchester Central Library.