

WHAT'S ON

WIGAN & LEIGH

JANUARY - APRIL 2025



PHOTO COURTESY OF LIVIA LIZAR



Wigan 
Council

WELCOME

Happy New Year, and welcome to an exciting new season of events in Wigan Borough!

This spring is filled with unmissable activities for all ages. Highlights include hands-on makers sessions at the Museum of Wigan Life, The Turnpike Gallery's OPEN 2025 exhibition, graveyard tours with Archives: Wigan & Leigh, historical fiction writing at Haigh and a chance to meet authors in our borough's libraries.

March also sees the return of French Week, as we celebrate our twinning with Angers with fun continental-inspired activities.

With so much to do, we're sure you'll find something to enjoy – we'll see you there!

To help you navigate our guide, look out for these icons:



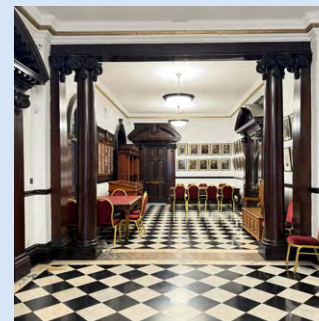
Family Fun



Exhibitions



Talks, Tours and Workshops



CONTENTS

French Week 2025

04

Museum of Wigan Life

06

The Turnpike Gallery

12

Archives: Wigan & Leigh

16

Libraries

22

Haigh Woodland Park

28

Get Involved

32

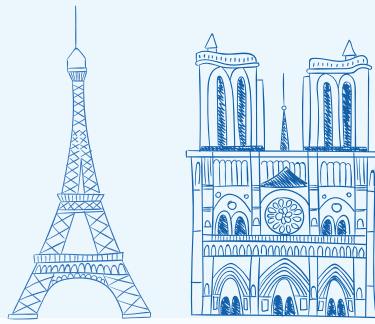
Listings

34

How to Find us

39

FRENCH WEEK



Here at Wigan Council, we're getting ready for French Week. To get us in the mood, we had a chat with our fantastic Ambassadors from our twin town of Angers, Lucie.

Please can you introduce yourself and your role?

My name is Lucie, and I am the Ambassador from Angers, Wigan's twin town in France. My role focuses on maintaining and strengthening the twinning links between Wigan and Angers, which have existed since 1988. This involves collaboration across sport, business, and education, as well as cultural initiatives like artistic residencies and concerts. I also welcome official delegations from Angers and organise events such as French Week.



Place du Ralliement

What does Twinning mean?

Twinning is a formal partnership between two towns from different countries, often sealed by a signed charter. The aim is to foster cultural, social, educational, and economic exchange. Over time, these towns build strong relationships and learn from one another, encouraging mutual understanding and the sharing of knowledge and customs.

What's been your favourite thing about being the Ambassador from Angers?

One of the most rewarding parts of my role is meeting wonderful people from both Wigan and Angers, from a variety of backgrounds: residents, children, officials, volunteers, community groups, businesses, and more. It's incredibly fulfilling to work with such a diverse range of individuals. I truly enjoy sharing the culture and traditions of my hometown and country with others.



Pont de Verdun

What do you look forward to when you have a trip to Wigan planned?

I always look forward to reconnecting with my friends and to seeing my colleagues in the UK, whom I miss when I'm away. And while it might sound surprising for a French person, I absolutely adore British cuisine! I miss a proper serving of fish and chips with mushy peas and vinegar, as well as the famous pies with gravy. I also look forward to a classic Sunday roast and, of course, afternoon tea, especially with a slice of Victoria Sponge, which is my favourite.



Vieille ville, vue du Chateau d'Angers

What kinds of things can we expect from French Week 2025?

I'm excited to share that the pétanque tournament will be making a return, so feel free to bring along your own set of pétanque boules. There will also be two language café sessions, and a variety of events for everyone in the borough from the **18 - 22 March 2025**. To stay updated on French Week and other twinning events, you can follow me on social media [@Ambassadors_from_Angers](https://www.instagram.com/Ambassadors_from_Angers).



View from the bridge - Pont de Verdun



Lucie

Museum of Wigan Life



Facilities & Accessibility

- Accessible toilet
- Ramped access
- Lift
- Assistance dogs welcome
- Hearing loop available
- Accessible parking nearby
- Baby changing facilities

museum
of WiganLife

In the heart of Wigan town centre, the Museum of Wigan Life and Wigan Local Studies resource library offer a fantastic opportunity for learning and discovery.

Explore our temporary exhibitions as well as newly revamped Ancient Worlds displays. You can also delve into your own family history and the local area in our beautiful local studies library. Our friendly staff are always on hand to help!

Entry to the museum and local studies is FREE

The Museum is closed to the public on Mondays, but open for our Soul Time group, see p7.

Address

41 Library Street, Wigan,
WN1 1NU

Opening Hours

Tuesday to Friday, 10am-4pm
Saturday, 10am-2pm

Contact

01942 828128
wiganmuseum@wigan.gov.uk
wigan.gov.uk/museum

Please note the Museum will be closed until Sat 15 Feb, to allow us to update What's in Store. Wigan Local Studies will open as usual.

Soul Time

Museum of Wigan Life
Every Mon from 20 Jan
(excludes bank holidays)
1-3pm
Free, drop-in

Join Manchester Camerata for Soul Time – a music and chat group for people living well with dementia and their families.



Photo courtesy of Manchester Camerata

Learn About Sound

Museum of Wigan Life
Tue 18 Feb
11-11.45am
Free, drop-in

Join neuroscientist Dr Alice Milne from Lancaster University to discover how our brains make sense of the world around us through the sounds we hear. There will even be a chance to test your auditory superpowers!



Photo courtesy of Aline Milne

What's in Store? Showcasing the Extraordinary to the Everyday

Museum of Wigan Life
Tue – Sat – From Sat 15 Feb
10am – 4pm Tue – Fri
10am – 2pm Sat
Free

Our interactive exhibition has been revamped for 2025 and has been packed with even more fascinating objects. From artwork and costume to heavy machinery, explore the racks to find treasures before telling us what Wigan means to you.



Photo courtesy of Nick Fairhurst

Chinese Themed Family Activities



Museum of Wigan Life
Thu 20 Feb
11am-1pm
Free, drop-in

Half term is packed full of family fun with traditional Chinese craft and costume. Try your hand at painting, calligraphy and paper cutting, and then get dressed up in traditional Chinese clothes.



Chinese New Year Celebrations



Museum of Wigan Life
Sat 22 Feb
10am-1.30pm
Free, drop-in

Join us for our annual Chinese New Year celebrations. Get crafty in the museum, watch a daring martial arts display in the Grand Arcade, and see the amazing lion dancers on the Market Place, before a grand finale at the museum.



Photo courtesy of St Mary's Confucius Classroom

Museum Minis



Museum of Wigan Life
Every Wed (term-time only)
from Wed 26 Feb
10.30-11.45am
£1.50 (inc Eventbrite booking fee), booking essential

Join us at the museum for a fun and relaxed session full of engaging songs, stories, and craft activities. Cost includes drink for minis and grownups. Suitable for age 0-5 years.



Photo courtesy of Livia Lazar

Sewing Machining for Complete Beginners



Museum of Wigan Life
Sat 1 Mar
10.30am-1.30pm
£15 (inc Eventbrite booking fee),
booking essential

Join us for a beginners' introduction into sewing: learn to thread a machine, do basic stitches, make a back stitch, and wind your bobbin up. Leave with new skills and something you've made. All materials and equipment provided.



Photo courtesy of Wigan Workshop CIC

'Fearless' Phillis Skinner, 1874-1950



Museum of Wigan Life
Fri 7 Mar
12-1pm
£3.50 (inc Eventbrite booking fee), booking essential

During WW1, Phillis Skinner appeared to be 'simply' a wife and a mother, but her life was filled with secrets. Both Phillis and her conscientious objector husband were briefly imprisoned and kept under surveillance by M15 from 1917 until WW2. Learn more about Fearless Phillis and her family, with an opportunity to study original documents.

What's in Store? Exhibition Tour



Museum of Wigan Life
Wed 5 Mar
12-12.45pm
Free, booking essential

Looking for something to do on your lunchbreak? Join our curators for our fascinating bi-monthly What's in Store exhibition tours and discover the history of some of the objects on display.



Photo courtesy of Nick Fairhurst

Collectors Showcase

Museum of Wigan Life
 Sat 15 Mar
 10.30am-1.30pm
 Free, drop-in

We are joined by local enthusiasts and their wonderful collections for this one-off event. Be wowed by amazing treasures and wonderful curiosities, all with a story to tell. Our experts will be on hand to discuss their displays.



Who Built Wigan's Churches?

Museum of Wigan Life
 Sat 29 Mar
 12-1pm
 £3.50 (inc Eventbrite booking fee), booking essential

Ever wondered who built Wigan's churches? Wonder no more as Will & Pat Sharp will bring to life the builders, designers, glassmakers, and funders across the Wigan Deanery. One not to miss!

SEND-Friendly Hour

Museum of Wigan Life
 Sat 22 Mar & Sat 26 Apr
 1-2pm
 Free, drop-in

Enjoy a relaxed and calming hour taking in the displays with no distractions. Sensory backpacks are available to use free of charge.

Sip and Paint

Museum of Wigan Life
 Thu 3 Apr
 6-8pm
 £15 (inc Eventbrite booking fee), booking essential

Based around the theme of 'Peace', you will be guided to create a unique Yin and Yang painting by Emma McEwan, art director at Let's SHAPE Our Creativity CIC.



Photo courtesy of Let's SHAPE Our Creativity CIC

Permanent Exhibition and Building Tour

Museum of Wigan Life
 Wed 9 Apr
 12-12.45pm
 Free, booking essential

Fancy something exciting to do during your lunch break? Join our curators for our bi-monthly permanent exhibition and building tour.



Photo courtesy of Nick Fairhurst

Easter Family Activities

Museum of Wigan Life
 Thu 17 Apr
 11am-1pm
 Free, booking essential

Bring your little chicks and bunnies for some crafty family fun as we celebrate springtime. Get stuck in with activities and trails, have your face painted, and then create your own Easter themed masterpiece to take home.

Half-term Family Activities

Museum of Wigan Life
 Thu 10 Apr
 11am-1pm
 Free, booking essential

Celebrate National Farm Animals Day with us! Have your face painted, solve our farmyard trail, get hands-on with animal themed crafts, and more! We would love to see your fancy dress.



Photo courtesy of Nick Fairhurst

To book, follow our QR code, call 01942 828128 or visit <https://www.wigan.gov.uk/MuseumArchivesEvents>



The Turnpike Gallery



Photo courtesy of Livia Lazar

Facilities & Accessibility

- Accessible toilet
- Ramped access
- Lift
- Baby changing facilities
- Assistance dogs welcome
- Accessible parking nearby



The Turnpike Gallery is an arts and exhibition space based in Leigh, offering cultural activity for all ages.

The gallery is based in the heart of Leigh town centre, neighbouring Leigh Town Hall on the Civic Square. You can find us on the top floor of the Turnpike Centre, above Leigh Library. The Turnpike Gallery offers an exciting visual arts programme, collaboration with our communities, platforming youth voices and nurturing new connections in the town of Leigh, the Wigan borough and beyond.

Entry to the gallery is FREE

Address

1st Floor Leigh Library, Civic Square, Leigh, WN7 1EB

Opening Hours

Tuesday to Friday, 10am - 4pm
Saturday, 10am - 2pm

Contact

01942 404469
theturnpikegallery@wigan.gov.uk
theturnpikegallery.org.uk

Home: Ukrainian Photography, UK Words

The Turnpike Gallery
30 Nov - 25 Jan
Closed 21 Dec - 4 Jan
10am-4pm Tue - Fri
10am-2pm Sat
Free, drop-in

Curated by Max Gorbatskyi and Viktoria Bavykina, this exhibition brings together diverse works from Ukrainian artists who offer distinct ways of seeing and thinking about 'home'. Presented by Open Eye Gallery, the exhibition has toured the northwest and Edinburgh, with a final display at UK Parliament planned for March 2025.

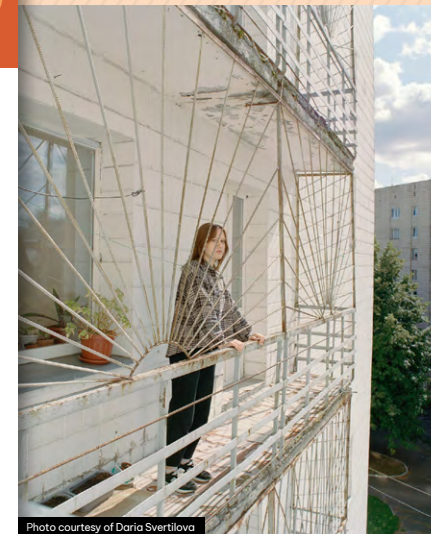


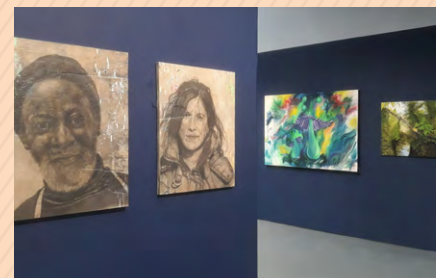
Photo courtesy of Daria Svrtliova

OPEN EYE GALLERY

OPEN 2025

The Turnpike Gallery
28 Feb - 19 Apr
10am-4pm Tue - Fri
10am-2pm Sat
Free, drop-in

The Turnpike Gallery's OPEN exhibition presents exciting new artwork by professional and amateur artists living or working in the borough. Enjoy a wide range of art and support the wealth of local talent from Leigh and Wigan.





Saturday Family Workshops



The Turnpike Gallery
1, 15, 29 Mar, 12 Apr
10.30am-12.30pm
Free, drop-in

Start your weekend with an inspiring creative workshop at The Turnpike Gallery. Suitable for families with children aged 5+.



Photo courtesy of Livia Lazar

February Half Term at The Turnpike



The Turnpike Gallery
18, 19, 20 Feb
11am-1pm
Free, booking essential

Fun and relaxing activities inspired by our contemporary exhibitions programme. Suitable for families with children aged 5+.



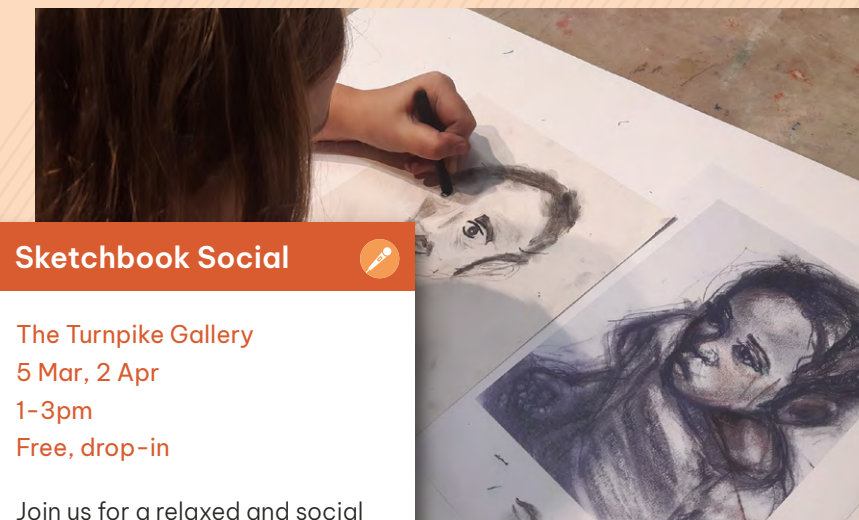
Photo courtesy of Livia Lazar

Turnpike Tots



The Turnpike Gallery
Every Thu from 16 Jan - 13 Mar,
term-time only
10.30-11.30am
Free, booking essential

Turnpike Tots is a creative play session for little artists aged 0-5 years and their grownups! Visit Wigan Council's Eventbrite page to book.



Sketchbook Social



The Turnpike Gallery
5 Mar, 2 Apr
1-3pm
Free, drop-in

Join us for a relaxed and social sketching session at The Turnpike Gallery. Enjoy a brew, mingle with other sketchers, and soak up inspiration from the OPEN exhibition.

For more information and to book; follow our QR code, visit www.theturnpikegallery.org.uk or call 01942 404469



Archives: Wigan & Leigh



Discover your local history and get involved in a range of activities and workshops for all ages at Archives: Wigan & Leigh, found inside the newly-renovated Grade II listed Leigh Town Hall.

The archives and local studies service collects, preserves, catalogues, and makes public thousands of records from schools, churches, hospitals, businesses, families, estates and people. Explore the new exhibition space and the state-of-the-art facilities, including a dedicated searchroom, conservation studio and strongrooms which store records dating back 800 years.

Entry to the archives and exhibition is FREE

Facilities & Accessibility

- Accessible toilet
- Ramped access
- Lift
- Accessible parking nearby
- Assistance dogs welcome

AML
ARCHIVES:
WIGAN&LEIGH

Address

Leigh Town Hall, Civic Square,
Leigh, WN7 1DY

Opening Hours

Tuesday to Friday, 10am-4pm,
closed from 1-1.30pm
Saturday, 10am-2pm

Contact

01942 404430
archives@wigan.gov.uk
archives.wigan.gov.uk



@archiveswiganleigh



@archiveswileigh



@archivewileigh

Archives: Wigan & Leigh Permanent Exhibition

Archives: Wigan & Leigh

Tue - Sat

10am - 4pm Tue - Fri,
closed from 1-1.30pm

10am - 2pm Sat

Free, drop-in

This amazing display of local stories, archives, and museum objects showcases the local history of the east side of the borough. Our team and volunteers are on hand to answer your questions and help you explore the collection!



Windows into History

Market Street, Leigh

Every day

Free

Come and learn more about local artists Helen Mather and Anna FC Smith, and The Bridgers Community Group in our dedicated window displays.



Catch-As-Catch-Can Wrestling



Archives: Wigan & Leigh
10am-4pm Tue – Fri
10am-2pm Sat
Free, drop-in

Did you know that Wigan was long known as a hot bed of wrestling? Discover the history of the unique Catch-as-Catch-Can wrestling style, and the stories of the fighters keeping the sport alive.

Relaxed Mornings



Archives: Wigan & Leigh
Last Sat of the month
10am- 12pm
Free, drop-in

This time is specially dedicated to visitors with special needs. It will be a SEND-friendly environment with limited visitor numbers, sensory resources to use during your visit and staff available to help with anything you need.

YouTube



View our previous talks and insights into our collections on our new **YouTube channel**.



Leigh Town Hall Tours



Archives: Wigan & Leigh
Last Wed of the month
11am-12.30pm
Free, booking essential

Discover the history of Leigh Town Hall and explore the Archives' collections on this free guided tour.



Let's Talk History



Archives: Wigan & Leigh
Various dates
£2 (inc Eventbrite booking fee),
booking essential

Archives: Wigan & Leigh in partnership with Leigh Family History Society are running monthly history talks.

Visit Wigan Council's Eventbrite page for more info.

Family Creative Making at the Archives



1 Feb, 8 Mar
11am-1pm
Free, booking essential

Join the Archives for a creative making session, using a range of materials and techniques. Each session is different.

Suitable for families with children aged 5+

Walking Tour of Astley Graveyard



Church Road, Astley
Thu 20 Feb
11am-12.30pm
£1.50 (inc Eventbrite booking fee), booking essential
Please check our web page for details.

Join us on a guided tour of the graveyard around the former site of St Stephen's Church to discover more about the fascinating lives of former residents of the area.



Photo courtesy of Archives: Wigan & Leigh



February Half Term at the Archives 

Fri 21 Feb
11am-1pm
Free, booking essential

Get ready this half-term for nature-inspired crafts inspired by our local history exhibition. Suitable for families with children aged 5+

Walking Tour of St Georges Church Graveyard in Tyldesley 

Tyldesley
Thu 27 Mar
11am- 12.30pm
‘£1.50 (inc Eventbrite booking fee), booking essential
Please check our web page for details.

Join us on a guided tour of the graveyard around St George’s Church to discover more about the fascinating lives of former residents of the area.

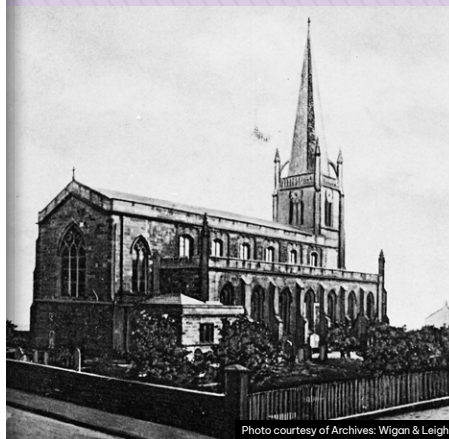


Photo courtesy of Archives: Wigan & Leigh



Family Creative Lab 

Archives: Wigan & Leigh
Sat 5 Apr
11.30am- 1.30pm
Free, booking essential

Come join us for a fun-filled workshop at the archives including a Leigh Town Hall tour and creative making inspired by history! Suitable for families with children aged 5+

SEND-Friendly Family Day 

Archives: Wigan & Leigh
Sat 5 Apr
10-11.30am
Free, booking essential

This is a one-to-one session specially designed for families who may prefer a calmer environment. There will be a relaxed tour of Leigh Town Hall and objects from the Archives to handle.

To book, follow our QR code, call 01942 404430 or visit <https://www.wigan.gov.uk/MuseumArchivesEvents>



Wigan Libraries



In our libraries you will receive a warm welcome from experienced staff, as well as the use of books, audio books, public PCs, and free Wi-Fi.

Free library membership is easy to set up and gives you access to all 15 of our libraries across the borough. With your membership card you can access free eBooks, eAudiobooks and eMagazines via the BorrowBox app. There is a wide range of regular activities for all ages as well as special events throughout the year. Pop in to discover a whole world of exploration, information, and creativity for FREE!

Facilities & Accessibility

All our libraries differ but all are DDA compliant. For information of facilities at particular branches please visit wigan.gov.uk/Resident/Libraries



Information

With branches based throughout the borough, for information on each branch, opening hours and to find your nearest library please visit wigan.gov.uk/Resident/Libraries



For more information and to join for free visit **e-books, audio books and e-magazines** (wigan.gov.uk)

World Book Day

6 Jan - 22 Feb

Celebrate World Book Day 2025 with children's book illustrator, Nicola Slater, and a boroughwide illustration competition open to everyone aged 4 - 16. Check our social media for details!



Photo courtesy of Nicola Slater

Antony Johnston Creative Writing

Leigh Library

Thu 6 Feb

6-8pm

£9.38 (including Eventbrite booking fee)

Join Antony Johnston, the author of The Dogstetter Detective series, as he talks about his own publishing story. Includes a Q&A session for all aspiring writers and a fish and chip supper.



Photo courtesy of Antony Johnston

Wild Workshops

Golborne and Wigan Libraries
Mon 17 Feb

Please check social media
£4.50 (including Eventbrite fee)

Wild Workshops are back! See minibeasts and small animals as you've never seen them before!



Children's Animal Illustration Workshops



Tyldesley and Leigh Libraries

Tyldesley Library - Mon 17 Feb

Leigh Library - Wed 19 Feb

10.30-11.30am

£4.50 (including Eventbrite fee)

Join Lisa at her workshop where she will introduce you to a range of different approaches to creating illustrations including painting, collage and polymer clay. For ages 5+.



Photo courtesy of Lisa Michelle Johnson



Photo courtesy of Lisa Michelle Johnson

Out of this World



Golborne Library

Sat 22 Feb

10.30am-12.00pm

Free, booking essential

Join children's author Dan Worsley and Daresbury Laboratory as they embark on an extra special, extraterrestrial storytelling journey with hands on science too. Perfect for age 7-11 years.



Easter Crafts



All libraries across the borough Throughout the Easter School Holidays

Please check social media

Free, drop-in

Pop into your local library over the Easter Holidays where you will find lots of Easter crafts for all the family. Keep checking social media for what's on near you.



Quiz Me Quick



Hindley Library and Community Centre

Every Fri

3.30-4.15pm

Free, drop-in

Expect quiz questions, word searches and mystery objects. Drop-in and put yourself to the test!



'Celebrities Incarcerated' with Brian Joyce



Leigh Library

Thu 24 Apr

6-8pm

£7.21 (including Eventbrite fee)

Pop and rock celebrities such as Paul McCartney and Jimi Hendrix sometimes found themselves in trouble with the authorities. Film stars like Robert Mitchum and Hugh Grant have also crossed paths with the police. Brian will look at those who have fallen foul of the law. Talk followed by a fish and chip supper.



Photo courtesy of Wigan Libraries

Recycled Spring Wreath Workshop

Wigan Library

Wed 9 April

10am-12pm

Free, drop-in

Create a unique Spring Wreath to take home, using a bicycle wheel and materials from our Recycling Centres! All materials will be provided. Perfect family activity to reuse and recycle with staff from FCC Environment.



Lego Clubs



Various Wigan Borough Libraries
Please check social media
Free, drop-in

Immerse yourself in the wonderful world of Lego at our free Lego Clubs. Let your creativity run wild! All ages welcome (under 9s must be accompanied by an adult).



Baby Rhyme Time



Lamberhead Green
and Golborne Libraries
Golborne Library Every Mon
9.30-10am

Lamberhead Green Library Every
Tue 11-11.45am Free, drop-in

Songs, rhymes, bubbles, stories
and lots of fun. From newborns to
dancing toddlers, all are welcome!



Learn to Knit



Atherton Library
Every Sat
10am - 12pm
Free, drop-in

Does your little one want to
learn how to knit? Have you
always wanted to knit but
don't know how? Join us at
Atherton Library's 'Learn To
Knit' group - free and open
to any age (under 9s must be
accompanied by an adult).



What's In Store? On Tour



Please check social media
Free, drop in

Discover objects relating to your
local area when the Museum
of Wigan Life's What's in Store
exhibition (p.7) comes to a library
near you! Can you visit them all?



Photo courtesy of Nick Fairhurst

The Village Art Gallery



Shevington Library
Mon - Wed 9am-2pm,
Thu-Fri 12-5pm
Sat 9am-2pm
Free, drop-in

Call in to The Village Art Gallery
at Shevington Library to see new
work by local artists. Exhibitions
change throughout the year so
there is always something new
to experience.

Wigan Library Public Living Room



Wigan Library
Mon - Sat
10am - 4pm Mon - Fri
9am - 2pm Sat
Free, drop-in

Spend some time in Wigan
Library's Public Living Room.
Whether you fancy playing a
board game, reading a book or
would just like to shelter from the
cold for a little while, please feel
free to use our warm, safe space.



For more events in Wigan Libraries, and to book, follow our
QR code or visit <https://www.wigan.gov.uk/LibrariesEvents>

Haigh Woodland Park



Facilities & Accessibility

On-site parking. All activities in Kitchen Courtyard classroom, shops and cafes are accessible for wheelchair users. Lift access to the first floor of the Stables building. 16 dedicated accessible parking spaces, 4 wheelchair-friendly picnic tables and 2 accessible toilets, including one with hoist/wet room.

Some pathways on the park are accessible for wheelchair users. Other pathways are uneven under foot or inclined. Contact us for access information related to guided walks.

Discover a world of adventure, enchanting woods, tasty eateries, golf of all kinds, family-friendly activities and events for all ages. Activities are based inside the Classroom, or in the great outdoors.



**Haigh
Woodland
Park**

Address

Haigh Woodland Park, School Lane, Wigan WN2 1PE

Visitor Centre Opening Times:

Autumn/Winter 8am-5pm

Contact

01942 828280
info@haighwoodlandpark.co.uk

Winter Wakening- Lino Printing Workshop

Stables Classroom

Sat 18 Jan

10.30am-12.30pm

£15 (plus Eventbrite booking fee), booking essential

Take inspiration from nature. Make card designs, gifts for loved ones, or something special for yourself with talented artist Emma Saunders. All materials included.



Photo courtesy of Emma Saunders



Photo courtesy of Cathi Rae

Poetry Workshop with Cathi Rae

Stables Classroom

Sun 9 Feb

1-2.30pm

£3 (plus Eventbrite booking fee), booking essential

Join poet, body positivity model and campaigner against ageism, Cathi Rae. We'll explore how to tell other people's stories through poetry. Suitable for beginners.

The River and The Fool - History Walk

Plantation Gates

Sun 2 Mar

10.30am-12pm

£3 (plus Eventbrite booking fee),
booking essential

Artist and researcher Anna FC Smith takes you on an uncanny journey through history and folklore connected to Haigh and the River Douglas. The walk draws together facts and myths, linking Wigan's last fool, Thomas Skelton and his mischievous last Will and Testament with stories of boggarts, bones and polluted waters.



Photo courtesy of Anna FC Smith

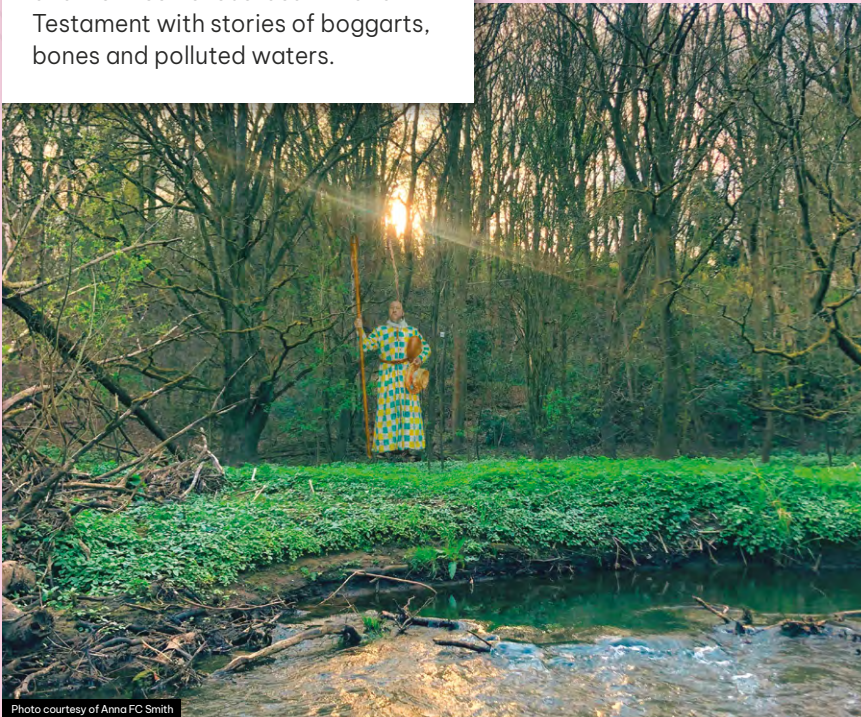


Photo courtesy of Anna FC Smith

Historical Fiction Writing Workshop with Julie McKiernan

Stables Classroom

Sun 2 Mar

1-2.30pm

£3 (plus Eventbrite booking fee),
booking essential

Historian and writer, Julie McKiernan shares the story of the Fool of Muncaster and invites us to write historical fiction inspired by true stories.



Photo courtesy of University of Birmingham

Boggarts and Beasties - Children's Drama Workshop

Stables Classroom

Sun 13 Apr

10.30am-12pm

£5 per child (plus Eventbrite booking fee),
booking essential

Join Lisa Lundie for drama games and fun! We'll be creating scenes exploring boggarts, beasties and mermaids. Suitable for ages 7-11.



Photo courtesy of Lisa Lundie

To book, follow our QR code, call 01942 828280 or visit
<https://www.haighwoodlandpark.co.uk/events>.



Get Involved (all venues)

Reminiscence Workshops

Archives: Wigan & Leigh have a range of reminiscence workshops specifically designed to support people with dementia. To book a session or find out more, you can contact the Archives team at archives@wigan.gov.uk

Secondary School Careers Day

Archives: Wigan & Leigh Slots available on Request Have you ever wondered what life as an archivist is like? How to get into a heritage career? Our team are always happy to speak to your class about their experiences in the sector, just email us at archives@wigan.gov.uk

Past Forward Magazine

We're looking for new articles relating to the history of our borough for our next edition of Past Forward! Articles can be up to 1000 words and include images. Past Forward sells for £2.00 at cultural venues across the borough. Submit articles to pastforward@wigan.gov.uk

Volunteering Opportunities

All venues We are always looking for new people to join our volunteer teams and have a range of opportunities available. To find out more, email the venue you're interested in volunteering at or pop in for a chat!

Shop Windows into History

Archives: Wigan & Leigh

The Leigh Town Hall shop window displays change regularly and feature a range of local history and work from local heritage groups and artists. If you or your community group want to get involved for our displays in 2025 email us at archives@wigan.gov.uk



Turnpike Youth Collective

The Turnpike Gallery Every other Thursday 6-8pm, please check Eventbrite for upcoming sessions

Turnpike Youth Collective is a free creative community for young people from Wigan & Leigh. If you're aged 16-25 and would like to get involved in events, exhibitions and creative activities at The Turnpike Gallery, come join us!

Wigan Borough cultural activities survey

Wigan Council are developing plans for our 2025-27 cultural programme and want your input to ensure what we plan meets your interests. Help us to shape our community focused programme **here**.



Listings

At a Glance Jan – Apr 2025

Exhibitions

When	Event	Page	Where
Every Day	Windows into History	17	Market Street, Leigh
Mon – Sat	What's in Store? On Tour	27	Various Libraries
Mon – Sat	The Village Art Gallery	27	Shevington Library
Tue – Sat	Archives: Wigan & Leigh Permanent Exhibition	17	Archives: Wigan & Leigh
Tue – Sat	Catch as Catch Can Wrestling	18	Archives: Wigan & Leigh
Tue – Sat 30 Nov – 25 Jan	Home: Ukrainian Photography, UK Words	13	The Turnpike Gallery
Tue – Sat from 15 Feb	What's in Store? Showcasing the Extraordinary to the Everyday	7	Museum of Wigan Life
Tue – Sat 28 Feb – 29 Apr	OPEN 2025	13	The Turnpike Gallery

January

When	Event	Page	Where
18	Winter Wakening- Lino Printing Workshop	29	Haigh Woodland Park
25	Relaxed Mornings	18	Archives: Wigan & Leigh
29	Leigh Town Hall Tours	18	Archives: Wigan & Leigh

February

When	Event	Page	Where
1	Family Creative Making at the Archives	19	Archives: Wigan & Leigh
6	Antony Johnston Creative Writing	23	Leigh Library
9	Poetry Workshop with Cathi Rae	29	Haigh Woodland Park
18–20	February Half Term at The Turnpike	14	The Turnpike Gallery
17	Wild Workshops	23	Golborne & Wigan Libraries
17	Children's Animal Illustration Workshop	24	Tyldesley Library
18	Learn About Sound	7	Museum of Wigan Life
19	Children's Animal Illustration Workshops	24	Leigh Library
20	Chinese Themed Family Activities	8	Museum of Wigan Life
20	Walking Tour of Astley Graveyard	19	Church Road, Astley
21	February Half Term at the Archives	20	Archives: Wigan & Leigh
22	Chinese New Year Celebrations	8	Museum of Wigan Life
22	Relaxed Mornings	18	Archives: Wigan & Leigh
22	Out of this World	24	Golborne Library
26	Leigh Town Hall Tours	18	Archives: Wigan & Leigh

March

When	Event	Page	Where
1	Saturday Family Workshops	14	The Turnpike Gallery
1	Sewing Machining for Complete Beginners	9	Museum of Wigan Life
2	The River and The Fool - History Walk	30	Haigh Woodland Park
2	Historical Fiction Writing Workshop with Julie McKiernan	31	Haigh Woodland Park
5	Sketchbook Social	15	The Turnpike Gallery
5	What's In Store? Exhibition Tour	9	Museum of Wigan Life
7	'Fearless' Phillis Skinner, 1874-1950	9	Museum of Wigan Life
15	Saturday Family Workshops	14	The Turnpike Gallery
15	Collectors Showcase	10	Museum of Wigan Life
18-22	French Week	4-5	Various Venues
22	SEND-Friendly Hour	10	Museum of Wigan Life
26	Leigh Town Hall Tours	18	Archives: Wigan & Leigh
27	Walking Tour of St Georges Church Graveyard in Tyldesley	20	Tyldesley
29	Saturday Family Workshops	14	The Turnpike Gallery
29	Who Built Wigan's Churches?	10	Museum of Wigan Life
29	Relaxed Mornings	18	Archives: Wigan & Leigh

April

When	Event	Page	Where
2	Sketchbook Social	15	The Turnpike Gallery
3	Sip and Paint	10	Museum of Wigan Life
5	Family Creative Lab	21	Archives: Wigan & Leigh
5	SEND-Friendly Family Day	21	Archives: Wigan & Leigh
9	Permanent Exhibition and Building Tour	11	Museum of Wigan Life
9	Recycle Wreath Workshop	25	Wigan Library
10	Half-term Family Activities	11	Museum of Wigan Life
12	Saturday Family Workshops	14	The Turnpike Gallery
13	Boggarts and Beasties - Children's Drama Workshop	31	Haigh Woodland Park
17	Easter Family Activities	11	Museum of Wigan Life
24	Celebrities Incarcerated with Brian Groom	25	Leigh Library
26	SEND-Friendly Hour	11	Museum of Wigan Life
26	Relaxed Mornings	18	Archives: Wigan & Leigh
30	Leigh Town Hall Tours	18	Archives Wigan & Leigh

Recurring events

When	Event	Page	Where
Every Mon	Baby Rhyme Time	26	Golborne Library
Every Mon from 20 Jan	Soul Time	7	Museum of Wigan Life
Every Tue	Baby Rhyme Time	26	Lamberhead Green Library
Every Wed from 26 Feb	Museum Minis	8	Museum of Wigan Life
Every Thu from 16 Jan - 13 Mar, term-time only	Turnpike Tots	14	The Turnpike Gallery
Every Fri	Quiz Me Quick	25	Hindley Library
Every Sat	Learn To Knit	26	Atherton Library



Photo courtesy of Livia Lazar



Photo courtesy of Livia Lazar

How to find us

Museum of Wigan Life and Wigan Library:

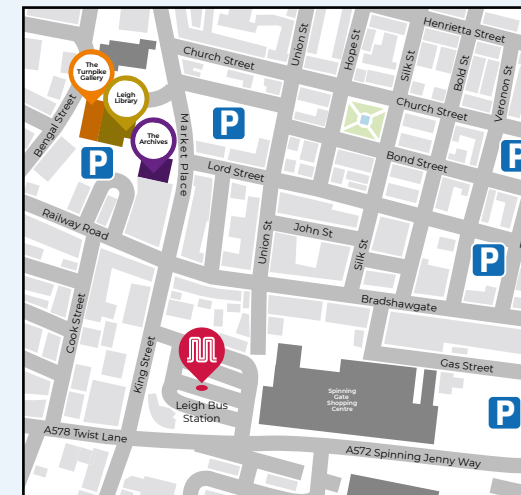
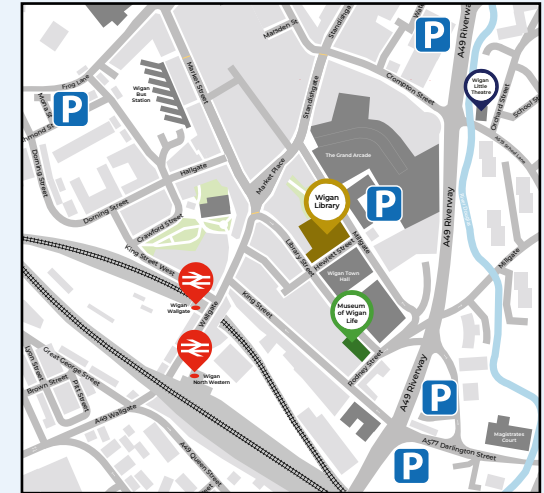
If you're using public transport, we are just a 4 minute (0.2 miles) walk away from Wigan Wallgate rail station.

A 5 minute (0.3 miles) walk from Wigan North Western rail station.

A 7 minute (0.4 miles) walk from Wigan bus station.

or

If you're driving, Rodney Street car park is only a minute away.



Turnpike Gallery, Archives: Wigan & Leigh and Leigh Library:

Leigh Civic Square is home to both The Turnpike Gallery and the Archives.

It's just a 4 minute (0.2 miles) walk away from Leigh bus station.

or

If you're driving, the Town Hall Surface car park is only a minute away.

[Click here for info on all of our libraries](#)

WHAT'S ON

WIGAN & LEIGH



Wigan
Council

museum
of WiganLife



AML
ARCHIVES:
WIGAN & LEIGH



Wigan
Libraries



Photo courtesy of Livia Lazar



Made possible with

Heritage
Fund



Supported using public funding by

ARTS COUNCIL
ENGLAND