



OPTION 02 VISUALS; not to scale

SPORTS PAVILION:

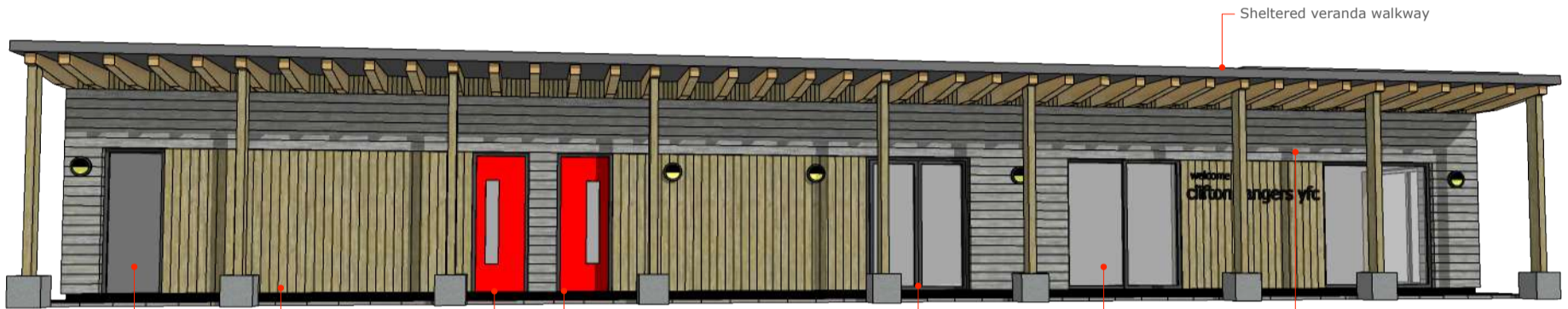
A permanent formal building that aims to combine efficiency & practicality with durability & quality in providing the club with much needed ancillary facilities. Core concepts of the design include high levels of environmental performance, low level impact & a robust solution that meets the club's requirements & needs.

By increasing external wall thickness to 450mm using insulated concrete there is a large thermal mass whilst giving an anti-vandal structure & finish. The simple rectangular form also minimises volume to surface area ratio & thereby assists with preventing heat loss. A flat sedum roof supported by FSC timber beams & columns spans the whole structure & assists with rainwater attenuation as well as providing some level of habitat for insects.

Timber cladding is incorporated in key areas to break the mass of the building & soften the aesthetics, linking to the trees nearby. The concrete is shuttered with timber giving the textured grain of the wood & once again improving aesthetics. Grey uPVC double glazed window & door units give a modern, contemporary finish.

Photovoltaics are also shown in position on the roof & can assist in providing electrical energy, whilst it could be possible to use a ground/air source heat pump.

The building aims to be simple, cost effective & efficient, legible, modern, low impact & effective.



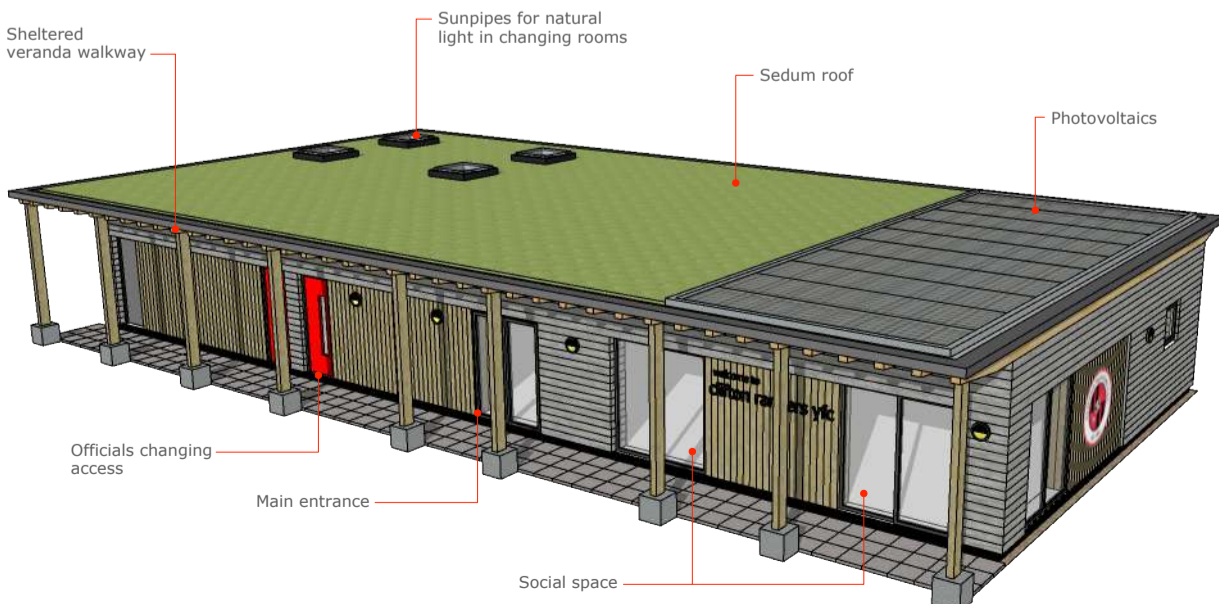
TIMBER SHUTTERED CONCRETE



VERTICAL TIMBER CLADDING



Extensive glazing to allow views of pitch beyond
 Club branding clearly visible
 Office window overlooks site entrance for natural surveillance



TIMBER STRUCTURE BEAMS



SEDUM ROOF EXAMPLE