



THE *FUTURE* OF TECHNOLOGY AND INNOVATION *AVAILABLE TODAY*

EUROXWAY SRL (s.u.) Office: Viale della Repubblica 7/C - 42024 Castelnovo di Sotto (RE) Italy

Part. IVA - Cod. Fiscale (VAT/TVA): IT 01546560358 - Office Phone: +39 0522 682548 - www.euroxway.com - Mail: admin@euroxway.it
Data, and specifications in this catalog are subject to change without notice

LAST UPDATE: 03/2024



EUROXWAY® SRL

EUROXWAY SRL WAS BORN AS A SPECIALIZED COMPANY IN SELLING “*CUSTOMIZED EQUIPMENT FOR CREMATORIA*” IN EUROPE, SUCH AS COFFIN AUTOLOADER, TROLLEY TRANSPORTER, ASH PROCESSOR, SUCTION BENCHES (ALL BUILT IN FULL COMPLIANCE WITH C.E. REGULATIONS) AND THE PATENTED **SECURCEN®** RADIO-CONTROLLED SYSTEM DESIGNED FOR THE DECEASED TRACEABILITY, FROM THE MORGUE TO THE CEMETERY.

EUROXWAY CAN PROVIDE SERVICES BASED ON CUSTOMER’S NEEDS.

TO GUARANTEE A COMPLETE SERVICE TO OUR CUSTOMERS, WE ALSO PROVIDE TECHNICAL TRAINING UPON REQUEST, TO RESPECTFULLY USE OUR EQUIPMENT DURING FUNERALS FRONT TO FAMILIES.

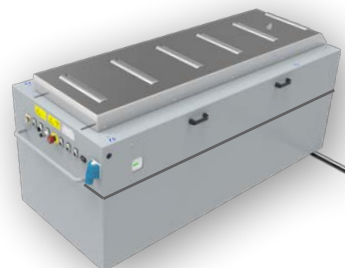
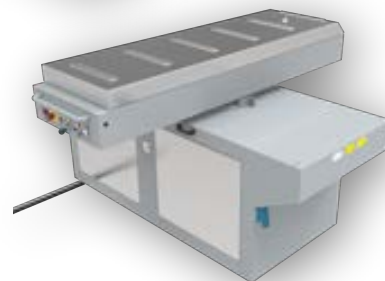
- **EXW SECURCEN® 2.0** - PATENTED RADIO-CONTROLLED SYSTEM, DESIGNED FOR THE DECEASED TRACEABILITY FROM THE MORGUE TO THE CEMETERY, WORKING WITH RFID TECHNOLOGY.
- **EXW AUTOLOADER** - FULLY AUTOMATIC LOADER OF SMALL DIMENSIONS TO EASILY LOAD COFFINS, TAILOR-MADE ACCORDING TO THE NEEDS OF EACH CUSTOMER.
- **EXW TROLLEY** - TROLLEY FOR THE COFFINS TRANSPORT INSIDE OF THE CREMATORIUM, BUILT IN FULL COMPLIANCE WITH C.E. REGULATIONS.
- **EXW URNS** - WIDE SELECTION OF LUXURY URNS, ALL HANDMADE WITH FINE MATERIALS AND DESIGNS.
- **EXW M1** - HIGH PERFORMANCE PROFESSIONAL SUCTION BENCHES IDEAL FOR PROCESSES USING ABRASIVE TOOLS NOT EQUIPPED WITH THEIR OWN SUCTION, WHICH CAN PRODUCE FUMES, DUST AND/OR PARTICULAR ODORS.

THOSE ARE THE PRODUCTS WE SELL ALL OVER EUROPE, WITH YEARS OF EXPERIENCE IN THIS FIELD.

OUR PRODUCTS ARE USED SINCE 2007 IN MORE THAN 205 CREMATORIA AROUND FRANCE, ENGLAND, BELGIUM, ITALY, POLAND, PORTUGAL AND NORDIC COUNTRIES.

BOTH PRIVATE AND PUBLIC BUYERS AFFIRM TO BE MORE THAN SATISFIED.

WE SELL, INSTALL AND PROVIDE ASSISTANCE WITH EXPERIENCED STAFF.



EXW - AUTOLOADERS

THE AUTOLOADERS CAN BE MATCHED TO EVERY KIND OF OVEN, TAILOR-MADE BASED ON THE CREMATORIUM CHARACTERISTICS

FULLY AUTOMATIC LOADER, PERFECT FOR QUICKLY AND SAFELY INTRODUCING COFFINS IN THE OVEN.

SUITABLE FOR EVERY HEIGHTS OF THE OVEN, IT IS DESIGNED ON CUSTOMER'S NEEDS.

BOTH ELECTRIC AND MANUAL LOADING OF THE COFFIN ARE POSSIBLE (*IN FULL RESPECT OF THE EUROPEAN REGULATIONS*).

LATERAL MOVEMENT OVER WHEELS OR RAILS. COMMANDS ARE BOTH ON THE AUTOLOADER AND THE REMOTE CONTROL (*RADIO-LOADER*).

SOME OF THE "EXW AUTOLOADER" ADVANTAGES:

- SMALL, EASY TO USE, FAST COFFIN CHARGING.
- WORKS IN FULL-AUTOMATIC / SEMI-AUTOMATIC / MANUAL MODE.
- ADAPTABLE TO EVERY KIND OF OVEN, AS THEY ARE MADE FOLLOWING CUSTOMER'S NEEDS.
- SUITABLE FOR EVERY KIND OF OVEN HEIGHT.
- SMALL DIMENSION, WHICH GUARANTEES COMFORT EVEN IN NARROW SPACES.
- IT REALIZES A CORRECT COFFIN INTRODUCTION IN THE OVEN, IN ORDER TO AVOID DANGEROUS SITUATIONS FOR THE STAFF AND/OR FOR THE OVEN ITSELF.
- DIFFERENT WORKING LEVELS: FROM +00mm UP TO +1200mm.
- ALL THE AUTOLOADER OPERATING LEVELS ARE AND CAN BE CUSTOMIZED.
- POSSIBILITY OF LOADING LARGE SIZE COFFINS OR COFFINS WITH FEET, WITHOUT NEEDING TO BUILD PLINTHS IN THE OVEN INNER SOLE.
- COFFIN WEIGHT CALCULATED BEFORE THE CREMATION BY THE AUTOLOADER WEIGHTING SYSTEM, TO CHOOSE THE MOST SUITABLE TYPE OF CREMATION.
- MAXIMUM LOAD WEIGHT = 300KG.
- QUICK INTRODUCTION OF THE COFFIN IN THE OVEN IN LOWER THAN 20sec (*FULLY RESPECTING THE EUROPEAN REGULATIONS*).
- BRIDGE ROTATION SYSTEM: 180° FREE-ROTATION WITH MECHANICAL SYSTEM BLOCK AT +90° / 0° / -90° (*AFTER TECHNICAL TEST*).
- EASY TO INSTALL, USE AND MAINTAIN.
- SIMPLE CONTROL AND COMMAND SYSTEM (*ON THE AUTOLOADER, THROUGH THE REMOTE CONTROL OR ON THE OVEN CONSOLE*).
- FIXED OR MOVABLE AUTOLOADER POSITION (*IN FRONT OF EVERY WORKING OVEN - MOBILITY OVER WHEELS AND ADJUSTABLE +/-30mm*).
- EXTREMELY COMFORTABLE MOVABLE AUTOLOADER POSITION FOR THE OPERATOR (*LOADING, UNLOADING, REMOTE CONTROL, ETC.*).
- PROGRAMMABLE MAINTENANCE WITH MULTI-ANNUAL CONTRACTS OF ASSISTANCE (*WITH AUTHORIZED EUROXWAY STAFF*).
- IT WORKS WITH AVERAGE BATTERIES OR ELECTRICITY GRID FROM 110V TO 240V.
- IN CASE OF AN ELECTRICITY BLACKOUT, THE MACHINE HAS A MANUAL COFFIN INTRODUCTION SYSTEM (*ALWAYS FULLY RESPECTING THE EUROPEAN STANDARDS*).

EXW AUTOLOADER 004A - LATERAL PUSH TO CHANGE POSITION OVER RAIL OR LOCKABLE WHEELS**CUSTOMER'S OPTIONAL CHOICES:**

- LATERAL TRANSFER ON RAIL OR LOCKABLE WHEELS
- ELECTRIC POWER SUPPLY (110V-240V)
- RECHARGEABLE BATTERIES ALIMENTATION (24V 80AH (20H)) WITH HIGH FREQUENCY CHARGER
- COMMAND ON THE MACHINE ONLY
- COMMAND ON THE MACHINE AND THROUGH REMOTE CONTROL
- COMMAND ON THE OVEN, ON SEPARATE PLC OR TABLET
- CUSTOMIZED HEIGHT, DEPENDING ON THE OVEN
- ADDITIONAL POSSIBILITY OF HEIGHT REGULATION (+/-30mm)
- COFFIN WEIGHING SYSTEM, RIGHT BEFORE CREMATION

STANDARD EQUIPMENT:

- MAXIMUM LOAD WEIGHT = 300KG
- BRIDGE LENGTH 630mm - MAXIMUM DIMENSIONS = 970mm x 2'260mm
- OVEN PENETRATION: 1'400mm (ADDITIONAL +30mm)
- SAFETY STOP BUTTON
- SECURITY KEY (ON/OFF)
- ACCELERATION AND SPEED REGULATION FOR THE COFFIN TO BE INTRODUCED
- HANDLES FOR LATERAL AND POSTERIOR MOVEMENTS
- MANUAL MECHANISM TO INTRODUCE THE COFFIN IN CASE OF POWER BLACKOUT
- HANDBOOK PROVIDED IN THE CUSTOMER'S NATIVE LANGUAGE
- EU DECLARATION OF CONFORMITY



EXW AUTOLOADER 003E - LOADER FOR TWO OR MORE OVEN HEIGHTS IN THE SAME CREMATORIUM**CUSTOMER'S OPTIONAL CHOICES:**

- LATERAL TRANSFER ON RAIL OR LOCKABLE WHEELS
- ELECTRIC POWER SUPPLY (110V-240V)
- RECHARGEABLE BATTERIES ALIMENTATION (24V 80AH (20H)) WITH HIGH FREQUENCY CHARGER
- COMMAND ON THE MACHINE ONLY
- COMMAND ON THE MACHINE AND THROUGH REMOTE CONTROL
- COMMAND ON THE OVEN, ON SEPARATE PLC OR TABLET
- CUSTOMIZED HEIGHTS, DEPENDING ON THE OVEN
- ADDITIONAL POSSIBILITY OF HEIGHT REGULATION (+/-30mm)
- COFFIN WEIGHING SYSTEM, RIGHT BEFORE CREMATION

STANDARD EQUIPMENT:

- MAXIMUM LOAD WEIGHT = 300KG
- BRIDGE LENGHT 630mm - MAXIMUM DIMENSIONS = 970mm x 2'260mm
- OVEN PENETRATION: 1'400mm (ADDITIONAL +30mm)
- SAFETY STOP BUTTON
- SECURITY KEY (ON/OFF)
- ACCELERATION AND SPEED REGULATION FOR THE COFFIN TO BE INTRODUCED
- HANDLES FOR LATERAL AND POSTERIOR MOVEMENTS
- MANUAL MECHANISM TO INTRODUCE THE COFFIN IN CASE OF POWER BLACKOUT
- HANDBOOK PROVIDED IN THE CUSTOMER'S NATIVE LANGUAGE
- EU DECLARATION OF CONFORMITY



EXW **AUTOLOADER 003E** - LOADER FOR TWO OR MORE OVEN HEIGHTS IN THE SAME CREMATORIUM**CUSTOMER'S OPTIONAL CHOICES:**

- LATERAL TRANSFER ON RAIL OR LOCKABLE WHEELS
- ELECTRIC POWER SUPPLY (110V-240V)
- RECHARGEABLE BATTERIES ALIMENTATION (24V 80AH (20H)) WITH HIGH FREQUENCY CHARGER
- COMMAND ON THE MACHINE ONLY
- COMMAND ON THE MACHINE AND THROUGH REMOTE CONTROL
- COMMAND ON THE OVEN, ON SEPARATE PLC OR TABLET
- CUSTOMIZED HEIGHTS, FOR TWO OR MORE OVEN
- ADDITIONAL POSSIBILITY OF HEIGHT REGULATION (+/-30mm)
- COFFIN WEIGHING SYSTEM, RIGHT BEFORE CREMATION

STANDARD EQUIPMENT:

- MAXIMUM LOAD WEIGHT = 300KG
- BRIDGE LENGHT 630mm - MAXIMUM DIMENSIONS = 970mm x 2'260mm
- OVEN PENETRATION: 1'400mm (ADDITIONAL +30mm)
- SAFETY STOP BUTTON
- SECURITY KEY (ON/OFF)
- ACCELERATION AND SPEED REGULATION FOR THE COFFIN TO BE INTRODUCED
- HANDLES FOR LATERAL AND POSTERIOR MOVEMENTS
- MANUAL MECHANISM TO INTRODUCE THE COFFIN IN CASE OF POWER BLACKOUT
- HANDBOOK PROVIDED IN THE CUSTOMER'S NATIVE LANGUAGE
- EU DECLARATION OF CONFORMITY



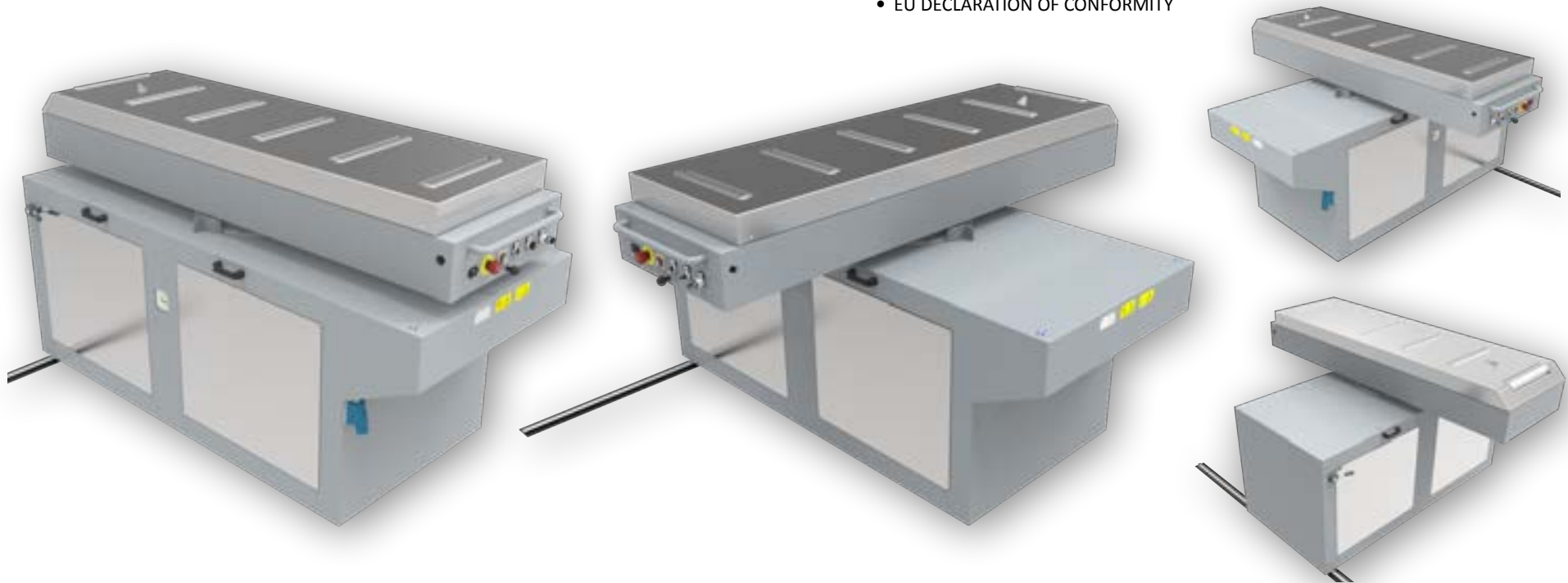
EXW AUTOLOADER 005R - 180° ROTATING LOADING BRIDGE (+90° / 0° / -90°)

CUSTOMER'S OPTIONAL CHOICES:

- LATERAL TRANSFER ON RAIL OR LOCKABLE WHEELS
- 180° BRIDGE ROTATION (+90° / 0° / -90°)
- ELECTRIC POWER SUPPLY (110V-240V)
- RECHARGEABLE BATTERIES ALIMENTATION (24V 80AH (20H)) WITH HIGH FREQUENCY CHARGER
- COMMAND ON THE MACHINE ONLY
- COMMAND ON THE MACHINE AND THROUGH REMOTE CONTROL
- COMMAND ON THE OVEN, ON SEPARATE PLC OR TABLET
- CUSTOMIZED HEIGHT, DEPENDING ON THE OVEN
- ADDITIONAL POSSIBILITY OF HEIGHT REGULATION (+/-30mm)
- COFFIN WEIGHING SYSTEM, RIGHT BEFORE CREMATION

STANDARD EQUIPMENT:

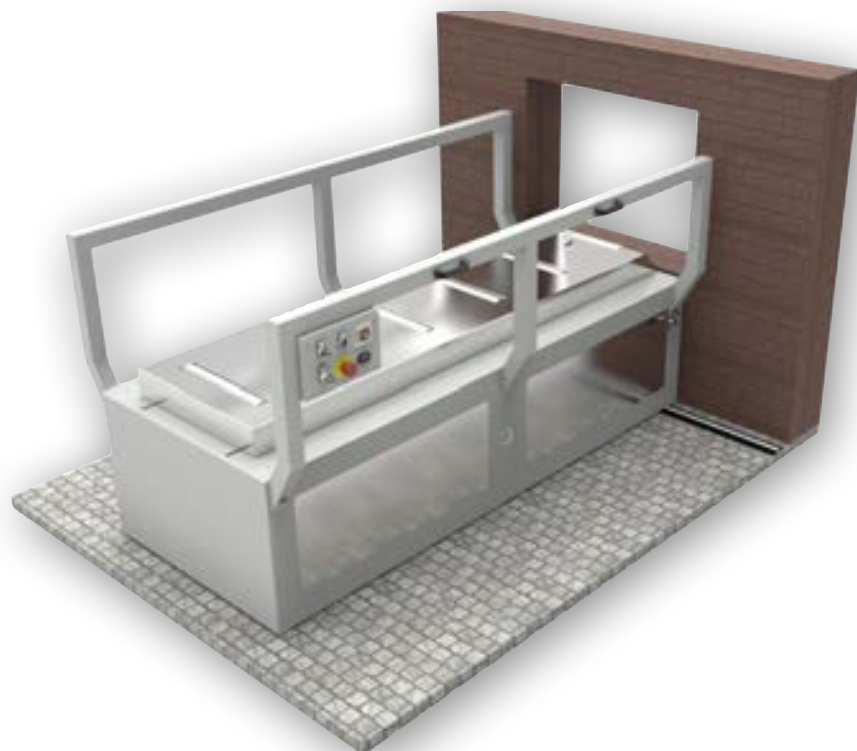
- MAXIMUM LOAD WEIGHT = 300KG
- BRIDGE LENGTH 630mm - MAXIMUM DIMENSIONS = 1'030mm x 2'190mm
- OVEN PENETRATION: 1'400mm (ADDITIONAL +30mm)
- SAFETY STOP BUTTON
- SECURITY KEY (ON/OFF)
- ACCELERATION AND SPEED REGULATION FOR THE COFFIN TO BE INTRODUCED
- HANDLES FOR LATERAL AND POSTERIOR MOVEMENTS
- HANDLES FOR BRIDGE LATERAL MOVEMENTS
- MANUAL MECHANISM TO INTRODUCE THE COFFIN IN CASE OF POWER BLACKOUT
- HANDBOOK PROVIDED IN THE CUSTOMER'S NATIVE LANGUAGE
- EU DECLARATION OF CONFORMITY



EXW AUTOLOADER 006B - WITH LATERAL PROTECTION

CUSTOMER'S OPTIONAL CHOICES:

- LINEAR TRANSFER ON RAIL WITH MANUAL TRACTION
- ELECTRIC POWER SUPPLY (110V-240V)
- LATERAL PROTECTION
- RECHARGEABLE BATTERIES ALIMENTATION (24V 80AH (20H)) WITH HIGH FREQUENCY CHARGER
- COMMAND ON THE MACHINE
- COMMAND ON THE MACHINE AND THROUGH REMOTE CONTROL
- COMMAND ON THE OVEN, ON SEPARATE PLC OR TABLET
- CUSTOMIZED HEIGHT, DEPENDING ON THE OVEN
- ADDITIONAL POSSIBILITY OF HEIGHT REGULATION (+/-30mm)



STANDARD EQUIPMENT:

- MAXIMUM LOAD WEIGHT = 300KG
- BRIDGE LENGHT 630mm - MAXIMUM DIMENSIONS = 1'200mm x 2'190mm
- OVEN PENETRATION: 1'400mm (ADDITIONAL +30mm)
- SAFETY STOP BUTTON
- SECURITY KEY (ON/OFF)
- ACCELERATION AND SPEED REGULATION FOR THE COFFIN TO BE INTRODUCED
- HANDLES FOR LATERAL AND POSTERIOR MOVEMENTS
- MANUAL MECHANISM TO INTRODUCE THE COFFIN IN CASE OF POWER BLACKOUT
- HANDBOOK PROVIDED IN THE CUSTOMER'S NATIVE LANGUAGE
- EU DECLARATION OF CONFORMITY



EXW **AUTOLOADER 007E** - LOADER FOR TWO OR MORE OVEN HEIGHTS IN THE SAME CREMATORIUM**CUSTOMER'S OPTIONAL CHOICES:**

- LINEAR TRANSFER ON RAIL WITH MANUAL TRACTION
- ELECTRIC POWER SUPPLY (110V-240V)
- RECHARGEABLE BATTERIES ALIMENTATION (24V 80AH (20H)) WITH HIGH FREQUENCY CHARGER
- COMMAND ON THE MACHINE ONLY
- COMMAND ON THE MACHINE AND THROUGH REMOTE CONTROL
- COMMAND ON THE OVEN, ON SEPARATE PLC OR TABLET
- CUSTOMIZED HEIGHTS, FOR TWO OR MORE OVEN
- ADDITIONAL POSSIBILITY OF HEIGHT REGULATION (+/-30mm)
- COFFIN WEIGHING SYSTEM, RIGHT BEFORE CREMATION

STANDARD EQUIPMENT:

- MAXIMUM LOAD WEIGHT = 300KG
- BRIDGE LENGHT 630mm - MAXIMUM DIMENSIONS = 1'000mm x 2'350mm
- OVEN PENETRATION: 1'400mm (ADDITIONAL +30mm)
- SAFETY STOP BUTTON
- SECURITY KEY (ON/OFF)
- ACCELERATION AND SPEED REGULATION FOR THE COFFIN TO BE INTRODUCED
- HANDLES FOR LATERAL AND POSTERIOR MOVEMENTS
- MANUAL MECHANISM TO INTRODUCE THE COFFIN IN CASE OF POWER BLACKOUT
- HANDBOOK PROVIDED IN THE CUSTOMER'S NATIVE LANGUAGE
- EU DECLARATION OF CONFORMITY

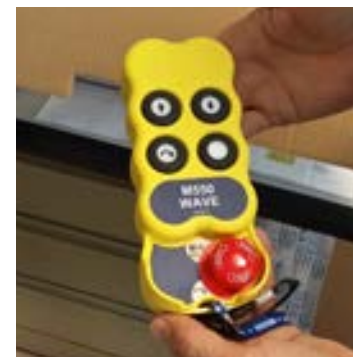


EXW AUTOLOADER 008R - 180° ROTATING BRIDGE (+90° / 0° / -90°) WITH ELECTRIC DRIVE ON RAILS**CUSTOMER'S OPTIONAL CHOICES:**

- LINEAR TRANSFER ON RAILS WITH ELECTRIC DRIVE
- COFFINS LOADING WITH ELECTRICAL DRIVE
- ELECTRIC POWER SUPPLY (110V-240V)
- 180° BRIDGE ROTATION (+90° / 0° / -90°)
- RECHARGEABLE BATTERIES ALIMENTATION (24V 80AH (20H)) WITH HIGH FREQUENCY CHARGER
- COMMAND ON THE MACHINE
- COMMAND ON THE MACHINE AND THROUGH REMOTE CONTROL
- COMMAND ON THE OVEN, ON SEPARATE PLC OR TABLET
- CUSTOMIZED HEIGHTS, DEPENDING ON THE OVEN
- ADDITIONAL POSSIBILITY OF HEIGHT REGULATION (+/-30mm)
- COFFIN WEIGHING SYSTEM, RIGHT BEFORE CREMATION

STANDARD EQUIPMENT:

- MAXIMUM LOAD WEIGHT = 300KG
- BRIDGE LENGHT 630mm - MAXIMUM DIMENSIONS = 900mm x 2'190mm
- OVEN PENETRATION: 1'400mm (ADDITIONAL +30mm)
- SAFETY STOP BUTTON
- SECURITY KEY (ON/OFF)
- ACCELERATION AND SPEED REGULATION FOR THE COFFIN TO BE INTRODUCED
- HANDLES FOR BRIDGE LATERAL MOVEMENTS
- MANUAL MECHANISM TO INTRODUCE THE COFFIN IN CASE OF POWER BLACKOUT
- HANDBOOK PROVIDED IN THE CUSTOMER'S NATIVE LANGUAGE
- EU DECLARATION OF CONFORMITY



EXW RADIOLOADER
RADIO-CONTROL

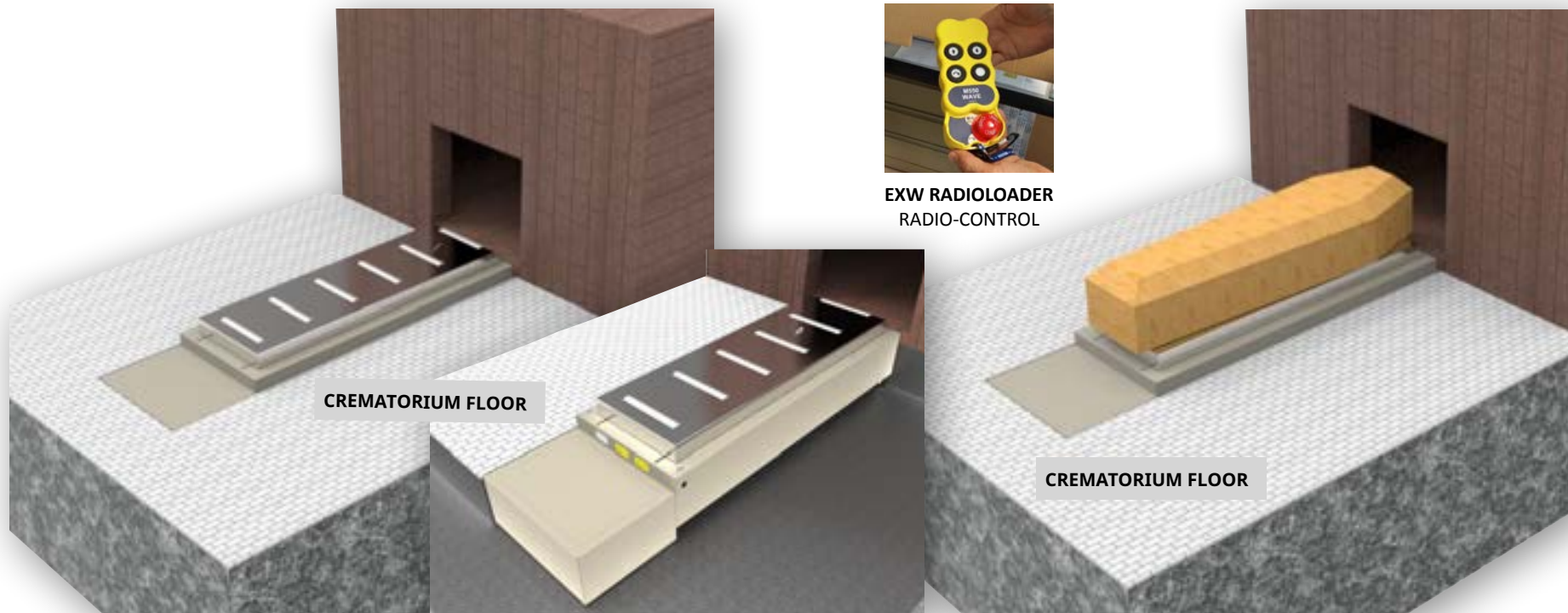
EXW **AUTOLOADER 009F** - LOW LOADER IN FIXED POSITION, OPERATED BY OVEN "CONTROLLER" OR RADIO-CONTROL

CUSTOMER'S OPTIONAL CHOICES:

- FIXED POSITION INTRODUCER (*BUILT INTO THE GROUND*)
- ELECTRIC POWER SUPPLY (*110V-240V*)
- RECHARGEABLE BATTERIES ALIMENTATION (*24V 80AH (20H)*) WITH HIGH FREQUENCY CHARGER
- COMMAND ON THE MACHINE
- COMMAND ON THE MACHINE AND THROUGH REMOTE CONTROL
- COMMAND ON THE OVEN, ON SEPARATE PLC OR TABLET
- HEIGHT AROUND 210mm FROM THE FLOOR
- ADDITIONAL POSSIBILITY OF HEIGHT REGULATION (*+/-30mm*)
- COFFIN WEIGHING SYSTEM, RIGHT BEFORE CREMATION

STANDARD EQUIPMENT:

- MAXIMUM LOAD WEIGHT = 300KG
- BRIDGE LENGHT 630mm - MAXIMUM DIMENSIONS 820mm x 2'820mm x 320mm
- OVEN PENETRATION: 1'400mm (*ADDITIONAL +30mm*)
- SAFETY STOP BUTTON
- SECURITY KEY (*ON/OFF*)
- ACCELERATION AND SPEED REGULATION FOR THE COFFIN TO BE INTRODUCED
- MANUAL MECHANISM TO INTRODUCE THE COFFIN IN CASE OF POWER BLACKOUT
- HANDBOOK PROVIDED IN THE CUSTOMER'S NATIVE LANGUAGE
- EU DECLARATION OF CONFORMITY



EXW **RADIOLOADER**
RADIO-CONTROL

CREMATORIUM FLOOR

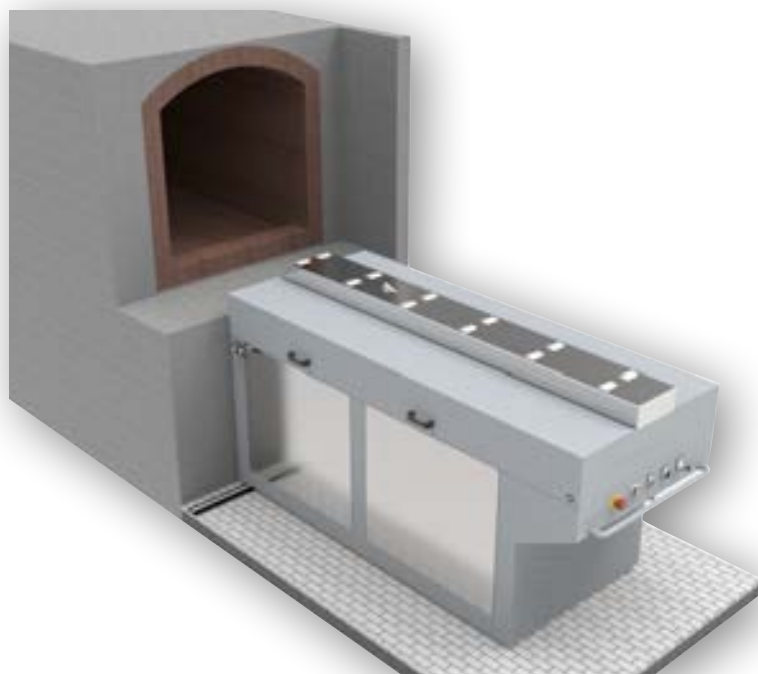
CREMATORIUM FLOOR

EXW AUTOLOADER 010A - NARROW BRIDGE TO LOAD COFFINS EVEN WITH FEET**CUSTOMER'S OPTIONAL CHOICES:**

- LATERAL TRANSFER ON RAIL OR LOCKABLE WHEELS
- ELECTRIC POWER SUPPLY (110V-240V)
- RECHARGEABLE BATTERIES ALIMENTATION (24V 80AH (20H)) WITH HIGH FREQUENCY CHARGER
- COMMAND ON THE MACHINE
- COMMAND ON THE MACHINE AND THROUGH REMOTE CONTROL
- COMMAND ON THE OVEN, ON SEPARATE PLC OR TABLET
- CUSTOMIZED HEIGHT, DEPENDING ON THE OVEN
- ADDITIONAL POSSIBILITY OF HEIGHT REGULATION (+/-30mm)
- COFFIN WEIGHING SYSTEM, RIGHT BEFORE CREMATION

STANDARD EQUIPMENT:

- MAXIMUM LOAD WEIGHT = 300KG
- BRIDGE LENGTH 250mm - MAXIMUM DIMENSIONS 990mm x 2'260mm
- OVEN PENETRATION: 1'400mm (ADDITIONAL +30mm)
- SAFETY STOP BUTTON
- SECURITY KEY (ON/OFF)
- ACCELERATION AND SPEED REGULATION FOR THE COFFIN TO BE INTRODUCED
- HANDLES FOR LATERAL MOVEMENTS
- MANUAL MECHANISM TO INTRODUCE THE COFFIN IN CASE OF POWER BLACKOUT
- HANDBOOK PROVIDED IN THE CUSTOMER'S NATIVE LANGUAGE
- EU DECLARATION OF CONFORMITY



**IT LOADS COFFINS WITH FEET, NO NEED
TO TAKE THEM OFF PRIOR CREMATION**



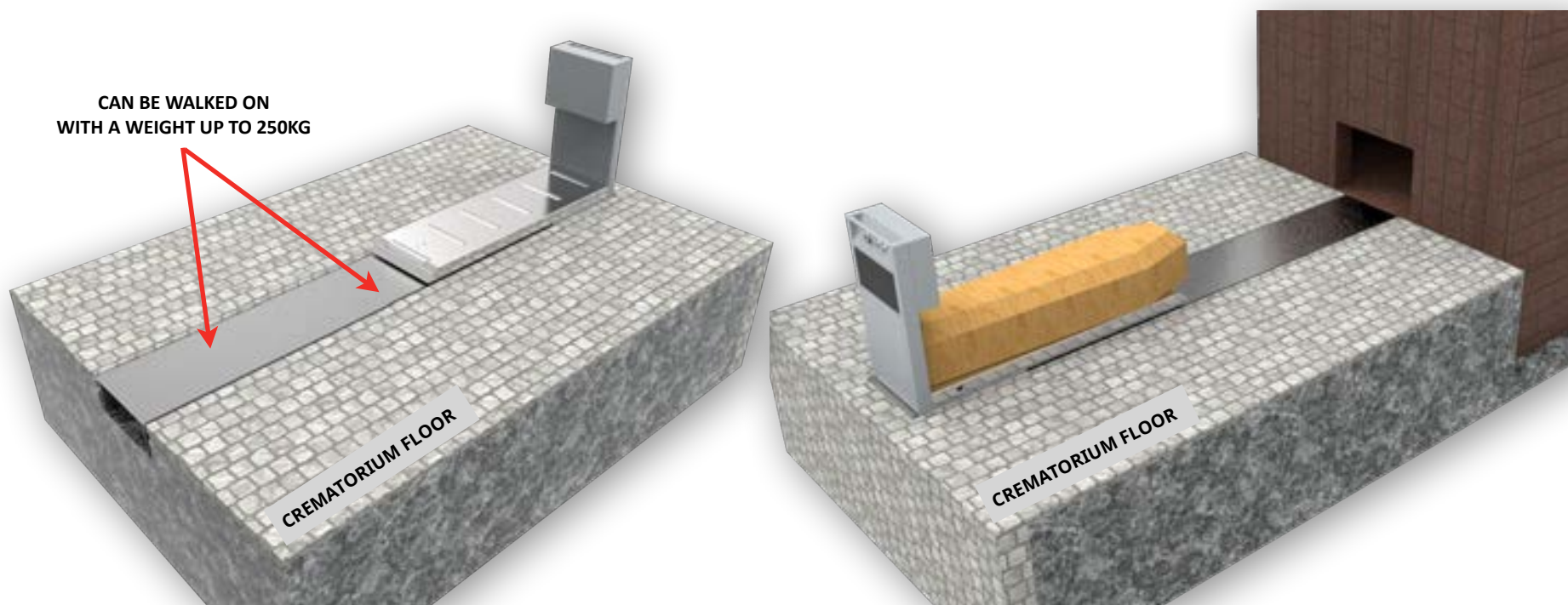
EXW AUTOLOADER 0011M - LOW LOADER WITH ELECTRIC OR MANUAL ADVANCEMENT PUSH

CUSTOMER'S OPTIONAL CHOICES:

- FIXED POSITION INTRODUCER (*BUILT IN THE GROUND*)
- ELECTRIC POWER SUPPLY (*110V-240V*)
- RECHARGEABLE BATTERIES ALIMENTATION (*24V 80AH (20H)*) WITH HIGH FREQUENCY CHARGER
- COMMAND ON THE MACHINE
- COMMAND ON THE MACHINE AND THROUGH REMOTE CONTROL
- COMMAND ON THE OVEN, ON SEPARATE PLC OR TABLET
- HEIGHT AROUND +120mm FROM THE FLOOR
- ADDITIONAL POSSIBILITY OF HEIGHT REGULATION (*+/-30mm*)
- COFFIN WEIGHING SYSTEM, RIGHT BEFORE CREMATION

STANDARD EQUIPMENT:

- MAXIMUM LOAD WEIGHT = 300KG
- BRIDGE LENGHT 630mm - MAXIMUM DIMENSIONS 820mm x 343mm
- OVEN PENETRATION: 1'400mm (*ADDITIONAL +30mm*)
- SAFETY STOP BUTTON
- SECURITY KEY (*ON/OFF*)
- ACCELERATION AND SPEED REGULATION FOR THE COFFIN TO BE INTRODUCED
- HANDLES FOR LINEAR MOVEMENTS
- MANUAL MECHANISM TO INTRODUCE THE COFFIN IN CASE OF POWER BLACKOUT
- HANDBOOK PROVIDED IN THE CUSTOMER'S NATIVE LANGUAGE
- EU DECLARATION OF CONFORMITY

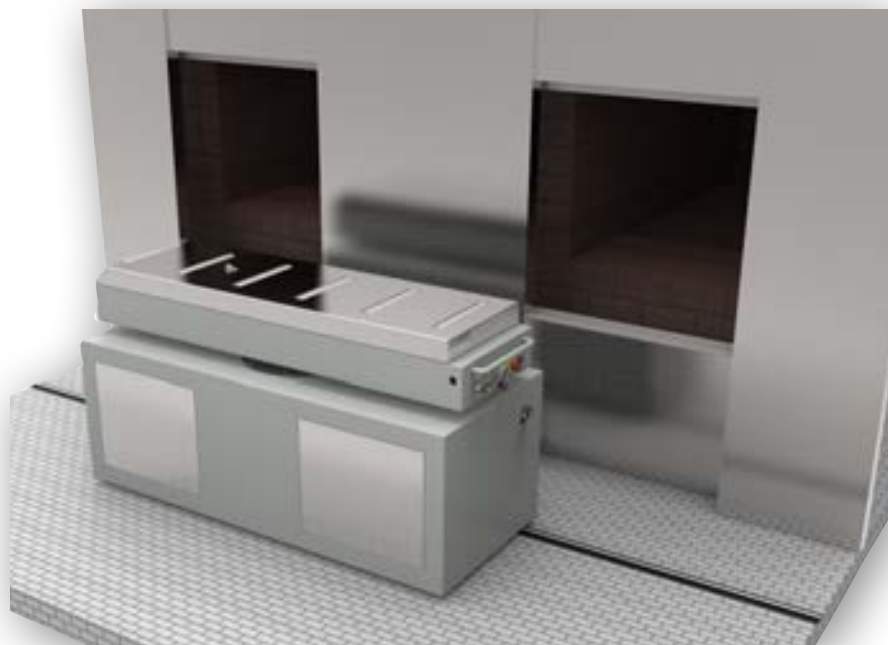


EXW AUTOLOADER 013R - 180° ROTATING BRIDGE (+90° / 0° / -90°) WITH ELECTRIC POWER PROTECTIONS BY NYLON/STEEL CABLE CHAIN**CUSTOMER'S OPTIONAL CHOICES:**

- LATERAL TRANSFER ON RAILS
- ELECTRIC POWER SUPPLY (110V-240V)
- RECHARGEABLE BATTERIES ALIMENTATION (24V 80AH (20H)) WITH HIGH FREQUENCY CHARGER
- 180° BRIDGE ROTATION (+90° / 0° / -90°)
- COMMAND ON THE MACHINE
- COMMAND ON THE OVEN, ON SEPARATE PLC OR TABLET
- CUSTOMIZED HEIGHT, DEPENDING ON THE OVEN
- ADDITIONAL POSSIBILITY OF HEIGHT REGULATION (+/-30mm)
- ELECTRIC POWER PROTECTIONS BY NYLON/STEEL CABLE CHAIN
- COFFIN WEIGHING SYSTEM, RIGHT BEFORE CREMATION

STANDARD EQUIPMENT:

- MAXIMUM LOAD WEIGHT = 300KG
- BRIDGE LENGTH 630mm - MAXIMUM DIMENSIONS 900mm x 2'190mm
- OVEN PENETRATION: 1'400mm (ADDITIONAL +30mm)
- SAFETY STOP BUTTON (ON THE REMOTE CONTROL)
- SECURITY KEY (ON/OFF)
- ACCELERATION AND SPEED REGULATION FOR THE COFFIN TO BE INTRODUCED
- HANDLES FOR LATERAL MOVEMENTS
- HANDLES FOR BRIDGE LATERAL MOVEMENTS
- MANUAL MECHANISM TO INTRODUCE THE COFFIN IN CASE OF POWER BLACKOUT
- HANDBOOK PROVIDED IN THE CUSTOMER'S NATIVE LANGUAGE
- EU DECLARATION OF CONFORMITY



EXW **AUTOLOADER 014A** - ELECTRIC POWER PROTECTIONS BY NYLON/STEEL CABLE CHAIN**CUSTOMER'S OPTIONAL CHOICES:**

- LATERAL TRANSFER ON RAILS
- ELECTRIC POWER SUPPLY (110V-240V)
- RECHARGEABLE BATTERIES ALIMENTATION (24V 80AH (20H)) WITH HIGH FREQUENCY CHARGER
- COMMAND ON THE MACHINE
- COMMAND ON THE OVEN, ON SEPARATE PLC OR TABLET
- CUSTOMIZED HEIGHT, DEPENDING ON THE OVEN
- ADDITIONAL POSSIBILITY OF HEIGHT CHANGING (+/-30mm)
- ELECTRIC POWER PROTECTIONS BY NYLON/STEEL CABLE CHAIN
- COFFIN WEIGHING SYSTEM, RIGHT BEFORE CREMATION

STANDARD EQUIPMENT:

- MAXIMUM LOAD WEIGHT = 300KG
- BRIDGE LENGHT 630mm - MAXIMUM DIMENSIONS 900mm x 2'190mm
- OVEN PENETRATION: 1'400mm (ADDITIONAL +30mm)
- SAFETY STOP BUTTON (ON THE REMOTE CONTROL)
- SECURITY KEY (ON/OFF)
- ACCELERATION AND SPEED REGULATION FOR THE COFFIN TO BE INTRODUCED
- HANDLES FOR LATERAL MOVEMENTS
- MANUAL MECHANISM TO INTRODUCE THE COFFIN IN CASE OF POWER BLACKOUT
- HANDBOOK PROVIDED IN THE CUSTOMER'S NATIVE LANGUAGE
- EU DECLARATION OF CONFORMITY



EXW AUTOLOADER 017E - ELECTRIC DRIVE WITH 90° ROTATION, SERVES TWO DIFFERENT OVENS AND HEIGHTS

CUSTOMER'S OPTIONAL CHOICES:

- LATERAL TRANSFER ON RAILS WITH ELECTRIC DRIVE
- ELECTRIC POWER SUPPLY (110V-240V)
- RECHARGEABLE BATTERIES ALIMENTATION (24V 80AH (20H)) WITH H. F. CHARGER
- COMMAND ON THE MACHINE
- COMMAND ON THE OVEN, ON SEPARATE PLC OR TABLET
- CUSTOMIZED HEIGHT, DEPENDING ON THE OVEN
- ADDITIONAL POSSIBILITY OF HEIGHT REGULATION (+/-30mm)
- COFFIN WEIGHING SYSTEM, RIGHT BEFORE CREMATION



STANDARD EQUIPMENT:

- MAXIMUM LOAD WEIGHT = 300KG
- BRIDGE LENGTH 630mm - MAXIMUM DIMENSIONS 950mm x 2'225mm
- OVEN PENETRATION: 1'400mm (ADDITIONAL +30mm)
- SAFETY STOP BUTTON (ON THE TOUCH SCREEN REMOTE CONTROL)
- SECURITY KEY (ON/OFF)
- ACCELERATION AND SPEED REGULATION FOR THE COFFIN TO BE INTRODUCED
- MANUAL MECHANISM TO INTRODUCE THE COFFIN IN CASE OF POWER BLACKOUT
- HANDBOOK PROVIDED IN THE CUSTOMER'S NATIVE LANGUAGE
- EU DECLARATION OF CONFORMITY



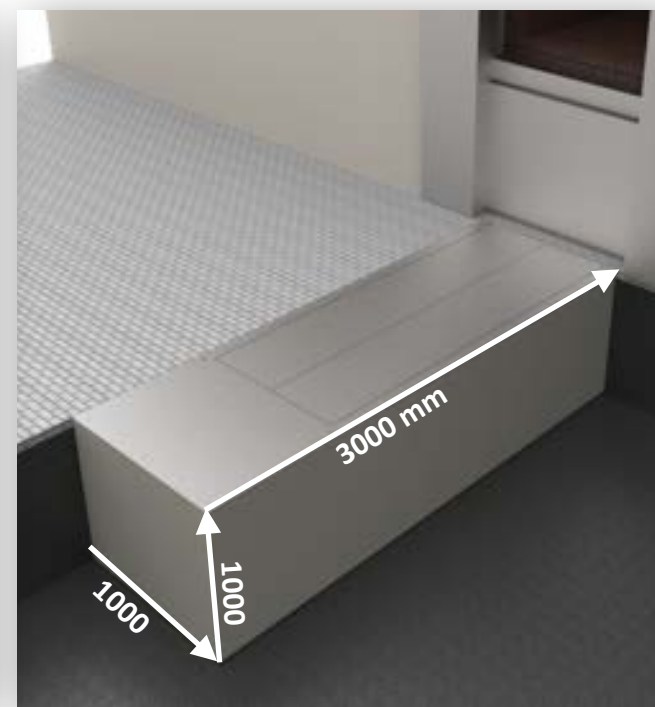
EXW AUTOLOADER 017F - LOADER FULLY HIDDEN IN THE GROUND WITH TIGHT BRIDGE TO LOAD COFFINS EVEN WITH FEET

CUSTOMER'S OPTIONAL CHOICES:

- FIXED POSITION INTRODUCER (*BUILT IN THE GROUND*)
- ELECTRIC POWER SUPPLY (*110V-240V*)
- RECHARGEABLE BATTERIES ALIMENTATION (*24V 80AH (20H)*) WITH HIGH FREQUENCY CHARGER
- COMMAND ON THE MACHINE AND THROUGH REMOTE CONTROL
- COMMAND ON THE OVEN, ON SEPARATE PLC OR TABLET
- HEIGHT WHEN THE MACHINE IS NOT WORKING: 000mm FROM THE GROUND
- OPERATIVE HEIGHTS: FROM +450mm TO +1'200mm FROM THE FLOOR
- ADDITIONAL POSSIBILITY OF HEIGHT REGULATION (*+/-30mm*)
- COFFIN WEIGHING SYSTEM, RIGHT BEFORE CREMATION

STANDARD EQUIPMENT:

- MAXIMUM LOAD WEIGHT = 300KG
- BRIDGE LENGHT 250mm - MAXIMUM DIMENSIONS 1'000mm x 1'000mm x 3'000mm
- OVEN PENETRATION: 1'400mm (*ADDITIONAL +30mm*)
- SAFETY STOP BUTTON (*ON THE REMOTE CONTROL*)
- SECURITY KEY (*ON/OFF*)
- ACCELERATION AND SPEED REGULATION FOR THE COFFIN TO BE INTRODUCED
- MANUAL MECHANISM TO INTRODUCE THE COFFIN IN CASE OF POWER BLACKOUT
- HANDBOOK PROVIDED IN THE CUSTOMER'S NATIVE LANGUAGE
- EU DECLARATION OF CONFORMITY



EXW AUTOLOADER 018S - PUSH SYSTEM

CUSTOMER'S OPTIONAL CHOICES:

- LATERAL TRANSFER ON RAILS
- ELECTRIC POWER SUPPLY (110V-240V)
- RECHARGEABLE BATTERIES ALIMENTATION (24V 80AH (20H)) WITH HIGH FREQUENCY CHARGER
- COMMAND ON THE MACHINE
- COMMAND ON THE OVEN, ON SEPARATE PLC OR TABLET
- CUSTOMIZED HEIGHT, DEPENDING ON THE OVEN
- ADDITIONAL POSSIBILITY OF HEIGHT REGULATION (+/-30mm)

STANDARD EQUIPMENT:

- MAXIMUM LOAD WEIGHT = 300KG
- BRIDGE LENGHT 630mm - MAXIMUM DIMENSIONS 900mm x 3'070mm
- OVEN PENETRATION: 2'600mm (ADDITIONAL +30MM)
- SAFETY STOP BUTTON (ON THE TOUCH SCREEN REMOTE CONTROL)
- SECURITY KEY (ON/OFF)
- ACCELERATION AND SPEED REGULATION FOR THE COFFIN TO BE INTRODUCED
- MANUAL MECHANISM TO INTRODUCE THE COFFIN IN CASE OF POWER BLACKOUT
- HANDBOOK PROVIDED IN THE CUSTOMER'S NATIVE LANGUAGE
- EU DECLARATION OF CONFORMITY



EXW AUTOLOADER 019A - EXTRA-LONG INTRODUCER BRIDGE (+1'700mm)**CUSTOMER'S OPTIONAL CHOICES:**

- LATERAL TRANSFER ON RAILS
- ELECTRIC POWER SUPPLY (110V-240V)
- RECHARGEABLE BATTERIES ALIMENTATION (24V 80AH (20H)) WITH HIGH FREQUENCY CHARGER
- COMMAND ON THE MACHINE
- COMMAND ON THE OVEN, ON SEPARATE PLC OR TABLET
- CUSTOMIZED HEIGHT, DEPENDING ON THE OVEN
- ADDITIONAL POSSIBILITY OF HEIGHT REGULATION (+/-30mm)
- ELECTRIC POWER PROTECTIONS BY NYLON/STEEL CABLE CHAIN
- COFFIN WEIGHING SYSTEM, RIGHT BEFORE CREMATION

STANDARD EQUIPMENT:

- MAXIMUM LOAD WEIGHT = 300KG
- BRIDGE LENGHT 630mm - MAXIMUM DIMENSIONS 900mm x 2'555mm
- OVEN PENETRATION: 1'700mm (ADDITIONAL +30mm)
- SAFETY STOP BUTTON (ON THE TOUCH SCREEN REMOTE CONTROL)
- SECURITY KEY (ON/OFF)
- ACCELERATION AND SPEED REGULATION FOR THE COFFIN TO BE INTRODUCED
- MANUAL MECHANISM TO INTRODUCE THE COFFIN IN CASE OF POWER BLACKOUT
- HANDBOOK PROVIDED IN THE CUSTOMER'S NATIVE LANGUAGE
- EU DECLARATION OF CONFORMITY



EXW AUTOLOADER 020R-01 - ELECTRIC DRIVE WITH ROTATION ON SITE OPERATED THROUGH REMOTE CONTROL

CUSTOMER'S OPTIONAL CHOICES:

- ELECTRIC DRIVE FOR TRANSFER ON RAILS
- ELECTRIC POWER SUPPLY (110V-240V)
- RECHARGEABLE BATTERIES ALIMENTATION (24V 80AH (20H)) WITH HIGH FREQUENCY CHARGER
- COMMAND ON THE MACHINE
- COMMAND ON THE OVEN AND THROUGH REMOTE CONTROL
- CUSTOMIZED HEIGHT, DEPENDING ON THE OVEN
- ADDITIONAL POSSIBILITY OF HEIGHT REGULATION (+/-30mm)
- MANUAL AUTOLOADER ROTATION ON SITE (+90° / 0° / -90°) CHOSEN BY CUSTOMERS
- COFFIN WEIGHING SYSTEM, RIGHT BEFORE CREMATION

**STANDARD EQUIPMENT:**

- MAXIMUM LOAD WEIGHT = 300KG
- BRIDGE LENGHT 630mm - MAXIMUM DIMENSIONS 900mm x 2'255mm
- OVEN PENETRATION: 1'400mm (ADDITIONAL +30mm)
- SAFETY STOP BUTTON (ON THE TOUCH SCREEN REMOTE CONTROL)
- SECURITY KEY (ON/OFF)
- ACCELERATION AND SPEED REGULATION FOR THE COFFIN TO BE INTRODUCED
- MANUAL MECHANISM TO INTRODUCE THE COFFIN IN CASE OF POWER BLACKOUT
- HANDBOOK PROVIDED IN THE CUSTOMER'S NATIVE LANGUAGE
- EU DECLARATION OF CONFORMITY



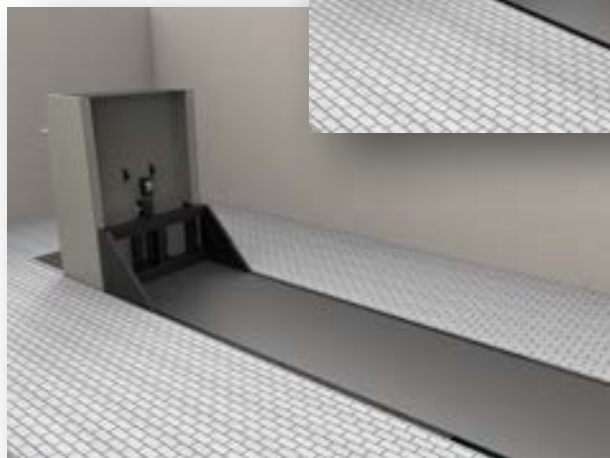
EXW AUTOLOADER CS 03-08-SP - MANUAL PUSH

CUSTOMER'S OPTIONAL CHOICES:

- MANUAL PUSH FOR TRANSFER ON RAILS
- ELECTRIC DRIVE FOR TRANSFER ON RAILS
- ELECTRIC CURRENT ALIMENTATION (110V-240V)
- RECHARGEABLE BATTERIES ALIMENTATION (24V 80AH (20H)) WITH HIGH FREQUENCY CHARGER
- COMMAND ON THE MACHINE
- COMMAND ON THE OVEN AND THROUGH REMOTE CONTROL
- CUSTOMIZED HEIGHT, DEPENDING ON THE OVEN
- ADDITIONAL POSSIBILITY OF HEIGHT REGULATION (+/-30mm)

STANDARD EQUIPMENT:

- MAXIMUM LOAD WEIGHT = 300KG
- BRIDGE LENGHT 900mm - MAXIMUM DIMENSIONS 1'010mm x 4'500mm
- SAFETY STOP BUTTON (ON THE TOUCH SCREEN REMOTE CONTROL)
- SECURITY KEY (ON/OFF)
- HANDBOOK PROVIDED IN THE CUSTOMER'S NATIVE LANGUAGE
- EU DECLARATION OF CONFORMITY



EXW AUTOLOADER 003E-03 - ELECTRICAL TRACTION LOADER SERVES MORE OVENS WITH DIFFERENT "MOUTH HEIGHTS"**CUSTOMER'S OPTIONAL CHOICES:**

- ELECTRIC DRIVE FOR TRANSFER
- ELECTRIC POWER SUPPLY (110V-240V)
- RECHARGEABLE BATTERIES ALIMENTATION (24V 80AH (20H)) WITH HIGH FREQUENCY CHARGER
- COMMAND ON THE MACHINE
- COMMAND ON THE OVEN AND THROUGH REMOTE CONTROL
- DIFFERENT CUSTOMIZED HEIGHTS, DEPENDING ON THE OVENS
- ADDITIONAL POSSIBILITY OF HEIGHT REGULATION (+/-30mm)

STANDARD EQUIPMENT:

- MAXIMUM LOAD WEIGHT = 300KG
- BRIDGE LENGHT 630mm - MAXIMUM DIMENSIONS 900mm x 2'500mm
- OVEN PENETRATION: 1'400mm (ADDITIONAL +30mm)
- SAFETY STOP BUTTON (ON THE TOUCH SCREEN REMOTE CONTROL)
- SECURITY KEY (ON/OFF)
- ACCELERATION AND SPEED REGULATION FOR THE COFFIN TO BE INTRODUCED
- MANUAL MECHANISM TO INTRODUCE THE COFFIN IN CASE OF POWER BLACKOUT
- HANDBOOK PROVIDED IN THE CUSTOMER'S NATIVE LANGUAGE
- EU DECLARATION OF CONFORMITY



TROLLEY - SUCTION BENCHES - ACCESSORIES

EXW TROLLEY - TO LOAD COFFINS MANUALLY OR BY ELECTRICAL DRIVE
ALL OUR TROLLEYS FOR COFFIN TRANSPORT ARE BUILT IN FULL COMPLIANCE WITH THE C.E. REGULATIONS

— —
EXW SUCTION BENCHES - HIGH PERFORMANCE PROFESSIONAL SUCTION BENCHES,
WHICH CAN ALSO BE USED IN PROCESSES THAT PRODUCE FUMES, DUST AND/OR PARTICULAR ODORS.



EXW TROLLEY ES 03/18 SP



EXW M1-SMALL

EXW TROLLEY 001 - TROLLEY FOR COFFIN TRANSPORT

TECHNICAL FEATURES:

- BUILT IN FULL COMPLIANCE WITH EUROPEAN SAFETY STANDARDS
- STEEL STRUCTURE EXTERNALLY FINISHED WITH "DURA-PROTECT" POWDER COATING
- PUSH-BUTTON COMMAND WITH 2-BUTTON "MAN-PRESENT" SELECTOR SWITCH
- SAFETY STOP BUTTON
- PERIMETER ANTI-SHEARING SAFETY BELLOW (*INDUSTRIAL STANDARD*)
- STEEL LOADING PLATFORM (*ANTI-SHEARING FAIRING*), WITH 6 IDLER ROLLERS
- ELECTRO-HYDRAULIC UP/DOWN SYSTEM WITH SECURITY END STOPS
- POWERED BY 24V 64AH BATTERY (20H) WITH BATTERY CHARGER
- 4 SAFETY WHEELS, ANTI-CRUSH FAIRING
- THE 2 PIVOTING REAR WHEELS ARE EQUIPPED WITH A PARKING BRAKE SYSTEM
- COFFIN LOCKING SYSTEM DURING TRANSPORT
- MAXIMUM LOAD WEIGHT = 200KG
- **DIMENSIONS**
 - ▶ LENGTH: 2'100mm
 - ▶ WIDTH: 700mm
 - ▶ MINIMUM HEIGHT ABOVE THE LOADING PLANE: 470mm
 - ▶ MAXIMUM HEIGHT ABOVE THE LOADING LEVEL: 1'700mm





EXW TROLLEY ES 03/18 SP
—
ELECTRICAL DRIVE FOR COFFIN LOADING/UNLOADING,
MOVING AND LIFTING

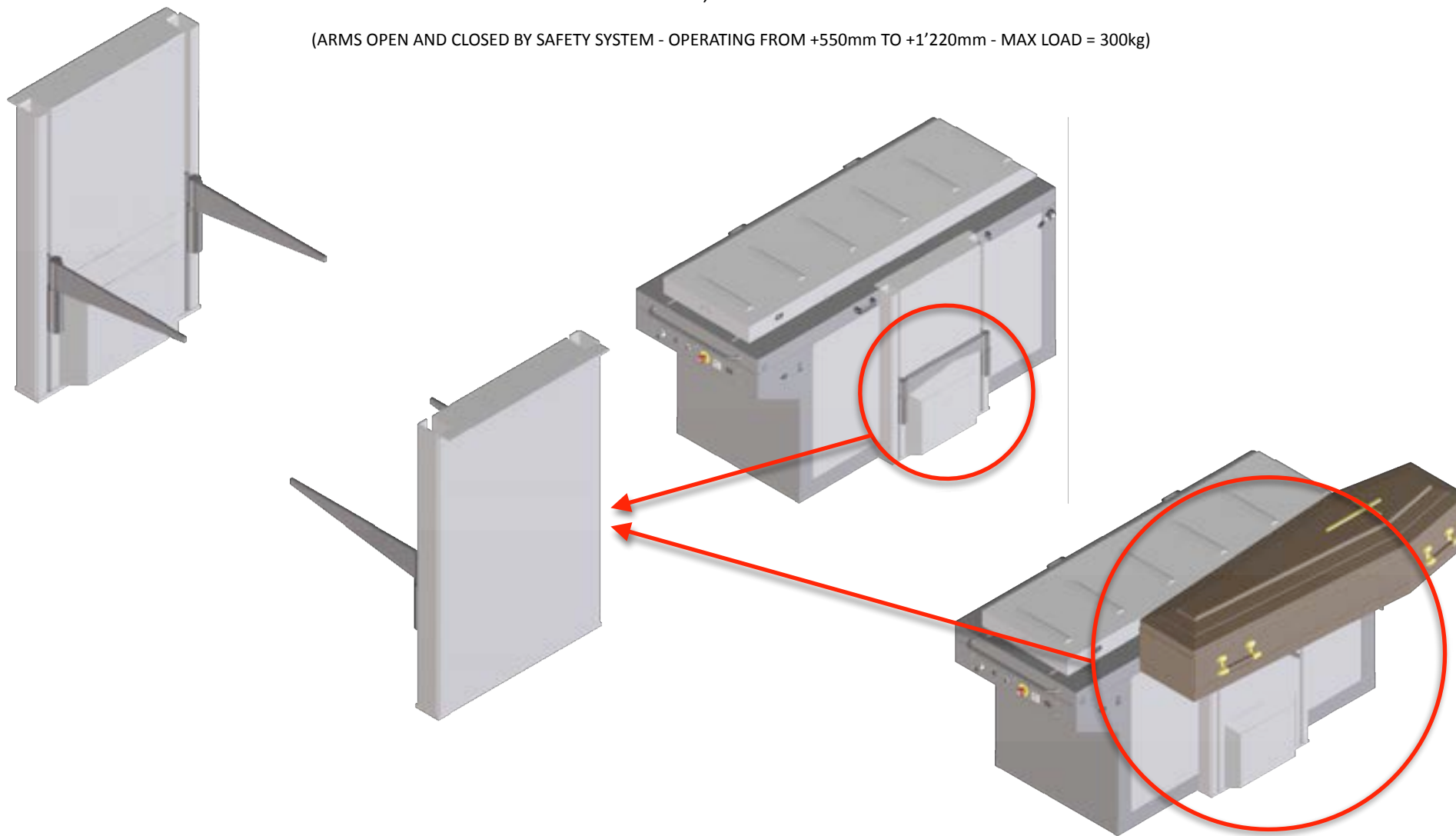
(OPERATING FROM +180mm TO +1'900mm - MAX LOAD = 300KG)



EXW DSI 03/12.2

—
SIDE COFFIN LIFTER, WITH ELECTRICAL DRIVE

(ARMS OPEN AND CLOSED BY SAFETY SYSTEM - OPERATING FROM +550mm TO +1'220mm - MAX LOAD = 300kg)



EXW **M1 SMALL** - HIGH PERFORMANCE PROFESSIONAL SUCTION BENCH**THE MAIN ADVANTAGES OF THIS SOLUTION:**

- SUITABLE FOR EXTRACTING FUMES, DUST AND PARTICULAR ODORS
- 3-SPEED SUCTION POWER ADJUSTMENT
- SUITABLE FOR PARTICULAR PROCESSES OR MANUAL WORK
- NON-SLIP AND SCRATCH-RESISTANT RUBBERIZED SUPPORT SURFACE
- CAN BE USED WITH TOOLS THAT DO NOT HAVE THEIR OWN SUCTION SYSTEMS
- INTERNAL SUCTION AND POCKET-FILTRATION SYSTEM
- IT WORKS AUTONOMOUSLY, WITHOUT BEING CONNECTED TO A CENTRALIZED SYSTEM
- CLASS F9 VERTICAL CARTRIDGE FILTER (*CLASS H FILTERS AS OPTIONAL*)
- DUST RECOVERY IN THE REMOVABLE POCKET WITH MANUAL OPENING
- SILENT ENGINE
- C.E. CERTIFICATION
- MADE IN ITALY

**TECHNICAL FEATURES:**

- DIMENSIONS: 1'000mm x 1'000mm x 1'000mm
- WEIGHT: 111KG
- VOLTAGE: 250V 50HZ
- SUCTION VOLUME: 2'500m³/h
- SUCTION TURBINE: 750W (3 SPEEDS)
- ENGINE DECIBELS: 72db
- **OPTIONAL (CAN BE EQUIPPED WITH):**
 - ▶ WHEELS TO FACILITATE TRANSPORT
 - ▶ PRE-FILTERS
 - ▶ EXTERNAL EXHAUST
 - ▶ CONTAINMENT BULKHEADS (*MAX 3*)
 - ▶ **M1-IRONBOX** FOR SANDBLASTERS (*WITH FRONT GLASS, GLOVES AND INTERNAL LIGHT*)

EXW **M1 JOLLY** - HIGH PERFORMANCE PROFESSIONAL SUCTION BENCH**THE MAIN ADVANTAGES OF THIS SOLUTION:**

- SUITABLE FOR EXTRACTING FUMES, DUST AND PARTICULAR ODORS
- 3-SPEED SUCTION POWER ADJUSTMENT
- SUITABLE FOR PARTICULAR PROCESSES OR MANUAL WORK
- NON-SLIP AND SCRATCH-RESISTANT RUBBERIZED SUPPORT SURFACE
- CAN BE USED WITH TOOLS THAT DO NOT HAVE THEIR OWN SUCTION SYSTEMS
- INTERNAL SUCTION AND POCKET-FILTRATION SYSTEM
- IT WORKS AUTONOMOUSLY, WITHOUT BEING CONNECTED TO A CENTRALIZED SYSTEM
- CLASS F9 VERTICAL CARTRIDGE FILTER (*CLASS H FILTERS AS OPTIONAL*)
- DUST RECOVERY IN THE REMOVABLE POCKET WITH MANUAL OPENING
- SILENT ENGINE
- C.E. CERTIFICATION
- MADE IN ITALY

**TECHNICAL FEATURES:**

- DIMENSIONS: 800mm x 1'000mm x 900mm
- WEIGHT: 80,5KG
- VOLTAGE: 230V 50HZ
- SUCTION VOLUME: 2'000m³/h
- SUCTION TURBINE: 750W (3 SPEEDS)
- ENGINE DECIBELS: 72db
- **OPTIONAL (CAN BE EQUIPPED WITH):**
 - ▶ WHEELS TO FACILITATE TRANSPORT
 - ▶ PRE-FILTERS
 - ▶ EXTERNAL EXHAUST
 - ▶ CONTAINMENT BULKHEADS (*MAX 3*)
 - ▶ **M1-IRONBOX** FOR SANDBLASTERS (*WITH FRONT GLASS, GLOVES AND INTERNAL LIGHT*)
 - ▶ **M1-JOLLY EXTENSION** PANTOGRAPH EXTENSION OF THE BENCH (*EXTENDABLE BY 1,5m PER SIDE AND/OR 70cm IN HEIGHT*)

EXW M1 - HIGH PERFORMANCE PROFESSIONAL SUCTION BENCH

THE MAIN ADVANTAGES OF THIS SOLUTION:

- SUITABLE FOR EXTRACTING FUMES, DUST AND PARTICULAR ODORS
- 3-SPEED SUCTION POWER ADJUSTMENT
- SUITABLE FOR PARTICULAR PROCESSES OR MANUAL WORK
- NON-SLIP AND SCRATCH-RESISTANT RUBBERIZED SUPPORT SURFACE
- CAN BE USED WITH TOOLS THAT DO NOT HAVE THEIR OWN SUCTION SYSTEMS
- INTERNAL SUCTION AND POCKET-FILTRATION SYSTEM
- IT WORKS AUTONOMOUSLY, WITHOUT BEING CONNECTED TO A CENTRALIZED SYSTEM
- CLASS F9 VERTICAL CARTRIDGE FILTER (*CLASS H FILTERS AS OPTIONAL*)
- DUST RECOVERY IN THE REMOVABLE POCKET WITH MANUAL OPENING
- SILENT ENGINE
- C.E. CERTIFICATION
- MADE IN ITALY

**TECHNICAL FEATURES:**

- DIMENSIONS: 2'000mm x 1'000mm x 900mm
- WEIGHT: 194KG
- VOLTAGE: 400V 50HZ
- SUCTION VOLUME: 5'000m³/h
- SUCTION TURBINE: 1,9kW
- ENGINE DECIBELS: 75db
- **OPTIONAL (CAN BE EQUIPPED WITH):**
 - ▶ WHEELS TO FACILITATE TRANSPORT
 - ▶ PRE-FILTERS
 - ▶ EXTERNAL EXHAUST
 - ▶ INVERTER
 - ▶ CONTAINMENT BULKHEADS (*MAX 3*)
 - ▶ SUCTION BULKHEAD (*MAX 1*)

EUROXWAY® SRL

THE *FUTURE* OF TECHNOLOGY AND INNOVATION *AVAILABLE TODAY*

EUROXWAY SRL (s.u.) Office: Viale della Repubblica 7/C - 42024 Castelnovo di Sotto (RE) Italy

Part. IVA - Cod. Fiscale (VAT/TVA): IT 01546560358 - Office Phone: +39 0522 682548 - www.euroxway.com - Mail: admin@euroxway.it
Data, and specifications in this catalog are subject to change without notice

LAST UPDATE: 03/2024