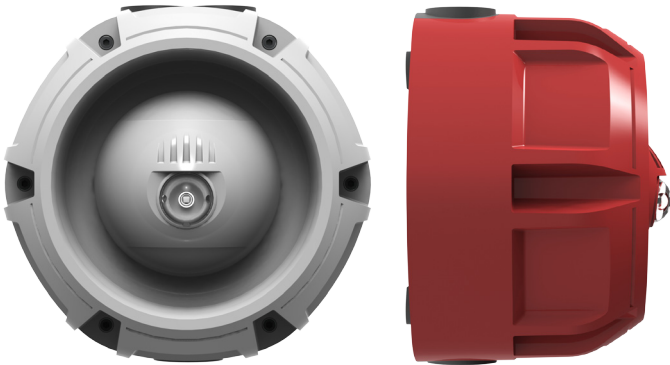


# Raptor Conventional Weatherproof Sounder Beacon (ZRPB/R & ZRPB/W)



## Description

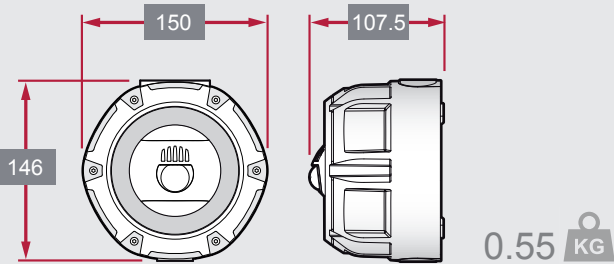
The Raptor conventional sounder with beacon has a coverage pattern of W 5.1 - 7.25 and the sounder part has 22 selective tones.

It has been designed to make an “electronics free” first fix and is available in red or white.

## Features

- Complies with EN54 Pt 3 Type B & EN54 Pt 23
- 107dB +/- 3dB @ 1m sound output
- 22 Tone patterns (site selectable)
- Suitable for surface mounting only
- Housed in UL V0 flame retardant ABS
- 3 x 20mm cable entries (2 top, 1 bottom)
- First fix, wire to back box technology
- Flashing rate 0.5Hz

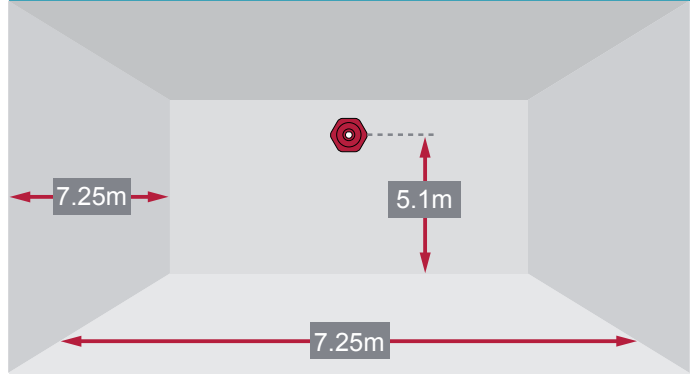
## Dimensions & Weight



## Technical Specification

Model	ZRPB/R	ZRPB/W
Part No.	42-632	42-633
Voltage	17 - 30V DC	
Current @ 30V DC	70mA Max	
Flash Colour	White	White
Flash Frequency	0.5Hz	
Body Colour	Red	White
Sounder Type	B	
IP Rating	IP65 (certified to IP33C)	
Operating Temperature	-25°C to 70°C	
Sound Output @ 1m	*107dB +/- 3dB	
Size mm (with back box)	150 x 146 x 107.5	
Weight	550g	

## Coverage



\* This applies to 'TONE 0' 800Hz and 970Hz, 500ms each