

Reset Call Point & Waterproof Reset Call Point

(ZT-CP3, ZT-CP3/WP)



ZT-CP3



ZT-CP3/WP

The ZT-CP3 and ZT-CP3/WP call points are unique in that they mimic the feel of breaking glass whilst offering the user the benefits and environmental advantages of a re-settable operating element.

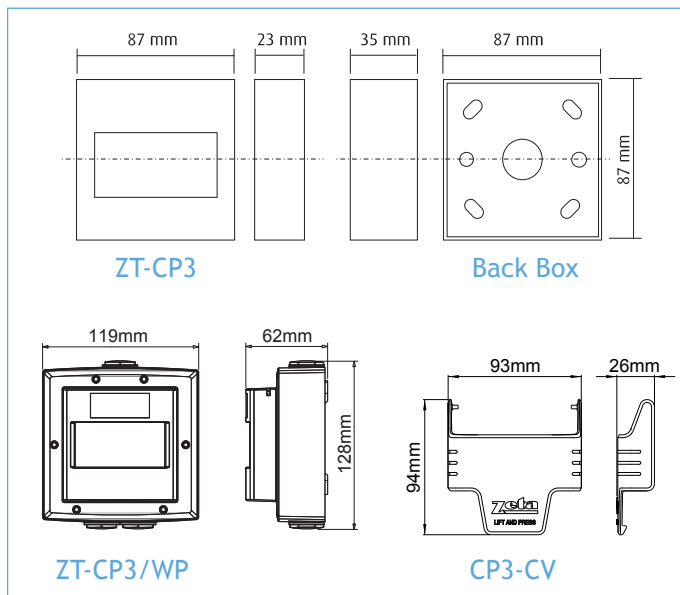
The CP3 uses a simple yet ingenious patented mechanism which consists of a rigid plastic operating element and an over centre spring mechanism. This arrangement provides real action on operation and simulates break glass activation.

An activation indicator drops into view at the top of the window after the CP3 has been operated. The unit is then simply reset with a key and is ready for re-use straight away.

A special Polycarbonate cover (CP3-CV) is available for extra protection against accidental activation and thus allowing the unit to operate as a double action call point. This must be ordered separately.

Flush Mount Installation

An optional flush mount bezel is available for the indoor ZT-CP3 call point and can be ordered under the code CP3-FMB.



Features

- ✓ EN54-11 approved
- ✓ Waterproof tested to IP67 (ZT-CP3/WP only)
- ✓ Glass appearance maintains operator deterrence
- ✓ Positive activation that mimics the feel of breaking glass
- ✓ Visible warning flag confirms activation
- ✓ Simple key to reset operating element (no broken glass)
- ✓ Complete functional test with every activation

Model	ZT-CP3	ZT-CP3/WP
Current Rating	(All Series) 3 Amps 12 - 24V DC (Series 02-04 & 11) 3 Amps 125 - 250V AC	(Series 01 & 11) 3 Amps 12 - 24V DC (Series 11) 3 Amps 125 - 250V AC
Low Current Rating (All Series)	1-100 mA 5 - 12V DC 0.1 Amps 125 - 250V AC	
Housing and Mounting Box Material	Polycarbonate	
Electrical Contact Material	Silver plated brass	
Operating Temperature	-20 degrees C to +65 degrees C	
Installation Terminal Conductor Size	0.5mm - 2.5mm	
Colours	Red, Yellow, Green, Blue & White	
Mounting	Flush or surface with back box	
IP Rating	IP32	IP67

Applications

The CP3 is compatible with most conventional fire alarm systems. It is safe for use in areas where glass cannot be used, e.g. food processing plants and swimming/leisure centres.

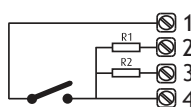
As the unit can be simply reset it provides an ideal solution for areas that suffer from a high number of false activations such as schools, shopping centres and other public places.

The IP67 Waterproof CP3 has been designed to deal with today's harsh environments and the cover adds an extra measure of protection against damage or accidental activation. This is especially useful where emergency systems are involved and accidental activation could cause serious delays in production or other operations. Where risk of malicious activation is a concern, the cover with an optional integral sounder can be highly beneficial. When the cover is lifted, the device emits a piercing 96dB alarm and the prankster will either run or be caught. The Waterproof CP3 can also be supplied with an integral cover to prevent accidental damage.

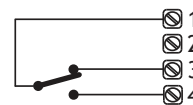


Electrical Arrangement

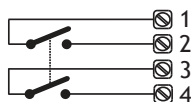
Series 01 will interface with most conventional fire alarm systems. It is fitted with two internal resistors 470 (R1) and 680 (R2) ohms. These are easily accessed through the installer terminals.



Series 02 is fitted with a single pole changeover switch both the normally open and normally closed contacts are easily accessed through the installer terminals.



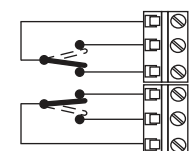
Series 03 is fitted with a double pole normally open switch easily accessed through the installer terminals.



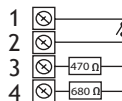
Series 04 is fitted with a double pole normally closed switch easily accessed through the installer terminals.



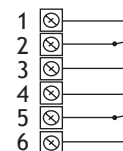
Series 11 incorporates two independent single pole changeover switches providing double pole changeover contacts. These are easily accessed through the installer terminals.



Waterproof Series 01 will interface with most conventional fire alarm systems. It is fitted with two resistors 470 and 680 ohms easily accessed through the installer terminals.



Waterproof Series 11 incorporates two independent single pole changeover switches providing double pole changeover contacts easily accessed through the installer terminals.



NB: Switch arrangements shown with call point in standby

How To Order: Indoor Call Points

Prefix	Colour Option	Mounting Option	Electrical Arrangement
ZT-CP3	/R = Red /Y = Yellow /G = Green /B = Blue /W = White	/S = Surface Mounting /F = Flush Mounting	/01 = Conventional fire model includes two resistor values 470 & 680 / ohms /02 = Single pole changeover /03 = Double pole - normally open /04 = Double pole - normally closed /11 = Double pole changeover

Weatherproof Call Points

Prefix	Colour Option	Electrical Arrangement
ZT-CP3/WP	/R = Red /Y = Yellow /G = Green /B = Blue /W = White	/01 = Conventional fire model includes two resistor values 470 & 680 ohms /11 = Double pole changeover

Optional Extra

Order Code	Description
CP3-CV	Perspex Cover for CP3 Series Manual Call Point