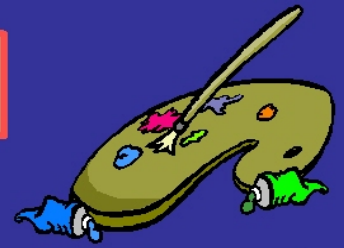


September
2023

The Palette

BURLINGAME ART SOCIETY



Committee Chairs

President

~ DIANA DAY GLYNN

Vice President/Programs

~ SUSAN PIZZI

Treasurer

~ BARBARA ALGER

Recording Secretary

~ BARBARA LAMBERT

Publicity

~ PAT BARR

Scholarship

~ MARY MEISSNER



Membership

~ SHERRY ZACHARIA

Special Events Coordinator

~ GLORIA MUELLER

Exhibits & Palette Editor

~ DIANA DAY GLYNN

Website Editor

~ SOFIA MEDEIROS

Hospitality Coordinator

~ MARIA SANCHEZ

Monthly Awards

~ LEONA MORIARTY

~ OLGA PARR

~ MARIA SKY

**Up
NEXT**

Come join us for our next BAS meeting on **Saturday, September 9th** from **1:30 to 4:00 pm**, in the Fine Arts Room at the Burlingame Community Center, 850 Burlingame Ave., Burlingame. **Hope to see you there.....**

September's BAS general meeting will feature guest artist Caroline Mustard, who will demonstrate digital art and how she uses digital applications to develop and work out



her paintings on canvas. Caroline is a working artist who also teaches classes in drawing, painting and digital iPad art. Well known for her classes at Palo Alto's Pacific Art League and since the pandemic, via Zoom. She holds a degree in Fine Art from the University of Brighton, England, is a co-author of "The Joy of Drawing" book & video series, as well as co-founder of "The Joy of Drawing, Inc.", a non-profit organization providing free drawing workshops in San Mateo County libraries. Caroline is currently working on a series of oil paintings about San Francisco, which began with an iPhone sketch. She refers to it as "drawing fusion".

Next Committee Meeting will be September 9th, 2023, 2:30pm at Sherry's

President's Message

Dear Members,

I hope that everyone had a nice summer, but now that it's coming to an end.....Heeere we go, It's Showtime!!! Now we need to put all of our attention and efforts into putting on a great 27th Annual Art Show. Members have until September 8th to send in their entry forms, to enter up to four paintings for inclusion in the show. I really want to encourage all of you, including members that may be fairly new painters and have never participated in a show, as there are many reasons to do so. One being the chance to celebrate your creative journey & any progress you've made. Other reasons are that art shows offer a unique opportunity to receive feedback from a diverse audience, they offer a chance to network with other artists or art enthusiasts (possibly even a potential buyer), and by sharing your work you can touch the hearts & minds of others, potentially even motivating them to pursue their own artistic passions. Our BAS Shows are not only meant for those that are professional or well-seasoned, so let's come together as a community of artists to make this year's show a testament to our creativity, passion, and dedication.

If any of you need to refresh your memories regarding Show Participation and/or Rules for Exhibiting you can find the information on the BAS web-site, along with the Entry Form..... burlingameartsociety.org

Diana

Volunteers

As a reminder to all members the Burlingame Art Society is solely managed by volunteers and we can always use more help for jobs that need to be done to keep us going. We hope that you will consider joining our wonderful group of volunteers that take on these tasks. For more information please feel free to speak with anyone on the BAS Leadership Committee.

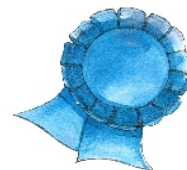
MANY HANDS MAKE LIGHT WORK!

Welcome New Member

~ Sonia Brittain

If you know someone that is interested in joining the Burlingame Art Society, let them know that if they join between now and the end of September, the membership fee is only \$25 per person...

June Ribbon Winners



1st Place



Tania Hall "Lombard Street"

2nd Place



Jean Polk "Friends"

Photos
by
Diana
Day
Glynn

3rd Place



Maria Sanchez "Dream Catcher"

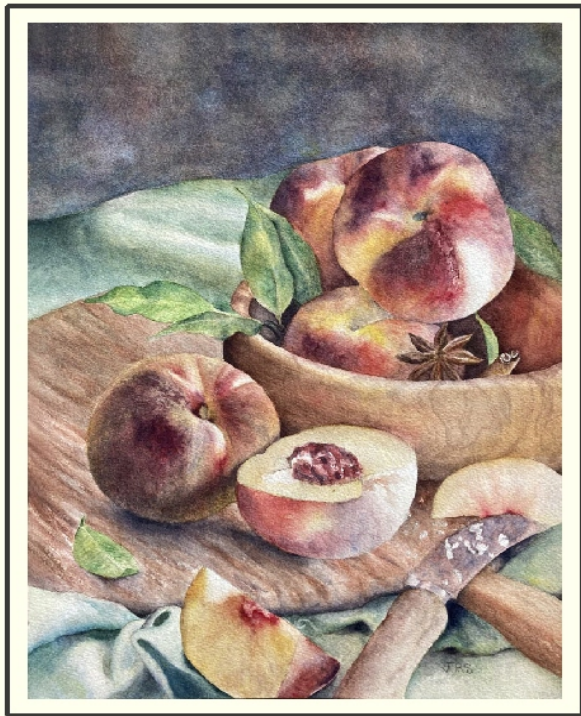
Honorable Mention



John Quilici "Exploding Cactus"



June Popular Choice Winner



Jessica Stephenson
"Palisade Peaches"

MEETING RECAP

The June meeting was all about Acrylics as our guest artist, Judy Gittelsohn, happens to be a representative for the Golden Paint company. Judy treated us to a fun and informative demonstration, showing us many of the different types of paints and other products that Golden offers. She explained the different acrylic types, ranging from their original Heavy Body (thick and buttery), to High Flow (thin and pourable), to OPEN acrylics (slow drying). She also shared information on the many kinds of mediums, along with the different gels and pastes. So many interesting ways to create art...

Judy also came bearing gifts, as in a small bag of Golden samples for every member attending the day's meeting.



Offers a 10% discount if you mention being a BAS member at the point of purchase. Open Mon-Sat 9.30-6 pm,
Sun 11:00-5 pm

burlingameartsociety.org



Burlingame Art Society
P.O.Box 1754
Burlingame. Ca 94010

