

**October  
2024**



# The Palette

**BURLINGAME ART SOCIETY**



## Committee Chairs

### President

~ **DIANA DAY GLYNN**

### Programs/Vice President

~ **POSITION OPEN**

### Treasurer

~ **BARBARA ALGER**

### Recording Secretary

~ **BARBARA LAMBERT**

### Publicity

~ **POSITION OPEN**

### Scholarship

~ **MARY MEISSNER**

### Membership

~ **LISA GALAVIZ**

### Special Event Coordinator

~ **GLORIA MUELLER**

### Exhibits & Palette Editor

~ **DIANA DAY GLYNN**

### Website Editor

~ **SOFIA MEDEIROS**

### Hospitality Coordinator

~ **MARIA SANCHEZ**

### Monthly Awards

~ **LEONA MORIARTY**

~ **OLGA PARR**

~ **MARIA SKY**

Come join us for our next BAS meeting on Saturday, **October 12th from 1:30 to 4:00 pm**, in the Fine Arts Room at the Burlingame Community Center, 850 Burlingame Ave., Burlingame. **Hope to see you there.....**

**Up** The guest artist for our October BAS meeting will be Robin Scholl, who has been painting in her Los Altos studio & teaching at the Pacific Art League in Palo Alto for 30-plus years. She is known for impressionistic landscapes with a focus on light and color in the natural world. She works from photographs taken during her wide travels and favorite California scenes, using four media: Oils, Watercolor, Watercolor with Gouache, and Watercolor with Pastels, which is what she will be demonstrating for BAS this month. Her signature layered technique builds up the media, creating movement & depth uncommon in watercolors. Robin currently exhibits at Fast Frame Gallery in Los Altos, Marcella's Village Gallery in Menlo Park., the Portola Art Gallery in Allied Arts, Menlo Park, and on her web-site at [www.robinscholl.com](http://www.robinscholl.com)





Next Committee Meeting will be October 10th, 2024, 2:30pm at Sherry's

## President's Message

Dear Members,

Well, the best thing about the unfortunate change of date for our 28th Annual Art Show, is that we have a couple more weeks to prepare.....a little more time to finish up a painting or even start and finish a new one. I will have a meeting with the Community Center this coming week to cement a new date for the show and let you all know as soon as I know. But as a heads up I believe the dates may be November 7th through the 10th.

It was brought to my attention by a couple of members that you were unable to open one or more of the forms that I had sent in my previous email regarding show entries etc. and I am working on fixing that issue. At the risk of sounding like a broken record (does anyone remember what those are?...hehe), there is a lot of work that goes into putting together these shows, and much hinges on the amount of entries we get. So, PLEASE be ready for when the entry forms with the new dates get sent to you and send in those filled out entry forms, as soon as possible.

I truly hope that you will all participate and not have the attitude that "If I don't enter it won't matter" because if everyone thought that way we would have no show at all, so it really does matter. And remember, the bigger the show the better.

*Diana*



### Volunteers

As a reminder to all... the Burlingame Art Society is solely managed by volunteers, which means we can always use more help with jobs that need to be done to keep us going. We hope that you will consider joining the wonderful group of volunteers that take on these tasks. **We are especially in need of help with programs at this time.** For more information please feel free to speak with anyone on the BAS Leadership Committee.

***MANY HANDS MAKE LIGHT WORK!***

### BAS Membership Reminders

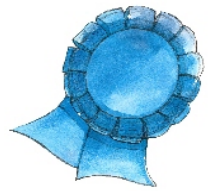
There are just 2 more demo meetings left this year, so if you know someone who is an artist or an art lover, and you think they might be interested in BAS, please invite them to attend one of these 2 meetings so they can see if they would like to become a member. New members can join between October & December for only \$15 and be able to attend our Decemeber Holiday Celebration meeting. There will then be a \$50 renewal fee in January.

---

You must be a paid member In order to compete in the BAS monthly competitions.



# September Ribbon Winners

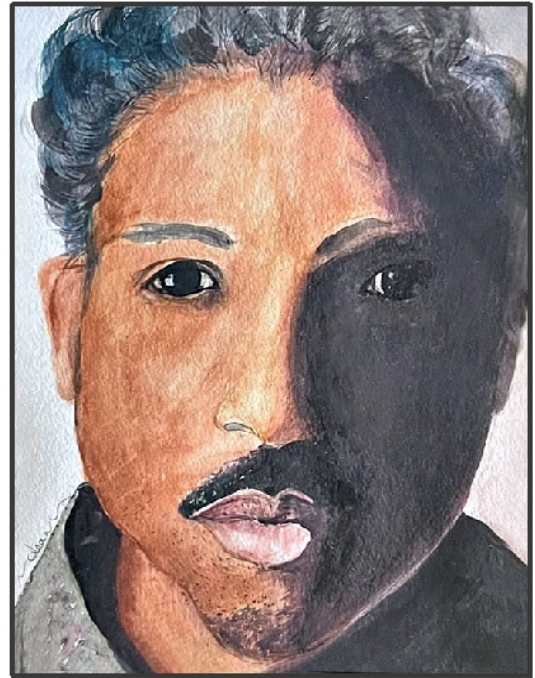


1st Place



Leona Moriarty "Watercolor w/Salt"

2nd Place



Jean Polk "Kunte"

3rd Place & Popular Choice 

*Photos by  
Maria Sanchez*



Lisa Galaviz "Blue"

Honorable Mention

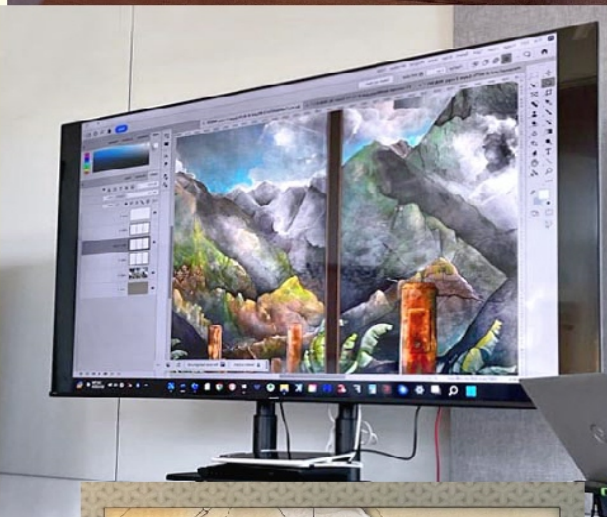


April Liu "Camelman in Sahara"



# Meeting Recap

Neil Murphy was our guest artist for September. He explained to us how he often starts his interesting pieces by using a printer to digitize and print out his work, which he then adheres to birch board, sometimes using pinned down muslin fabric to start with to give his work texture, after which he then paints on top. Neil is very interested in studying about neurons and neuron transmitters and likes to incorporate this into his art. BAS members were very interested in how he uses Photo Shop to enhance his work. He finds it a remarkable tool to help with changes in texture, color and special effects. He also brought much of his work to share with us, some of which is seen here and on his web-site...neilmurphystudio.com



Offers a 10% discount if you mention being a BAS member at the point of purchase.  
Open Mon-Sat 9.30-7 pm, Sun 11:00-5 pm



[burlingameartsociety.org](http://burlingameartsociety.org)



Burlingame Art Society  
P.O.Box 1754  
Burlingame. Ca 94010